

SMALL WALL PACK WITH GLASS LENS

WPS2

LED

CATALOG #: _____ TYPE: _____

PROJECT: _____

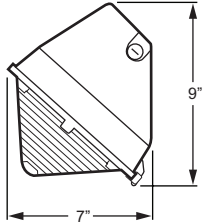
NOTES: _____

EXAMPLE → **WPS2** - **L26/850** - **OPTIONS** - **DIM** - **UNV**

SERIES LUMEN PACKAGE CRI & CCT OPTIONS DRIVER VOLTAGE



CROSS SECTION



8-1/2" x 9" x 7"

ORDERING INFORMATION

SERIES
WPS2 Small Wall Pack with Glass Lens

DRIVER
DIM 10% dimming driver prewired for 0-10V low voltage applications

LED PACKAGE

EXAMPLE: L26/850			
LUMEN PACKAGE	NOMINAL LUMENS	MINIMUM CRI & CCT	AVERAGE SYSTEM WATTAGE
L26	2600	850 = 80 CRI, 5000K	28

VOLTAGE

120	120V
208	208V
240	240V
277	277V
UNV	120-277V
347	347V
480	480V

OPTIONS

SF Single fuse (120V or 277V only; must specify voltage)

DF Double fuse (208V or 240V only; must specify voltage)

SP2 2.5kV surge protection

PC Factory-installed photocell (120V, 208V and 277V only, must specify voltage)

FEATURES

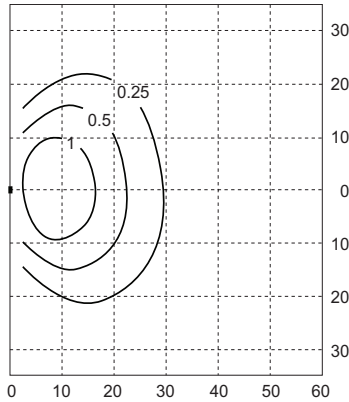
- ▶ Hinged and gasketed borosilicate glass lens.
- ▶ Designed for quick and easy installation.
- ▶ 1/2" NPS threaded hub and plugged conduit entry points.
- ▶ Fully gasketed for wet locations.
- ▶ Dark bronze finish only.

LED

FOOTCANDLE DISTRIBUTION

SPECIFICATIONS

- Housing** – Die-cast aluminum.
- Lens** – Impact-resistant prismatic borosilicate glass refractor.
- Finish** – Powder coated on heavy-duty die-cast housing. Dark bronze finish only.
- Electrical** – Electronic 120-277V or 347/480V dimmable driver. Metal core PCB LED array.
- Mounting** – Includes a die-cast mounting plate with locknut, O-ring and weatherproof gasket. Wall mounts directly over a 4" recessed outlet box or accepts 1/2" surface conduit.
- Labels** – cCSAus listed to STD22.2 No. 250.0 certified as luminaire suitable for wet locations. 40°C maximum ambient operating temperature.
- Warranty** – 5-year limited warranty.



FIXTURE: **WPS2-L26/850**

Footcandle calculations based on standard building reflectance of .10 with a ground reflectance of .0 and a light loss factor of .90.

Fixture installed at 12' mounting height.

- ▶ **Efficacy: 94 lm/W**
- ▶ **Flux: 2658 lm**
- ▶ **CRI: 83**
- ▶ **CCT: 5182**
- ▶ **BUG Ratings: B0-U4-G3**