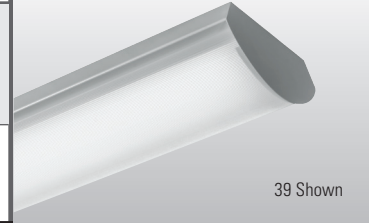


# SURFACE OR PENDANT MOUNT WRAP

# 39

## LED

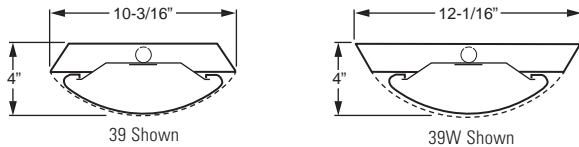
CATALOG #:	TYPE:
PROJECT:	NOTES:



**EXAMPLE** 39 - 4 - L52/835 - A - OPTIONS - DIM - UNV

SERIES NOMINAL LENGTH LUMEN PACKAGE CRI & CCT SHIELDING OPTIONS/ACCESSORIES DRIVER VOLTAGE

### CROSS SECTIONS



### ORDERING INFORMATION

SERIES	
39	Surface or Pendant Mount Wrap
39W	Wide Surface or Pendant Mount Wrap

NOMINAL LENGTH	
4	4'
8	8'

### LED PACKAGE

EXAMPLE: L52/835			AVERAGE SYSTEM WATTAGE
LUMEN PACKAGE	NOMINAL LUMENS	MINIMUM CRI & CCT	
4'			
L30	3,000	827 = 82 CRI, 2700K 830 = 82 CRI, 3000K 835 = 82 CRI, 3500K	25
L52	5,200		51
L84	8,400		84
8'			
L60	6,000	840 = 82 CRI, 4000K 850 = 82 CRI, 5000K	61
L104	10,400		105
L168	16,800		168

Nominal lumens based on 3500K CCT, actual lumens may vary.

### SHIELDING

A	Frosted ribbed acrylic
---	------------------------

### OPTIONS

EM/10WLP	Low-profile 10-watt emergency LED battery (120V-277V only)
(L__)	Additional lower lumen packages available. Specify in increments of 100 nominal lumens. Option must be specified with next higher lumen package. <b>Example:</b> 8,000 nominal lumens = 39-4-L84/835-(L80)
C2_	Two circuit quick-connect wiring harness (See Information section for complete quick-connect offering. Units ordered with quick-connect contain one endplate for continuous row mounting)

### ACCESSORIES (shipped separately)

See back and [Technical Info](#) for mounting accessories details.

SS-12	Single stem and canopy, 12"
SWS-12	Swivel stem and canopy, 12"
ACF(Y12)24	24" adjustable Y aircraft cable with canopies
ACF(Y12)48	48" adjustable Y aircraft cable with canopies
ACF(Y12)96	96" adjustable Y aircraft cable with canopies
MSA	Myers sway adapter

### DRIVER

Additional dimming drivers available, [see Technical Info](#).

DRV	Driver prewired for non-dimming applications
DIM	10% dimming driver prewired for 0-10V low voltage applications

### VOLTAGE

120	120V
277	277V
UNV	120-277V
347	347V (not available with EM drivers)

### FEATURES

- ▶ Designed for surface or suspended applications.
- ▶ Diffuser is secured continuously along luminaire sides.
- ▶ Individual or continuous row mounting.
- ▶ Endplate knock-out for thru feed wiring standard.
- ▶ This fixture is proudly made in the USA.



### SPECIFICATIONS

- Housing** – 22-gauge die-formed C.R.S. and riveted construction.
- Shielding** – Frosted ribbed acrylic.
- Finish** – 92% minimum average reflective white polyester powder coat bonded to phosphate-free, multi-stage pretreated metal. All parts painted after fabrication to facilitate installation, increase efficiency, and inhibit corrosion.
- Electrical** – High quality mid-power LED boards. Rated for 50,000 hours at 85% lumen maintenance (L85).
- Mounting** – Surface or suspended.
- Listings** –
- cCSAus certified as luminaire suitable for dry or damp locations.
  - DesignLights Consortium qualified product. Not all versions of this product may be DLC qualified, see the DLC Qualified Products List at [www.designlights.org/QPL](http://www.designlights.org/QPL)

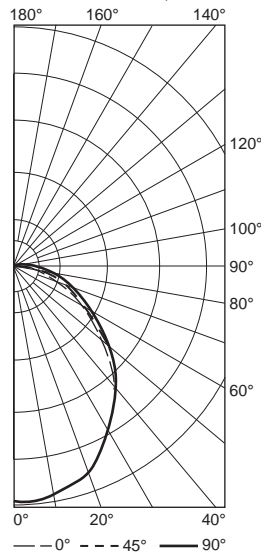
**Warranty** – 5-year limited fixture warranty, see [hew.com/warranty](http://hew.com/warranty).

### IMPORTANT:

Electrostatic sensitive unit. Observe precautions when handling.

### PHOTOMETRY

**39W-4-L52/835-A-DIM-UNV** Report #: 19087.0; 07/28/15 | Total Luminaire Output: 5198 lumens; 51.1 Watts  
 Efficacy: 101.7 lm/W | 84.3 CRI; 3531K CCT

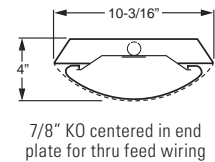
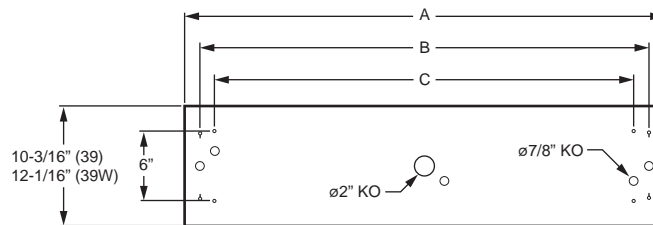


Vertical Angle	Horizontal Angle			Zonal Lumens
	0°	45°	90°	
0	1981.	1981.	1981.	
5	1992.	1990.	1991.	190.0
15	1879.	1884.	1888.	533.9
25	1669.	1678.	1681.	776.3
35	1435.	1454.	1462.	911.5
45	1119.	1153.	1172.	890.2
55	771.	821.	857.	733.1
65	484.	548.	615.	545.9
75	230.	323.	403.	338.4
85	59.	168.	245.	175.3
90	0.	100.	164.	
95	0.	64.	121.	67.3
105	0.	25.	57.	26.6
115	0.	0.	29.	9.5
125	0.	0.	0.	0.
135	0.	0.	0.	0.
145	0.	0.	0.	0.
155	0.	0.	0.	0.
165	0.	0.	0.	0.
175	0.	0.	0.	0.
185	0.	0.	0.	0.

LUMEN SUMMARY	Zone	Lumens	% Fixture
	0 - 30	1500.	28.9
	0 - 40	2412.	46.4
	0 - 60	4035.	77.6
	0 - 90	5095.	98.0
	90 - 120	103.	2.0
	90 - 150	103.	2.0
	90 - 180	103.	2.0
	0 - 180	5198.	100.0

### FIXTURE DETAILS

#### BACK VIEW



Nominal Length	A (Overall)	B (Stem/Cable O.C.)	C (Surface Mounting Holes)
3'	36-1/16"	31"	28"
4'	48-1/16"	43"	40"
8'	96-1/16"	91"	88"

#### MOUNTING OPTIONS

