

# WALL PACK – MINI

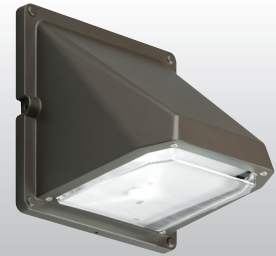
# WPM

## LED

CATALOG #:	TYPE:
PROJECT:	NOTES:

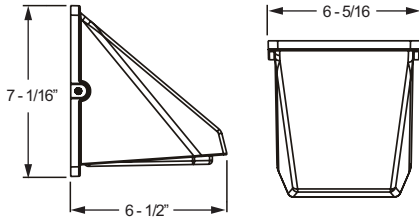
**EXAMPLE** → **WPM** - **L8/750** - **OPTIONS** - **DRV** - **UNV**

SERIES      LUMEN PACKAGE      CRI & CCT      OPTIONS/ACCESSORIES      DRIVER      VOLTAGE



### CROSS SECTIONS

This fixture does not comply with Buy American/ARRA and similar regulatory programs.



### ORDERING INFORMATION

**SERIES**  
**WPM** Wall Pack – Mini

**OPTIONS**  
**PC** Factory-installed photocell (120V only)

**LED PACKAGE**

EXAMPLE: L8/750			AVERAGE SYSTEM WATTAGE
LUMEN PACKAGE	NOMINAL LUMENS	MINIMUM CRI & CCT	
L3	300	750 = 70 CRI, 5000K	4
L8	800		11

**ACCESSORIES**  
**TP20 TORX** #20, tamper-resistant tool. (Tamper resistant tool must be ordered separately. Please specify quantity required per project.)  
**EM/10W/BBU** 10-watt emergency battery, with housing extension, field installed. Shipped separately. See back for details.

**DRIVER**  
**DRV** Driver prewired for non-dimming applications

**VOLTAGE**  
**120** 120V  
**277** 277V  
**UNV** 120-277V

### FEATURES

- ▶ Energy-saving alternative to traditional incandescent or CFL fixtures.
- ▶ Provides effective security lighting.
- ▶ Typical mounting heights up to 10'.
- ▶ Integral heat sink for passive thermal management.
- ▶ Rated >50,000 hours at 70% lumen maintenance (L70).
- ▶ IP65 rated
- ▶ Tamper-resistant #20 screws, standard.
- ▶ Optional emergency driver provides 90 minutes of emergency illumination.
- ▶ Quick mount bracket for ease of installation.
- ▶ Dark bronze finish only.
- ▶ Wet location listed.
- ▶ High-impact polycarbonate diffuser.
- ▶ Die-cast aluminum housing.

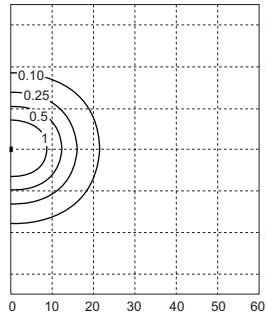


## LED

### SPECIFICATIONS

- Housing** – Die-cast aluminum.
- Lens** – High-impact polycarbonate
- Finish** – Powder coated finish on heavy-duty die-cast housing. Bronze finish only.
- Electrical** – Electronic 120-277V dimmable driver. C.O.B LED array. L70 >50,000 hours.
- Mounting** – Wall mounts directly over a 4" maximum recessed outlet box.
- Labels** – UL/CUL listed as luminaire suitable for wet locations. 40°C maximum ambient operating temperature.
- Warranty** – 5-year limited warranty.

### FOOTCANDLE DISTRIBUTION



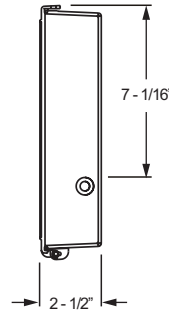
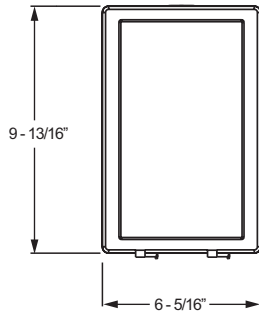
FIXTURE: **WPM-L8/750-DIM-UNV**  
 Footcandle calculations based on standard building reflectance of 0.30 with a ground reflectance of 0.01 and a light loss factor of 0.90.

Fixture installed at 10' mounting height.

- ▶ **Efficacy: 73 lm/W**
- ▶ **Flux: 828 lm**
- ▶ **CRI: 70**
- ▶ **CCT: 5204**

### FIXTURE DETAILS

#### EM DRIVER WITH BACK BOX



### MOUNTING

#### BOLT CIRCLE PATTERN DETAIL

