

7.5" LED CYLINDER

LC7

PoE

CATALOG #: _____ TYPE: _____

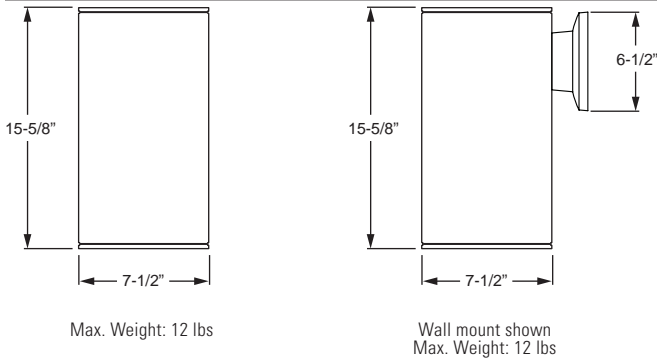
PROJECT: _____ NOTES: _____

EXAMPLE → **LC7 - P45C/835 - WHT - CS/M - OPTIONS - QM - POE N**

SERIES LUMEN PACKAGE CRI & CCT HOUSING FINISH REFLECT. COLOR DIST. OPTIONS MOUNTING DRIVER



CROSS SECTION



ORDERING INFORMATION

SERIES
LC7 7.5" LED Cylinder – PoE

LED PACKAGE
Nominal lumens based on CS reflector color and W distribution.
See page 2 for fixture performance data.

EXAMPLE: P45C/835				WATTAGE
LUMEN PACKAGE	NOMINAL LUMENS	MINIMUM		
		CRI	CCT	
P14C	1,400	8 = 80 9 = 90	27=2700K	17
P20C	2,000		30=3000K	25
P45C	4,500		35=3500K 40=4000K	50

HOUSING FINISH
For custom color options, visit the LC7 at hew.com.¹

ALUM Satin silver aluminum
BLK Textured black
BRZ Textured bronze
NKL Textured nickel
SLV Textured silver
WHT Textured white

REFLECTOR COLOR

CS Clear semi-specular (standard)
CG Champagne gold
GD Gold
PW Pewter
SG Satin-glow
SPC Clear specular
STR Straw
WT Wheat
WH Painted white reflector, textured

DISTRIBUTION ²

W 75° Wide
M 50° Medium

OPTIONS
See back for cord options and mounting details.
LAD Acrylic luminous disk
LADO Acrylic luminous disk open
LAR Acrylic luminous ring

ACCESSORIES
See hew.com/poe for compatible sensors & switches

MOUNTING
See back for cord options and mounting details.
QM Quick installation canopy surface mount
PM____ Pendant mount (specify length in 1" increments, minimum 4"), see back. Canopy and pendant match fixture housing color unless specified otherwise. (Requires remote mount node, see page 3 for details)
Example: 24" pendant = **PM24**
SM Surface mount to octagonal J-box
CM____ Adjustable aircraft cable mount, 24" length standard (48" and 96" lengths available). Canopy painted white unless specified otherwise. Must specify network cable, see page 3.
Example: 24" cable = **CM24**
WM Wall mount

CONTROL
For additional PoE info, see hew.com/poe
PM mounting requires remote mount node, see page 3 for details.
POE N Power over Ethernet network node
POE D Power over Ethernet device node (not available for fixtures over 40W)

FEATURES

- ▶ Williams turn-key Power over Ethernet (PoE) solution provides plug-and-play networked lighting and control.
- ▶ Self-flanged aluminum reflector prevents light leaks and is available in assorted colors.
- ▶ Standard cylinder colors are bronze, black, white, or silver aluminum (must specify when ordering).
- ▶ Custom colors available.
- ▶ All-aluminum cylinder components dissipate heat for cooler operation.
- ▶ This fixture is proudly made in the USA.

SYSTEM REQUIREMENTS

- Lighting system (site software)
- Gateway or alternate server (runs software)
- PoE switches or Ethernet switches and mid-span power injectors
- See hew.com/poe for details

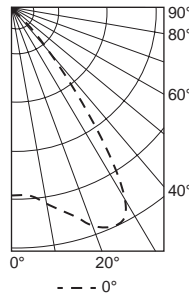
¹ For custom colors other than RAL, manufacturers' code plus two swatches (minimum 1" square) required.

² Beam angle/distribution does not account for options/accessories such as accent cone with lens, acrylic accent rings, or alternate reflector finishes. Actual beam angle/distribution may vary. Consult factory with complete model number for approximate values.



PHOTOMETRY

LC7-P45C/835-CS/W Total Luminaire Output: 4461 lumens; 50 Watts
 Efficacy: 89 lm/W | 82.1 CRI; 3558K CCT | IES Spacing Criteria: 0-180 = 1.33; 90-270 = 1.33



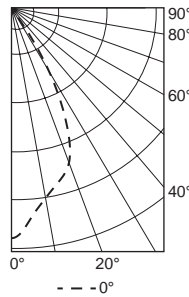
CANDLEPOWER DISTRIBUTION	Vertical Angle	Horizontal Angle	Zonal Lumens
		0°	
	0	2879	
	5	2906	282
	15	3215	925
	25	3603	1620
	35	1903	1192
	45	411	341
	55	54	62
	65	22	21
	75	9	10
	85	7	8
	90	10	

LUMEN SUMMARY	Zone	Lumens	% Fixture
	0 - 40	4019	90
	0 - 60	4421	99
	0 - 90	4461	100
	0 - 180	4461	100

SPECIFICATIONS

- Housing** – Extruded aluminum.
- Finish** – Polyester powder coat bonded to phosphate-free, multi-stage pretreated metal. All parts painted after fabrication to facilitate installation, increase efficiency, and inhibit corrosion.
- Electrical** – High quality mid-power LED C.O.B. L70 >50,000 hours. Low-voltage DC fixture, to be fed by Class 2 power supply.
- Mounting** – Surface, cable, pendant or wall. Indoor applications only.
- Labels** – cCSAus certified as luminaire suitable for dry or damp locations.
- Warranty** – 5-year limited warranty, see hew.com/warranty.

LC7-P45C/835-CS/M Total Luminaire Output: 4217 lumens; 50 Watts
 Efficacy: 84 lm/W | 82.2 CRI; 3562K CCT | IES Spacing Criteria: 0-180 = 0.84; 90-270 = 0.84



CANDLEPOWER DISTRIBUTION	Vertical Angle	Horizontal Angle	Zonal Lumens
		0°	
	0	6352	
	5	5846	541
	15	4949	1391
	25	3549	1585
	35	821	597
	45	103	88
	55	8	10
	65	4	3
	75	0	1
	85	2	2
	90	1	

LUMEN SUMMARY	Zone	Lumens	% Fixture
	0 - 40	4114	98
	0 - 60	4211	99
	0 - 90	4217	100
	0 - 180	4217	100

FIXTURE PERFORMANCE DATA

LED PACKAGE	DISTRIBUTION	WATTAGE	DELIVERED LUMENS	EFFICACY (lm/W)
P14C	W	17	1437	86
	M		1358	82
P20C	W	25	2019	81
	M		1909	76
P45C	W	50	4461	89
	M		4217	84

- Photometrics tested in accordance with IESNA LM-79. Results shown are based on 25°C ambient temperature.
- Results scaled based on relative CCT output.
- Use multiplier tables to calculate additional options.

COLOR TEMPERATURE MULTIPLIER		
	CCT	CONVERSION FACTOR
80 CRI	2700K	0.95
	3000K	0.96
	3500K	1.00
	4000K	1.01
90 CRI	2700K	0.74
	3000K	0.85
	3500K	0.90
	4000K	0.91

REFLECTOR FINISH MULTIPLIER		
CATALOG NUMBER	REFLECTOR FINISH	CONVERSION FACTOR
CS	Clear semi-specular	1.00
SPC	Clear specular	1.02
CG	Champagne Gold	0.96
GD	Gold	0.93
PW	Pewter	0.86
SG	Satin-glow	0.83
STR	Straw	0.97
WH	White, textured	0.90
WT	Wheat	0.88



MOUNTING DETAILS

CABLE MOUNT (CM_)

Cable mount fixtures are provided with:

- Adjustable length aircraft cable, must specify length in inches.
- Network cable (must specify length)
- One 5" canopy.
- T-bar clip with 1/4-20 stud.
- Hard ceiling anchor provided by others.
- See [instruction sheet](#) for more information.



PENDANT MOUNT (PM_)

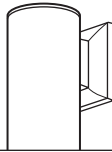
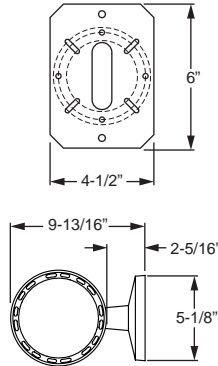
Swivel pendant mount fixtures are provided with:

- Swivel canopy with 3/8" I.P.S. threaded stem (specify length of stem, 4" minimum, 24" default length)
- T-bar clip with 1/4-20 stud.
- Hard ceiling anchor provided by others.
- Remote node box
- See [instruction sheet](#) for more information.



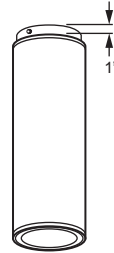
WALL MOUNT (WM)

Mounts to 4" maximum J-box. Includes wall mounting plate and cast cover.



QUICK SURFACE MOUNT (QM)

Quick installation canopy surface mount to octagonal J-box



SURFACE MOUNT (SM)

Surface mount to octagonal J-box



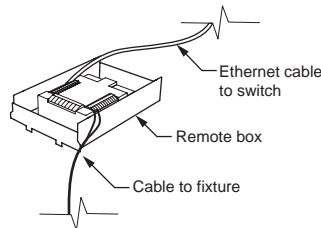
FIXTURE DETAILS

NETWORK CABLE OPTIONS

Must specify cord when cable mounting.

EXAMPLE: P24/W		
CORD TYPE	LENGTH	COLOR
P = PoE	24 = 24" 48 = 48" 96 = 96"	/B = Black /W = White

REMOTE MOUNT NODE DETAILS



Includes 2' plenum rated 18ga. solid cable. Remote box can be installed in:

- Above ceiling grid
- Remote closet (within 100ft)
- Surface below ceiling

See [Technical Info](#) for dimension details.

