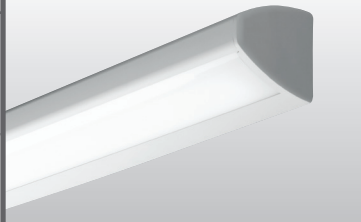


ARCHITECTURAL WALL MOUNT

WMA

tunable **WHITE** | PoE



- ### FEATURES
- ▶ Williams turn-key Power over Ethernet (PoE) solution provides plug-and-play networked lighting and control.
 - ▶ Tunable white from 3000K to 5000K CCT, minimum 80 CRI.
 - ▶ Efficacies up to 119 lm/W.
 - ▶ Ambient up/down light with closed top option available.
 - ▶ Tool-less access to LEDs by removing front housing from fixture channel.
 - ▶ Various housing color options available, consult factory.
 - ▶ Optional anti-microbial white finish available for use in healthcare applications.
 - ▶ Contoured architectural housing with die-cast aluminum end caps.
 - ▶ Keyhole mounting for easy installation.
 - ▶ Optional tamper-resistant screws available.
 - ▶ This fixture is proudly made in the USA.

- ### SYSTEM REQUIREMENTS
- Lighting system (site software)
 - Gateway or alternate server (runs software)
 - PoE switches or Ethernet switches and mid-span power injectors
 - See hew.com/poe for details

ACCESSORIES

See hew.com/poe for compatible sensors & switches

CONTROL

For additional PoE info, see hew.com/poe

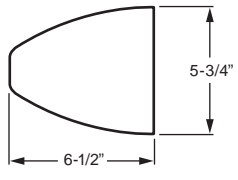
POE N Power over Ethernet network node
POE D Power over Ethernet device node (not available for fixtures over 40W)

CATALOG #:	TYPE:
PROJECT:	NOTES:

EXAMPLE **WMA - 4 - P56/835 - AF - OPTIONS - POEN**

SERIES NOMINAL LENGTH LUMEN PACKAGE CRI & CCT SHIELDING OPTIONS/ACCESSORIES CONTROL

CROSS SECTION



ORDERING INFORMATION

SERIES
WMA Architectural Wall Mount – PoE

SHIELDING
AF Frosted acrylic, .125" thick

NOMINAL LENGTH

2	2'
3	3'
4	4'

OPTIONS
 For color options, visit the WMA online at hew.com.

LED PACKAGE

EXAMPLE: P56/835			
	LUMEN PACKAGE	NOMINAL LUMENS	WATTAGE
STANDARD UP/DOWN			
2'	P24	2,400	25
	P17	1,700	15
3'	P25	2,500	23
	P27	2,700	24
4'	P56	5,600	47
	CLOSED-TOP OPTION		
2'	P16	1,600	16
3'	P17	1,700	16
	P25	2,500	25
4'	P25	2,500	24

EM/CP12 Remote mount 12-watt Iota emergency LED battery (requires one additional category cable run to switch, see page 3 for details.)

BC Fixture prewired for bedside controls, button functionality determined with gateway software.

PSBR Bottom-mounted pull switch on right, functionality determined with gateway software.

PSBL Bottom-mounted pull switch on left, functionality determined with gateway software.

CT Closed-top (affects maximum lumen output and distribution, see LED package)

TP Tamper-resistant (holt head) screws. This option requires a tamper-resistant tool (must be ordered separately). Please specify quantity required per project.

AMW Anti-microbial white finish

Nominal lumen output based on 3500K for single CCT and 4000K for TW. Actual lumens may vary +/-5%, see fixture performance data.

CRI & CCT

827	82 CRI, 2700K
830	82 CRI, 3000K
835	82 CRI, 3500K
840	82 CRI, 4000K
850	82 CRI, 5000K
8TW	Tunable white (80 CRI, 3000K–5000K)

SPECIFICATIONS

Housing – 20-gauge C.R.S. fixture channel. Front housing constructed of marine grade extruded aluminum with die-cast aluminum end caps.

Reflective Surfaces – 92% minimum average reflective white polyester powder coat on interior steel components.

Shielding – Frosted acrylic, .125" thick.

Finish – Textured matte white polyester TGIC powder coat bonded to phosphate-free, multi-stage pretreated metal. All parts painted after fabrication to facilitate installation, increase efficiency, and inhibit corrosion.

Electrical – High quality mid-power LED board. L70 > 50,000 hours per IES TM-21. Low-voltage DC fixture, to be fed by Class 2 power supply. Tunable White products use LEDs of multiple CCTs and may produce a perceptibly different shade of white from single-CCT products at the same CCT. All CCTs are within 3 MacAdam ellipses.

Mounting – Wall.

Labels – cCSAus certified as luminaire suitable for dry or damp locations.

Warranty – 5-year limited warranty, see hew.com/warranty.

IMPORTANT:

Electrostatic sensitive unit. Observe precautions when handling.

FIXTURE PERFORMANCE DATA

STANDARD UP/DOWN

LED PACKAGE	DELIVERED LUMENS	WATTAGE	EFFICACY (lm/W)
2'			
P24	2411	25.0	96.4
3'			
P17	1741	15.1	115.5
P25	2525	23.0	109.9
4'			
P27	2734	24.0	113.9
P56	5630	47.1	119.5

STANDARD CLOSED-TOP

LED PACKAGE	DELIVERED LUMENS	WATTAGE	EFFICACY (lm/W)
2'			
P16	1624	16.0	101.5
3'			
P17	1706	16.0	106.6
P25	2537	25.0	101.5
4'			
P25	2503	24.0	104.3

TUNABLE WHITE UP/DOWN

LED PACKAGE	DELIVERED LUMENS	WATTAGE	EFFICACY (lm/W)
2'			
P24	2403	25.1	95.8
3'			
P17	1711	16.7	102.5
P25	2534	25.4	99.6
4'			
P27	2715	25.1	108.2
P56	5626	50.8	110.7

TUNABLE WHITE CLOSED-TOP

LED PACKAGE	DELIVERED LUMENS	WATTAGE	EFFICACY (lm/W)
2'			
P16	1617	17.3	93.6
3'			
P17	1710	16.9	101.2
P25	2508	25.3	98.6
4'			
P25	2534	24.6	102.9

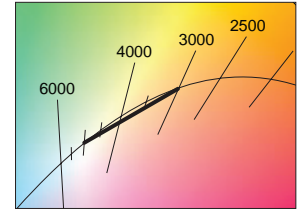
MULTIPLIER TABLES

STANDARD

CCT	CONVERSION FACTOR
2700K	0.97
3000K	0.99
3500K	1.00
4000K	1.03
5000K	1.06

TUNABLE WHITE

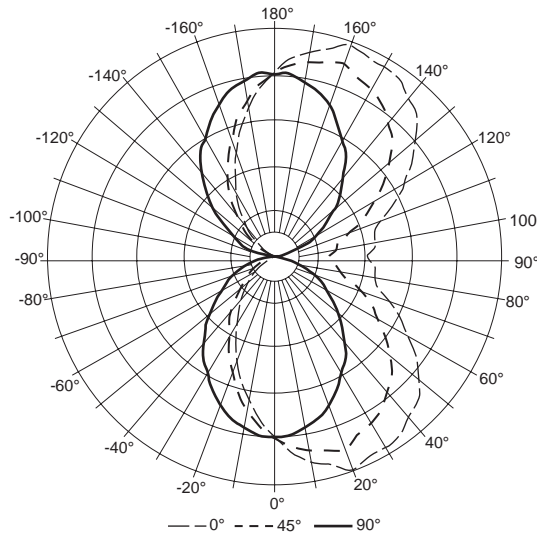
CCT	CONVERSION FACTOR
3000K	0.95
3500K	0.98
4000K	1.00
5000K	0.96



- Photometrics tested in accordance with IESNA LM-79. Results shown are based on 25°C ambient temperature.
- Standard results based on 3500K standard, 80 CRI, actual lumens may vary +/-5%
- Tunable white results based on 4000K standard, 80 CRI, actual lumens may vary +/-5%
- Use multiplier table to calculate additional options.

PHOTOMETRY

WMA-4-P56/835-AF Total Luminaire Output: 5630 lumens; 47.1 Watts; Efficacy: 120 lm/W

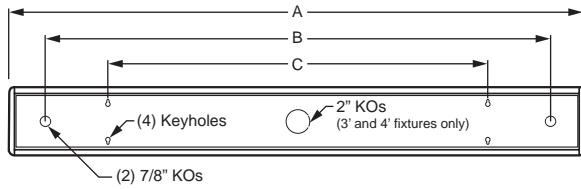


Vertical Angle	Horizontal Angle					Zonal Lumens
	0°	45°	90°	135°	180°	
0	1008	1008	1008	1008	1008	1008
5	1101	1066	1002	955	925	95
15	1197	1115	936	789	725	268
25	1234	1101	823	603	517	393
35	1219	1046	697	441	350	460
45	1136	931	536	277	197	463
55	955	752	383	152	87	406
65	770	583	251	58	16	318
75	589	391	125	4	8	225
85	567	341	29	15	29	185
90	517	312	0	27	40	
95	563	343	30	21	34	186
105	585	396	127	4	8	225
115	765	587	252	56	14	318
125	947	757	390	155	87	406
135	1121	931	540	277	197	463
145	1209	1046	709	443	353	461
155	1224	1099	833	605	520	393
165	1193	1116	950	791	728	269
175	1099	1068	1019	961	931	96
180	1011	1011	1011	1011	1011	

Zone	Lumens	% Fixture
0 - 30	756	13
0 - 40	1216	22
0 - 60	2085	37
0 - 90	2813	50
90 - 120	729	13
90 - 150	2060	37
90 - 180	2817	50
0 - 180	5630	100

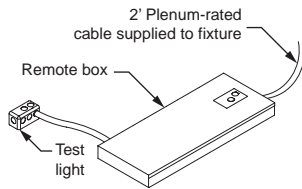
FIXTURE DETAILS

BACK VIEW



NOMINAL LENGTH	DIMENSIONS		
	A	B	C
2'	25-1/8" O.C.	20-1/2" O.C.	16" O.C.
3'	37-1/8" O.C.	32-1/2" O.C.	32" O.C.
4'	49-1/8" O.C.	42-1/2" O.C.	32" O.C.

REMOTE MOUNT EM OPTION DETAILS



Includes 2' plenum rated 18ga. solid cable. Remote box can be installed in:

- Above ceiling grid
- Remote closet (within 100ft)
- Surface below ceiling

See [Technical Info](#) for dimension details.

