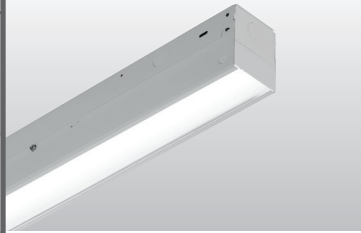


# LENSED LED STRIP

# 75L

tunable **WHITE** | PoE



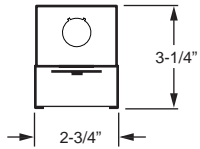
CATALOG #: \_\_\_\_\_ TYPE: \_\_\_\_\_

PROJECT: \_\_\_\_\_ NOTES: \_\_\_\_\_

**EXAMPLE** → **75L** - **4** - **P60/835** - **A12125** - **OPTIONS** - **POEN**

SERIES    NOMINAL LENGTH    LUMEN PACKAGE    CRI & CCT    SHIELDING    OPTIONS/ACCESSORIES    CONTROL

## CROSS SECTION



## ORDERING INFORMATION

**SERIES**  
**75L** Lensed Strip – PoE

**NOMINAL LENGTH**

<b>2</b>	2' (Actual length 22-1/2")
<b>4</b>	4' (Actual length 44-5/8")
<b>8</b>	8' (Actual length 89-1/4")

**LED PACKAGE**

Example: P60/835		WATTAGE
LUMEN PACKAGE	NOMINAL LUMENS	
2'		
P20	2,000	16
P28	2,800	24
4'		
P20	2,000	16
P29	2,900	25
P60	6,000	50
8'		
P31	3,100	25
P60	6,000	49
P120	12,000	100

Nominal lumen output based on 3500K for single CCT and 4000K for TW. Actual lumens may vary +/-5%, see fixture performance data.

**CRI & CCT**

<b>827</b>	82 CRI, 2700K
<b>830</b>	82 CRI, 3000K
<b>835</b>	82 CRI, 3500K
<b>840</b>	82 CRI, 4000K
<b>850</b>	82 CRI, 5000K
<b>8TW</b>	Tunable white (80 CRI, 3000K–5000K)

**SHIELDING**  
**A12125** Acrylic, pattern #12, .125" thick  
**DMA** Diffused matte acrylic, .080" thick

**OPTIONS**  
 Suspended fixtures require power supply cable, see page 4.  
**EM/CP12** Remote mount 12-watt Iota emergency LED battery (requires one additional category cable run to switch, see page 3 for details.)

**ACCESSORIES**  
 See [hew.com/poe](http://hew.com/poe) for compatible sensors & switches  
 Aircraft cable accessories available, see page 4.  
 See page 3 for accessories details.  
**WG-75** 11-gauge white powder coat wireguard  
**315** 1-1/2" ceiling spacer  
**VBV** (2) Y-hangers  
**VBV-2** (2) Y-hangers and (2) 2' chains  
**RA-75** Row aligner (required when mounting with aircraft cables)

**CONTROL**  
 For additional PoE info, see [hew.com/poe](http://hew.com/poe)  
 Node requires remote mounting, see page 3 for details.  
**POE N** Power over Ethernet network node  
**POE D** Power over Ethernet device node (not available for fixtures over 40W)

## FEATURES

- ▶ Williams turn-key Power over Ethernet (PoE) solution provides plug-and-play networked lighting and control.
- ▶ Tunable white from 3000K to 5000K CCT, minimum 80 CRI.
- ▶ Efficacies up to 133 lm/W.
- ▶ Small fixture profile allows inconspicuous placement in coves or confined spaces.
- ▶ Frosted or prismatic lens protects LEDs and improves appearance.
- ▶ Row applications produce continuous light with minimal interruption between fixtures.
- ▶ Power and light levels can be custom set to meet energy and design needs in applications ranging from coves to high-ceiling common areas.
- ▶ This fixture is proudly made in the USA.

## SYSTEM REQUIREMENTS

- Lighting system (site software)
- Gateway or alternate server (runs software)
- PoE switches or Ethernet switches and mid-span power injectors
- See [hew.com/poe](http://hew.com/poe) for details



### SPECIFICATIONS

**Housing** – 22-gauge die-formed C.R.S.  
**Finish** – 92% minimum average reflective white polyester powder coat bonded to phosphate-free, multi-stage pretreated metal. All parts painted after fabrication to facilitate installation, increase efficiency, and inhibit corrosion.

**Shielding** – Acrylic, pattern #12, .125" thick.  
**Electrical** – High quality mid-power LED board. L70 > 50,000 hours per IES TM-21. Low-voltage DC fixture, to be fed by Class 2 power supply. Tunable White products use LEDs of multiple CCTs and may produce a perceptibly different shade of white from single-CCT products at the same CCT. All CCTs are within 3 MacAdam ellipses.

**Mounting** – Surface or suspended.  
**Labels** – cCSAus certified as luminaire suitable for dry or damp locations.  
**Warranty** – 5-year limited warranty, see [hew.com/warranty](http://hew.com/warranty).

### IMPORTANT:

Electrostatic sensitive unit. Observe precautions when handling.

### FIXTURE PERFORMANCE DATA

#### STANDARD

LED PACKAGE	DELIVERED LUMENS	WATTAGE	EFFICACY (lm/W)
2'			
P20	2007	16.0	125.4
P28	2845	24.0	118.5
4'			
P20	2031	16.0	126.9
P29	2900	25.0	116.0
P60	6041	50.0	120.8
8'			
P31	3122	25.0	124.9
P60	6022	49.0	122.9
P120 <sup>1</sup>	12081	100.0	120.8

<sup>1</sup> Fixture contains two nodes, one power drop per node required.

#### TUNABLE WHITE

LED PACKAGE	DELIVERED LUMENS	WATTAGE	EFFICACY (lm/W)
2'			
P20	2038	18.2	111.7
P28	2825	26.6	106.3
4'			
P20	2001	16.7	119.5
P29	2939	25.6	115.0
P60	6022	50.0	120.4
8'			
P31	3148	26.0	121.3
P60	6024	50.2	120.1
P120 <sup>1</sup>	12044	100.0	120.4

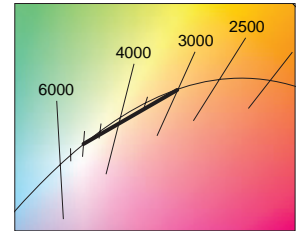
### MULTIPLIER TABLES

#### STANDARD

CCT	CONVERSION FACTOR
2700K	0.97
3000K	0.99
3500K	1.00
4000K	1.03
5000K	1.06

#### TUNABLE WHITE

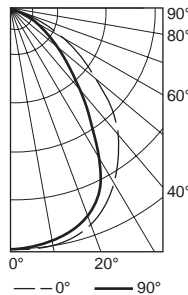
CCT	CONVERSION FACTOR
3000K	0.95
3500K	0.98
4000K	1.00
5000K	0.96



- Photometrics tested in accordance with IESNA LM-79. Results shown are based on 25°C ambient temperature.
- Standard results based on 3500K standard, 80 CRI, actual lumens may vary +/-5%
- Tunable white results based on 4000K standard, 80 CRI, actual lumens may vary +/-5%
- Use multiplier table to calculate additional options.

### PHOTOMETRY

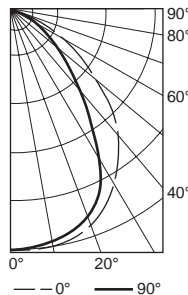
**75L-4-P60/835-A12125** Total Luminaire Output: 6041 lumens; 50.0 Watts  
 Efficacy: 121 lm/W | 82.3 CRI; 3500K CCT | IES Spacing Criteria: End: 1.3, Across: 1.1



CANDLEPOWER DISTRIBUTION	VERTICAL ANGLE	HORIZONTAL ANGLE			ZONAL LUMENS
		0°	45°	90°	
0	2904	2904	2904	2904	
5	2945	2887	2883	275	
15	2860	2813	2788	793	
25	2648	2600	2512	1182	
35	2274	2072	1722	1264	
45	1738	1296	1005	1045	
55	1131	756	614	726	
65	576	366	378	429	
75	290	188	236	241	
85	85	64	76	86	
90	0	0	0	0	

LUMEN SUMMARY	ZONE	LUMENS	% FIXTURE
0 - 30		2251	37
0 - 40		3515	58
0 - 60		5285	88
0 - 90		6041	100
0 - 180		6041	100

**75L-4-P60/835-DMA** Total Luminaire Output: 6041 lumens; 50 Watts  
 Efficacy: 121 lm/W | 82.3 CRI; 3500K CCT | IES Spacing Criteria: End: 1.3, Across: 1.1

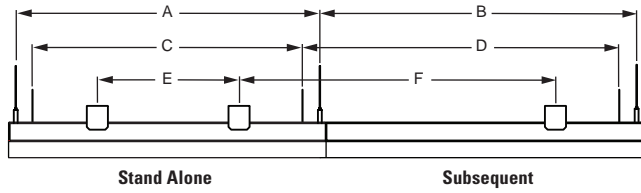


CANDLEPOWER DISTRIBUTION	VERTICAL ANGLE	HORIZONTAL ANGLE			ZONAL LUMENS
		0°	45°	90°	
0	2651	2651	2651	2651	
5	2700	2639	2587	250	
15	2585	2506	2432	704	
25	2348	2238	2118	1026	
35	1995	1870	1671	1157	
45	1597	1421	1174	1084	
55	1123	966	789	866	
65	700	591	458	585	
75	342	275	207	296	
85	82	61	43	73	
90	0	0	0	0	

LUMEN SUMMARY	ZONE	LUMENS	% FIXTURE
0 - 30		1981	33
0 - 40		3137	52
0 - 60		5087	84
0 - 90		6041	100
0 - 180		6041	100

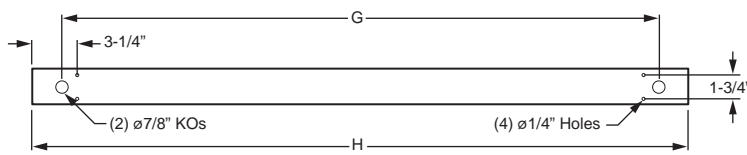
**FIXTURE DETAILS**

**MOUNTING INFORMATION**



	MOUNTING LENGTH					
	AIRCRAFT CABLE		VBY HANGER		315 SPACER	
	A	B	C	D	E	F
2'	21-1/2"	22-1/2"	19"	22-1/2"	10"	22-1/2"
4'	43-5/8"	44-5/8"	41-1/4"	44-5/8"	32"	44-5/8"
8'	88-3/16"	89-1/4"	85"	89-1/4"	77"	89-1/4"

**BACK VIEW**



	7/8" KOs (G)	ACTUAL FIXTURE LENGTH (H)
2'	18-3/8"	22-1/2"
4'	40-1/2"	44-5/8"
8'	85-1/8"	89-1/4"

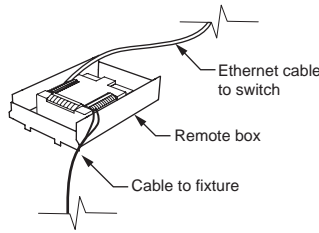
**REMOTE MOUNT DETAILS**

Includes 2' plenum-rated 18ga. solid cable.  
Remote box can be installed in:

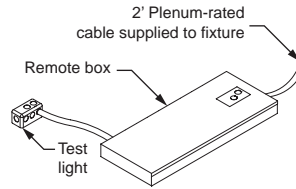
- Above ceiling grid
- Remote closet (within 100ft)
- Surface below ceiling

See [Technical Info](#) for dimension details.

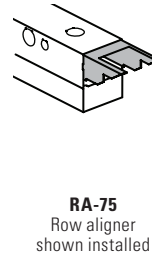
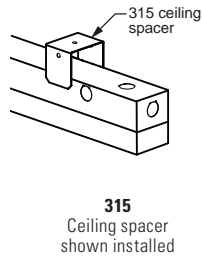
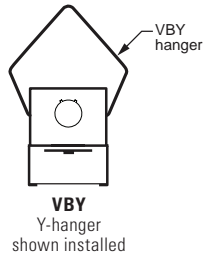
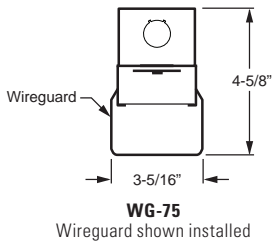
**NODE**



**NODE AND EM OPTION**

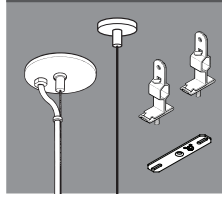


**ACCESSORIES DETAILS**



### AIRCRAFT CABLES (requires RA75 row aligner)

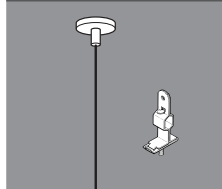
#### FEEDER FIXTURE – ø1/16" AIRCRAFT CABLE



EXAMPLE: ACF/D48		
MOUNTING	TYPE	LENGTH
ACF/ = Aircraft	D = 1' grid & hardpan	24 = 24"
	N = 9/16" grid	48 = 48"
	S = Slot grid	96 = 96"

Fixtures are provided with adjustable length aircraft cables and mounting hardware, must specify.

#### JOINER FIXTURE – ø1/16" AIRCRAFT CABLE



EXAMPLE: ACJ/D48		
MOUNTING	TYPE	LENGTH
ACJ/ = Aircraft	D = 1' grid & hardpan	24 = 24"
	N = 9/16" grid	48 = 48"
	S = Slot grid	96 = 96"

Fixtures are provided with adjustable length aircraft cables and mounting hardware, must specify.

**NOTE:** Electrical supply is brought into the feeder (or stand-alone) fixture, either as part of a row or as an individual mount unit. Joiner fixtures complete the row.

### POWER SUPPLY CABLE

Required for aircraft cable mounted fixtures. Please specify cord type using ordering example below.

EXAMPLE: P24/W		
CORD TYPE	LENGTH	COLOR
P = PoE	24 = 24"	/W = White /B = Black
	48 = 48"	
	96 = 96"	