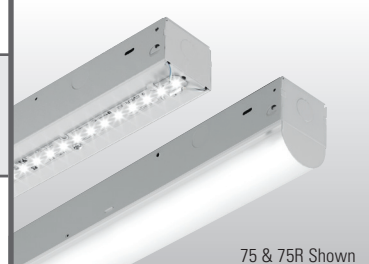


NARROW LED STRIP

75

fieldseleCCT®



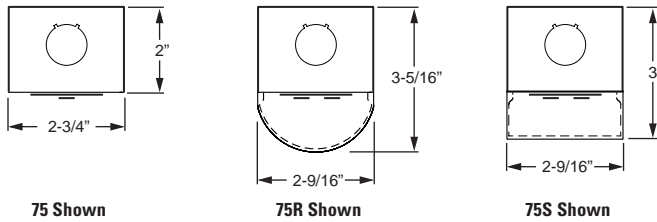
75 & 75R Shown

CATALOG #:	TYPE:
PROJECT:	NOTES:

EXAMPLE → **75** - **4** - **L60/8FS** - **OPTIONS** - **DIM** - **UNV**

SERIES NOMINAL LENGTH LUMEN PACKAGE CRI & CCT OPTIONS/ACCESSORIES DRIVER VOLTAGE

CROSS SECTION



ORDERING INFORMATION

SERIES	
75	Narrow LED Strip – fieldseleCCT®
75R	Round Lens LED Strip – fieldseleCCT®
75S	Square Lens LED Strip – fieldseleCCT®

NOMINAL LENGTH	
2	2' (Actual length 22-1/2")
4	4' (Actual length 44-5/8")
8	8' (Actual length 89-1/4")

Example: L60/8FS		
LUMEN PACKAGE	NOMINAL LUMENS	WATTAGE
2'		
L15	1,500	13
L20	1,900	18
L30	2,900	28
4'		
L27	2,700	20
L45	4,500	33
L60	6,000	47
8'		
L56	5,600	40
L90	9,000	66
L120	12,000	94

Nominal lumen output based on 3500 CCT. Actual lumens may vary +/-5%. See fixture performance data.

CRI	
8	80 CRI

CCT	
FS	fieldseleCCT 3000K, 3500K, 4000K

OPTIONS	
Suspended fixtures require cord, see page 4.	
C2_	Two circuit quick-connect wiring harness (See Technical Info for complete quick-connect offering.)
EM/10WLP	Low-profile 10-watt emergency LED battery (4' and 8' only; must specify 120V or 277V)
EM/10W REMOTE	Remote mount 10-watt emergency LED battery (2' only; must specify 120V or 277V)

ACCESSORIES (ordered separately)	
See page 4 for special reflectors , ordered separately. Aircraft cable accessories available, see page 4.	
WG-75	11-gauge white powder coat wireguard
315	1-1/2" ceiling spacer
VBY	(2) Y-hangers
VBY-2	(2) Y-hangers and (2) 2' chains
RA-75	Row aligner (required when mounting with aircraft cables)

DRIVER	
Additional dimming drivers available, see Technical Info .	
DRV	Driver prewired for non-dimming applications
DIM	10% dimming driver prewired for 0-10V low voltage applications

VOLTAGE	
120	120V
277	277V
UNV	120-277V
347	347V (not available with EM drivers)

FEATURES

- ▶ Easily change the color temperature on-site with fieldseleCCT® technology.
- ▶ Three switchable CCT settings provide ultimate flexibility – 3000K, 3500K and 4000K
- ▶ Efficacies up to 135 lm/W
- ▶ Small fixture profile allows inconspicuous placement in coves or confined spaces.
- ▶ Round and square lensed fixtures provide a clean look for architectural environments.
- ▶ Row applications produce continuous light with minimal interruption between fixtures.
- ▶ Diffuse acrylic lens on 75R and 75S enhances uniformity and minimizes glare.
- ▶ Variety of mounting accessories for surface and suspended applications.
- ▶ Special reflectors are available to provide precise light distribution (75 only).
- ▶ This fixture is proudly made in the USA.



SPECIFICATIONS

Housing – 22-gauge die-formed C.R.S.
Finish – 92% minimum average reflective white polyester powder coat bonded to phosphate-free, multi-stage pretreated metal. All parts painted after fabrication to facilitate installation, increase efficiency, and inhibit corrosion.

Electrical – High quality mid-power LED boards with switchable CCT – 3000K, 3500K and 4000K. L70 >50,000 hours. fieldseleCCT® products use LEDs of multiple CCTs and may produce a perceptibly different shade of white from single-CCT products at the same CCT. All CCTs are within 3 MacAdam ellipses.

Mounting – Surface or suspended.

Labels – cCSAus certified as luminaire suitable for dry or damp locations.

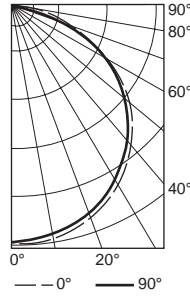
Warranty – 5-year limited warranty, see hew.com/warranty.

IMPORTANT:

Electrostatic sensitive unit. Observe precautions when handling.

PHOTOMETRY

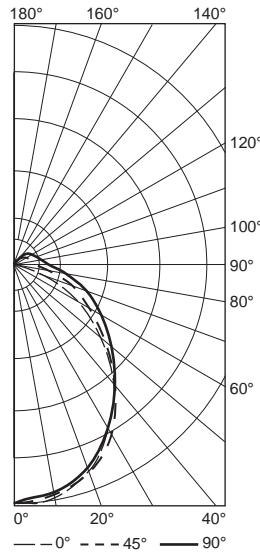
75-4-L60/8FS-DIM_3500K Total Luminaire Output: 6067 lumens | 47 Watts | Efficacy: 129 lm/W



CANDLEPOWER DISTRIBUTION	Vertical Angle	Horizontal Angle			Zonal Lumens
		0°	45°	90°	
0	2060	2060	2060	2060	
5	2075	2053	2045	195	
15	2018	1991	1986	563	
25	1894	1866	1857	863	
35	1718	1683	1663	1055	
45	1469	1427	1415	1104	
55	1163	1124	1110	1006	
65	800	760	745	761	
75	414	386	378	414	
85	73	83	72	103	
90	7	10	7		

LUMEN SUMMARY	Zone	Lumens	% Fixture
	0 - 30	1621	27
	0 - 40	2677	44
	0 - 60	4787	79
	0 - 90	6067	100
	0 - 180	6067	100

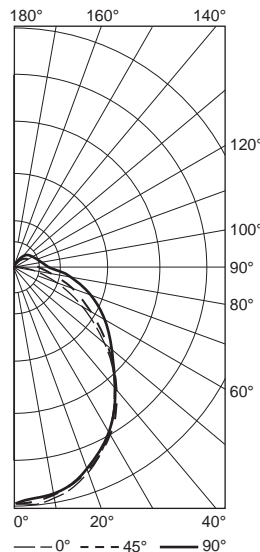
75R-4-L60/8FS_3500K Total Luminaire Output: 5703 lumens | 47 Watts | Efficacy: 121.3 lm/W



CANDLEPOWER DISTRIBUTION	Vertical Angle	Horizontal Angle			Zonal Lumens
		0°	45°	90°	
0	1827	1827	1827		
5	1847	1820	1798	173	
15	1763	1759	1746	495	
25	1589	1624	1637	746	
35	1349	1438	1487	890	
45	1043	1178	1284	902	
55	706	913	1048	799	
65	437	664	786	627	
75	188	444	546	432	
85	44	282	353	266	
90	6	219	287		
95	1	175	232	158	
105	0	105	154	96	
115	0	66	105	58	
125	0	37	71	33	
135	0	20	44	17	
145	0	9	24	7	
155	0	4	11	2	
165	0	0	3	0	
175	0	0	0	0	
180	0	0	0		

LUMEN SUMMARY	Zone	Lumens	% Fixture
	0 - 30	1414	25
	0 - 40	2304	40
	0 - 60	4006	70
	0 - 90	5331	94
	90 - 120	312	6
	90 - 150	369	7
	90 - 180	371	7
	0 - 180	5703	100

75S-4-L60/8FS [3500K] Total Luminaire Output: 5703 lumens | 47 Watts | Efficacy: 121.3 lm/W



CANDLEPOWER DISTRIBUTION	Vertical Angle	Horizontal Angle			Zonal Lumens
		0°	45°	90°	
0	1924	1924	1924		
5	1941	1916	1889	182	
15	1855	1839	1816	517	
25	1656	1664	1636	763	
35	1387	1416	1384	878	
45	1068	1094	1115	851	
55	741	817	909	740	
65	436	591	720	582	
75	190	382	524	396	
85	33	227	346	233	
90	0	173	274		
95	0	162	242	157	
105	0	141	205	130	
115	0	120	180	105	
125	0	98	152	77	
135	0	68	117	50	
145	0	41	79	27	
155	0	25	44	11	
165	0	12	22	3	
175	0	0	0	0	
180	0	0	0		

LUMEN SUMMARY	Zone	Lumens	% Fixture
	0 - 30	1461	26
	0 - 40	2339	41
	0 - 60	3930	69
	0 - 90	5142	90
	90 - 120	392	7
	90 - 150	547	10
	90 - 180	561	10
	0 - 180	5703	100

FIXTURE PERFORMANCE DATA

LED PACKAGE	WATTAGE	75 (no lens)		75R & 75S	
		DELIVERED LUMENS	EFFICACY (lm/W)	DELIVERED LUMENS	EFFICACY (lm/W)
2'					
L15	13.0	1548	119.1	1455	111.9
L20	18.0	2051	113.9	1928	107.1
L30	28.0	3050	108.9	2867	102.4
4'					
L27	20.0	2713	135.7	2551	127.6
L45	33.0	4512	136.7	4242	128.5
L60	47.0	6067	129.1	5703	121.3
8'					
L56	40.0	5658	141.5	5205	130.1
L90	66.0	9024	136.7	8484	128.5
L120	94.0	12134	129.1	11406	121.3

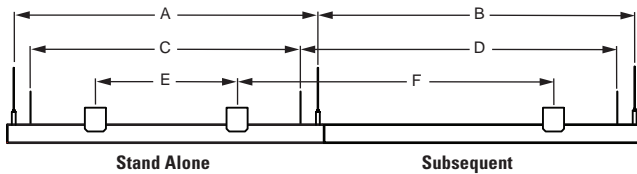
- Photometrics tested in accordance with IESNA LM-79. Results shown are based on 25°C ambient temperature.
- Wattage shown is average for 120V through 277V input.
- Results based on 3500K, 80 CRI, actual lumens may vary +/-5%
- Use multiplier table to calculate additional options.

MULTIPLIER TABLE

COLOR TEMPERATURE	
CCT/CRI	CONVERSION FACTOR
3000K/80CRI	0.94
3500K/80CRI	1.00
4000K/80CRI	0.95

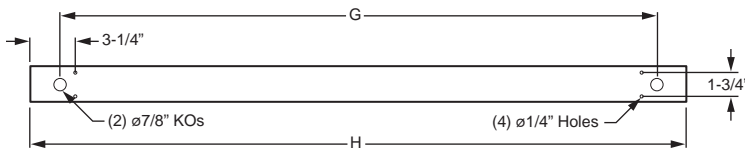
FIXTURE DETAILS

MOUNTING INFORMATION

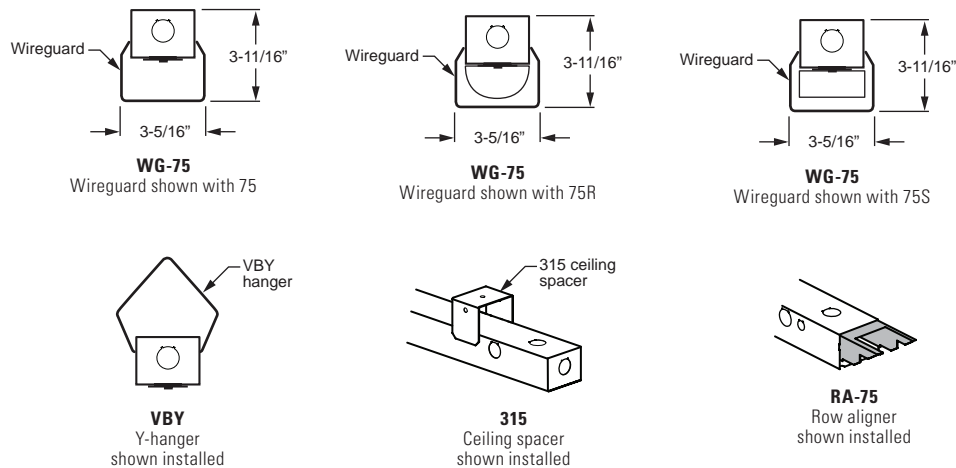


	MOUNTING LENGTH					
	AIRCRAFT CABLE		VBY HANGER		315 SPACER	
	A	B	C	D	E	F
2'	21-1/2"	22-1/2"	19"	22-1/2"	10"	22-1/2"
4'	43-5/8"	44-5/8"	41-1/4"	44-5/8"	32"	44-5/8"
8'	88-3/16"	89-1/4"	85"	89-1/4"	77"	89-1/4"

BACK VIEW



ACCESSORIES DETAILS



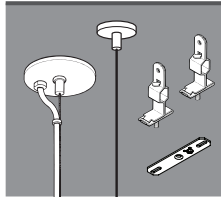
fieldseleCCT SWITCH DETAIL



75S Shown

AIRCRAFT CABLES (requires RA75 row aligner)

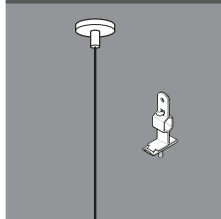
FEEDER FIXTURE – ø1/16" AIRCRAFT CABLE



EXAMPLE: ACF/D48		
MOUNTING	TYPE	LENGTH
ACF/ = Aircraft	D = 1' grid & hardpan	24 = 24"
	N = 9/16" grid	48 = 48"
	S = Slot grid	96 = 96"

Fixtures are provided with adjustable length aircraft cables and mounting hardware, must specify.

JOINER FIXTURE – ø1/16" AIRCRAFT CABLE



EXAMPLE: ACJ/D48		
MOUNTING	TYPE	LENGTH
ACJ/ = Aircraft	D = 1' grid & hardpan	24 = 24"
	N = 9/16" grid	48 = 48"
	S = Slot grid	96 = 96"

Fixtures are provided with adjustable length aircraft cables and mounting hardware, must specify.

NOTE: Electrical supply is brought into the feeder (or stand-alone) fixture, either as part of a row or as an individual mount unit. Joiner fixtures complete the row.

CORD FOR SUSPENDED PRODUCT

Suspended fixtures require cord. Please specify cord type using ordering example below.

EXAMPLE: S2438/W				
CORD TYPE	LENGTH	# OF CONDUCTORS	WIRE SIZE	COLOR
S = Straight	24 = 24"	3 = 3	8 = 18-guage	/B = Black /W = White
	48 = 48"	4 = 4		
	96 = 96"	5 = 5		

SPECIAL REFLECTORS (ordered separately, only available with 75; cannot be used with wireguard accessories)

Example: R1172-4-75LED REFL

