

4.5" ROUND LED DOWNLIGHT

L45

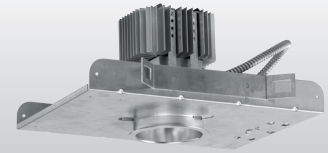
tunable **COLOR**

CATALOG #: _____ TYPE: _____

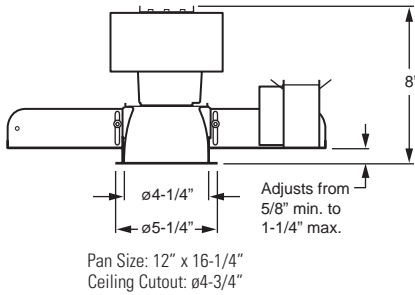
PROJECT: _____ NOTES: _____

EXAMPLE → **L45** - **L24/9TC** - **CS/M** - **OPTIONS** - **DALI** - **120**

SERIES LUMEN PACKAGE CRI & CCT REFLECTOR FINISH DIST. OPTIONS CONTROL VOLTAGE



CROSS SECTION



ORDERING INFORMATION

SERIES
L45 4.5" Round Downlight – Tunable White

LED PACKAGE

Example: L24/9TC		
LUMEN PACKAGE	NOMINAL LUMENS	WATTAGE
L24	2400	75

Nominal lumen output based on 4000 CCT CS reflector and W distribution. Actual lumens may vary +/-5%, see fixture performance data.

COLOR
9TC Tunable color (90 CRI, 1650K–8000K)

REFLECTOR FINISH

CS	Clear semi-specular (standard)
CG	Champagne gold
GD	Gold
PW	Pewter
SG	Satin-glow
SPC	Clear specular
STR	Straw
WH	Painted white reflector, textured (cannot be used with ___/CAL or ___/CGS)
WT	Wheat

DISTRIBUTION¹

W	60° Wide
M	40° Medium
N	30° Narrow

OPTIONS

MWT	Matte white trim
AC/CAL	Accent cone with clear acrylic lens (wide distribution only)
MB/CAL	Micro-baffle with clear acrylic lens (wide distribution only)
AC/CGS	Accent cone with clear glass lens (wide distribution only)
MB/CGS	Micro-baffle with clear glass lens (wide distribution only)
LAD	Acrylic luminous disk (CS reflector only)
LADO	Acrylic luminous disk open (CS reflector only)
LAR	Acrylic luminous ring (CS reflector only)
WET/CC	Wet location, covered ceiling listed (when specified with ___/CAL or ___/CGS options).
WW	Wall wash (wide distribution only; not available with sloped adapter options, AC, MB, AC/___ or MB/___)

CONTROL

See back for details.	
BTL	Bluetooth LE enabled
DALI	DALI Type 8 enabled
DIM	(1) 0-10V signal to control dimming (1) 0-10V signal to control CCT (will only control white light CCT range, will not have pure color output)
DMX	DMX enabled
LUT	Lutron Ecosystem enabled
WS	Wattstopper DLM enabled

VOLTAGE

120	120V
277	277V

FEATURES

- ▶ Tunable color from 1650K to 8000K CCT, minimum 90 CRI.
- ▶ LED module accessible from below ceiling plane for ease of maintenance (top access required for drivers).
- ▶ Optional wet location under covered ceiling available when specified with ___/CAL or ___/CGS option.
- ▶ Finned, extruded aluminum, passive heat sink dissipates heat for superior thermal management.
- ▶ Delivers quality illumination in a small 4.5" aperture.
- ▶ Integral pan throat field-adjusts to accommodate ceilings up to 1-1/4" thick.
- ▶ Self-flanged aluminum reflector offers maximum optical performance and provides crisp, clean installation without unsightly light leaks.
- ▶ Adjustable hanger brackets for bar hangers standard.
- ▶ Sturdy one-piece pan construction.
- ▶ This fixture is proudly made in the USA.

¹ Beam angle/distribution does not account for options/accessories such as accent cone with lens, wall wash, acrylic accent rings, or alternate reflector finishes. Actual beam angle/distribution may vary. Consult factory with complete model number for approximate values.



FIXTURE PERFORMANCE DATA

LED PACKAGE	COLOR	DISTRIBUTION	DELIVERED LUMENS	CRI	WATTAGE	EFFICACY
L24	4000K	W	2558	98	74.9	34.1
		M	1920			25.6
		N	1360			18.2
	RED	W	271	-	12.8	21.1
		M	203			15.9
		N	144			11.2
	BLUE	W	121	-	21.5	5.6
		M	91			4.2
		N	64			3.0
	GREEN	W	865	-	20.1	43.0
		M	649			32.3
		N	460			22.9

SPECIFICATIONS

Housing – 20-gauge die-formed galvanized steel pan/plaster frame with adjustable throat (5/8" to 1-1/4"). Extruded aluminum heat sink.

Reflector – Low-iridescent aluminum. Clear semi-specular (CS) finish standard.

Electrical – Five color, mid-power LED modules. On board thermal and optical feedback ensure color consistency of <2 step MacAdam ellipse (SDCM) and L70>50,000 hours. In-line spectral capture and storage results in consistent CRI and CCT across all arrays.

Mounting – Recessed. Top access required for driver maintenance.

Labels – cETLus conforms to UL STD 1598; Certified to CAN/CSA STD C22.2 No. 250.0. Suitable for damp locations. Suitable for wet location under covered ceiling when specified with AC/CAL or MB/CAL option.

Qualifications – RoHS compliant.

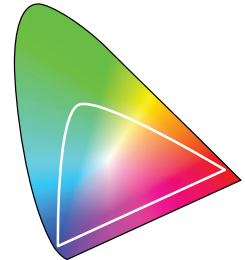
Warranty – 5-year limited warranty, see hew.com/warranty.

- Photometrics tested in accordance with IESNA LM-79. Results shown are based on 25°C ambient temperature.
- Wattage shown is average for 120V through 277V input.
- Results based on 4000K, 90 CRI, actual lumens may vary +/-5%
- Use multiplier table to calculate additional options.

MULTIPLIER TABLE

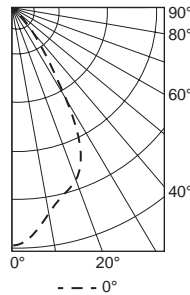
CCT	CONVERSION FACTOR	
	LUMENS	WATTAGE
2000K	0.46	0.45
2700K	0.74	0.63
3000K	0.85	0.74
3500K	0.94	0.87
4000K	1.00	1.00
5000K	0.94	0.97
6000K	0.86	0.96
8000K	0.70	0.81

REFLECTOR FINISH		
CATALOG NUMBER	REFLECTOR FINISH	CONVERSION FACTOR
CS	Clear semi-specular	1.00
SPC	Specular	1.02
CG	Champagne Gold	0.96
GD	Gold	0.93
PW	Pewter	0.86
STR	Straw	0.97
WH	White, textured	0.90
WT	Wheat	0.88



PHOTOMETRY

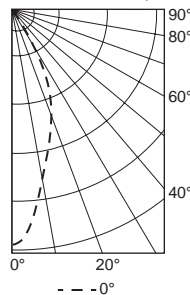
L45-L24/9TC-CS-W-DALI Total Luminaire Output: 2558 lumens; 75 Watts
Efficacy: 34 lm/W | 82.7 CRI; 3494K CCT | IES Spacing Crit.: End: 1.1, Across: 1.2, Diag.: 1.2



CANDLEPOWER DISTRIBUTION	Vertical Angle	Horizontal Angle 0°	Zonal Lumens
	0	3077	
5	2932	271	
15	2463	695	
25	1992	876	
35	683	455	
45	236	185	
55	49	51	
65	13	13	
75	7	7	
85	5	5	
90	5		

LUMEN SUMMARY	Zone	Lumens	% Fixture
	0 - 30	1842	72
	0 - 40	2297	90
	0 - 60	2532	99
	0 - 90	2558	100
	0 - 180	2558	100

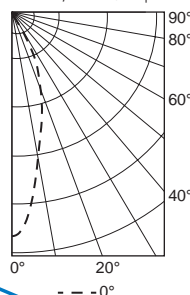
L45-L24/9TC-CS-M-DALI Total Luminaire Output: 1920 lumens; 75 Watts
Efficacy: 26 lm/W | 84.9 CRI; 3544K CCT | IES Spacing Crit.: End: 1.2, Across: 1.2, Diag.: 1.3



CANDLEPOWER DISTRIBUTION	Vertical Angle	Horizontal Angle 0°	Zonal Lumens
	0	4182	
5	3775	334	
15	2432	677	
25	1447	637	
35	295	210	
45	52	43	
55	11	10	
65	6	6	
75	3	3	
85	1	1	
90	1		

LUMEN SUMMARY	Zone	Lumens	% Fixture
	0 - 30	1647	86
	0 - 40	1857	97
	0 - 60	1910	100
	0 - 90	1920	100
	0 - 180	1920	100

L45-L24/9TC-CS-N-DALI Total Luminaire Output: 1360 lumens; 75 Watts
Efficacy: 18 lm/W | 84.9 CRI; 3544K CCT | IES Spacing Crit.: End: 1.2, Across: 1.2, Diag.: 1.3



CANDLEPOWER DISTRIBUTION	Vertical Angle	Horizontal Angle 0°	Zonal Lumens
	0	3631	
5	3222	279	
15	1828	506	
25	957	425	
35	157	121	
45	18	20	
55	4	4	
65	2	2	
75	2	2	
85	2	2	
90	2		

LUMEN SUMMARY	Zone	Lumens	% Fixture
	0 - 30	1210	89
	0 - 40	1331	98
	0 - 60	1354	100
	0 - 90	1360	100
	0 - 180	1360	100

CONTROL DETAILS

DALI



Lutron Ecosystem



Wattstopper DLM



DMX

