

# 4.5" ROUND LED DOWNLIGHT

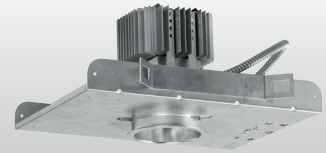
# L45

dim to **WARM**

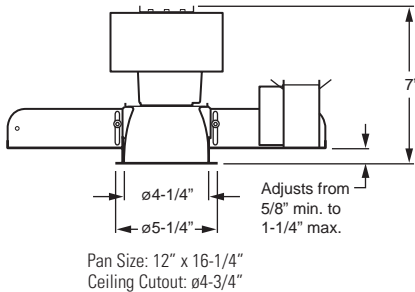
CATALOG #:	TYPE:
PROJECT:	NOTES:

**EXAMPLE** → **L45** - **L12/9DW** - **CS/M** - **OPTIONS** - **DIM** - **120**

SERIES      LUMEN PACKAGE      CRI & CCT      REFLECTOR FINISH      DIST.      OPTIONS      CONTROL      VOLTAGE



## CROSS SECTION



## ORDERING INFORMATION

**SERIES**  
**L45**      4.5" Round Downlight – Dim to Warm

**LED PACKAGE**

Example: L12/9DW		
LUMEN PACKAGE	NOMINAL LUMENS	WATTAGE
L12	1200	30

Nominal lumen output based on full light output, CS reflector and W distribution. Actual lumens may vary +/-5%, see fixture performance data.

**COLOR**  
**9DW**      Dim to warm (90 CRI, 1800K–3000K)

**REFLECTOR FINISH**

**CS**      Clear semi-specular (standard)  
**CG**      Champagne gold  
**GD**      Gold  
**PW**      Pewter  
**SG**      Satin-glow  
**SPC**      Clear specular  
**STR**      Straw  
**WH**      Painted white reflector, textured (cannot be used with \_\_\_/CAL or \_\_\_/CGS)  
**WT**      Wheat

**DISTRIBUTION<sup>1</sup>**

**W**      60° Wide  
**M**      40° Medium  
**N**      30° Narrow

**OPTIONS**

**MWT**      Matte white trim  
**AC/CAL**      Accent cone with clear acrylic lens (wide distribution only)  
**MB/CAL**      Micro-baffle with clear acrylic lens (wide distribution only)  
**AC/CGS**      Accent cone with clear glass lens (wide distribution only)  
**MB/CGS**      Micro-baffle with clear glass lens (wide distribution only)  
**LAD**      Acrylic luminous disk (CS reflector only)  
**LADO**      Acrylic luminous disk open (CS reflector only)  
**LAR**      Acrylic luminous ring (CS reflector only)  
**WET/CC**      Wet location, covered ceiling listed (when specified with \_\_\_/CAL or \_\_\_/CGS options).  
**WW**      Wall wash (wide distribution only; not available with sloped adapter options, AC, MB, AC/\_\_\_ or MB/\_\_\_)

**CONTROL**

**DIM**      (1) 0-10V signal to control dimming and CCT  
**LUT**      Lutron Ecosystem enabled

**VOLTAGE**

**120**      120V  
**277**      277V  
**UNV**      120-277V

## FEATURES

- ▶ Dim to warm from 1800K to 3000K CCT, minimum 90 CRI.
- ▶ LED module accessible from below ceiling plane for ease of maintenance (top access required for driver).
- ▶ Optional wet location under covered ceiling available when specified with \_\_\_/CAL or \_\_\_/CGS option.
- ▶ Finned, extruded aluminum, passive heat sink dissipates heat for superior thermal management.
- ▶ Delivers quality illumination in a small 4.5" aperture.
- ▶ Integral pan throat field-adjusts to accommodate ceilings up to 1-1/4" thick.
- ▶ Self-flanged aluminum reflector offers maximum optical performance and provides crisp, clean installation without unsightly light leaks.
- ▶ Adjustable hanger brackets for bar hangers standard.
- ▶ Sturdy one-piece pan construction.
- ▶ This fixture is proudly made in the USA.

<sup>1</sup> Beam angle/distribution does not account for options/accessories such as accent cone with lens, wall wash, acrylic accent rings, or alternate reflector finishes. Actual beam angle/distribution may vary. Consult factory with complete model number for approximate values.

# L45

dim to **WARM**

## 4.5" ROUND LED DOWNLIGHT

### FIXTURE PERFORMANCE DATA

LED PACKAGE	DISTRIBUTION	DELIVERED LUMENS	CCT AT 100% (FULL OUTPUT)	CCT AT 1% (FULL DIM)	WATTAGE	EFFICACY
L12	W	1168	3050K	1800K	29.7	39.3
	M	876				29.5
	N	621				20.9

### SPECIFICATIONS

**Housing** – 20-gauge die-formed galvanized steel pan/plaster frame with adjustable throat (5/8" to 1-1/4"). Extruded aluminum heat sink.

**Reflector** – Low-iridescent aluminum. Clear semi-specular (CS) finish standard.

**Electrical** – Five color, mid-power LED modules. On board thermal and optical feedback ensure color consistency of <2 step MacAdam ellipse (SDCM) and L70>50,000 hours. In-line spectral capture and storage results in consistent CRI and CCT across all arrays.

**Mounting** – Recessed. Top access required for driver maintenance.

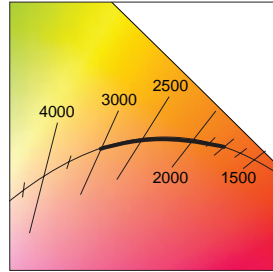
**Labels** – cETLus conforms to UL STD 1598; Certified to CAN/CSA STD C22.2 No. 250.0. Suitable for damp locations. Suitable for wet location under covered ceiling when specified with AC/CAL or MB/CAL option.

**Qualifications** – RoHS compliant.

**Warranty** – 5-year limited warranty, see [hew.com/warranty](http://hew.com/warranty).

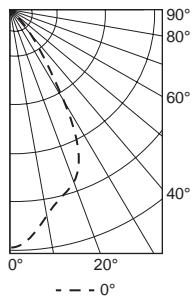
### REFLECTOR FINISH MULTIPLIER TABLE

CATALOG NUMBER	REFLECTOR FINISH	CONVERSION FACTOR
CS	Clear semi-specular	1.00
SPC	Specular	1.02
CG	Champagne Gold	0.96
GD	Gold	0.93
PW	Pewter	0.86
STR	Straw	0.97
WH	White, textured	0.90
WT	Wheat	0.88



### PHOTOMETRY

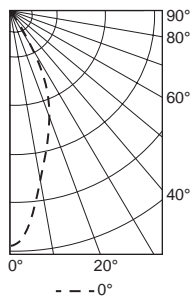
**L45-L12/9DW-CS-W-DIM** Total Luminaire Output: 1168 lumens; 30 Watts | Efficacy: 39 lm/W



CANDLEPOWER DISTRIBUTION	Vertical Angle	Horizontal Angle	Zonal Lumens
	0°	0°	
	0	1264	
	5	1213	113
	15	1051	297
	25	920	406
	35	365	238
	45	112	89
	55	19	20
	65	2	2
	75	1	1
	85	0	0
	90	0	0

LUMEN SUMMARY	Zone	Lumens	% Fixture
	0 - 30	816	70
	0 - 40	1055	90
	0 - 60	1164	100
	0 - 90	1168	100
	0 - 180	1168	100

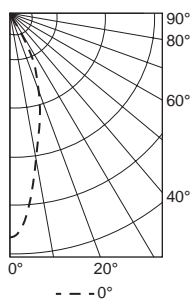
**L45-L12/9DW-CS-M-DIM** Total Luminaire Output: 876 lumens; 30 Watts | Efficacy: 29 lm/W



CANDLEPOWER DISTRIBUTION	Vertical Angle	Horizontal Angle	Zonal Lumens
	0°	0°	
	0	1908	
	5	1722	152
	15	1110	309
	25	660	291
	35	135	96
	45	24	20
	55	5	5
	65	3	3
	75	1	1
	85	0	1
	90	1	

LUMEN SUMMARY	Zone	Lumens	% Fixture
	0 - 30	752	86
	0 - 40	847	97
	0 - 60	872	100
	0 - 90	876	100
	0 - 180	876	100

**L45-L12/9DW-CS-N-DIM** Total Luminaire Output: 621 lumens; 30 Watts | Efficacy: 21 lm/W



CANDLEPOWER DISTRIBUTION	Vertical Angle	Horizontal Angle	Zonal Lumens
	0°	0°	
	0	1658	
	5	1471	128
	15	835	231
	25	437	194
	35	72	55
	45	8	9
	55	2	2
	65	1	1
	75	1	1
	85	1	1
	90	1	

LUMEN SUMMARY	Zone	Lumens	% Fixture
	0 - 30	553	89
	0 - 40	608	98
	0 - 60	618	100
	0 - 90	621	100
	0 - 180	621	100