

# 6" ROUND LED DOWNLIGHT

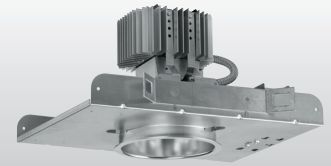
# L60

dim to **WARM**

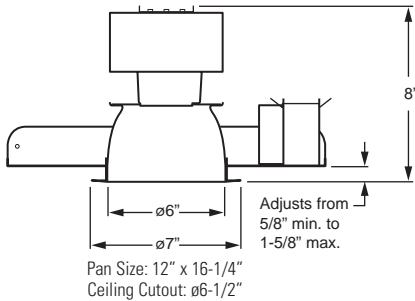
CATALOG #:	TYPE:
PROJECT:	NOTES:

**EXAMPLE** → **L60** - **L13/9DW** - **CS/M** - **OPTIONS** - **DIM** - **120**

SERIES      LUMEN PACKAGE      CRI & CCT      REFLECTOR DIST. FINISH      OPTIONS      CONTROL      VOLTAGE



## CROSS SECTION



## ORDERING INFORMATION

### SERIES

**L60** 6" Round LED Downlight – Dim to Warm

### LED PACKAGE

Example: L13/9DW		
LUMEN PACKAGE	NOMINAL LUMENS	WATTAGE
<b>L13</b>	1300	30

Nominal lumen output based on full light output, CS reflector and W distribution. Actual lumens may vary +/-5%, see fixture performance data.

### COLOR

**9DW** Dim to warm (90 CRI, 1800K–3000K)

### REFLECTOR FINISH

<b>CS</b>	Clear semi-specular (standard)
<b>CG</b>	Champagne gold
<b>GD</b>	Gold
<b>PW</b>	Pewter
<b>SG</b>	Satin-glow
<b>SPC</b>	Clear specular
<b>STR</b>	Straw
<b>WH</b>	Painted white reflector, textured (cannot be used with ___/CAL or ___/CGS)
<b>WT</b>	Wheat

### DISTRIBUTION <sup>1</sup>

<b>W</b>	75° Wide
<b>M</b>	50° Medium

### OPTIONS

<b>MWT</b>	Matte white trim
<b>AC/CAL</b>	Accent cone with clear acrylic lens (wide distribution only)
<b>MB/CAL</b>	Micro-baffle with clear acrylic lens (wide distribution only)
<b>AC/CGS</b>	Accent cone with clear glass lens (wide distribution only)
<b>MB/CGS</b>	Micro-baffle with clear glass lens (wide distribution only)
<b>LAD</b>	Acrylic luminous disk (CS reflector only)
<b>LADO</b>	Acrylic luminous disk open (CS reflector only)
<b>LAR</b>	Acrylic luminous ring (CS reflector only)
<b>SCA__</b>	Sloped ceiling adapter (specify degrees of slope in 5° increments, 5°-30°. SCA increases fixture height, see Information for details.)
<b>WET/CC</b>	Wet location, covered ceiling listed (when specified with ___/CAL or ___/CGS options).
<b>WW</b>	Wall wash (wide distribution only; not available with sloped adapter options, AC, MB, AC/___ or MB/___)

### CONTROL

<b>DIM</b>	(1) 0-10V signal to control dimming and CCT
<b>LUT</b>	Lutron Ecosystem enabled

### VOLTAGE

<b>120</b>	120V
<b>277</b>	277V
<b>UNV</b>	120-277V

## FEATURES

- ▶ Dim to warm from 1800K to 3000K CCT, minimum 90 CRI.
- ▶ LED module accessible from below ceiling plane for ease of maintenance (top access required for driver).
- ▶ Optional wet location under covered ceiling available when specified with \_\_\_/CAL or \_\_\_/CGS option.
- ▶ Finned, extruded aluminum, passive heat sink dissipates heat for superior thermal management.
- ▶ Integral pan throat field-adjusts to accommodate ceilings up to 1-5/8" thick.
- ▶ Self-flanged aluminum reflector offers maximum optical performance and provides crisp, clean installation without unsightly light leaks.
- ▶ Adjustable hanger brackets for bar hangers standard.
- ▶ Sturdy one-piece pan construction.
- ▶ This fixture is proudly made in the USA.

<sup>1</sup> Beam angle/distribution does not account for options/accessories such as accent cone with lens, acrylic accent rings, wall wash, or alternate reflector finishes. Actual beam angle/distribution may vary. Consult factory with complete model number for approximate values.



# L60

dim to **WARM**

## 6" ROUND LED DOWNLIGHT

### SPECIFICATIONS

**Housing** – 20-gauge die-formed galvanized steel pan/plaster frame with adjustable throat (5/8" to 1-5/8"). Extruded aluminum heat sink.

**Reflector** – Low- iridescent aluminum. Clear semi-specular (CS) finish standard.

**Electrical** – Five color, mid-power LED modules. On board thermal and optical feedback ensure color consistency of <2 step MacAdam ellipse (SDCM) and L70>50,000 hours. In-line spectral capture and storage results in consistent CRI and CCT across all arrays.

**Mounting** – Recessed. Top access required for driver maintenance.

**Labels** – cETLus conforms to UL STD 1598; Certified to CAN/CSA STD C22.2 No. 250.0. Suitable for damp locations. Suitable for wet location under covered ceiling when specified with AC/CAL or MB/CAL option.

**Qualifications** – RoHS compliant.

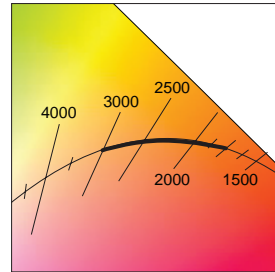
**Warranty** – 5-year limited warranty, see [hew.com/warranty](http://hew.com/warranty).

### FIXTURE PERFORMANCE DATA

LED PACKAGE	DISTRIBUTION	DELIVERED LUMENS	CCT AT 100% (FULL OUTPUT)	CCT AT 1% (FULL DIM)	WATTAGE	EFFICACY
L13	W	1314	3050K	1800K	29.7	44.2
	M	1242				41.8

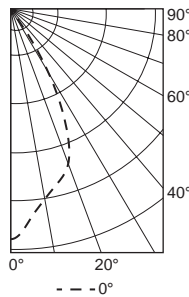
- Photometrics tested in accordance with IESNA LM-79. Results shown are based on 25°C ambient temperature.
- Wattage shown is average for 120V through 277V input.
- Actual lumens may vary +/-5%.
- Use multiplier table to calculate additional options.

REFLECTOR FINISH MULTIPLIER TABLE		
CATALOG NUMBER	REFLECTOR FINISH	CONVERSION FACTOR
CS	Clear semi-specular	1.00
SPC	Specular	1.02
CG	Champagne Gold	0.96
GD	Gold	0.93
PW	Pewter	0.86
STR	Straw	0.97
WH	White, textured	0.90
WT	Wheat	0.88



### PHOTOMETRY

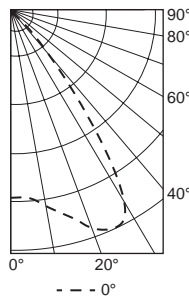
**L60-L13/9DW-CS-M-DIM** Total Luminaire Output: 1242 lumens; 30 Watts | Efficacy: 42 lm/W



CANDLEPOWER DISTRIBUTION	Vertical Angle	Horizontal Angle 0°	Zonal Lumens
	0	1871	
	5	1722	159
	15	1458	410
	25	1045	467
	35	242	176
	45	30	26
	55	2	3
	65	1	1
	75	0	0
	85	0	0
90	0	0	

LUMEN SUMMARY	Zone	Lumens	% Fixture
	0 - 30	1036	83
	0 - 40	1212	98
	0 - 60	1240	100
	0 - 90	1242	100
0 - 180	1242	100	

**L60-L13/9DW-CS-W-DIM** Total Luminaire Output: 1314 lumens; 30 Watts | Efficacy: 44 lm/W



CANDLEPOWER DISTRIBUTION	Vertical Angle	Horizontal Angle 0°	Zonal Lumens
	0	806	
	5	809	79
	15	913	263
	25	1032	469
	35	590	367
	45	128	106
	55	17	19
	65	6	6
	75	3	3
	85	1	2
90	1		

LUMEN SUMMARY	Zone	Lumens	% Fixture
	0 - 30	811	62
	0 - 40	1178	90
	0 - 60	1303	99
	0 - 90	1314	100
0 - 180	1314	100	

