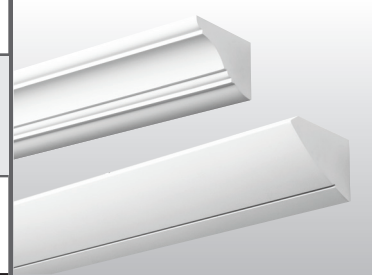


# DESIGNERLINE SMALL WALL MOUNT COVE

# SMC

tunable **WHITE** | PoE



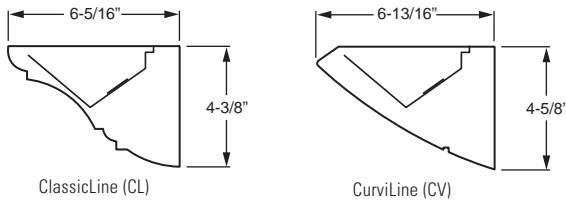
CATALOG #: \_\_\_\_\_ TYPE: \_\_\_\_\_

PROJECT: \_\_\_\_\_ NOTES: \_\_\_\_\_

**EXAMPLE** **SMC CL - 4 - P50/840 - F / F - OPTIONS - POEN**

SERIES STYLE NOMINAL LENGTH LUMEN PACKAGE CRI & CCT FIXT. TYPE END CAP OPTIONS/ACCESSORIES CONTROL

## CROSS SECTIONS



## ORDERING INFORMATION

**SERIES**  
**SMC** DesignerLine Small Wall Mount Cove – PoE

**STYLE**  
**CL** Classic  
**CV** CurviLine

**NOMINAL LENGTH**  
**4** 4'  
**8** 8'

**LED PACKAGE**

EXAMPLE: P50/840		
LUMEN PACKAGE	NOMINAL LUMENS	WATTAGE
4'		
<b>P30</b>	3,000	24
<b>P50</b>	5,000	37
8'		
<b>P60</b>	6,000	44

Nominal lumen output based on 4000K for single CCT and TW. Actual lumens may vary +/-5%, see fixture performance data.

**CRI & CCT**

<b>827</b>	82 CRI, 2700K
<b>830</b>	82 CRI, 3000K
<b>835</b>	82 CRI, 3500K
<b>840</b>	82 CRI, 4000K
<b>850</b>	82 CRI, 5000K
<b>8TW</b>	Tunable white (80 CRI, 3000K–5000K)

**FIXTURE TYPE**

**F** Electrical feeder unit, left end cap installed  
**J** Joiner unit, no end caps  
**E** End unit, right end cap installed  
**S** Stand-alone unit, two end caps installed

**END CAP STYLE**

**F** Flat ends  
**M** Mitered ends (increases overall length, see back for details)

**OPTIONS**

**EM/CP12** Remote mount 12-watt lota emergency LED battery, controls ambient compartment only (requires one additional category cable run to switch, see page 3 for details)  
**AMW** Anti-microbial white finish

**ACCESSORIES**  
 See [hew.com/poe](http://hew.com/poe) for compatible sensors & switches

**CONTROL**  
 For additional PoE info, see [hew.com/poe](http://hew.com/poe)  
**POEN** Power over Ethernet network node  
**POED** Power over Ethernet device node

## FEATURES

- ▶ Williams turn-key Power over Ethernet (PoE) solution provides plug-and-play networked lighting and control.
- ▶ Tunable white from 3000K to 5000K CCT, minimum 80 CRI.
- ▶ Efficacies up to 136 lm/W.
- ▶ Architecturally styled cove creates a comfortable, low glare environment without cluttering the ceiling surface
- ▶ Quality workmanship and attention to detail encompasses this small scale indirect luminaire designed to perform well in spaces with low to moderate ceiling heights
- ▶ Common applications include smaller offices, corridors, healthcare facilities and areas where it is important to avoid typical glare
- ▶ The DesignerLine Small Cove is part of an extensive system of matched products
- ▶ Heavy-duty hook-on mounting brackets make it easy to securely install and level fixtures
- ▶ Joiner and alignment system permit mounting in continuous rows with hairline seams that virtually disappear
- ▶ Optional anti-microbial white finish available for use in healthcare applications
- ▶ This fixture is proudly made in the USA

## SYSTEM REQUIREMENTS

- Lighting system (site software)
- Gateway or alternate server (runs software)
- PoE switches or Ethernet switches and mid-span power injectors
- See [hew.com/poe](http://hew.com/poe) for details

### SPECIFICATIONS

**Housing/Reflector** – Seam-welded extruded aluminum.

**Weight** – 5 lbs. per foot

**End Caps** – Aluminum, welded, seam-filled and finished at ends of individual units and rows.

**Reflective Surfaces** – 92% minimum average reflective white polyester powder coat on interior components.

**Shielding** – Frosted acrylic, .125" thick.

**Finish** – Textured matte white polyester TGIC powder coat bonded to phosphate-free, multi-stage pretreated metal. All parts painted after fabrication to facilitate installation, increase efficiency, and inhibit corrosion.

**Electrical** – High quality mid-power LED board. L70 > 60,000 hours per IES TM-21. Low-voltage DC fixture, to be fed by Class 2 power supply. Tunable White products use LEDs of multiple CCTs and may produce a perceptibly different shade of white from single-CCT products at the same CCT. All CCTs are within 3 MacAdam ellipses.

**Mounting** – Wall mount, individual units or continuous rows.

**Labels** – cCSAus certified as luminaire suitable for dry or damp locations.

**Warranty** – 5-year limited warranty, see hew.com/warranty.

### IMPORTANT:

Electrostatic sensitive unit. Observe precautions when handling.

### FIXTURE PERFORMANCE DATA

#### STANDARD

LED PACKAGE	DELIVERED LUMENS	WATTAGE	EFFICACY (lm/W)
4'			
P30	3030	23.8	127.3
P50	5020	36.9	136.0
8'			
P60	6009	44.4	135.3

#### TUNABLE WHITE

LED PACKAGE	DELIVERED LUMENS	WATTAGE	EFFICACY (lm/W)
4'			
P30	3030	25.1	120.8
P50	5028	41.7	120.7
8'			
P60	6009	47.0	127.8

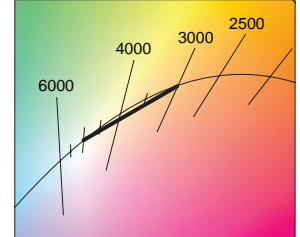
### MULTIPLIER TABLES

#### STANDARD

CCT	CONVERSION FACTOR
2700K	0.94
3000K	0.96
3500K	0.97
4000K	1.00
5000K	1.03

#### TUNABLE WHITE

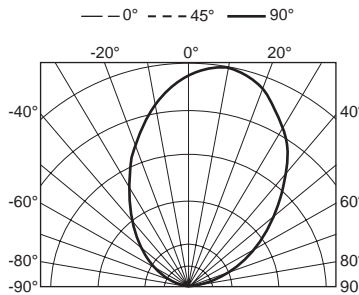
CCT	CONVERSION FACTOR
3000K	0.95
3500K	0.98
4000K	1.00
5000K	0.96



- Photometrics tested in accordance with IESNA LM-79. Results shown are based on 25°C ambient temperature.
- Results based on 4000K standard, 80 CRI, actual lumens may vary +/-5%
- Use multiplier table to calculate additional options.

### PHOTOMETRY

**SMCCL-4-P50/840-POE** Total Luminaire Output: 5020 lumens; 36.9 Watts | Efficacy: 136 lm/W

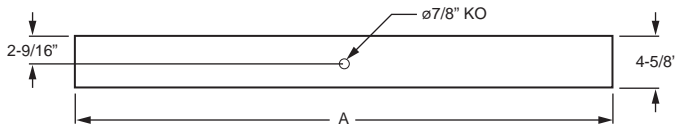


Vertical Angle	Horizontal Angle					Zonal Lumens
	0°	45°	90°	135°	180°	
90	4	6	18	6	7	
95	97	112	124	89	77	112
105	336	339	304	229	198	305
115	625	619	542	403	346	512
125	978	962	840	628	545	716
135	1384	1350	1164	892	794	868
145	1775	1716	1502	1209	1086	914
155	2066	2012	1796	1526	1413	815
165	2269	2201	2024	1853	1778	569
175	2271	2229	2174	2077	2083	205
180	2192	2192	2192	2192	2192	

LUMEN SUMMARY	Zone	Lumens	% Fixture
	90-120	929	19
90-130	1646	33	
90-150	3428	68	
90-180	5017	100	
0-180	5020	100	

## FIXTURE DETAILS

### BACK VIEW



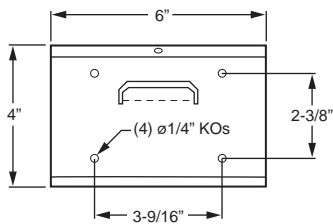
NOMINAL LENGTH	ACTUAL LENGTH (A)
4'	46-3/16"
8'	92-1/8"

**Note:** Mitered ends add to overall length, see details at right.

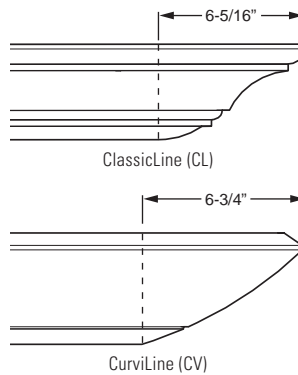
### FIXTURE TYPE DETAILS (ClassicLine shown)

	F	J	E	S
Mitered				
Flat				

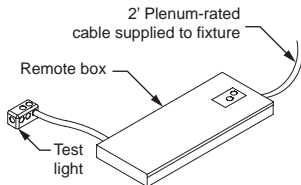
### WALL MOUNT BRACKET



### MITERED END DETAILS



### REMOTE MOUNT EM OPTION DETAILS



Includes 2' plenum rated 18ga. solid cable.

Remote box can be installed in:

- Above ceiling grid
- Remote closet (within 100ft)
- Surface below ceiling

See [Technical Info](#) for dimension details.