

# LOW-PROFILE TROFFER

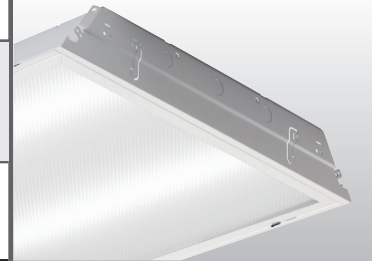
# LPT

tunable **WHITE** | PoE

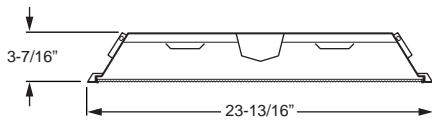
CATALOG #:	TYPE:
PROJECT:	NOTES:

**EXAMPLE** → **LPT - 2 4 - P70/835 - S AF12095 - OPTIONS - POE N**

SERIES      NOM. W.    NOM. L.      LUMEN PACKAGE      CRI & CCT      DOOR FRAME      SHIELDING      OPTIONS/ACCESSORIES      CONTROL



## CROSS SECTION



## ORDERING INFORMATION

**SERIES**  
LPT Low-Profile Troffer – PoE

**NOMINAL WIDTH**  
2      2'

**NOMINAL LENGTH**  
2      2'  
4      4'

**LED PACKAGE**  
**NOTE:** Nominal lumens are based on AF12095 shielding.

EXAMPLE: P70/835		
LUMEN PACKAGE	NOMINAL LUMENS	WATTAGE
2x2		
P31	3,100	25
2x4		
P70	7,000	52

Nominal lumen output based on 3500K for single CCT and 4000K for TW. Actual lumens may vary +/-5%, see fixture performance data.

**CRI & CCT**

827	82 CRI, 2700K
830	82 CRI, 3000K
835	82 CRI, 3500K
840	82 CRI, 4000K
850	82 CRI, 5000K
8TW	Tunable white (80 CRI, 3000K–5000K)

**DOOR FRAME**  
S White flat steel

**SHIELDING**

**AF12095** Frosted acrylic, pattern #12, .095" thick  
**A12125** Clear acrylic, pattern #12, .125" thick (LED pixelation will be visible)  
**AF12125** Frosted acrylic, pattern #12, .125" thick  
**A19156** Clear acrylic, pattern #19, .156" thick (LED pixelation will be visible)  
**AF19156** Frosted acrylic, pattern #19, .156" thick

**OPTIONS**

**EM/CP12** Remote mount 12-watt Iota emergency LED battery, controls ambient compartment only (requires one additional category cable run to switch, see page 2 for details)  
**EQCLIPS** Earthquake clips (4 per fixture)

**ACCESSORIES**  
See [hew.com/poe](http://hew.com/poe) for compatible sensors & switches

**CONTROL**  
For additional PoE info, see [hew.com/poe](http://hew.com/poe)  
**POE N** Power over Ethernet network node  
**POE D** Power over Ethernet device node

## FEATURES

- ▶ Williams turn-key Power over Ethernet (PoE) solution provides plug-and-play networked lighting and control.
- ▶ Tunable white from 3000K to 5000K CCT, minimum 80 CRI.
- ▶ Efficacies up to 135 lm/W.
- ▶ 3-7/16" deep housing installs easily within limited plenum space.
- ▶ Gasketed door frame features offset mitered corners to eliminate light leaks.
- ▶ Cam latches close securely and allow hassle-free maintenance.
- ▶ Reversible door hinges and latches allow access on either side.
- ▶ Deep reinforcement ribs provide added strength.
- ▶ Integral T-bar clips quickly secure fixture to structure.
- ▶ This fixture is proudly made in the USA.

## SYSTEM REQUIREMENTS

- Lighting system (site software)
- Gateway or alternate server (runs software)
- PoE switches or Ethernet switches and mid-span power injectors
- See [hew.com/poe](http://hew.com/poe) for details



### SPECIFICATIONS

**Housing** – 22-gauge die-formed C.R.S.  
**Door Frame** – 22-gauge C.R.S., offset mitered corners, cam latches, and T-style hinges.  
**Shielding** – Frosted acrylic, pattern #12, .095" thick.  
**Finish** – 92% minimum average reflective white polyester powder coat bonded to phosphate-free, multi-stage pretreated metal. All parts painted after fabrication to facilitate installation, increase efficiency, and inhibit corrosion.  
**Electrical** – High quality mid-power LED board. L70 > 50,000 hours per IES TM-21. Low-voltage DC fixture, to be fed by Class 2 power supply. Tunable White products use LEDs of multiple CCTs and may produce a perceptibly different shade of white from single-CCT products at the same CCT. All CCTs are within 3 MacAdam ellipses.  
**Mounting** – NEMA Type "G" standard. For flange installations use the Drywall Kit (DFK), ordered separately, see Information section.  
**Labels** – cCSAus certified as luminaire suitable for dry or damp locations.  
**Warranty** – 5-year limited warranty, see [hew.com/warranty](http://hew.com/warranty).

### IMPORTANT:

Electrostatic sensitive unit. Observe precautions when handling.

### FIXTURE PERFORMANCE DATA

#### STANDARD

LED PACKAGE	DELIVERED LUMENS	WATTAGE	EFFICACY (lm/W)
2x2			
P31	3122	25.3	123.5
2x4			
P70	7012	51.7	135.8

#### TUNABLE WHITE

LED PACKAGE	DELIVERED LUMENS	WATTAGE	EFFICACY (lm/W)
2x2			
P31	3116	25.6	122.0
2x4			
P70	7041	52.3	134.5

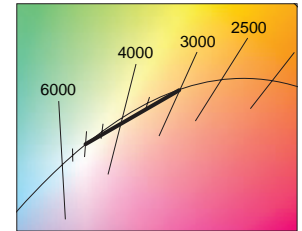
### MULTIPLIER TABLES

#### STANDARD

CCT	CONVERSION FACTOR
2700K	0.97
3000K	0.99
3500K	1.00
4000K	1.03
5000K	1.06

#### TUNABLE WHITE

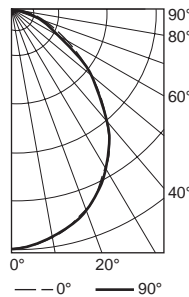
CCT	CONVERSION FACTOR
3000K	0.95
3500K	0.98
4000K	1.00
5000K	0.96



- Photometrics tested in accordance with IESNA LM-79. Results shown are based on 25°C ambient temperature.
- Standard results based on 3500K standard, 80 CRI, actual lumens may vary +/-5%
- Tunable white results based on 4000K standard, 80 CRI, actual lumens may vary +/-5%
- Use multiplier table to calculate additional options.

### PHOTOMETRY

**LPT-24-P70/835-SAF12095** Total Luminaire Output: 7012 lumens; 51.7 Watts | Efficacy: 136lm/W | 82 CRI; 3457K CCT

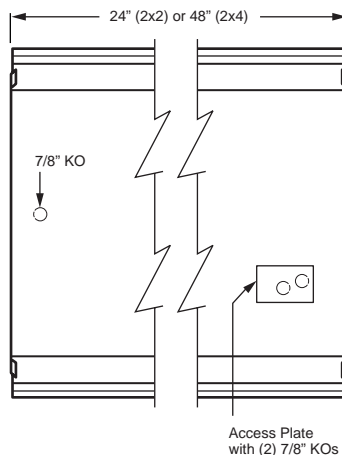


VERTICAL ANGLE	HORIZONTAL ANGLE			ZONAL LUMENS
	0°	45°	90°	
0	3208	3208	3208	
5	3160	3157	3157	300
15	2991	2991	2994	845
25	2700	2700	2710	1240
35	2245	2245	2252	1396
45	1666	1643	1617	1265
55	1070	1012	971	921
65	612	556	558	578
75	309	294	332	336
85	118	120	144	131
90	0	0	0	

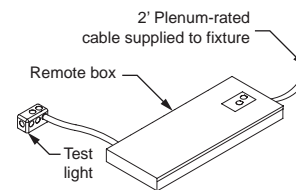
LUMEN SUMMARY	ZONE	LUMENS	% FIXTURE
	0 - 30	2385	34
	0 - 40	3781	54
	0 - 60	5967	85
	0 - 90	7012	100
	0 - 180	7012	100

### FIXTURE DETAILS

#### BACK VIEW



#### REMOTE MOUNT EM OPTION DETAILS



Includes 2' plenum rated 18ga. solid cable. Remote box can be installed in:

- Above ceiling grid
- Remote closet (within 100ft)
- Surface below ceiling

See [Technical Info](#) for dimension details.