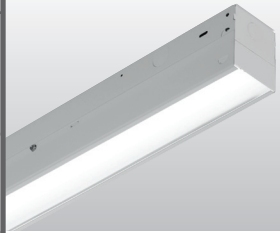


LENSED LED STRIP

75L

tunable **WHITE**

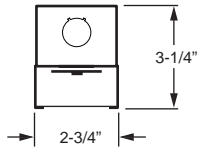


CATALOG #:	TYPE:
PROJECT:	NOTES:

EXAMPLE → **75L** - **4** - **L65/8TW** - **DMA** - **OPTIONS** - **DALI** - **UNV**

SERIES NOMINAL LENGTH LUMEN PACKAGE CRI & CCT SHIELDING OPTIONS/ACCESSORIES CONTROL VOLTAGE

CROSS SECTION



ORDERING INFORMATION

SERIES
75L Lensed Strip – Tunable White

NOMINAL LENGTH

2	2' (Actual length 22-1/2")
4	4' (Actual length 44-5/8")
8	8' (Actual length 89-1/4")

LED PACKAGE

Example: L65/8TW		
LUMEN PACKAGE	NOMINAL LUMENS	WATTAGE
2'		
L25	2,500	25
4'		
L35	3,500	32
L65	6,500	60
8'		
L70	7,000	64
L130	13,000	110

Nominal lumen output based on 4000K CCT. Actual lumens may vary +/-5%, see fixture performance data. Additional LED lumen packages available, see options.

CRI & CCT
8TW Tunable white (80 CRI, 3000K–5000K)

SHIELDING

A12125	Acrylic, pattern #12, .125" thick
DMA	Diffused matte acrylic, .080" thick

OPTIONS

Suspended fixtures require cord, see page 3.

EM/10WLP Low-profile 10-watt emergency LED battery (4' and 8' only; must specify 120V or 277V; not available with L65 and L130 lumen packages)

EM/10W REMOTE Remote mount 10-watt emergency LED battery (2' only; must specify 120V or 277V)

(L__) Additional lower lumen packages available. Specify in increments of 100 nominal lumens. Option must be specified with next higher lumen package.
Example: 5,500 nominal lumens = 75L-4-L65/8TW-(L55).

ACCESSORIES

Aircraft cable accessories available, see page 4. See page 4 for accessories details.

WG-75 11-gauge white powder coat wireguard
315 1-1/2" ceiling spacer
VBV (2) Y-hangers
VBV-2 (2) Y-hangers and (2) 2' chains
RA-75 Row aligner (required when mounting with aircraft cables)

CONTROL

See page 4 for details.

DALI Driver prewired for DALI applications
DIM (1) 0-10V signal to control dimming
(1) 0-10V signal to control CCT
DMX Driver prewired for DMX applications

VOLTAGE

120	120V
277	277V
UNV	120-277V

FEATURES

- ▶ Tunable white from 3000K to 5000K CCT, minimum 80 CRI.
- ▶ Small fixture profile allows inconspicuous placement in coves or confined spaces.
- ▶ Frosted or prismatic lens protects LEDs and improves appearance.
- ▶ Efficacies up to 120 lm/W.
- ▶ Row applications produce continuous light with minimal interruption between fixtures.
- ▶ Power and light levels can be custom set to meet energy and design needs in applications ranging from coves to high-ceiling common areas.
- ▶ This fixture is proudly made in the USA.



tunable **WHITE**

SPECIFICATIONS

Housing – 22-gauge die-formed C.R.S.
Finish – 92% minimum average reflective white polyester powder coat bonded to phosphate-free, multi-stage pretreated metal. All parts painted after fabrication to facilitate installation, increase efficiency, and inhibit corrosion.

Shielding – Acrylic, pattern #12, .125" thick.

Electrical – High quality mid-power LED board. L70 > 50,000 hours per IES TM-21. Tunable White products use LEDs of multiple CCTs and may produce a perceptibly different shade of white from single-CCT products at the same CCT. All CCTs are within 3 MacAdam ellipses.

Mounting – Surface (ceiling or wall) or suspended.

Labels – cETLus conforms to UL STD 1598. Certified to CAN/CSA STD C22.2 No. 250.0. Suitable for damp locations.

Warranty – 5-year limited warranty, see hew.com/warranty.

IMPORTANT:

Electrostatic sensitive unit. Observe precautions when handling.

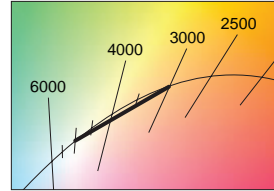
FIXTURE PERFORMANCE DATA

LED PACKAGE	DELIVERED LUMENS	WATTAGE	EFFICACY (lm/W)
2'			
L25	2551	24.6	103.7
4'			
L35	3515	32.2	109.2
L65	6620	60.0	110.3
8'			
L70	7030	64.4	109.2
L130	13240	110.3	120.0

- Photometrics tested in accordance with IESNA LM-79. Results shown are based on 25°C ambient temperature.
- Wattage shown is average for 120V through 277V input.
- Results based on 4000K, 80 CRI, actual lumens may vary +/-5%
- Use multiplier table to calculate additional options.

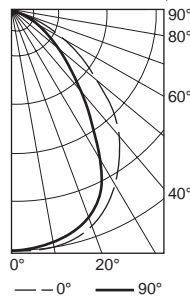
MULTIPLIER TABLE

CCT	CONVERSION FACTOR	
	LUMENS	WATTAGE
3000K	0.95	1.04
3500K	0.98	1.02
4000K	1.00	1.00
5000K	0.96	1.04



PHOTOMETRY

7L5-4-L65/8TW-DMA-DALI Report #: 17956.0; 3/10/14 | Total Luminaire Output: 6621 lumens; 60.0 Watts
 Efficacy: 110.0 lm/W | 82.3 CRI; 3578K CCT | IES Spacing Criteria: End: 1.3, Across: 1.1

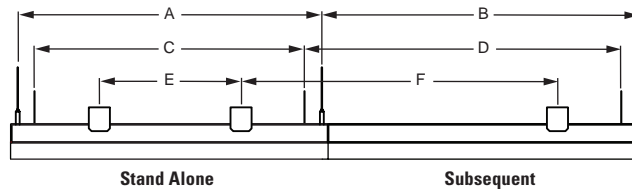


CANDLE POWER DISTRIBUTION	VERTICAL ANGLE	HORIZONTAL ANGLE		ZONAL LUMENS
	0°	0°	90°	
		45°	90°	
0	2949	2949	2949	
5	3009	2932	2882	278
15	2862	2782	2707	784
25	2589	2476	2352	1140
35	2207	2037	1867	1277
45	1732	1522	1322	1187
55	1212	1030	874	940
65	752	612	512	626
75	362	285	240	312
85	83	60	57	76
90	0	0	0	

LUMEN SUMMARY	ZONE	LUMENS	% FIXTURE
	0 - 30	2203	33
	0 - 40	3480	53
	0 - 60	5607	85
	0 - 90	6621	100
	0 - 180	6621	100

FIXTURE DETAILS

MOUNTING INFORMATION



	MOUNTING LENGTH					
	AIRCRAFT CABLE		VBY HANGER		315 SPACER	
	A	B	C	D	E	F
2'	21-1/2"	22-1/2"	19"	22-1/2"	10"	22-1/2"
4'	43-5/8"	44-5/8"	41-1/4"	44-5/8"	32"	44-5/8"
8'	88-3/16"	89-1/4"	85"	89-1/4"	77"	89-1/4"

BACK VIEW



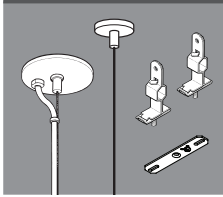
	7/8" KOs (G)	ACTUAL FIXTURE LENGTH (H)
2'	18-3/8"	22-1/2"
4'	40-1/2"	44-5/8"
8'	85-1/8"	89-1/4"



AIRCRAFT CABLES (requires RA75 row aligner)

For suspended fixtures only. Please specify cable hardware using ordering example below.

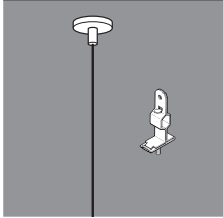
FEEDER FIXTURE – ø1/16" AIRCRAFT CABLE



EXAMPLE: ACF/D48		
MOUNTING	TYPE	LENGTH
ACF/ = Aircraft	D = 1" grid & hardpan	24 = 24"
	N = 9/16" grid	48 = 48"
	S = Slot grid	96 = 96"

Fixtures are provided with adjustable length aircraft cables and mounting hardware, must specify.

JOINER FIXTURE – ø1/16" AIRCRAFT CABLE



EXAMPLE: ACJ/D48		
MOUNTING	TYPE	LENGTH
ACJ/ = Aircraft	D = 1" grid & hardpan	24 = 24"
	N = 9/16" grid	48 = 48"
	S = Slot grid	96 = 96"

Fixtures are provided with adjustable length aircraft cables and mounting hardware, must specify.

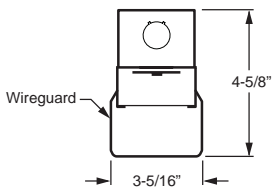
NOTE: Electrical supply is brought into the feeder (or stand-alone) fixture, either as part of a row or as an individual mount unit. Joiner fixtures complete the row.

CORD FOR SUSPENDED PRODUCT

Suspended fixtures require cord. Please specify cord type using ordering example below.

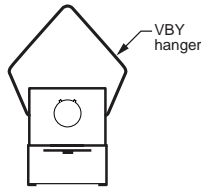
EXAMPLE: S24/W		
CORD TYPE	LENGTH	COLOR
S = Straight	24 = 24"	/B = Black
	48 = 48"	/W = White
	96 = 96"	

ACCESSORIES DETAILS



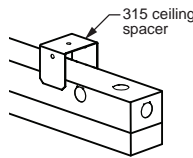
WG-75

Wireguard shown installed



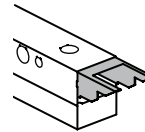
VBY

Y-hanger shown installed



315

Ceiling spacer shown installed



RA-75

Row aligner shown installed

CONTROL DETAILS

DIM



DALI



DMX

