

LOW-PROFILE TROFFER

LPT

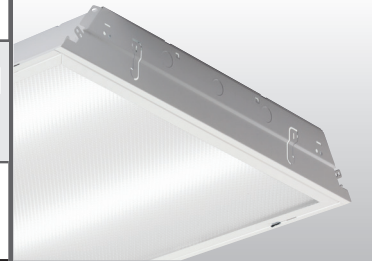
tunable **WHITE**

CATALOG #:	TYPE:
PROJECT:	NOTES:

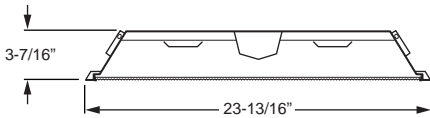
EXAMPLE

LPT - 2 4 - L81/8TW - S AF12095 - OPTIONS - DALI - UNV

SERIES NOM. W. NOM. L. LUMEN PACKAGE CRI & CCT DOOR FRAME SHIELDING OPTIONS/ACCESSORIES CONTROL VOLTAGE



CROSS SECTION



ORDERING INFORMATION

SERIES
LPT Low-Profile Troffer – Tunable White

NOMINAL WIDTH
 2 2'

NOMINAL LENGTH
 2 2'
 4 4'

LED PACKAGE

EXAMPLE: L81/8TW		WATTAGE
LUMEN PACKAGE	NOMINAL LUMENS	
2x2		
L45	4,500	41
2x4		
L45	4,500	35
L81	8,100	63

Nominal lumen output based on 4000K CCT and AF12095 shielding. Actual lumens may vary +/-5%, see fixture performance data. Additional LED lumen packages available, see options.

CRI & CCT
8TW Tunable white (80 CRI, 3000K–5000K)

DOOR FRAME
S White flat steel

SHIELDING
AF12095 Frosted acrylic, pattern #12, .095" thick
A12125 Clear acrylic, pattern #12, .125" thick (LED pixelation will be visible)
AF12125 Frosted acrylic, pattern #12, .125" thick
A19156 Clear acrylic, pattern #19, .156" thick (LED pixelation will be visible)
AF19156 Frosted acrylic, pattern #19, .156" thick

OPTIONS
EM/10W Emergency LED battery (not available with 2'x2' fixtures)
EM/10W/BMTD Back-mounted 10-watt emergency LED battery, nominal, increases fixture height (required for 2'x2' fixtures). See back for details.
(L__) Additional lower lumen packages available. Specify in increments of 100 nominal lumens. Option must be specified with next *higher* lumen package.
Example: 7,500 nominal lumens = LPT-24-L81/8TW-SAF12095-(L75)
EQCLIPS Earthquake clips (4 per fixture)
CP Chicago Plenum (CCEA)

CONTROL
 See page 2 for details.
DALI Driver prewired for DALI applications
DIM (1) 0-10V signal to control dimming
 (1) 0-10V signal to control CCT
DMX Driver prewired for DMX applications

VOLTAGE
120 120V
277 277V
UNV 120-277V

FEATURES

- ▶ Tunable white from 3000K to 5000K CCT, minimum 80 CRI.
- ▶ 3-7/16" deep housing installs easily within limited plenum space.
- ▶ Efficacies up to 129 lm/W.
- ▶ Gasketed door frame features offset mitered corners to eliminate light leaks.
- ▶ Cam latches close securely and allow hassle-free maintenance.
- ▶ Reversible door hinges and latches allow access on either side.
- ▶ Deep reinforcement ribs provide added strength.
- ▶ Integral T-bar clips quickly secure fixture to structure.
- ▶ This fixture is proudly made in the USA.



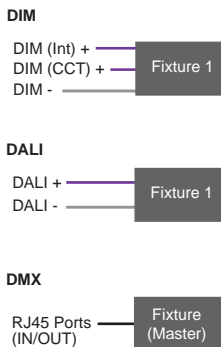
SPECIFICATIONS

Housing – 22-gauge die-formed C.R.S.
Door Frame – 22-gauge C.R.S., offset mitered corners, cam latches, and T-style hinges.
Shielding – Frosted acrylic, pattern #12, .095" thick.
Finish – 92% minimum average reflective white polyester powder coat bonded to phosphate-free, multi-stage pretreated metal. All parts painted after fabrication to facilitate installation, increase efficiency, and inhibit corrosion.
Electrical – High quality mid-power LED board. L70 > 50,000 hours per IES TM-21. Tunable White products use LEDs of multiple CCTs and may produce a perceptibly different shade of white from single-CCT products at the same CCT. All CCTs are within 3 MacAdam ellipses.
Mounting – NEMA Type "G" standard. For flange installations use the Drywall Kit (DFK), ordered separately, see Information section.
Labels –
 • cCSAus certified as luminaire suitable for dry or damp locations.
 • City of Chicago Environmental Air approved when specified with CP option.
Warranty – 5-year limited warranty, see hew.com/warranty.

IMPORTANT:

Electrostatic sensitive unit. Observe precautions when handling.

CONTROL DETAILS



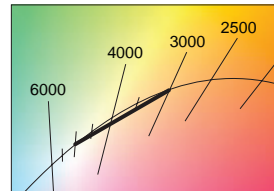
FIXTURE PERFORMANCE DATA

LED PACKAGE	DELIVERED LUMENS	WATTAGE	EFFICACY (lm/W)
2x2			
L45	4588	40.8	112.5
2x4			
L45	4504	34.8	129.5
L81	8178	63.1	129.7

- Photometrics tested in accordance with IESNA LM-79. Results shown are based on 25°C ambient temperature.
- Wattage shown is average for 120V through 277V input.
- Results based on 4000K, 80 CRI, actual lumens may vary +/-5%
- Use multiplier table to calculate additional options.

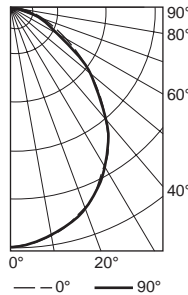
MULTIPLIER TABLE

CCT	CONVERSION FACTOR	
	LUMENS	WATTAGE
3000K	0.95	1.04
3500K	0.98	1.02
4000K	1.00	1.00
5000K	0.96	1.04



PHOTOMETRY

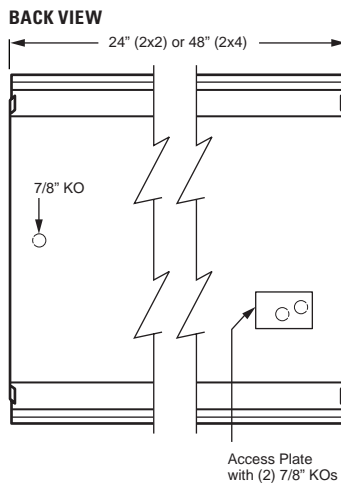
LPT-24-L81/8TW-SAF12095-DALI Total Luminaire Output: 8178 lumens; 63.1 Watts | Efficacy: 130 lm/W | 82 CRI; 3457K CCT



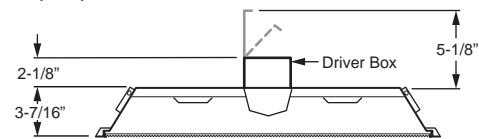
VERTICAL ANGLE	HORIZONTAL ANGLE			ZONAL LUMENS
	0°	45°	90°	
0	3694	3694	3694	
5	3696	3694	3694	350
15	3503	3503	3507	989
25	3128	3128	3144	1443
35	2637	2635	2643	1632
45	1976	1952	1928	1487
55	1237	1170	1118	1065
65	713	649	653	670
75	361	340	385	389
85	137	143	169	153
90	0	0	0	

LUMEN SUMMARY	ZONE	LUMENS	% FIXTURE
	0 - 30	2782	34
	0 - 40	4414	54
	0 - 60	6966	85
	0 - 90	8178	100
	0 - 180	8178	100

FIXTURE DETAILS



EM/10W/BMTD DETAILS



2x2 configurations will require EM driver to be back mounted. Additional plenum depth is required for installation and servicing. Not available with NEMA Type "F" applications. Access required through adjacent tile in grid system.