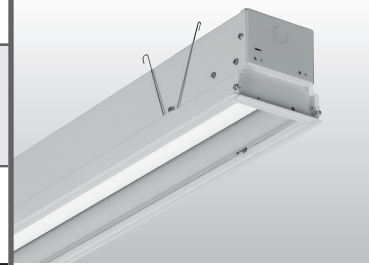


# ASYMMETRIC MEDICAL BED LIGHT

# MD2

tunable **WHITE**

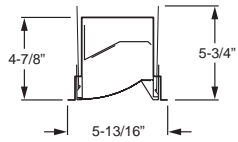


CATALOG #:	TYPE:
PROJECT:	NOTES:

**EXAMPLE** **MD2 G - 4 - L30/8TW - A - OPTIONS - DALI - UNV**

SERIES    CEILING TYPE    NOMINAL LENGTH    LUMEN PACKAGE    CRI & CCT    SHIELDING    OPTIONS/ACCESSORIES    CONTROL    VOLTAGE

## CROSS SECTION



## ORDERING INFORMATION

**SERIES**  
**MD2** Asymmetric Medical Bed Light – Tunable White

**CEILING TYPE**  
 When using in NEMA Type “SS” or “NFG” applications, must specify EQCLIPS option. For flange installations use the Drywall Kit (DFK), see Accessories. Fixture must be installed prior to Drywall Kit (DFK).  
**G** NEMA Type “G”, “SS”, and “NFG”

**NOMINAL LENGTH**  
 4                      4'

**LED PACKAGE**

Example: L30/8TW		
LUMEN PACKAGE	NOMINAL LUMENS <sup>1</sup>	WATTAGE
L30	3,000	32

Nominal lumen output based on 4000K CCT. Actual lumens may vary +/-5%, see fixture performance data.  
<sup>1</sup> Nominal lumens based on curved frosted ribbed acrylic (A or A/TP) shielding. Other shielding options may reduce lumen output.

**CRI & CCT**  
**8TW** Tunable white (80 CRI, 3000K–5000K)

**SHIELDING**  
**A** Curved frosted ribbed acrylic  
**A/CHA118** Curved frosted ribbed acrylic with clear, high temperature non-prismatic lens.  
**A/PC118** Curved frosted ribbed acrylic with clear polycarbonate lens.

**OPTIONS**  
**GLR** Fuse, fast blow (specify voltage), requires one per driver  
**EM/10W** 10-watt emergency driver (120-277V only)  
**EQCLIPS** Earthquake clips (2 per fixture)  
**LVC1** 1-circuit low-voltage controller, wired for Ambient (120V or 277V only, not dimming compatible. Color tuning performed by alternate 0-10V control source.)  
**LVC3DIM** 1-circuit dimming low-voltage controller (120V or 277V only; DIM only, bedside switch used to control dimming only, color tuning performed by alternate 0-10V control source.)  
**SG** Single gasket (fixture to grid)

**ACCESSORIES** (Must be ordered separately)  
 Fixture must be installed prior to Drywall Kit (DFK).  
**DFK-0648AMW** Drywall kit, 6" x 48", anti-microbial white

**CONTROL**  
 See page 3 for details.  
**DALI** Driver prewired for DALI applications  
**DIM** (1) 0-10V signal to control dimming  
 (1) 0-10V signal to control CCT  
**DMX** Driver prewired for DMX applications

**VOLTAGE**  
**120** 120V  
**277** 277V  
**UNV** 120-277V

## FEATURES

- ▶ Tunable white from 3000K to 5000K CCT, minimum 80 CRI.
- ▶ Designed for use in pairs to asymmetrically illuminate patient beds.
- ▶ Fixtures can be installed to allow maintenance access without working directly over patient beds.
- ▶ Provides varying levels of illumination through dimming driver.
- ▶ Optional low-voltage controller allows for bedside lighting control.
- ▶ Anti-microbial white finish standard.
- ▶ This fixture is proudly made in the USA.



# MD2

tunable **WHITE**

## ASYMMETRIC MEDICAL BED LIGHT

### SPECIFICATIONS

**Housing** – 22-gauge die-formed C.R.S.

**Door Frame** – Steel door frame with integral torsion springs to secure the frame within the fixture.

**Shielding** – Frosted, ribbed acrylic.

**Finish** – Textured 92% minimum average reflective white anti-microbial powder coating bonded to phosphate-free, multi-stage pretreated metal. All parts painted after fabrication to facilitate installation, increase efficiency, and inhibit corrosion.

**Electrical** – High quality mid-power LED board. L70 > 50,000 hours per IES TM-21. Tunable White products use LEDs of multiple CCTs and may produce a perceptibly different shade of white from single-CCT products at the same CCT. All CCTs are within 3 MacAdam ellipses.

**Mounting** – NEMA Type “G” standard. For flange installations use the Drywall Kit (DFK), ordered separately. Fixture must be installed prior to Drywall Kit (DFK). Accommodates “NFG” and “SS” without modification (earthquake clips required).

**Labels** – cETLus conforms to UL STD 1598 and UL STD 8750. Certified to CAN/CSA STD C22.2 No. 250.0. Suitable for damp locations.

**Warranty** – 5-year limited warranty, see [hew.com/warranty](http://hew.com/warranty).

### IMPORTANT:

Electrostatic sensitive unit. Observe precautions when handling.

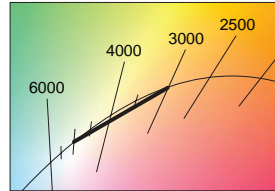
### FIXTURE PERFORMANCE DATA

LED PACKAGE	DELIVERED LUMENS	WATTAGE	EFFICACY (LM/W)
L30	3007	32.2	93.4

- Photometrics tested in accordance with IESNA LM-79. Results shown are based on 25°C ambient temperature.
- Wattage shown is average for 120V through 277V input.
- Results based on 4000K, 80 CRI, actual lumens may vary +/-5%
- Use multiplier table to calculate additional options.

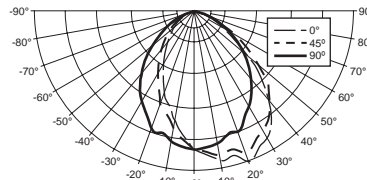
### MULTIPLIER TABLE

CCT	CONVERSION FACTOR	
	LUMENS	WATTAGE
3000K	0.95	1.04
3500K	0.98	1.02
4000K	1.00	1.00
5000K	0.96	1.04



### PHOTOMETRY

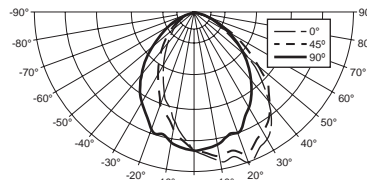
**MD2G-4-L30/8TW-A-DALI** Total Luminaire Output: 3007 lumens; 32.2 Watts | Efficacy: 93 lm/W



Vertical Angle	Horizontal Angle					Zonal Lumens
	0°	45°	90°	135°	180°	
0	1421	1421	1421	1421	1421	
5	1492	1456	1388	1329	1293	132
15	1534	1467	1292	1103	1016	369
25	1535	1450	1182	880	758	540
35	1351	1316	998	658	542	606
45	944	1049	758	449	359	554
55	493	654	503	285	222	408
65	230	341	306	164	133	250
75	98	132	143	72	64	118
85	21	30	35	17	14	30
90	0	0	0	0	0	

LUMEN SUMMARY	Zone	Lumens	% Fixture
	0 - 30	1041	35
	0 - 40	1648	55
	0 - 60	2609	87
	0 - 90	3007	100
0-180	3007	100	

**MD2G-4-L30/8TW-CHA118-DALI** Total Luminaire Output: 2796 lumens; 32.2 Watts | Efficacy: 87 lm/W



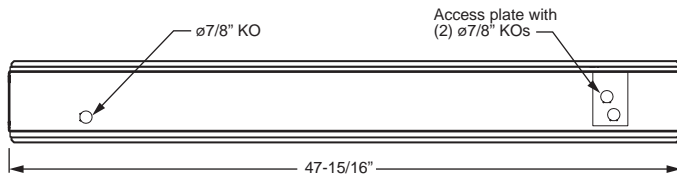
Vertical Angle	Horizontal Angle					Zonal Lumens
	0°	45°	90°	135°	180°	
0	1335	1335	1335	1335	1335	
5	1401	1368	1309	1254	1226	125
15	1437	1377	1218	1048	968	348
25	1442	1361	1118	849	740	512
35	1273	1235	945	642	537	577
45	894	982	720	445	366	529
55	455	599	469	283	227	382
65	193	289	271	153	127	220
75	64	91	105	56	49	87
85	10	13	14	10	10	16
90	0	0	0	0	0	

LUMEN SUMMARY	Zone	Lumens	% Fixture
	0 - 30	985	35
	0 - 40	1562	56
	0 - 60	2473	88
	0 - 90	2796	100
0-180	2796	100	



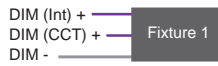
## FIXTURE DETAILS

### BACK VIEW



## CONTROL DETAILS

### DIM



### DALI



### DMX

