

ARCHITECTURAL WALL MOUNT UP/DOWN

WMAUD

tunable **WHITE**

CATALOG #:

TYPE:

PROJECT:

NOTES:

EXAMPLE

WMAUD - 4 - L32U / L32D / 8TW - AF - OPTIONS - DALI - UNV

SERIES

NOMINAL LENGTH

LUMENS UPLIGHT

LUMENS DOWNLIGHT

CRI & CCT

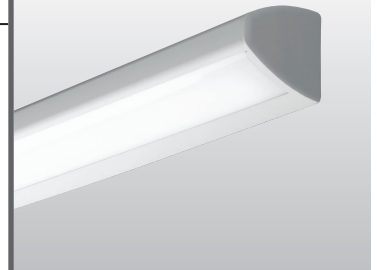
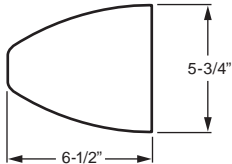
SHIELDING

OPTIONS

CONTROL

VOLTAGE

CROSS SECTION



ORDERING INFORMATION

SERIES

WMAUD Architectural Wall Mount Up/Down – Tunable White

NOMINAL LENGTH

2	2'
3	3'
4	4'

LED PACKAGE

EXAMPLE: L32U/L32D/8TW			
LUMEN PACKAGE	NOMINAL LUMENS	UP OR DOWN	TOTAL WATTAGE
2'	L15	U OR D	17
3'	L23		25
4'	L32		33

Nominal lumen output based on 4000K CCT. Actual lumens may vary +/-5%, see fixture performance data. Additional LED lumen packages available, see options.

CRI & CCT

8TW Tunable white (80 CRI, 3000K–5000K)

SHIELDING

AF Frosted acrylic, .125" thick

OPTIONS

Low-voltage controllers available. See page 3 for details.

For color options, visit the WMAUD online at hew.com.

PSBR/120 Single-circuit bottom-mounted pull switch on right (operates downlight, 120V only)

PSBL/120 Single-circuit bottom-mounted pull switch on left (operates downlight, 120V only)

PS2BR/120 Two-circuit, 4-position bottom-mounted pull switch on right (120V only)

PS2BL/120 Two-circuit, 4-position bottom-mounted pull switch on left (120V only)

GCOL Grounded convenience outlet on left (120V only)

GCOR Grounded convenience outlet on right (120V only)

TP Tamper-resistant (holt head) screws. This option requires a tamper-resistant tool (must be ordered separately). Please specify quantity required per project.

EM/10W 10-watt emergency driver (120V-277V only)

AMW Anti-microbial white finish

OCC__ Factory-installed occupancy sensor, 120V or 277V only, must specify voltage. LVC and OCC options cannot be used simultaneously on 2' and 3' units. Occupancy sensor operates the down light: OCCWS FS-505-PP-__

CONTROL

See page 3 for details.

DALI Driver prewired for DALI applications

DIM (1) 0-10V signal to control dimming
(1) 0-10V signal to control CCT

DMX Driver prewired for DMX applications

VOLTAGE

120	120V
277	277V
UNV	120-277V

FEATURES

- ▶ Tunable white from 3000K to 5000K CCT, minimum 80 CRI.
- ▶ Contoured architectural housing with die-cast aluminum end caps.
- ▶ Toolless access to LEDs by removing front housing from fixture channel.
- ▶ Pull switch and grounded convenience outlet options available (120V only).
- ▶ Various housing color options available, consult factory.
- ▶ Optional anti-microbial white finish available for use in healthcare applications.
- ▶ Keyhole mounting for easy installation.
- ▶ Optional tamper-resistant screws available.
- ▶ This fixture is proudly made in the USA.



SPECIFICATIONS

Housing – 20-gauge C.R.S. fixture channel. Front housing constructed of marine grade extruded aluminum with die-cast aluminum end caps.

Reflective Surfaces – 92% minimum average reflective white polyester powder coat on interior steel components.

Shielding – Frosted acrylic, .125" thick.

Finish – Textured matte white polyester TGIC powder coat bonded to phosphate-free, multi-stage pretreated metal. All parts painted after fabrication to facilitate installation, increase efficiency, and inhibit corrosion.

Electrical – High quality mid-power LED board. L70 > 50,000 hours per IES TM-21. Tunable White products use LEDs of multiple CCTs and may produce a perceptibly different shade of white from single-CCT products at the same CCT. All CCTs are within 3 MacAdam ellipses.

Mounting – Wall.

Labels – cETLus conforms to UL STD 1598 and UL STD 8750. Certified to CAN/CSA STD C22.2 No. 250.0. Suitable for damp locations.

Warranty – 5-year limited warranty, see hew.com/warranty.

IMPORTANT:

Electrostatic sensitive unit. Observe precautions when handling.

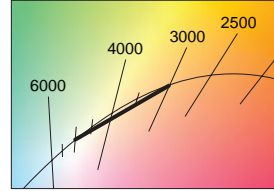
FIXTURE PERFORMANCE DATA

LED PACKAGE	TOTAL DELIVERED LUMENS	TOTAL WATTAGE	TOTAL EFFICACY (LM/W)
2'			
L15	3118	34.6	90.0
3'			
L23	4764	49.8	95.7
4'			
L32	6478	66.8	96.9

- Photometrics tested in accordance with IESNA LM-79. Results shown are based on 25°C ambient temperature.
- Wattage shown is average for 120V through 277V input.
- Results based on 4000K, 80 CRI, actual lumens may vary +/-5%
- Performance is the same for Up and Downlight.
- Use multiplier table to calculate additional options.

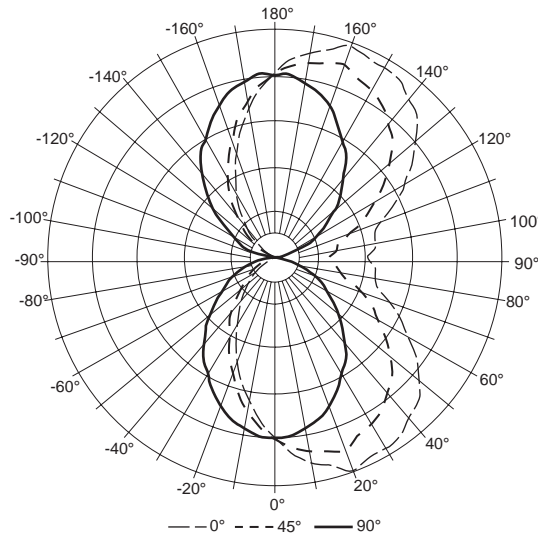
MULTIPLIER TABLE

CCT	CONVERSION FACTOR	
	LUMENS	WATTAGE
3000K	0.95	1.04
3500K	0.98	1.02
4000K	1.00	1.00
5000K	0.96	1.04



PHOTOMETRY

WMAUD-4-L32U/L32D/8TW-AF-DALI Report #: 17320.0; 05/06/13
 Total Luminaire Output: 6478 lumens 66.8 Watts; Efficacy: 97.0 lm/W; 84.2 CRI; 4025K CCT



Vertical Angle	Horizontal Angle					Zonal Lumens
	0°	45°	90°	135°	180°	
0	1160	1160	1160	1160	1160	
5	1267	1226	1153	1099	1064	110
15	1377	1283	1077	908	834	309
25	1420	1267	947	693	595	452
35	1403	1203	802	507	403	529
45	1307	1071	616	319	226	532
55	1099	865	441	175	100	467
65	886	671	289	67	18	366
75	677	450	144	5	9	259
85	652	392	33	17	33	213
90	595	359	0	31	46	
95	648	395	35	24	39	215
105	673	456	146	5	9	259
115	880	675	290	64	16	366
125	1090	871	449	178	100	468
135	1290	1071	621	319	226	532
145	1391	1203	816	510	406	531
155	1409	1265	959	696	598	452
165	1373	1284	1093	910	838	309
175	1265	1228	1172	1105	1071	110
180	1163	1163	1163	1163	1163	

LUMEN SUMMARY	Zone	Lumens	% Fixture
	0 - 30	870	13
	0 - 40	1399	22
	0 - 60	2399	37
	0 - 90	3237	50
	90 - 120	839	13
	90 - 150	2370	37
	90 - 180	3242	50
0 - 180	6478	100	

LOW-VOLTAGE CONTROLLER (DIM only, 120V or 277V only)

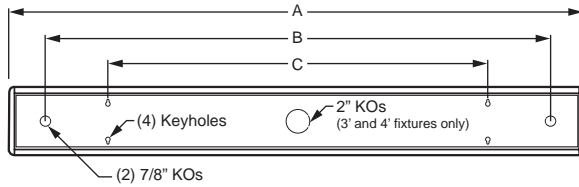
Bedside switch used to control dimming only, color tuning performed by alternate 0-10V control source.

EXAMPLE: LVC2U/D		
Controller	Load 1	Load 2
LVC1 = 1-circuit	U = Up D = Down	
LVC2 = 2-circuit	U/ = Up	D = Down
LVC3 = dimming control	DIMU/ = Uplight, 0-10 dimming ¹ DIMD/ = Downlight, 0-10 dimming ¹	U = Up D = Down

¹ Smooth dimming of the load utilizing a single, dry contact, momentary, normally open switch which will dim from 25% up to 100% while holding down the switch.

FIXTURE DETAILS

BACK VIEW



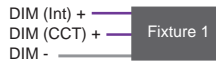
NOMINAL LENGTH	DIMENSIONS		
	A	B	C
2' Unit	25-1/8" O.C.	20-1/2" O.C.	16" O.C.
3' Unit	37-1/8" O.C.	32-1/2" O.C.	32" O.C.
4' Unit	49-1/8" O.C.	42-1/2" O.C.	32" O.C.

OCCUPANCY SENSOR



CONTROL DETAILS

DIM



DALI



DMX

