

# DESIGNERLINE LOW-PROFILE WALL MOUNT COVE

# LPC

tunable **COLOR**

CATALOG #:

TYPE:

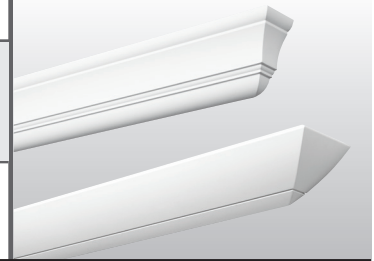
PROJECT:

NOTES:

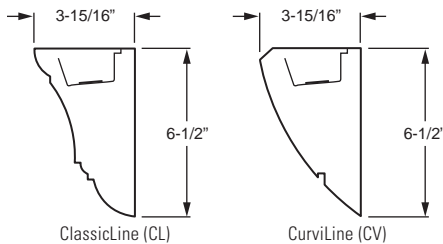
EXAMPLE

**LPC CL - 4 - L40/9TC - F / F - OPTIONS - DALI - 120**

SERIES STYLE NOMINAL LENGTH LUMEN PACKAGE COLOR FIX. TYPE END CAP OPTIONS/ACCESSORIES CONTROL VOLTAGE



## CROSS SECTIONS



## FEATURES

- ▶ Tunable color from 1650K to 8000K CCT, minimum 90 CRI.
- ▶ Combines the look of continuous crown molding with big fixture performance in a compact, ADA compliant, architecturally styled package
- ▶ Common applications include smaller offices, corridors, healthcare facilities, and spaces with low to moderate ceiling heights
- ▶ Provides indirect illumination in locations where it is important to avoid typical glare
- ▶ DesignerLine Low-Profile Cove is part of an extensive system of matched products including various cove and valance fixtures
- ▶ Heavy-duty hook-on mounting brackets make it easy to securely install and level fixtures
- ▶ Joiner and alignment system permit mounting in continuous rows with hairline seams that virtually disappear
- ▶ Optional anti-microbial white finish available for use in healthcare applications
- ▶ This fixture is proudly made in the USA

## ORDERING INFORMATION

### SERIES

**LPC** DesignerLine Low-Profile Cove – Tunable Color

### STYLE

**CL** Classic  
**CV** CurviLine

### NOMINAL LENGTH

**4** 4'  
**8** 8'

### LED PACKAGE

EXAMPLE: L40/9TC		
LUMEN PACKAGE	NOMINAL LUMENS	WATTAGE
4'		
<b>L40</b>	4,000	56
8'		
<b>L80</b>	8,000	112

Nominal lumen output based on 4000 CCT. Actual lumens may vary +/-5%, see fixture performance data.

### COLOR

**9TC** Tunable color (90 CRI, 1650K–8000K and color)

### FIXTURE TYPE

**F** Electrical feeder unit, quick-connect wiring harness, left end cap installed  
**J** Joiner unit, quick-connect wiring harness, no end caps  
**E** End unit, quick-connect wiring harness, right end cap installed  
**S** Stand-alone unit, two end caps installed

### END CAP STYLE

**F** Flat ends  
**M** Mitered ends (increases overall length, see back for details)

### OPTIONS

**GLR** Fuse, fast blow (specify voltage), one per driver  
**AMW** Anti-microbial white finish

### CONTROL

See page 3 for details.  
**BTL** Bluetooth LE enabled  
**DALI** DALI Type 8 enabled  
**DIM** (1) 0-10V signal to control dimming  
(1) 0-10V signal to control CCT (will only control white light CCT range, will not have pure color output)  
**DMX** DMX enabled  
**LUT** Lutron Ecosystem enabled  
**WS** Wattstopper DLM enabled

### VOLTAGE

**120** 120V  
**277** 277V



### SPECIFICATIONS

**Housing/Reflector** – Seam-welded extruded aluminum.

**Weight** – 5 lbs. per foot

**End Caps** – Aluminum, welded, seam-filled and finished at ends of individual units and rows.

**Reflective Surfaces** – 92% minimum average reflective white polyester powder coat on interior components.

**Shielding** – Frosted acrylic, .125" thick.

**Finish** – Textured matte white polyester TGIC powder coat bonded to phosphate-free, multi-stage pretreated metal. All parts painted after fabrication to facilitate installation, increase efficiency, and inhibit corrosion.

**Electrical** – Five color, mid-power LED modules. On board thermal and optical feedback ensure color consistency of <2 step MacAdam ellipse (SDCM) and L70>50,000 hours. In-line spectral capture and storage results in consistent CRI and CCT across all arrays.

**Mounting** – Wall mount, individual units or continuous rows.

**Labels** – cCSAus certified as luminaire suitable for dry or damp locations.

**Warranty** – 5-year limited warranty, see hew.com/warranty.

### IMPORTANT:

Electrostatic sensitive unit. Observe precautions when handling.

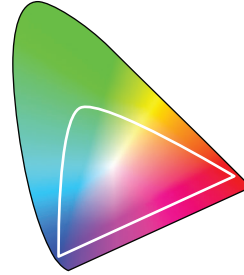
### FIXTURE PERFORMANCE DATA

	COLOR	DELIVERED LUMENS	POWER (W)	EFFICACY (lm/W)
4'	4000	3913	55.8	70.1
	Red	599	15.2	39.4
	Blue	363	24.5	14.8
	Green	2916	30.3	96.2
8'	8000	7826	111.6	70.1
	Red	1198	30.4	39.4
	Blue	726	49.0	14.8
	Green	5832	60.6	96.2

- Photometrics tested in accordance with IESNA LM-79. Results shown are based on 25°C ambient temperature.
- Wattage shown is average for 120V through 277V input.
- Results based on 4000K, 90 CRI, actual lumens may vary +/-5%
- Use multiplier table to calculate additional options.

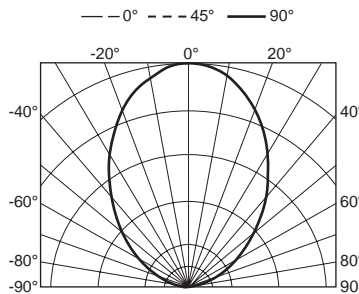
### MULTIPLIER TABLE

COLOR	CONVERSION FACTOR	
	LUMENS	WATTAGE
2000K	0.58	0.58
2700K	0.85	0.83
3000K	0.96	0.94
3500K	0.98	0.97
4000K	1.00	1.00
5000K	0.99	0.99
6000K	0.99	0.99
8000K	0.99	0.99



### PHOTOMETRY

LPCC-4-L40/9TC-DALI Total Luminaire Output: 3913 lumens; 55.8 Watts | Efficacy: 70 lm/W

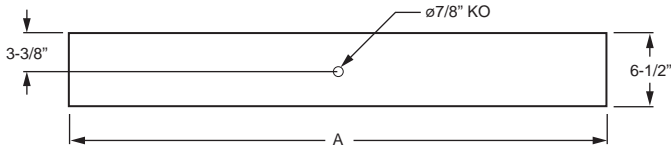


CANDLEPOWER DISTRIBUTION	Vertical Angle	Horizontal Angle					Zonal Lumens
		0°	45°	90°	135°	180°	
	90	3	4	12	7	10	71
95	33	51	94	55	42	71	
105	186	219	233	193	157	220	
115	377	400	423	378	317	386	
125	593	628	659	601	544	552	
135	854	894	924	858	788	676	
145	1145	1177	1199	1138	1076	723	
155	1417	1436	1446	1409	1358	654	
165	1645	1648	1655	1638	1623	461	
175	1759	1756	1770	1756	1762	166	
180	1779	1779	1779	1779	1779		

LUMEN SUMMARY	Zone	Lumens	% Fixture
	90 - 120	677	17
	90 - 150	2628	67
	90 - 180	3909	100
0 - 180	3913	100	

## FIXTURE DETAILS

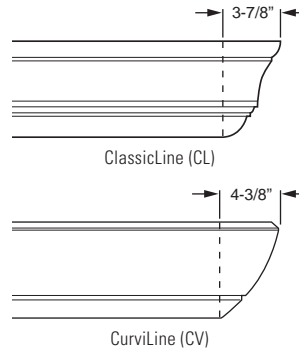
### BACK VIEW



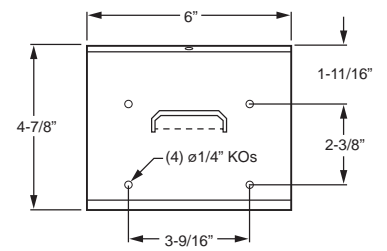
NOMINAL LENGTH	ACTUAL LENGTH (A)
4'	46-3/16"
8'	92-1/8"

**Note:** Mitered ends add to overall length, see details at right.

### MITERED END DETAILS



### WALL MOUNT BRACKET



### FIXTURE TYPE DETAILS (ClassicLine shown)

	F	J	E	S
Mitered				
Flat				

## CONTROL DETAILS

### DIM



### DALI



### Lutron Ecosystem



### Wattstopper DLM



### DMX

