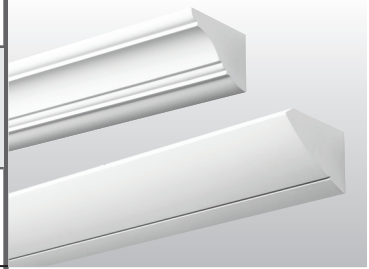


DESIGNERLINE SMALL WALL MOUNT COVE

SMC

tunable **COLOR**

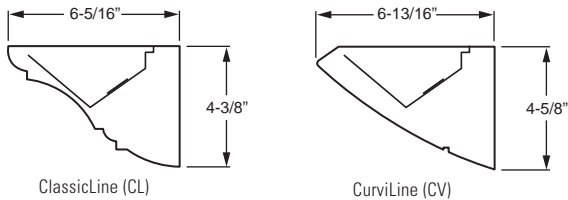


CATALOG #:	TYPE:
PROJECT:	NOTES:

EXAMPLE **SMC** **CL** - **4** - **L40/9TC** - **F / F** - **OPTIONS** - **DALI** - **120**

SERIES STYLE NOMINAL LENGTH LUMEN PACKAGE COLOR FIX. END TYPE CAP OPTIONS/ACCESSORIES CONTROL VOLTAGE

CROSS SECTIONS



ORDERING INFORMATION

SERIES
SMC DesignerLine Small Wall Mount Cove – Tunable Color

STYLE
CL Classic
CV CurviLine

NOMINAL LENGTH
4 4'
8 8'

LED PACKAGE

EXAMPLE: L40/9TC		
LUMEN PACKAGE	NOMINAL LUMENS	WATTAGE
	4'	
L40	4,000	56
	8'	
L80	8,000	112

Nominal lumen output based on 4000 CCT. Actual lumens may vary +/-5%, see fixture performance data.

COLOR
9TC Tunable color (90 CRI, 1650K–8000K and color)

FIXTURE TYPE
F Electrical feeder unit, quick-connect wiring harness, left end cap installed
J Joiner unit, quick-connect wiring harness, no end caps
E End unit, quick-connect wiring harness, right end cap installed
S Stand-alone unit, two end caps installed

END CAP STYLE
F Flat ends
M Mitered ends (increases overall length, see back for details)

OPTIONS
GLR Fuse, fast blow (specify voltage), one per driver
AMW Anti-microbial white finish

CONTROL
 See page 3 for details.
BTL Bluetooth LE enabled
DALI DALI Type 8 enabled
DIM (1) 0-10V signal to control dimming
 (1) 0-10V signal to control CCT
 (will only control white light CCT range, will not have pure color output)
DMX DMX enabled
LUT Lutron Ecosystem enabled
WS Wattstopper DLM enabled

VOLTAGE
120 120V
277 277V

FEATURES

- ▶ Tunable color from 1650K to 8000K CCT, minimum 90 CRI.
- ▶ Architecturally styled cove creates a comfortable, low glare environment without cluttering the ceiling surface
- ▶ Quality workmanship and attention to detail encompasses this small scale indirect luminaire designed to perform well in spaces with low to moderate ceiling heights
- ▶ Common applications include smaller offices, corridors, healthcare facilities and areas where it is important to avoid typical glare
- ▶ The DesignerLine Small Cove is part of an extensive system of matched products
- ▶ Heavy-duty hook-on mounting brackets make it easy to securely install and level fixtures
- ▶ Joiner and alignment system permit mounting in continuous rows with hairline seams that virtually disappear
- ▶ Optional anti-microbial white finish available for use in healthcare applications
- ▶ This fixture is proudly made in the USA

SPECIFICATIONS

Housing/Reflector – Seam-welded extruded aluminum.

Weight – 5 lbs. per foot

End Caps – Aluminum, welded, seam-filled and finished at ends of individual units and rows.

Reflective Surfaces – 92% minimum average reflective white polyester powder coat on interior components.

Shielding – Frosted acrylic, .125" thick.

Finish – Textured matte white polyester TGIC powder coat bonded to phosphate-free, multi-stage pretreated metal. All parts painted after fabrication to facilitate installation, increase efficiency, and inhibit corrosion.

Electrical – Five color, mid-power LED modules. On board thermal and optical feedback ensure color consistency of <2 step MacAdam ellipse (SDCM) and L70>50,000 hours. In-line spectral capture and storage results in consistent CRI and CCT across all arrays.

Mounting – Wall mount, individual units or continuous rows.

Labels – cCSAus certified as luminaire suitable for dry or damp locations.

Warranty – 5-year limited warranty, see hew.com/warranty.

IMPORTANT:

Electrostatic sensitive unit. Observe precautions when handling.

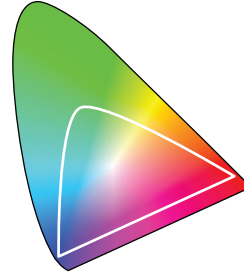
FIXTURE PERFORMANCE DATA

	COLOR	DELIVERED LUMENS	POWER (W)	EFFICACY (lm/W)
4'	4000	4157	55.8	74.5
	Red	637	15.2	41.9
	Blue	386	24.5	15.8
	Green	3098	30.3	102.3
8'	8000	8315	111.6	74.5
	Red	1273	30.4	41.9
	Blue	772	49.0	15.8
	Green	6197	60.6	102.3

- Photometrics tested in accordance with IESNA LM-79. Results shown are based on 25°C ambient temperature.
- Wattage shown is average for 120V through 277V input.
- Results based on 4000K, 90 CRI, actual lumens may vary +/-5%
- Use multiplier table to calculate additional options.

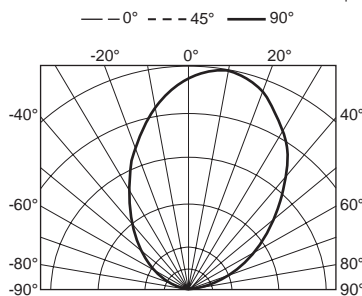
MULTIPLIER TABLE

COLOR	CONVERSION FACTOR	
	LUMENS	WATTAGE
2000K	0.58	0.58
2700K	0.85	0.83
3000K	0.96	0.94
3500K	0.98	0.97
4000K	1.00	1.00
5000K	0.99	0.99
6000K	0.99	0.99
8000K	0.99	0.99



PHOTOMETRY

SMCCL-4-L40/9TC-DALI Total Luminaire Output: 4157 lumens; 55.8 Watts | Efficacy: 75 lm/W

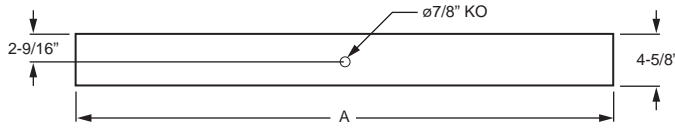


Vertical Angle	Horizontal Angle					Zonal Lumens
	0°	45°	90°	135°	180°	
90	4	5	15	5	6	
95	81	93	102	74	64	93
105	278	280	252	189	164	253
115	518	513	449	334	286	424
125	810	796	695	520	451	593
135	1146	1118	963	739	657	719
145	1470	1421	1244	1001	899	757
155	1711	1666	1487	1263	1170	675
165	1879	1822	1676	1534	1472	471
175	1880	1846	1800	1720	1725	170
180	1815	1815	1815	1815	1815	

LUMEN SUMMARY	Zone	Lumens	% Fixture
	90 - 120	770	19
	90 - 150	2839	68
	90 - 180	4155	100
0 - 180	4157	100	

FIXTURE DETAILS

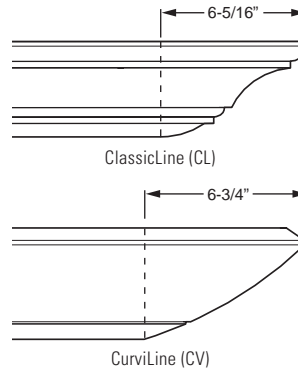
BACK VIEW



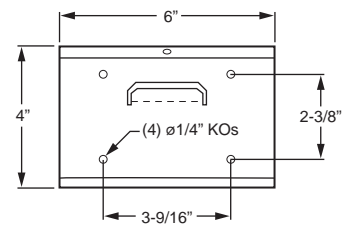
NOMINAL LENGTH	ACTUAL LENGTH (A)
4'	46-3/16"
8'	92-1/8"

Note: Mitered ends add to overall length, see details at right.

MITERED END DETAILS



WALL MOUNT BRACKET



FIXTURE TYPE DETAILS (ClassicLine shown)

	F	J	E	S
Mitered				
Flat				

CONTROL DETAILS

DIM



DALI



Lutron Ecosystem



Wattstopper DLM



DMX

