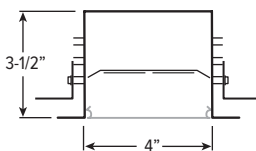


MX4RW LED

4" Continuous – Recessed Shallow Wall or Hard Surface



CATALOG #: _____

TYPE: _____

PROJECT: _____

FEATURES

- Create elegant spaces with a seamless, continuous row of illumination
- Designed for 3-1/2" shallow drywall or hard surface frames
- Flat and regressed lenses give designers a variety of looks
- Maximize energy savings with efficacies as high as 121 lm/W
- Versatile MX4 system includes recessed, surface, suspended and in-wall mounting, see hew.com
- Diffuse acrylic lens provides uniform illumination for visual comfort
- Made Right Here™ in the USA

SPECIFICATIONS

- HOUSING – Extruded aluminum.
- SHIELDING – Extruded, flat, diffuse acrylic lens.
- FINISH – 92% minimum average reflective white polyester powder coat bonded to phosphate-free, multi-stage pretreated metal. All parts painted after fabrication to facilitate installation, increase efficiency, and inhibit corrosion.
- ELECTRICAL – High quality mid-power LED boards. L70 >60,000 hours per IES TM-21.
- MOUNTING – Drywall mount allowing for materials 1/4" - 2" thick. Fixture to be installed prior to drywall or finished hard surface material.
- LISTINGS – cETLus conforms to UL STD 1598. Certified to CAN/CSA STD C22.2 No. 250.0. Suitable for damp locations.
- WARRANTY – 5-year limited warranty, see hew.com/warranty.

ORDERING EXAMPLE: MX4RWTR - 8'00 - L8/835 - F - OPTIONS - DIM - UNV

SERIES	FIXTURE STYLE	LENGTH	LUMENS ^[1]	CRI	CCT
MX4RW	TR Drywall or Hard Surface - Trim	Lengths specified in feet and inches using 4" increments, 2' minimum.	L8 800lm	8 80	27 2700K
	TL Drywall or Hard Surface - Trimless	Example: 8'0 = 8'-0"	L12 1200lm	9 90	30 3000K
			L15 1500lm		35 3500K
PRODUCT BUILDER					40 4000K
Simplify ordering & layout design with the Williams Linear Product Builder at hew.com/product-builder					50 5000K

SHIELDING	OPTIONS ^[2]	DRIVER ^[3]	VOLTAGE
F Flat, diffuse acrylic	EM/10W 10-watt emergency battery ^[5]	DIM Dimming driver	120 120V
R Regressed diffuse acrylic ^[4]	EM/10WRM Remote mount 10-watt emergency battery ^[6]	DRV Non-dimming driver	277 277V
	V90 Vertical 90° corner, suspended ^[7]		UNV 120-277V
	V90R Vertical 90° corner, recessed ^[8]		347 347V ^[10]
	V90G Vertical 90° corner, grid ^[9]		

NOTES

- ¹ Lumens per foot output based on 3500 CCT and F shielding. Actual lumens per foot may vary +/-5%. See page 2 for FIXTURE PERFORMANCE DATA.
- ² See page 3 for FINISH OPTIONS. Custom colors available upon request.
- ³ See page 2 for ADDITIONAL DRIVER OPTIONS.
- ⁴ See page 3 for SHIELDING DETAILS. Not available with transition options.
- ⁵ L8 only; 120-277V only. Not available with 2' fixtures.
- ⁶ L12 and L15 only; 120-277V only. Must be remote mounted for fixtures less than 4'.
- ⁷ Connects MX4D to vertically mounted MX4RW. See page 3 for FIXTURE DETAILS. Ships separately.
- ⁸ Transitions MX4RT to vertically mounted MX4RW. See page 3 for FIXTURE DETAILS. Ships separately.
- ⁹ Connects MX4RG to vertically mounted MX4RW. See page 3 for FIXTURE DETAILS. Ships separately.
- ¹⁰ Not available with EM drivers.



MX4RW^{LED} 4" Continuous – Recessed Shallow Wall or Hard Surface

FIXTURE PERFORMANCE DATA

	PER FOOT		
	DELIVERED LUMENS	WATTAGE	EFFICACY (lm/W)
L8	874	7.3	120
L12	1289	10.9	120
L15	1601	13.7	121

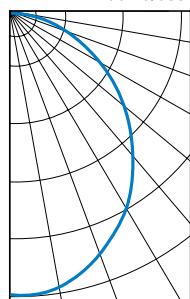
- Photometrics tested in accordance with IESNA LM-79. Results shown are based on 25°C ambient temperature.
- Wattage shown is average for 120V through 277V input.
- Results based on F shielding, 3500K, 80 CRI, actual lumens may vary +/-5%
- Use multiplier table to calculate additional options.

MULTIPLIER TABLE

	COLOR TEMPERATURE	
	CCT	CONVERSION FACTOR
80 CRI	2700K	0.97
	3000K	0.99
	3500K	1.00
	4000K	1.03
	5000K	1.06
90 CRI	2700K	0.82
	3000K	0.83
	3500K	0.84
	4000K	0.86
	5000K	0.90

PHOTOMETRY

MX4RWTR-4'00-L8/835-F-DIM Total Luminaire Output: 3496 lumens; 29.2 Watts | Efficacy: 120 lm/W | 80 CRI; 3500K CCT



VERTICAL ANGLE	HORIZONTAL ANGLE			ZONAL LUMENS
	0°	45°	90°	
0	1431	1431	1431	
5	1439	1413	1411	135
15	1373	1339	1331	379
25	1227	1207	1189	555
35	1053	1021	1003	643
45	844	826	792	634
55	634	596	586	540
65	394	380	368	378
75	180	178	180	191
85	28	28	28	41
90	2	0	0	

LUMEN SUMMARY	ZONE	LUMENS	% FIXTURE
	0 - 30	1069	31
0 - 40	1712	49	
0 - 60	2886	83	
0 - 90	3496	100	
0 - 180	3496	100	

ADDITIONAL DRIVER OPTIONS

Note: Lumen restrictions apply, consult product builder at hew.com/product-builder.

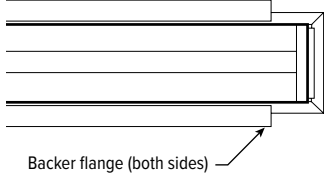
CATALOG NUMBER	DESCRIPTION
DRV	Driver prewired for non-dimming applications
DIM	Dimming driver prewired for 0-10V low voltage applications
DIM1	1% dimming driver prewired for 0-10V low voltage applications
DIM LINE	Line voltage dimming driver (Must specify 120V or 277V only)
SD40	40% step-dimming driver
SD50	50% step-dimming driver
DALI	DALI dimming driver
LTE LINE	Lutron Hi-lume® A-Series 1% dimming driver for forward phase line voltage controls (120V only)
LDE1	Lutron EcoSystem® H-Series 1% dimming driver for EcoSystem® controls
LDE5	Lutron EcoSystem® 5-Series 5% dimming driver for EcoSystem® controls
ELDO SOLOB	EldoLED Solodrive, 0.1% dimming driver for 0-10V controls
ELDO SOLOB DALI	EldoLED Solodrive, 0.1% dimming driver for DALI controls
ELDO ECO1	EldoLED Ecodrive, 1% dimming driver for 0-10V controls
ELDO ECO1 DALI	EldoLED Ecodrive, 1% dimming driver for DALI controls



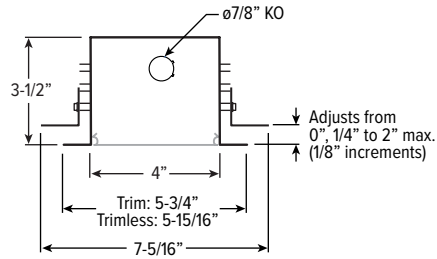
MX4RW LED 4" Continuous – Recessed Shallow Wall or Hard Surface

FIXTURE DETAILS

BACK VIEW

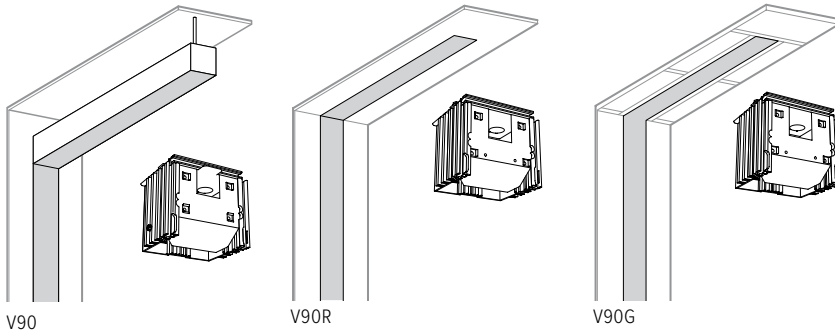


END VIEW



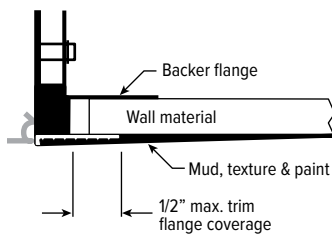
TRANSITION CORNERS

Includes tamper resistant lens bracket for lower end of vertical fixture.

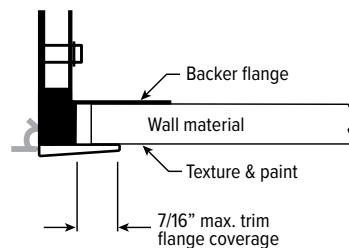


TRIM FINISH DETAILS

Trimless



Trim

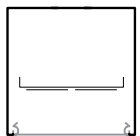


ROUGH-IN DIMENSIONS

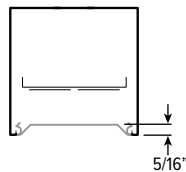
- Framing allowance for width is 5-3/4" \pm 1/4".
- Framing allowance for length is total length plus 1-1/2" minimum.

SHIELDING DETAILS

FLAT

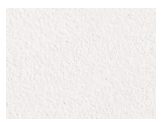


REGRESSED

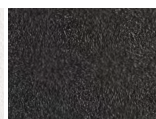


FINISH OPTIONS

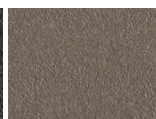
WHITE



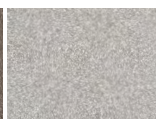
BLACK



BRONZE



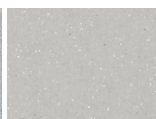
NICKEL



SILVER



ALUMINUM



For custom color, please specify RAL code or a manufacturer code with description. All custom colors other than RAL require two sample swatches, minimum 1" square.

