

CATALOG #: _____

TYPE: _____

PROJECT: _____

FEATURES

- Create elegant spaces with a seamless, continuous row of illumination
- Flat and proud lenses give designers a variety of looks
- Fixture attaches to wall bracket for simple installation
- Maximize energy savings with efficacies as high as 117 lm/W
- Linear extrusion contains snap-in light rails for ease of installation and maintenance
- Versatile MX4 system includes recessed, surface, suspended and in-wall mounting, see hew.com
- Diffuse acrylic lens provides uniform illumination for visual comfort
- Made Right Here™ in the USA

SPECIFICATIONS

- HOUSING – Extruded aluminum with die-cast end plates.
- SHIELDING – Extruded, flat, diffuse acrylic lens.
- FINISH – Textured matte white polyester TGIC powder coat bonded to phosphate-free, multi-stage pretreated metal. All parts painted after fabrication to facilitate installation, increase efficiency, and inhibit corrosion.
- ELECTRICAL – High quality mid-power LED boards. L70 >60,000 hours per IES TM-21. 25°C maximum ambient operating temperature
- MOUNTING – Wall mount. Powder coated, die-formed C.R.S. receiving bracket mounted to fixture which attaches to galvanized, wall mounted bracket.
- LISTINGS – cETLus conforms to UL STD 1598. Certified to CAN/CSA STD C22.2 No. 250.0. Suitable for damp locations.
- WARRANTY – 5-year limited warranty, see hew.com/warranty.

ORDERING EXAMPLE: MX4W - 12'00 - L8/835 - F - OPTIONS - DIM - UNV

SERIES	LENGTH	LUMENS ^[1]	CRI	CCT
MX4W^[2]	Lengths specified in feet and inches using 4" increments, 2' minimum. Example: 12'00 = 12'-0"	L8 800lm	8 80	27 2700K
		L12 1200lm	9 90	30 3000K
		L15 1500lm		35 3500K
				40 4000K
				50 5000K

PRODUCT BUILDER
Simplify ordering & layout design with the Williams Linear Product Builder at hew.com/product-builder

SHIELDING	OPTIONS ^[3]	DRIVER ^[4]	VOLTAGE
F Flat, diffuse acrylic	EM/10W 10-watt emergency battery ^[6]	DIM Dimming driver	120 120V
P Proud, diffuse acrylic with 5/16" drop ^[5]	EM/10WRM Remote mount 10-watt emergency battery ^[7]	DRV Non-dimming driver	277 277V
	OCC_ Factory-installed occupancy sensor ^[8] : OCCWS FS-355-L6		UNV 120-277V
			347 347V ^[9]

NOTES

- ¹ Lumens per foot output based on 3500 CCT and F shielding. Actual lumens per foot may vary +/-5%. See page 2 for FIXTURE PERFORMANCE DATA.
- ² Up or down orientation is determined during installation.
- ³ See page 3 for FINISH OPTIONS. Custom colors available upon request. See Technical Info for [Power Entry](#) details.
- ⁴ See page 2 for ADDITIONAL DRIVER OPTIONS.
- ⁵ See page 3 for SHIELDING DETAILS.
- ⁶ L8 and L12 only; 120-277V only. Not available with fixtures less than 4'.
- ⁷ L15 only; 120-277V only. Must be remote mounted for fixtures less than 4'.
- ⁸ Must specify right or left orientation. See Product Builder at hew.com. Utilizes 4" of housing at end of fixture. See page 3 for FIXTURE DETAILS. 120V or 277V only. Recommended for use in downlight orientation only.
- ⁹ Not available with EM drivers.



MX4W LED 4" Continuous – Wall

FIXTURE PERFORMANCE DATA

	DOWN (PER FOOT)			UP (PER FOOT)		
	DELIVERED LUMENS	WATTAGE	EFFICACY (lm/W)	DELIVERED LUMENS	WATTAGE	EFFICACY (lm/W)
L8	824	7.3	113	851	7.3	117
L12	1175	10.8	108	1187	10.8	110
L15	1440	13.5	107	1440	13.5	107

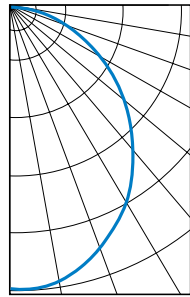
- Photometrics tested in accordance with IESNA LM-79. Results shown are based on 25°C ambient temperature.
- Wattage shown is average for 120V through 277V input.
- Results based on F shielding, 3500K, 80 CRI, actual lumens may vary +/-5%.
- Use multiplier table to calculate additional options.

MULTIPLIER TABLE

	COLOR TEMPERATURE	
	CCT	CONVERSION FACTOR
80 CRI	2700K	0.97
	3000K	0.99
	3500K	1.00
	4000K	1.03
	5000K	1.06
90 CRI	2700K	0.82
	3000K	0.83
	3500K	0.84
	4000K	0.86
	5000K	0.90

PHOTOMETRY

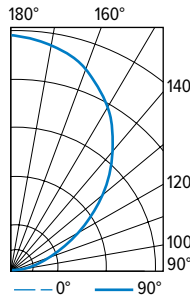
MX4WD-4'00-L8/835-F-DIM Total Luminaire Output: 3296 lumens; 29.2 Watts | Efficacy: 113 lm/W | 80 CRI; 3500K CCT



VERTICAL ANGLE	HORIZONTAL ANGLE			ZONAL LUMENS
	0°	45°	90°	
0	1302	1302	1302	
5	1329	1292	1278	123
15	1284	1232	1211	348
25	1149	1113	1087	512
35	996	948	931	597
45	808	771	742	597
55	604	576	540	513
65	394	370	354	368
75	185	178	177	192
85	29	36	33	45
90	0	0	0	

LUMEN SUMMARY	ZONE	LUMENS	% FIXTURE
	0 - 30	983	30
0 - 40	1580	48	
0 - 60	2690	82	
0 - 90	3296	100	
0 - 180	3296	100	

MX4WU-4'00-L8/835-F-DIM Total Luminaire Output: 3404 lumens; 29.2 Watts | Efficacy: 117 lm/W | 80 CRI; 3500K CCT



VERTICAL ANGLE	HORIZONTAL ANGLE			ZONAL LUMENS
	0°	45°	90°	
90	0	0	0	
95	20	19	17	29
105	161	123	103	138
115	382	285	242	298
125	643	516	431	477
135	933	818	688	624
145	1189	1112	1006	681
155	1389	1315	1261	603
165	1498	1456	1419	410
175	1557	1519	1501	144
180	1540	1540	1540	

LUMEN SUMMARY	ZONE	LUMENS	% FIXTURE
	90 - 120	465	14
90 - 130	941	28	
90 - 150	2247	66	
90 - 180	3404	100	
0 - 180	3404	100	

ADDITIONAL DRIVER OPTIONS

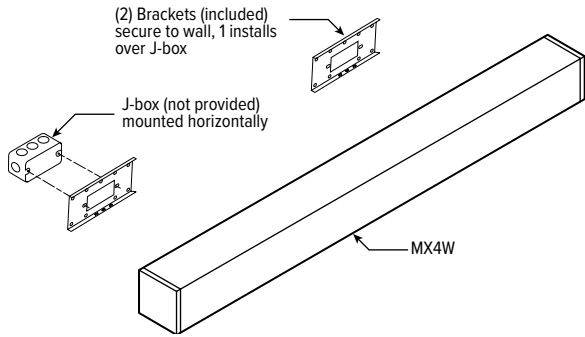
Note: Lumen restrictions apply, consult product builder at hew.com/product-builder.

CATALOG NUMBER	DESCRIPTION
DRV	Driver prewired for non-dimming applications
DIM	Dimming driver prewired for 0-10V low voltage applications
DIM1	1% dimming driver prewired for 0-10V low voltage applications
DIM LINE	Line voltage dimming driver (Must specify 120V or 277V only)
SD40	40% step-dimming driver
SD50	50% step-dimming driver
DALI	DALI dimming driver
LTE LINE	Lutron Hi-Lume® A-Series 1% dimming driver for forward phase line voltage controls (120V only)
LDE1	Lutron EcoSystem® H-Series 1% dimming driver for EcoSystem® controls
LDE5	Lutron EcoSystem® 5-Series 5% dimming driver for EcoSystem® controls
ELDO SOLOB	EldoLED Solodrive, 0.1% dimming driver for 0-10V controls
ELDO SOLOB DALI	EldoLED Solodrive, 0.1% dimming driver for DALI controls
ELDO ECO1	EldoLED Ecodrive, 1% dimming driver for 0-10V controls
ELDO ECO1 DALI	EldoLED Ecodrive, 1% dimming driver for DALI controls



MX4W LED 4" Continuous – Wall

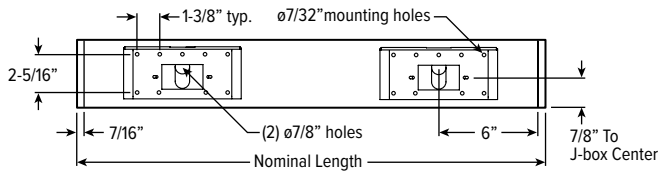
MOUNTING DETAILS



FIXTURE DETAILS

BACK VIEW

Standalone and feeder fixtures receive two mounting brackets. Joiner fixtures connect to feeder fixtures and receive one mounting bracket.

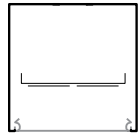


OCCUPANCY SENSOR

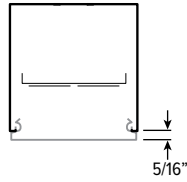


SHIELDING DETAILS

FLAT

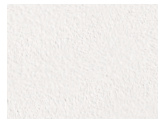


PROUD

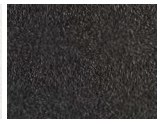


FINISH OPTIONS

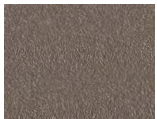
WHITE



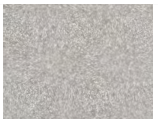
BLACK



BRONZE



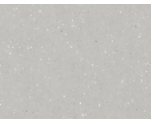
NICKEL



SILVER



ALUMINUM



For custom color, please specify RAL code or a manufacturer code with description. All custom colors other than RAL require two sample swatches, minimum 1" square.

