

CATALOG #: _____

TYPE: _____

PROJECT: _____

FEATURES

- Williams turn-key Power over Ethernet (PoE) solution provides plug-and-play networked lighting and control
- Tunable white from 3000K to 5000K CCT, minimum 80 CRI
- Create elegant spaces with a seamless, continuous row of illumination
- Flat and proud lenses give designers a variety of looks
- Moveable mounting hardware easily slides along the length of the fixture providing variable mounting points
- Maximize energy savings with efficacies as high as 132 lm/W
- Linear extrusion contains snap-in light rails for ease of installation and maintenance
- Versatile MX4 system includes recessed, surface, suspended and in-wall mounting, see hew.com
- Corner configurations available, see Product Builder at hew.com/product-builder
- Diffuse acrylic lens provides uniform illumination for visual comfort
- Made Right Here™ in the USA

SYSTEM REQUIREMENTS

- Lighting system (site software)
- Gateway or alternate server (runs software)
- PoE switches or Ethernet switches and mid-span power injectors
- See hew.com/poe for details

SPECIFICATIONS

- HOUSING** – Extruded aluminum with die-cast end plates.
- SHIELDING** – Extruded, flat, diffuse acrylic lens.
- FINISH** – Textured matte white polyester TGIC powder coat bonded to phosphate-free, multi-stage pretreated metal. All parts painted after fabrication to facilitate installation, increase efficiency, and inhibit corrosion.
- ELECTRICAL** – High quality mid-power LED board. L70 > 60,000 hours per IES TM-21. Low-voltage DC fixture, to be fed by Class 2 power supply. Tunable White products use LEDs of multiple CCTs and may produce a perceptibly different shade of white from single-CCT products at the same CCT. All CCTs are within 3 MacAdam ellipses.
- MOUNTING** – Suspended. 1/16" diameter adjustable steel leveling aircraft cable and mounting hardware necessary for grid and hardpan ceiling applications provided.
- LISTINGS** – cETLus conforms to UL STD 1598. Certified to CAN/CSA STD C22.2 No. 250.0. Suitable for damp locations.
- WARRANTY** – 5-year limited warranty, see hew.com/warranty.

ORDERING EXAMPLE: MX4D - 12'00 - P7/835 - F - AC/D48 - OPTIONS - POE N

SERIES	LENGTH
MX4D Down	Lengths specified in feet and inches using 4" increments, 2' minimum.
MX4U Up	Example: 12'00 = 12'-0"

PRODUCT BUILDER

Easily build shapes & simplify ordering with the Williams Linear Product Builder at hew.com/product-builder^[1]



LUMENS ^[2]	CRI	CCT	SHIELDING	MOUNTING (EXAMPLE: AC/D48) ^[3]
P7 700lm	8 80	27 2700K 30 3000K 35 3500K 40 4000K 50 5000K TW Tunable white (80 CRI, 3000K–5000K)	F Flat, diffuse acrylic P Proud, diffuse acrylic with 5/16" drop ^[4]	Prefix Type Length AC/ D 1" grid & hardpan 24 24" N 9/16" grid 48 48" S Slot grid 96 96" MSF_ Microstem, 1/4" IPS, specify length in inches ^[5]

OPTIONS^[6]

- EM/CP12** Remote mount 12-watt lora emergency battery^[8]
- V90** Vertical 90° corner, suspended^[9]

CONTROL^[7]

- POE N** Power over Ethernet network node
- POE D** Power over Ethernet device node^[10]

NOTES

- See page 4 for CORNER DETAILS.
- Nominal lumens per foot output based on F shielding and 3500K for single CCT and 4000K for TW. Actual lumens may vary ±5%. See page 2 for FIXTURE PERFORMANCE DATA.
- See page 3 for MOUNTING DETAILS.
- MX4D only. See page 3 for SHIELDING DETAILS. Not available with corner configurations or transition options.
- MX4D only.
- See page 3 for FINISH OPTIONS. Custom colors available upon request. See hew.com/poe for compatible sensors and switches.
- For additional PoE info, see hew.com/poe.
- Requires one additional category cable run to switch. See page 2 for REMOTE MOUNT DETAILS.
- Connects MX4D to vertically mounted MX4RW; F shielding only. See page 3 for FIXTURE DETAILS. Ships separately.
- Not available with fixtures over 40W.



MX4 PoE | tunable WHITE 4" Continuous – Suspended

FIXTURE PERFORMANCE DATA

STANDARD - DOWNLIGHT (PER FOOT)

	DELIVERED LUMENS	WATTAGE	EFFICACY (lm/W)
7'	707	6	121

TUNABLE WHITE - DOWNLIGHT (PER FOOT)

	DELIVERED LUMENS	WATTAGE	EFFICACY (lm/W)
7'	703	5	128

STANDARD - UPLIGHT (PER FOOT)

	DELIVERED LUMENS	WATTAGE	EFFICACY (lm/W)
7'	728	6	124

TUNABLE WHITE - UPLIGHT (PER FOOT)

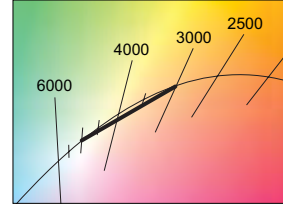
	DELIVERED LUMENS	WATTAGE	EFFICACY (lm/W)
7'	724	5	132

MULTIPLIER TABLES

STANDARD	
COLOR TEMPERATURE	
CCT	CONVERSION FACTOR
2700K	0.97
3000K	0.99
3500K	1.00
4000K	1.03
5000K	1.06

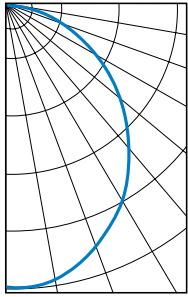
TUNABLE WHITE	
COLOR TEMPERATURE	
CCT	CONVERSION FACTOR
3000K	0.95
3500K	0.98
4000K	1.00
5000K	0.96

- Photometrics tested in accordance with IESNA LM-79. Results shown are based on 25°C ambient temperature.
- Standard results based on 3500K standard, 80 CRI, actual lumens may vary ±5%.
- Tunable white results based on 4000K standard, 80 CRI, actual lumens may vary ±5%.
- Use multiplier tables to calculate additional options.



PHOTOMETRY

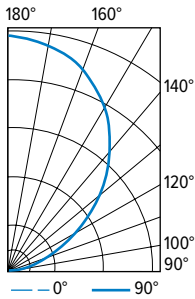
MX4D-4'00-P7/835-F-POE N Total Luminaire Output: 2828 lumens; 23.4 Watts | Efficacy: 121 lm/W | 80 CRI; 3500K CCT



VERTICAL ANGLE	HORIZONTAL ANGLE			ZONAL LUMENS
	0°	45°	90°	
0	1117	1117	1117	
5	1140	1108	1097	105
15	1102	1057	1039	299
25	986	955	932	439
35	854	813	798	512
45	693	662	637	512
55	518	494	463	440
65	338	318	304	316
75	159	153	151	165
85	25	31	28	39
90	0	0	0	

LUMEN SUMMARY	ZONE	LUMENS	% FIXTURE
	0 - 30	843	30
	0 - 40	1356	48
	0 - 60	2308	82
	0 - 90	2828	100
	0 - 180	2828	100

MX4U-4'00-P7/835-F-POE N Total Luminaire Output: 2912 lumens; 23.4 Watts | Efficacy: 124 lm/W | 80 CRI; 3500K CCT



VERTICAL ANGLE	HORIZONTAL ANGLE			ZONAL LUMENS
	0°	45°	90°	
90	0	0	0	
95	17	16	14	24
105	138	105	88	118
115	327	244	207	255
125	550	441	369	408
135	798	700	588	534
145	1017	951	861	583
155	1188	1125	1079	516
165	1281	1245	1214	351
175	1332	1300	1284	124
180	1318	1318	1318	

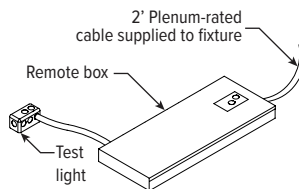
LUMEN SUMMARY	ZONE	LUMENS	% FIXTURE
	90 - 120	397	14
	90 - 130	805	28
	90 - 150	1922	66
	90 - 180	2912	100
	0 - 180	2912	100

REMOTE MOUNT DETAILS

Includes 2' plenum-rated 18ga. solid cable. Remote box can be installed in:

- Above ceiling grid
- Remote closet (within 100ft)
- Surface below ceiling

EM OPTION



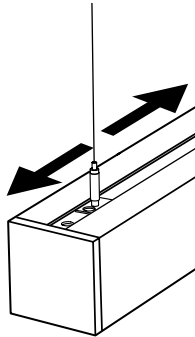
MX4 PoE | tunable WHITE

4" Continuous – Suspended

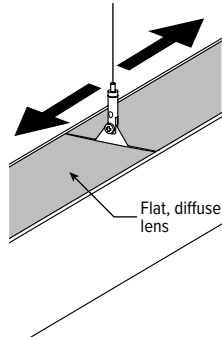
MOUNTING DETAILS

Aircraft cable and microstem mounting accessories can be repositioned along the length of the channel, providing flexible mounting locations to suit any application.

AIRCRAFT CABLE

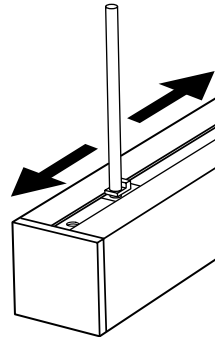


MX4D Direct Hanger



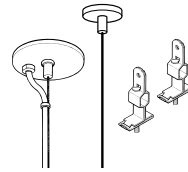
MX4U Mid-fixture Hanger

MICROSTEM



MX4D

STANDARD HARDWARE (GRID AND HARDPAN)

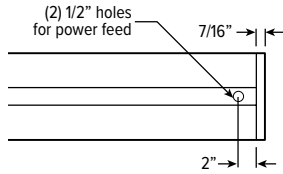


Notes:

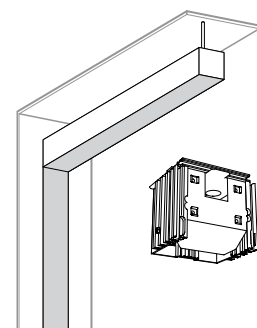
- Power feed locations are 2" from end (downlight) or at end of fixture (uplight).
- Fixtures are provided with adjustable length aircraft cables and mounting hardware, must specify.
- Electrical supply is brought into the feeder fixture, either as part of a row or as a stand-alone unit. Joiner fixtures complete the row. One power drop per node required.

FIXTURE DETAILS

MX4D BACK VIEW



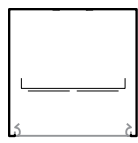
V90 CORNER ACCESSORY



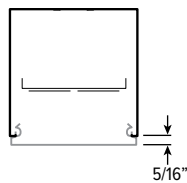
Includes tamper resistant lens bracket for lower end of vertical fixture.

SHIELDING DETAILS

FLAT

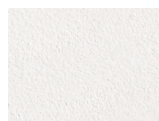


PROUD

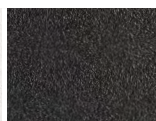


FINISH OPTIONS

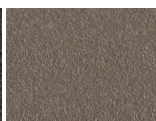
WHITE



BLACK



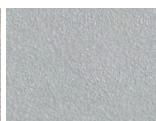
BRONZE



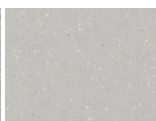
NICKEL



SILVER



ALUMINUM

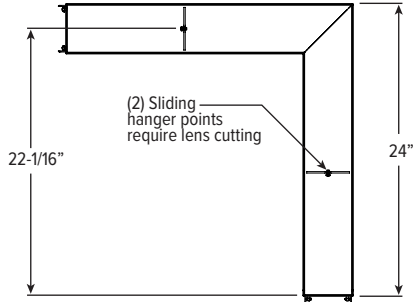


For custom color, please specify RAL code or a manufacturer code with description. All custom colors other than RAL require two sample swatches, minimum 1" square.

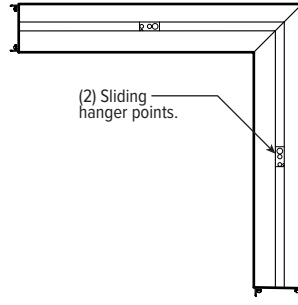


CORNER DETAILS

MX490U BACK VIEW



MX490D BACK VIEW



Note: Corner orientation determined in field.
Feeder corner end cap shipped separately.

