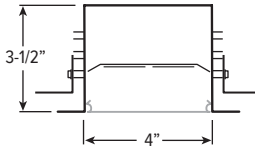


# MX4RW PoE | tunable WHITE

## 4" Continuous – Recessed Shallow Wall or Hard Surface



CATALOG #: \_\_\_\_\_

TYPE: \_\_\_\_\_

PROJECT: \_\_\_\_\_

### FEATURES

- Williams turn-key Power over Ethernet (PoE) solution provides plug-and-play networked lighting and control
- Tunable white from 3000K to 5000K CCT, minimum 80 CRI
- Create elegant spaces with a seamless, continuous row of illumination
- Designed for 3-1/2" shallow drywall or hard surface frames
- Flat and regressed lenses give designers a variety of looks
- Maximize energy savings with efficacies as high as 136 lm/W
- Versatile MX4 system includes recessed, surface, suspended and in-wall mounting, see [hew.com](http://hew.com)
- Diffuse acrylic lens provides uniform illumination for visual comfort
- Made Right Here™ in the USA

### SYSTEM REQUIREMENTS

- Lighting system (site software)
- Gateway or alternate server (runs software)
- PoE switches or Ethernet switches and mid-span power injectors
- See [hew.com/poe](http://hew.com/poe) for details

### SPECIFICATIONS

- HOUSING – Extruded aluminum.
- SHIELDING – Extruded, flat, diffuse acrylic lens.
- FINISH – 92% minimum average reflective white polyester powder coat bonded to phosphate-free, multi-stage pretreated metal. All parts painted after fabrication to facilitate installation, increase efficiency, and inhibit corrosion.
- ELECTRICAL – High quality mid-power LED board. L70 > 60,000 hours per IES TM-21. Low-voltage DC fixture, to be fed by Class 2 power supply. Tunable White products use LEDs of multiple CCTs and may produce a perceptibly different shade of white from single-CCT products at the same CCT. All CCTs are within 3 MacAdam ellipses.
- MOUNTING – Drywall mount allowing for materials 1/4" - 2" thick. Fixture to be installed prior to drywall or finished hard surface material.
- LISTINGS – cETLus conforms to UL STD 1598. Certified to CAN/CSA STD C22.2 No. 250.0. Suitable for damp locations.
- WARRANTY – 5-year limited warranty, see [hew.com/warranty](http://hew.com/warranty).

### ORDERING EXAMPLE: MX4RWTR - 8'00 - P7/835 - F - OPTIONS - POE N

SERIES	FIXTURE STYLE	LENGTH	LUMENS <sup>[1]</sup>	CRI	CCT
MX4RW	TR Drywall or Hard Surface - Trim	Lengths specified in feet and inches using 4" increments, 2' minimum.	P7 700lm	8 80	27 2700K
	TL Drywall or Hard Surface - Trimless	Example: 8'00 = 8'-0"			30 3000K
					35 3500K
					40 4000K
					50 5000K
					TW Tunable white (80 CRI, 3000K-5000K)

**PRODUCT BUILDER**  
Simplify ordering & layout design with the Williams Linear Product Builder at [hew.com/product-builder](http://hew.com/product-builder)

SHIELDING	OPTIONS <sup>[2]</sup>	CONTROL <sup>[3]</sup>
F Flat, diffuse acrylic	EM/CP12 Remote mount 12-watt lora emergency battery <sup>[5]</sup>	POE N Power over Ethernet network node
R Regressed diffuse acrylic <sup>[4]</sup>	V90 Vertical 90° corner, suspended <sup>[6]</sup>	POE D Power over Ethernet device node <sup>[9]</sup>
	V90R Vertical 90° corner, recessed <sup>[7]</sup>	
	V90G Vertical 90° corner, grid <sup>[8]</sup>	

### NOTES

- Lumens per foot output based on F shielding and 3500K for single CCT and 4000K for TW. Actual lumens may vary ±5%. See page 2 for FIXTURE PERFORMANCE DATA.
- See page 3 for FINISH OPTIONS. Custom colors available upon request. See [hew.com/poe](http://hew.com/poe) for compatible sensors and switches.
- For additional PoE info, see [hew.com/poe](http://hew.com/poe).
- See page 3 for SHIELDING DETAILS. Not available with transition options.
- Requires one additional category cable run to switch. See page 2 for REMOTE MOUNT DETAILS.
- Connects MX4D to vertically mounted MX4RW. See page 3 for FIXTURE DETAILS. Ships separately.
- Transitions MX4RT to vertically mounted MX4RW. See page 3 for FIXTURE DETAILS. Ships separately.
- Connects MX4RG to vertically mounted MX4RW. See page 3 for FIXTURE DETAILS. Ships separately.
- Not available with fixtures over 40W.



# MX4RW PoE | tunable WHITE

## 4" Continuous – Recessed Shallow Wall or Hard Surface

### FIXTURE PERFORMANCE DATA

#### STANDARD (PER FOOT)

	DELIVERED LUMENS	WATTAGE	EFFICACY (lm/W)
7	749	6	128

#### TUNABLE WHITE (PER FOOT)

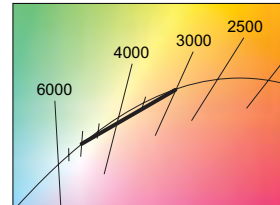
	DELIVERED LUMENS	WATTAGE	EFFICACY (lm/W)
7	745	5	136

#### MULTIPLIER TABLES

STANDARD	
COLOR TEMPERATURE	
CCT	CONVERSION FACTOR
2700K	0.97
3000K	0.99
3500K	1.00
4000K	1.03
5000K	1.06

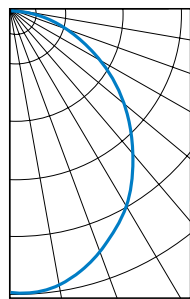
TUNABLE WHITE	
COLOR TEMPERATURE	
CCT	CONVERSION FACTOR
3000K	0.95
3500K	0.98
4000K	1.00
5000K	0.96

- Photometrics tested in accordance with IESNA LM-79. Results shown are based on 25°C ambient temperature.
- Standard results based on 3500K standard, 80 CRI, actual lumens may vary ±5%.
- Tunable white results based on 4000K standard, 80 CRI, actual lumens may vary ±5%.
- Use multiplier tables to calculate additional options.



### PHOTOMETRY

**MX4RWTR-4'00-P7/835-F-POE N** Total Luminaire Output: 2996 lumens; 23.4 Watts | Efficacy: 128 lm/W | 80 CRI; 3500K CCT



VERTICAL ANGLE	HORIZONTAL ANGLE			ZONAL LUMENS
	0°	45°	90°	
0	1227	1227	1227	
5	1233	1211	1209	115
15	1176	1147	1140	325
25	1051	1034	1019	476
35	902	875	859	551
45	724	708	679	544
55	544	511	502	463
65	338	326	316	324
75	154	153	154	164
85	24	24	24	36
90	2	0	0	

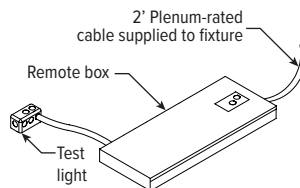
LUMEN SUMMARY	ZONE	LUMENS	% FIXTURE
	0 - 30	916	31
	0 - 40	1467	49
	0 - 60	2473	83
	0 - 90	2996	100
	0 - 180	2996	100

### REMOTE MOUNT DETAILS

Includes 2' plenum-rated 18ga. solid cable. Remote box can be installed in:

- Above ceiling grid
- Remote closet (within 100ft)
- Surface below ceiling

#### EM OPTION

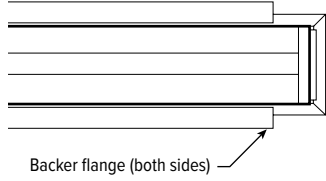


# MX4RW PoE | tunable WHITE

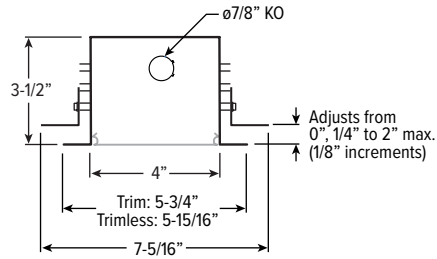
## 4" Continuous – Recessed Shallow Wall or Hard Surface

### FIXTURE DETAILS

#### BACK VIEW

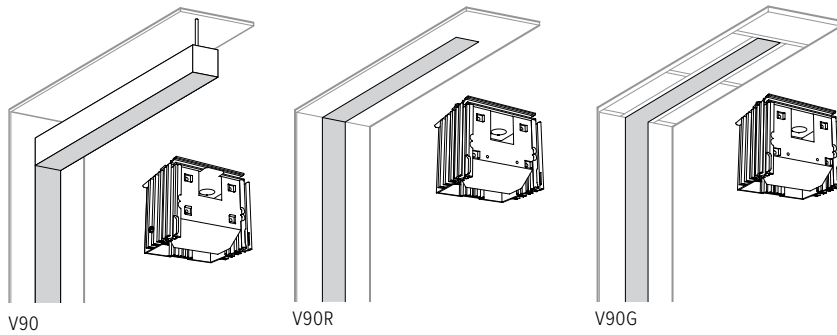


#### END VIEW



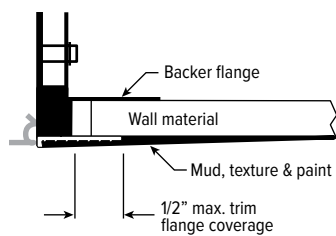
#### TRANSITION CORNERS

Includes tamper resistant lens bracket for lower end of vertical fixture.

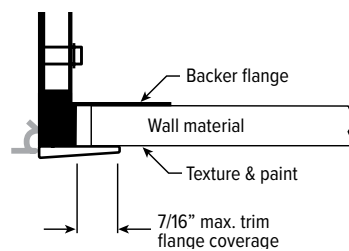


#### TRIM FINISH DETAILS

##### Trimless



##### Trim

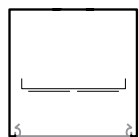


#### ROUGH-IN DIMENSIONS

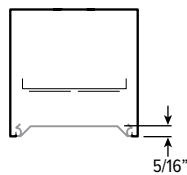
- Framing allowance for width is 5-3/4"  $\pm$  1/4".
- Framing allowance for length is total length plus 1-1/2" minimum.

### SHIELDING DETAILS

#### FLAT

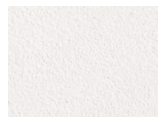


#### REGRESSED

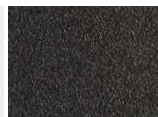


### FINISH OPTIONS

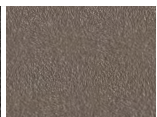
#### WHITE



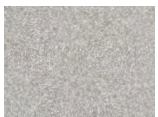
#### BLACK



#### BRONZE



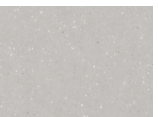
#### NICKEL



#### SILVER



#### ALUMINUM



For custom color, please specify RAL code or a manufacturer code with description. All custom colors other than RAL require two sample swatches, minimum 1" square.

