

CATALOG #: _____

TYPE: _____

PROJECT: _____

FEATURES

- Tunable white from 3000K to 5000K CCT, minimum 80 CRI
- Create elegant spaces with a seamless, continuous row of illumination
- Flat and proud lenses give designers a variety of looks
- Maximize energy savings with efficacies as high as 123 lm/W
- Linear extrusion contains snap-in light rails for ease of installation and maintenance
- Versatile MX4 system includes recessed, surface, suspended and in-wall mounting, see hew.com
- Corner configurations available, see Product Builder at hew.com/product-builder
- Diffuse acrylic lens provides uniform illumination for visual comfort
- Made Right Here™ in the USA

SPECIFICATIONS

- HOUSING – Extruded aluminum with die-cast end plates.
- SHIELDING – Extruded, flat, diffuse acrylic lens.
- FINISH – Textured matte white polyester TGIC powder coat bonded to phosphate-free, multi-stage pretreated metal. All parts painted after fabrication to facilitate installation, increase efficiency, and inhibit corrosion.
- ELECTRICAL – High quality mid-power LED board. L70 > 60,000 hours per IES TM-21. Tunable White products use LEDs of multiple CCTs and may produce a perceptibly different shade of white from single-CCT products at the same CCT. All CCTs are within 3 MacAdam ellipses.
- MOUNTING – Surface.
- LISTINGS – cETLus conforms to UL STD 1598. Certified to CAN/CSA STD C22.2 No. 250.0. Suitable for damp locations.
- WARRANTY – 5-year limited warranty, see hew.com/warranty.

ORDERING EXAMPLE: MX4S - 12'00 - L8/8TW - F - OPTIONS - DALI - UNV

SERIES LENGTH

MX4S Lengths specified in feet and inches using 4" increments, 2' minimum.
Example: **12'00** = 12'-0"

PRODUCT BUILDER

Easily build shapes & simplify ordering with the Williams Linear Product Builder at hew.com/product-builder ^[1]



LUMENS ^[2]	COLOR	SHIELDING	OPTIONS ^[3]
L8 800lm	8TW Tunable white (80 CRI, 3000K-5000K)	F Flat, diffuse acrylic P Proud, diffuse acrylic with 5/16" drop ^[4]	EM/10W 10-watt emergency battery ^[5] EM/10WRM Remote mount 10-watt emergency battery ^[6] OCC__ Factory-installed occupancy sensor ^[7] : OCCWS FS-355-L6

CONTROL ^[8]

DALI Driver prewired for DALI applications
DIM (1) 0-10V signal to control dimming
(1) 0-10V signal to control CCT
DMX Driver prewired for DMX applications

VOLTAGE

120 120V
277 277V
UNV 120-277V

NOTES

- ¹ See page 3 for CORNER DETAILS.
- ² Lumens per foot based on 4000K CCT and F shielding. Actual lumens may vary ±5%. See page 2 for FIXTURE PERFORMANCE DATA.
- ³ See page 3 for FINISH OPTIONS. Custom colors available upon request. See Technical Info for [Power Entry](#) details.
- ⁴ See page 3 for SHIELDING DETAILS. Not available with corner configurations.
- ⁵ L8 and L12 only; 120-277V only. Not available with fixtures less than 4'.
- ⁶ L15 only; 120-277V only. Must be remote mounted for fixtures less than 4'.
- ⁷ Utilizes 4" of housing at end of fixture. See page 3 for FIXTURE DETAILS. 120V or 277V only.
- ⁸ See page 2 for CONTROL DETAILS.



MX4S tunable WHITE 4" Continuous – Surface

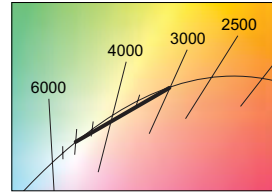
FIXTURE PERFORMANCE DATA

L8	PER FOOT		
	DELIVERED LUMENS	WATTAGE	EFFICACY (lm/W)
	821	6.7	123

- Photometrics tested in accordance with IESNA LM-79. Results shown are based on 25°C ambient temperature.
- Wattage shown is average for 120V through 277V input.
- Results based on 4000K, 80 CRI, actual lumens may vary +/-5%
- Use multiplier table to calculate additional options.

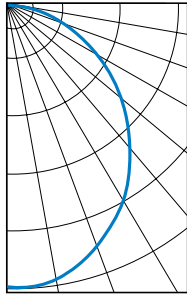
MULTIPLIER TABLE

CCT	CONVERSION FACTOR	
	LUMENS	WATTAGE
3000K	0.95	1.04
3500K	0.98	1.02
4000K	1.00	1.00
5000K	0.96	1.04



PHOTOMETRY

MX4S-4'00-L8/8TW-F-DALI Total Luminaire Output: 3284 lumens; 26.8 Watts | Efficacy: 123 lm/W | 80 CRI; 3500K CCT



CANDLEPOWER DISTRIBUTION	VERTICAL ANGLE	HORIZONTAL ANGLE			ZONAL LUMENS
		0°	45°	90°	
	0	1297	1297	1297	
	5	1324	1287	1273	122
	15	1280	1228	1206	347
	25	1145	1109	1083	510
	35	992	944	927	595
	45	805	768	740	595
	55	602	573	538	511
	65	392	369	353	367
	75	185	177	176	192
	85	29	36	33	45
	90	0	0	0	

LUMEN SUMMARY	ZONE	LUMENS	% FIXTURE
	0 - 30	979	30
	0 - 40	1574	48
	0 - 60	2680	82
	0 - 90	3284	100
	0 - 180	3284	100

CONTROL DETAILS

DIM



DALI



DMX

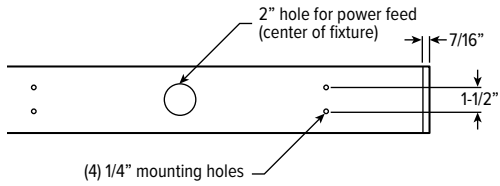


MX4S tunable WHITE

4" Continuous – Surface

FIXTURE DETAILS

BACK VIEW

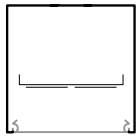


OCCUPANCY SENSOR

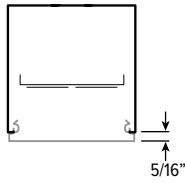


SHIELDING DETAILS

FLAT

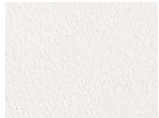


PROUD

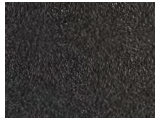


FINISH OPTIONS

WHITE



BLACK



BRONZE



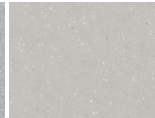
NICKEL



SILVER



ALUMINUM

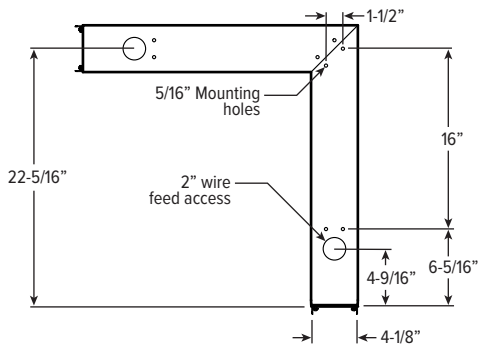


For custom color, please specify RAL code or a manufacturer code with description. All custom colors other than RAL require two sample swatches, minimum 1" square.

CORNER DETAILS

BACK VIEW

LEFT



Note: Corner orientation determined in field. Feeder corner end cap shipped separately.

