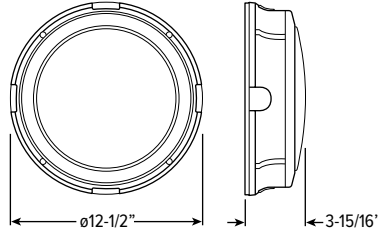
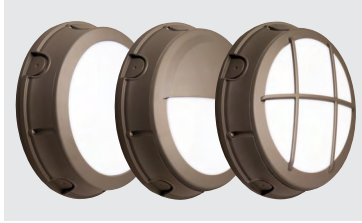


WLRD LED Bulkhead Wall Pack – Round



CATALOG #: _____

TYPE: _____

PROJECT: _____

FEATURES

- Three frame styles provide decorative appearance for effective accent and security lighting
- Energy-saving alternative to traditional HID fixtures
- Polycarbonate opal vandal-resistant lens eliminates LED hot spots
- 8' – 20' mounting heights
- Optional energy-saving photocells and occupancy sensor available
- Maximize energy savings with efficacies as high as 111 lm/W

ORDERING EXAMPLE: WLRD0 - L22/840 - BZ - OPTIONS - DIM - UNV

ORDERING INFO

SERIES	STYLE ^[1]	LUMENS ^[2]	CRI	CCT	FINISH	OPTIONS ^[3]
WLRD	O Open	L22 2,200lm	8 80	30 3000K 40 4000K 50 5000K	BZ Bronze WHT White	SF Single fuse
	C Cutoff					DF Double fuse
	G Grid					SP10 10kV surge protection ^[4]
						PC Photocell, 120-277V
						P14 Pencil Photocell, 120-277V
						OCC-S2X Integral occupancy and motion sensor with dimming ^[5]
						EM/6W 6-watt emergency battery ^[6]

SPECIFICATIONS

- HOUSING – Die-cast gasketed aluminum enclosure. Nickel-plated stainless steel hardware.
- OPTICAL – Type IV wide forward throw distribution.
- THERMAL – Integral heat sink. Operating temperature -40°C to 50°C.
- LENS – Polycarbonate opal lens.
- LED DRIVER – 0-10V integral dimming driver.
- ELECTRICAL – 120-277V input range; 50-60Hz; power factor >0.90; THD<20%. 2kV standard surge protection. L70 = 187,000 hours at 25°C.
- FINISH – Textured bronze powder coat over a chromate conversion coating.
- MOUNTING – Surface mount.
- LISTINGS – CSA listed for wet locations, ANSI/UL 1598, 8750; IP66 sealed LED compartment.
- WARRANTY – 5-year limited warranty, see hew.com/warranty.

DRIVER	VOLTAGE
DIM Dimming driver ^[7]	UNV 120-277V

NOTES

- See page 2 for STYLE DETAILS.
- Lumen output based on 4000 CCT. Actual lumens may vary +/-5%, see page 2 for FIXTURE PERFORMANCE DATA.
- Fixtures ordered with factory-installed photocell or motion sensor controls are internally wired for switching and/or 1-10V dimming within the housing.
- In addition to 2kV standard surge protection, total of 12kV.
- For mounting heights 8'-40', 120-277V only.
- 90 minutes emergency operation; ambient operating temperature range: 10°C to 50°C.
- Prewired for 0-10V low voltage applications

WLRD LED Bulkhead Wall Pack – Round

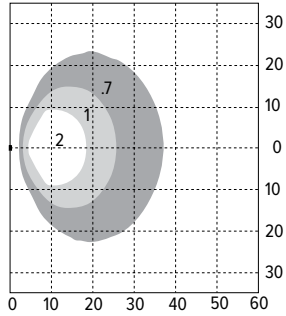
FIXTURE PERFORMANCE DATA

STYLE	DELIVERED LUMENS	WATTAGE	EFFICACY (lm/W)
Open	2230	20	111.5
Cutoff	1858		92.5
Grid	1897		94.9

- Photometrics tested in accordance with IESNA LM-79. Results shown are based on 25°C ambient temperature.
- Wattage shown is average for 120V through 277V input.
- Results based on 4000K, 80 CRI, actual lumens may vary +/-5%
- Use multiplier table to calculate additional options.

FOOTCANDLE DISTRIBUTIONS

OPEN

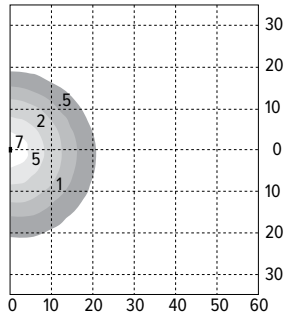


Footcandle calculations based on standard building reflectance of .10 with a ground reflectance of .0 and a light loss factor of .90.

Fixture installed at 10' mounting height.

- Efficacy: 112 lm/W
- Flux: 2230 lm
- CRI: 80
- CCT: 4000K
- BUG Ratings: B1-U1-G0

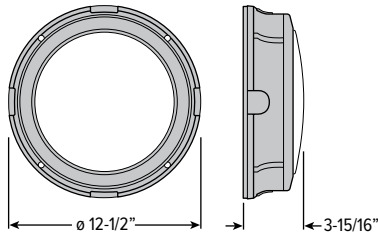
CUTOFF



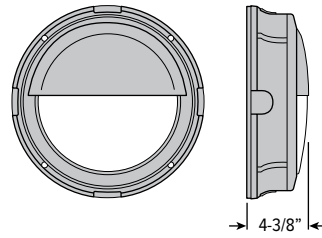
- Efficacy: 93 lm/W
- Flux: 1858 lm
- CRI: 80
- CCT: 4000K
- BUG Ratings: B1-U1-G0

STYLE DETAILS

OPEN



CUTOFF



GRID

