

CATALOG #: \_\_\_\_\_

TYPE: \_\_\_\_\_

PROJECT: \_\_\_\_\_

## FEATURES

- Semi-cutoff wall luminaire places light where it's needed with reduced glare
- Savings of up to 75% energy compared to HID systems
- Provides effective security and accent lighting
- 12' – 18' mounting heights
- Optional energy-saving photocells available
- Includes easy-hang wall mounting plate with built-in level for simplified installation

## SPECIFICATIONS

- **HOUSING** – Die-cast hinged and gasketed aluminum enclosure. Nickel-plated stainless steel hardware.
- **OPTICAL** – Semi-cutoff front frame. Type IV wide forward throw distribution.
- **LENS** – Prismatic borosilicate glass lens.
- **LED DRIVER** – 0-10V integral dimming driver.
- **ELECTRICAL** – 120-277V or 347-480V input range; 50-60Hz; power factor >0.90; THD<20%. 6kV standard surge protection. L70 = 129,000 hours at 25°C. Operating temperature -40°C to 40°C.
- **FINISH** – Textured bronze powder coat over a chromate conversion coating.
- **MOUNTING** – Cast-in template to mount directly over a 4" recessed outlet box or 1/2" surface conduit.
- **LISTINGS** – CSA listed for wet locations, ANSI/UL 1598, 8750; IP65 sealed LED compartment.
- **WARRANTY** – 5-year limited warranty, see [hew.com/warranty](http://hew.com/warranty).

## ORDERING EXAMPLE: WPAS - L34/850 - BZ - OPTIONS - DIM - UNV

### ORDERING INFO

SERIES	LUMENS <sup>[1]</sup>	CRI	CCT	FINISH	OPTIONS <sup>[2]</sup>
WPAS	L34 3,400lm	80	50 5000K	BZ Bronze	<b>SF</b> Single fuse <sup>[3]</sup> <b>DF</b> Double fuse <sup>[4]</sup> <b>SP10</b> 10kV surge protection <sup>[5]</sup> <b>PC</b> Photocell, 120-277V <b>P14</b> Pencil Photocell, 120-277V <b>P20</b> Swivel Photocell, 120V <b>P22</b> Swivel Photocell, 208-277V <b>EM/6W</b> 6-watt emergency battery <sup>[6]</sup> <b>WG</b> Stainless steel wireguard <sup>[7]</sup>

DRIVER	VOLTAGE
<b>DIM</b> Dimming driver <sup>[8]</sup>	<b>UNV</b> 120-277V <b>HV</b> 347-480V

## NOTES

- <sup>1</sup> Lumen output based on 5000 CCT. Actual lumens may vary +/-5%, see page 2 for FIXTURE PERFORMANCE DATA.
- <sup>2</sup> Fixtures ordered with factory-installed photocell are internally wired for switching and/or 1-10V dimming within the housing.
- <sup>3</sup> Not available with HV option.
- <sup>4</sup> Not available with HV option.
- <sup>5</sup> In addition to 6kV standard surge protection, total of 16kV.
- <sup>6</sup> 90 minutes emergency operation; ambient operating temperature range: 10°C to 50°C.
- <sup>7</sup> Ordered and shipped separately, field installed.
- <sup>8</sup> Prewired for 0-10V low voltage applications

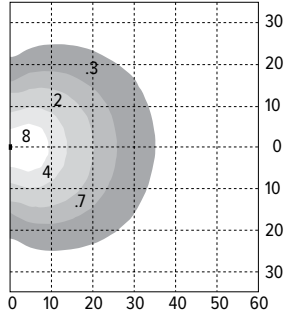
# WPAS<sup>LED</sup> Architectural Wall Pack – Small

## FIXTURE PERFORMANCE DATA

	DELIVERED LUMENS	WATTAGE	EFFICACY (lm/W)
L34	3433	44	78.0

- Photometrics tested in accordance with IESNA LM-79. Results shown are based on 25°C ambient temperature.
- Wattage shown is average for 120V through 277V input.
- Results based on 5000K, 80 CRI, actual lumens may vary +/-5%

## FOOTCANDLE DISTRIBUTIONS



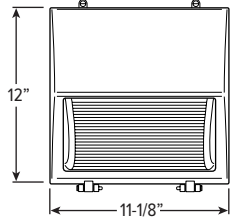
Footcandle calculations based on standard building reflectance of .10 with a ground reflectance of .0 and a light loss factor of .90.

Fixture installed at 10' mounting height.

- Efficacy: 78 lm/W
- Flux: 3433 lm
- CRI: 80
- CCT: 5000K
- BUG Ratings: B1-U3-G3

## FIXTURE DETAILS

FRONT VIEW



SIDE VIEW

