

CATALOG #: _____

TYPE: _____

PROJECT: _____

FEATURES

- Full cutoff wall luminaire places light where it's needed with minimal glare
- Energy-saving alternative to traditional HID fixtures
- Provides effective security lighting
- 12' – 25' mounting heights
- Optional energy-saving photocells and occupancy sensor available
- Includes easy-hang wall mounting bracket with built-in level for simplified installation
- Maximize energy savings with efficacies as high as 122 lm/W

SPECIFICATIONS

- HOUSING – Die-cast aluminum enclosure. Nickel-plated stainless steel hardware.
- THERMAL – Integral heat sink. Operating temperature -40°C to 50°C.
- OPTICAL – Full cutoff front frame. Type IV wide forward throw distribution.
- LENS – Clear one-piece molded polycarbonate lens.
- LED DRIVER – 0-10V integral dimming driver.
- ELECTRICAL – 120-277V input range; 50-60Hz; power factor >0.90; THD<20%. 6kV standard surge protection. L70 = 646,000 hours at 25°C.
- FINISH – Textured bronze powder coat over a chromate conversion coating.
- MOUNTING – Surface mounts directly over a 4" recessed outlet box.
- LISTINGS – CSA listed for wet locations, ANSI/UL 1598, 8750; IP66 sealed LED compartment.
- WARRANTY – 5-year limited warranty, see hew.com/warranty.

ORDERING EXAMPLE: WPCS - L30/840 - BZ - OPTIONS - DIM - UNV

ORDERING INFO

SERIES	LUMENS ^[1]	CRI	CCT	FINISH	OPTIONS ^[2]
WPCS	L30	3,000lm	80	40 4000K	BZ Bronze
	L44	4,400lm	50	50 5000K	SF Single fuse
	L90	9,000lm			DF Double fuse
					SP10 10kV surge protection ^[3]
					R3 3-Pin twist lock photocell receptacle
					R7 7-pin twist lock photocell receptacle ^[4]
					PC Photocell, 120-277V
					OCC-S23 Integral occupancy and motion sensor with dimming ^[5]
					EM/6W 6-watt emergency battery ^[6]
					AT Aluminum trim plate ^[7]

DRIVER	VOLTAGE
DIM Dimming driver ^[8]	UNV 120-277V

NOTES

- ¹ Lumen output based on 4000 CCT. Actual lumens may vary +/-5%, see page 2 for FIXTURE PERFORMANCE DATA.
- ² Fixtures ordered with factory-installed photocell or motion sensor controls are internally wired for switching and/or 1-10V dimming within the housing.
- ³ In addition to 6kV standard surge protection, total of 16kV.
- ⁴ ANSI C136.41-2013
- ⁵ For mounting heights 25' or less.
- ⁶ 90 minutes emergency operation; ambient operating temperature range: 10°C to 50°C. L97 and L136 only
- ⁷ Ordered and shipped separately, field installed. For use in retrofit applications. Bronze powder coat finish.
- ⁸ Prewired for 0-10V low voltage applications

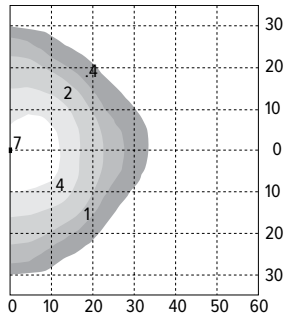
WPCS LED Full Cutoff Wall Pack – Small

FIXTURE PERFORMANCE DATA

	COLOR TEMPERATURE	DELIVERED LUMENS	WATTAGE	EFFICACY (lm/W)
L30	4000	3147	28	112.4
	5000	3420		122.1
L44	4000	4454	42	106.0
	5000	4599		109.5
L90	4000	9155	84	109.0
	5000	9267		110.3

- Photometrics tested in accordance with IESNA LM-79. Results shown are based on 25°C ambient temperature.
- Wattage shown is average for 120V through 277V input.
- Results based on 4000K, 80 CRI, actual lumens may vary +/-5%

FOOTCANDLE DISTRIBUTIONS

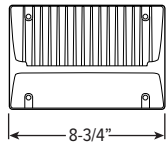


Footcandle calculations based on standard building reflectance of .10 with a ground reflectance of .0 and a light loss factor of .90.
 Fixture installed at 10' mounting height.

- Efficacy: 106 lm/W
- Flux: 4454 lm
- CRI: 80
- CCT: 4000K
- BUG Ratings: B1-U0-G1

FIXTURE DETAILS

FRONT VIEW



SIDE VIEW

