

PXG shown

CATALOG #: _____

TYPE: _____

PROJECT: _____

FEATURES

- Tunable white from 3000K to 5000K CCT, minimum 80 CRI
- Dramatically illuminate accent walls and emphasize textured surfaces
- Sleek, linear design incorporates clean lines, slim styling, and a continuous row of light
- Allows for 90° run connections in both inside and outside corner installs
- Quick and easy installation with wall mounted bracket providing multiple pre-drilled screw locations and a quick hang feature for the fixture
- Solutions for both grid and drywall ceilings
- Adjustable extensions allow for a perfect fit to meet adjacent walls and create corners
- Diffuse acrylic lens shields LEDs from view
- Made Right Here® in the USA

SPECIFICATIONS

- **HOUSING** – Formed sheet metal and aluminum.
- **SHIELDING** – Extruded diffuse acrylic lens.
- **FINISH** – Textured matte white polyester TGIC powder coat bonded to phosphate-free, multistage pretreated metal. All parts painted after fabrication to facilitate installation, increase efficiency, and inhibit corrosion.
- **ELECTRICAL** – High quality mid-power LED board. L70 > 50,000 hours per IES TM-21. Tunable White products use LEDs of multiple CCTs and may produce a perceptibly different shade of white from single-CCT products at the same CCT. All CCTs are within 3 MacAdam ellipses.
- **MOUNTING** – Wall mount rail, predrilled with wall screw locations, with quick hang feature.
- **LABELS** – cETLus conforms to UL STD 1598. Certified to CAN/CSA STD C22.2 No. 250.0. Suitable for damp locations.
- **WARRANTY** – 5-year limited warranty, see hew.com/warranty.

ORDERING EXAMPLE: PX G - 46 - 14'08 - L10/8TW - G - L90IN/R45OUT - OPTIONS - DIM - UNV

ORDERING INFO

SERIES	CEILING TYPE	WIDTH	HEIGHT	LENGTH
PX	G Grid F Drywall	4 4"	6 6"	Lengths specified in feet and inches using 1" increments, 2" minimum. Example: 14'08 = 14'-8"

PRODUCT BUILDER

Simplify ordering & layout design with the Williams Linear Product Builder at hew.com/product-builder

LUMEN PACKAGE ^[1]	COLOR	DISTRIBUTION	LEFT END TYPE	RIGHT END TYPE
L4 400lm	8TW Tunable white (80 CRI, 3000K-5000K)	G Graze	LWALL Wall	RWALL Wall
L7 700lm			LCAP Cap	RCAP Cap
L10 1,000lm			L90IN 90° inward L90OUT 90° outward	R90IN 90° inward R90OUT 90° outward

OPTIONS	DRIVER	VOLTAGE
EM/10WLP Low-profile 10-watt emergency battery ^[2]	DALI Driver prewired for DALI applications	120 120V 277 277V
EM/10WRM Remote mount 10-watt emergency battery ^[3]	DIM (1) 0-10V signal to control dimming (1) 0-10V signal to control CCT	UNV 120-277V
DG Diffuse graze acrylic lens	DMX Driver prewired for DMX applications	

NOTES

- ¹ Lumens per foot output based on 4000 CCT. Actual lumens per foot may vary +/-5%. See page 2 for FIXTURE PERFORMANCE DATA.
- ² Minimum 4' fixture; 120V-277V only.
- ³ Required for fixtures below 4'; 120V-277V only.



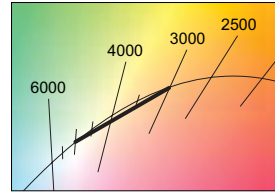
FIXTURE PERFORMANCE DATA

	DELIVERED LUMENS	WATTAGE PER FOOT	EFFICACY (lm/W)
L4	343	3.6	95.3
L7	600	6.5	92.3
L10	857	9.8	87.4

- Photometrics tested in accordance with IESNA LM-79. Results shown are based on 25°C ambient temperature.
- Wattage shown is average for 120V through 277V input.
- Results based on 4000K, 80 CRI, actual lumens may vary +/-5%
- Use multiplier table to calculate additional options.

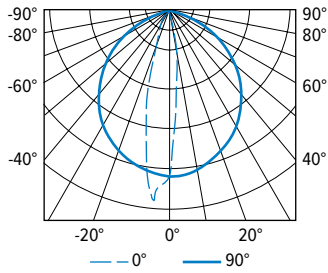
MULTIPLIER TABLE

CCT	CONVERSION FACTOR	
	LUMENS	WATTAGE
3000K	0.95	1.04
3500K	0.98	1.02
4000K	1.00	1.00
5000K	0.96	1.04



PHOTOMETRY

PXF-46-03'08-L10/8TW-G-LCAP/RCAP-DIM-UNV Total Luminaire Output: 3145 lumens; 36 Watts | Efficacy: 87.4 lm/W | 83 CRI; 3563K CCT

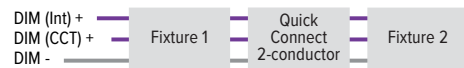


VERTICAL ANGLE	HORIZONTAL ANGLE					ZONAL LUMENS
	0°	45°	90°	135°	180°	
0	3964	3964	3964	3964	3964	3964
5	2000	2661	3952	4738	4557	326
15	444	812	3743	3214	2033	636
25	247	270	3399	1311	540	606
35	216	227	2923	498	320	531
45	218	196	2345	315	172	429
55	161	181	1657	150	108	325
65	92	117	907	82	64	203
75	36	49	246	36	26	78
85	3	7	20	3	0	11
90	0	0	0	0	0	0

LUMEN SUMMARY	ZONE	LUMENS	% FIXTURE
	0 - 30	1568	50
	0 - 40	2099	67
	0 - 60	2852	91
	0 - 90	3145	100
	0 - 180	3145	100

CONTROL DETAILS

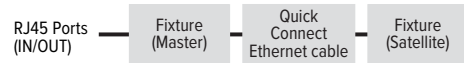
DIM



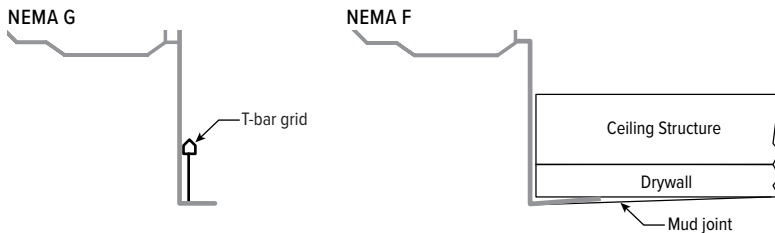
DALI



DMX



CEILING TYPE DETAILS



END TYPE DETAILS

