

CATALOG #: _____

TYPE: _____

PROJECT: _____

FEATURES

TrimLock® | TwistLock™

- High-output illumination for tall ceilings
- Support human-centric design with adaptive, individualized lighting using tunable white light
- Parallel the performance and style of the Williams downlight collection
- Precision illumination with 10° narrow to 65° wide optics
- Complement the architectural elements of any space with a multitude of housing, trim and cord finishes
- Limitless application opportunities via pendant, cable, wall and ceiling mounts
- Ensure a simple and secure installation with TwistLock™ surface mount technology

SPECIFICATIONS

- **HOUSING** – Extruded aluminum with die-cast aluminum accent ring.
- **FINISH** – Polyester powder coat bonded to phosphate-free, multi-stage pretreated metal. All parts painted after fabrication to facilitate installation, increase efficiency, and inhibit corrosion.
- **TRIMLOCK** – Innovative TrimLock® reflector retention system ensures trim remains secure.
- **OPEN REFLECTOR** – Low-iridescent anodized aluminum. Clear semi-specular finish standard.
- **LENSED TRIM** – Die-cast aluminum frame with micro-prismatic, tempered glass lens.
- **ELECTRICAL** – High-performance Class 2 LED array. Modular quick-connect plug for easy field-connection of LED light assembly to driver. Reported L70>50,000 hours. Tunable White products use LEDs of multiple CCTs and may produce a perceptibly different shade of white from single-CCT products at the same CCT. All CCTs are within 3 MacAdam ellipses.
- **MOUNTING** – Surface, cable, pendant, or wall mount. Indoor applications only. Max weight 14 lbs.
- **LISTINGS** –
 - cCSAus conforms to UL STD 1598 and UL STD 8750. Certified to CAN/CSA STD C22.2 No. 250.0. Suitable for damp locations.
- **WARRANTY** – 5-year limited warranty, see hew.com/warranty.

ORDERING EXAMPLE: 8CR - TL - L13/8TW - OPTIONS - WHT - DIM - UNV - OW - CS - TRIM OPTIONS - CM

HOUSING

SERIES	LUMENS [1]	COLOR	OPTIONS	HOUSING FINISH [2]	CONTROL [3]	VOLTAGE
8CR - TL	L13 1,300lm	8TW Tunable white (80 CRI, 2700K-5000K)	EM/10W 10-watt emergency battery [4]	ALUM Silver sparkle aluminum	DALI Driver prewired for DALI applications	UNV 120-277V
TrimLock	L23 2,300lm L42 4,200lm		F Fuse	BLK Textured black BRZ Textured bronze NKL Textured nickel SLV Textured silver WHT Textured white	DIM Dimming driver with (1) 0-10V signal to control dimming and (1) 0-10V signal to control CCT DMX Driver prewired for DMX applications [5] PSQ Lutron T-Series 2-channel tunable white 1%.	

TRIM

TRIM TYPE	DISTRIBUTION [6]	REFLECTOR FINISH [7]	TRIM OPTIONS
O Open reflector	W 65° Wide	Open Trim Types	AD Diffuse acrylic lens [10]
L Flush lens	M 35° Medium [8]	CS Clear semi-specular anodize	PD Diffuse 1/8" polycarbonate lens [11]
R Regressed lens	N 10° Narrow [9]	SG Satin-glow anodize	TD Diffuse polycarbonate lens media at top of open reflector [12]
		GD Gold anodize	
		CG Champagne gold anodize	
		PW Pewter anodize	
		SPC Clear specular anodize	
		RG Rose gold anodize	
		WH White texture powder coat	
		BL Black texture powder coat	
		Lens Trim Types	
		CS Clear semi-specular powder coat	
		WH White texture powder coat	
		BL Black texture powder coat	
		BZ Bronze texture powder coat	
		NK Nickel texture powder coat	
		SV Silver texture powder coat	
		AL Silver sparkle aluminum	

MOUNTING

MOUNTING TYPE [13]

- CM__ Adjustable aircraft cable mount, 24" length standard. Example: 24" cable = **CM24** [14]
- PM__ Pendant mount. Example: 24" pendant = **PM24** [15]
- SM TwistLock surface mount to octagonal J-box
- WM Wall mount

NOTES

- 1 Lumen output based on O trim type, W distribution and CS finish, 4000K/80CRI. Actual lumens may vary +/-5%, see page 2 for FIXTURE PERFORMANCE DATA
- 2 See page 4 for HOUSING FINISH DETAILS.
- 3 See page 4 for CONTROL DETAILS.
- 4 Increases fixture size. See page 4 for EMERGENCY BATTERY DETAILS.
- 5 CM Mounting Type only.
- 6 Beam angle based on O Trim Type and CS reflector finish. Trim Type affects beam angle. See page 2 for FIXTURE PERFORMANCE DATA.
- 7 See page 4 for REFLECTOR FINISH DETAILS.
- 8 Not available with L42 lumen stop when specified with L or R trim types.
- 9 Not available with L42 lumen stop when specified with L or R trim types.
- 10 Not available with O trim type. W distribution only.
- 11 Not available with O trim type. W distribution only.
- 12 O Trim Type only.
- 13 See page 3 for MOUNTING DETAILS.
- 14 48" and 96" lengths available. Canopy painted white unless specified otherwise. Must specify cord. See page 3 for CORD OPTIONS.
- 15 Specify length in 1" increments, minimum 6". Canopy and pendant match fixture housing color unless specified otherwise.

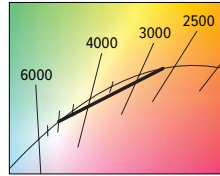
8CR tunable WHITE

8" Cylinder – Round

FIXTURE PERFORMANCE DATA

	DISTRIBUTION	WATTAGE	OPEN REFLECTOR TRIM TYPE		FLUSH LENS TRIM TYPE		REGRESSED LENS TRIM TYPE	
			DELIVERED LUMENS	EFFICACY (lm/W)	DELIVERED LUMENS	EFFICACY (lm/W)	DELIVERED LUMENS	EFFICACY (lm/W)
L13	W	14.6	1320	90.4	1135	78.0	1098	75.5
	M	14.6	1317	90.2	1220	83.6	1183	81.0
	N	14.6	1345	92.1	1231	84.5	1199	82.4
L23	W	24.0	2357	98.0	1964	81.7	1900	79.0
	M	24.0	2285	95.0	2117	88.0	2059	85.6
	N	24.0	2187	90.9	2129	88.5	2075	86.3
L42	W	44.9	4304	96.0	3596	80.2	3480	77.6
	M	44.9	4173	93.0	-	-	-	-
	N	44.9	3994	89.0	-	-	-	-

- ¹ Distribution will also be affected, consult factory.
- Photometrics tested in accordance with IESNA LM-79. Results shown are based on 25°C ambient temperature.
 - Wattage shown is based on 120V input.
 - Results based on 4000K, 80 CRI, actual lumens may vary +/-5%
 - Use multiplier tables to calculate additional options.



MULTIPLIER TABLES

COLOR TEMPERATURE		
CCT	LUMENS	WATTS
2700K	0.83	1.03
3000K	1.00	1.00
3500K	0.99	0.99
4000K	1.00	1.00
5000K	0.98	1.03

TRIM	
CATALOG NUMBER	CONVERSION FACTOR
AD	0.85
PD	0.85
TD	0.75

REFLECTOR FINISH	
CATALOG NUMBER	CONVERSION FACTOR
CS	1.00
SG ⁽¹⁾	0.92
GD	0.93
CG	0.96
PW	0.86
SPC	1.02
RG	0.88
WH ⁽¹⁾	0.89
BL ⁽¹⁾	0.47

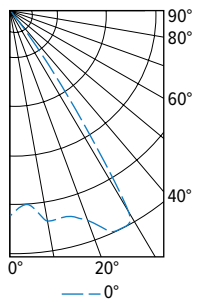
R TRIM	
CATALOG NUMBER	CONVERSION FACTOR
WH	1.00
CS ⁽¹⁾	0.98
BL ⁽¹⁾	0.79
BZ ⁽¹⁾	0.76
NK ⁽¹⁾	0.81
SV ⁽¹⁾	0.81
AL ⁽¹⁾	0.86

BEAM ANGLE

	TRIM TYPE		
	OPEN	FLUSH	REGRESSED
W	65°	55°	55°
M	35°	35°	35°
N	10°	25°	25°

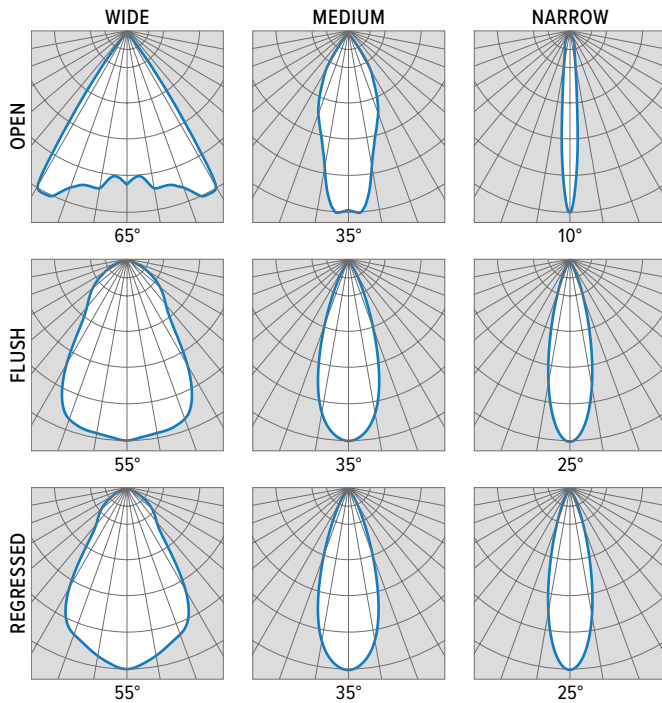
PHOTOMETRY

8CR-TL-L13/8TW-DIM-UNV-OW-CS Total Luminaire Output: 1320 lumens; 14.6 Watts | Efficacy: 90.4 lm/W | 80.0 CRI; 4000K CCT



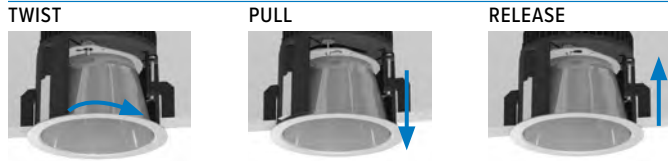
CANDLEPOWER DISTRIBUTION	VERTICAL ANGLE	HORIZONTAL ANGLE	ZONAL LUMENS
		0°	
	0	1110	
	5	1049	100
	15	1152	327
	25	1316	609
	35	401	252
	45	31	24
	55	9	8
	65	1	1
	75	0	0
	85	0	0
	90	0	0

LUMEN SUMMARY	ZONE	LUMENS	% FIXTURE
	0 - 40	1288	98
	0 - 60	1320	100
	0 - 90	1320	100
	0 - 180	1320	100

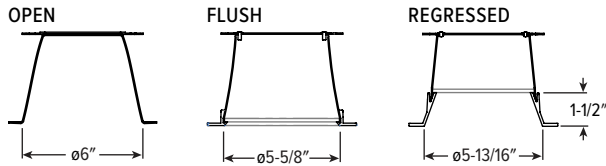


8CR tunable WHITE 8" Cylinder – Round

TRIMLOCK DETAILS



TRIM TYPE DETAILS



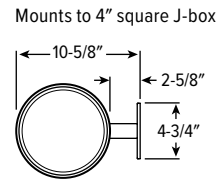
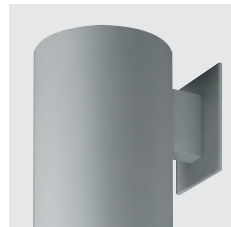
MOUNTING DETAILS

PENDANT MOUNT (PM__)



- Swivel pendant mount fixtures are provided with:
- 45° Swivel canopy
 - 3/8" IPS Threaded stem
 - Specify length of stem, 6" minimum, 24" default length

WALL MOUNT (WM)



SURFACE MOUNT (SM)



TwistLock™
Simple lift-and-twist mounting secures fixture to J-box.

CABLE MOUNT (CM__)



- Cable mount fixtures are provided with:
- Adjustable length aircraft cable, must specify length in inches
 - 18-gauge cord in choice of 9 colors, see Cord Options for ordering info.
 - One 5" canopy
 - T-bar clip with 1/4-20 stud
 - Hard ceiling anchor provided by others

CORD OPTIONS

Must specify cord when cable mounting.

ORDERING EXAMPLE: S2438/W				
CORD TYPE	LENGTH	# CONDUCTORS	WIRE SIZE	COLOR
S Straight	24 24"	3 3	8 18-gauge	Standard
	48 48"	4 4 ⁽¹⁾		/W White
	96 96"	5 5		/B Black
		6 6 ⁽¹⁾		Braided
				/WH White
				/BL Black
				/BR Brass
				/AE Aegean Blue
				/RE Red
				/SV Silver
				/GU Gunmetal
				/NK Nickle
				/GR Gray

¹ Standard cord only.

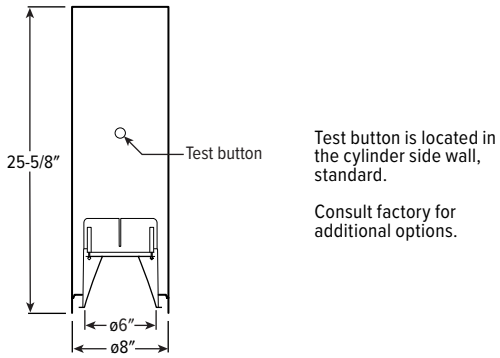
COLOR DETAILS

Additional colors may be available, consult factory.



8CR tunable WHITE 8" Cylinder – Round

EMERGENCY BATTERY DETAILS



CONTROL DETAILS

DIM



DALI



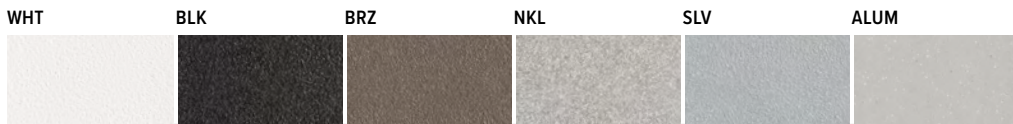
DMX



LUTRON T-SERIES



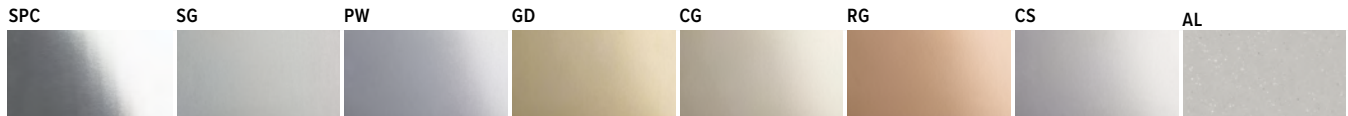
HOUSING FINISH DETAILS



For custom color, please specify RAL code or a manufacturer code with description. All custom colors other than RAL require two sample swatches, minimum 1" square.

REFLECTOR FINISH DETAILS

SMOOTH FINISH



TEXTURED FINISH

