

CATALOG #: _____

TYPE: _____

PROJECT: _____

FEATURES

- Williams turn-key Power over Ethernet (PoE) solution provides plug-and-play networked lighting and control
- Tunable white from 3000K to 5000K CCT, minimum 80 CRI.
- Backlit curved lens provides uniform illumination for visual comfort
- Available with decorative inserts to customize center lens
- Distinct curved deep center detail creates a highly-aesthetic presence
- Maximize energy savings with efficacies as high as 128 lm/w
- Optional gasketed acrylic lens helps protect against contaminants
- Made Right Here™ in the USA

SYSTEM REQUIREMENTS

- Lighting system (site software)
- Gateway or alternate server (runs software)
- PoE switches or Ethernet switches and mid-span power injectors
- See hew.com/poe for details

SPECIFICATIONS

- HOUSING** – Precision die-formed 22-gauge C.R.S.
- DOOR FRAME** – Hinged, flat, extruded aluminum door frame with optical assembly.
- SHIELDING** – Diffuse polycarbonate lens and acrylic center standard.
- FINISH** – 95% reflective white polyester powder coat bonded to phosphate-free, multi-stage pretreated metal. All parts painted after fabrication to facilitate installation, increase efficiency, and inhibit corrosion.
- ELECTRICAL** – High quality mid-power LED boards. L70 >50,000 hours per IES TM-21. Low-voltage DC fixture, to be fed by Class 2 power supply. Tunable White products use LEDs of multiple CCTs and may produce a perceptibly different shade of white from single-CCT products at the same CCT. All CCTs are within 3 MacAdam ellipses.
- MOUNTING** – NEMA Type “G” standard, NEMA Type “F” available.
- LISTINGS** –
 - cCSAus certified as luminaire suitable for dry or damp locations.
- WARRANTY** – 5-year limited warranty, see hew.com/warranty.

ORDERING EXAMPLE: ATS2 - 2 4 - P58/835 - D - OPTIONS - POE N

ORDERING INFO

SERIES	WIDTH	LENGTH	LUMENS ^[1]	CRI	CCT	SHIELDING	
ATS2	1 1'	2 2' ^[2]	2x2	8 80	27 2700K	D Diffuse matte acrylic center	
		4 4'	P16 1,600lm	9 90 ^[3]	30 3000K	P Perforated center ^[4]	
	2 2'	4 4'	P25 2,500lm	P52 5,200lm	2x4	35 3500K	DECORATIVE INSERTS ^[5]
			40 4000K				
			50 5000K				
			TW Tunable white (80 CRI, 3000K-5000K)				
			P27 2,700lm	P58 5,800lm	P100 10,000lm	D11 Triple wave	
			P58 5,800lm			D12 Brushed metal	
			P100 10,000lm			D13 Elliptical Perf	
						D15 Stripes	
						D16 Tri-Pyramid	

OPTIONS ^[6]

- EM/CP12** Remote mount 12-watt Iota emergency battery ^[8]
- SS** Gasketed clear flat acrylic lens
- AMW** Anti-microbial white finish

CONTROL ^[7]

- POE N** Power over Ethernet network node
- POE D** Power over Ethernet device node ^[9]

NOTES

- Lumen output based on 3500K for single CCT and 4000K for TW. Actual lumens may vary +/-5%. See page 2 for FIXTURE PERFORMANCE DATA.
- 2' width only
- Extended lead times may apply. Consult factory for availability. Not available with Tunable White.
- Decreases lumen output by 15%
- Only available with D shielding option. See page 3 for DIFFUSE CENTER DECORATIVE INSERT DETAILS.
- See page 3 for FINISH OPTIONS. See hew.com/poe for compatible sensors & switches
- 1'x4' fixture requires remote mounting. See page 3 for REMOTE MOUNT DETAILS. For additional PoE info, see hew.com/poe
- Requires one additional category cable run to switch. See page 3 for REMOTE MOUNT DETAILS.
- Not available for fixtures over 40W



ATS2 PoE | tunable WHITE

Architectural Surface – Curved Deep Center

FIXTURE PERFORMANCE DATA

STANDARD

	LED PACKAGE	DELIVERED LUMENS	WATTAGE	EFFICACY (lm/W)
2x2	P16	1698	14.4	117.9
	P25	2581	23.2	111.5
	P52	5397	46.9	115.2
2x4	P27	2798	21.7	128.9
	P58	5918	47.5	124.7
	P100 ¹	10250	81.2	126.3

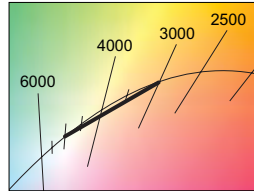
TUNABLE WHITE

	LED PACKAGE	DELIVERED LUMENS	WATTAGE	EFFICACY (lm/W)
2x2	P16	1653	15.4	107.1
	P25	2582	25.1	102.9
	P52	5381	50.1	107.5
2x4	P27	2771	24.2	114.4
	P58	5952	49.8	119.5
	P100 ¹	10271	95.2	107.8

MULTIPLIER TABLE

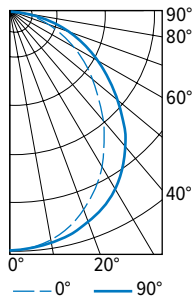
	COLOR TEMPERATURE		
	CCT	LUMENS	
		STANDARD	TUNABLE WHITE
80 CRI	2700K	0.97	-
	3000K	0.99	0.95
	3500K	1.00	0.98
	4000K	1.03	1.00
	5000K	1.06	0.96
90 CRI	2700K	0.80	-
	3000K	0.82	-
	3500K	0.83	-
	4000K	0.86	-
	5000K	0.89	-

- Photometrics tested in accordance with IESNA LM-79. Results shown are based on 25°C ambient temperature.
- Standard results based on 3500K standard, 80 CRI, actual lumens may vary +/-5%
- Tunable white results based on 4000K standard, 80 CRI, actual lumens may vary +/-5%
- Use multiplier tables to calculate additional options.
- ¹ Fixture contains two nodes, one power drop per node required.



PHOTOMETRY

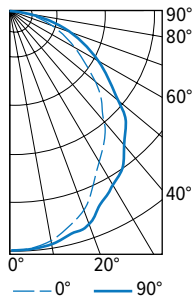
ATS2-22-P52/835-D Total Luminaire Output: 5397 lumens; 47 Watts | Efficacy: 115 lm/W | 82 CRI; 3500K CCT



VERTICAL ANGLE	HORIZONTAL ANGLE			ZONAL LUMENS
	0°	45°	90°	
0	2124	2124	2124	
5	2120	2112	2109	200
15	2001	2007	2043	568
25	1762	1831	1915	845
35	1478	1577	1685	985
45	1139	1240	1339	959
55	812	918	986	814
65	529	619	680	605
75	269	341	394	346
85	49	43	41	73
90	0	0	0	

LUMEN SUMMARY	ZONE	LUMENS	% FIXTURE
	0 - 30	1613	30
	0 - 40	2599	48
	0 - 60	4372	81
	0 - 90	5397	100
	0 - 180	5397	100

ATS2-24-P58/835-D Total Luminaire Output: 5918 lumens; 48 Watts | Efficacy: 125 lm/W | 82 CRI; 3500K CCT



VERTICAL ANGLE	HORIZONTAL ANGLE			ZONAL LUMENS
	0°	45°	90°	
0	2358	2358	2358	
5	2345	2346	2348	223
15	2213	2232	2261	629
25	1915	1977	2052	914
35	1551	1660	1769	1041
45	1250	1397	1490	1050
55	864	1001	1065	884
65	578	706	758	676
75	301	412	412	403
85	90	64	60	99
90	0	0	0	

LUMEN SUMMARY	ZONE	LUMENS	% FIXTURE
	0 - 30	1766	30
	0 - 40	2807	47
	0 - 60	4740	80
	0 - 90	5918	100
	0 - 180	5918	100

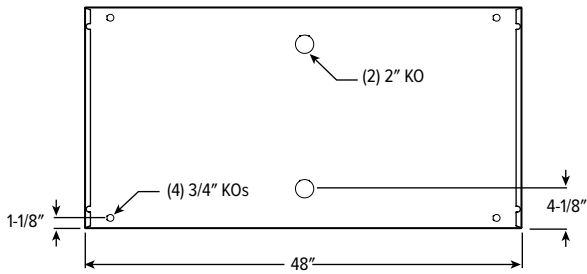


ATS2 PoE | tunable **WHITE** Architectural Surface – Curved Deep Center

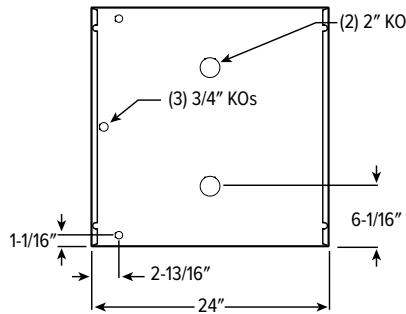
FIXTURE DETAILS

BACKVIEW

2x4



2x2

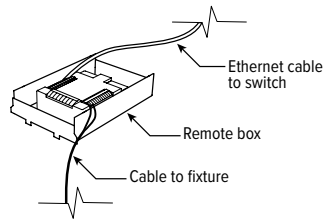


REMOTE MOUNT DETAILS

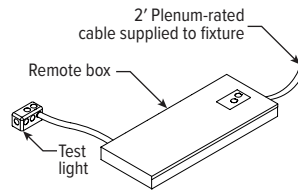
Includes 2' plenum-rated 18ga. solid cable. Remote box can be installed in:

- Above ceiling grid
- Remote closet (within 100ft)
- Surface below ceiling

NODE



NODE AND EM OPTION



DIFFUSE CENTER DECORATIVE INSERT DETAILS

TRIPLE WAVE



BRUSHED METAL



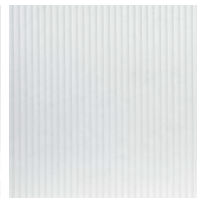
ELLIPTICAL PERF



CIRCLES



STRIPES



TRI-PYRAMID



FINISH OPTIONS

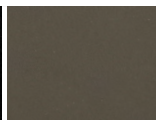
WHITE



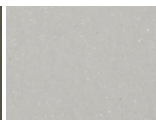
BLACK



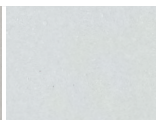
BRONZE



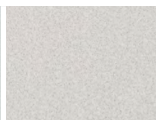
NICKEL



SILVER



ALUMINUM



For custom color, please specify RAL code or a manufacturer code with description. All custom colors other than RAL require two sample swatches, minimum 1" square.

