

AX2D

CATALOG #: \_\_\_\_\_

TYPE: \_\_\_\_\_

PROJECT: \_\_\_\_\_

## FEATURES

- Williams turn-key Power over Ethernet (PoE) solution provides plug-and-play networked lighting and control.
- Tunable white from 3000K to 5000K CCT, minimum 80 CRI
- Sleek, slim architectural design provides direct or indirect light
- Slightly wrapped lens creates glowing edge and smooth illumination
- Attractive source of direct or indirect lighting for use in offices, hallways, conference rooms and medical facilities
- Made Right Here<sup>®</sup> in the USA

## SYSTEM REQUIREMENTS

- Lighting system (site software)
- Gateway or alternate server (runs software)
- PoE switches or Ethernet switches and mid-span power injectors
- See [hew.com/poe](http://hew.com/poe) for details

## SPECIFICATIONS

- HOUSING** – Extruded aluminum.
- SHIELDING** – Frosted acrylic lens.
- FINISH** – Matte, smooth silver sparkle standard. All other colors default to textured finish. Polyester powder coat bonded to phosphate-free, multi-stage pretreated metal. All parts painted after fabrication to facilitate installation, increase efficiency, and inhibit corrosion.
- ELECTRICAL** – High quality mid-power LED board. L70 > 60,000 hours per IES TM-21. Low-voltage DC fixture, to be fed by Class 2 power supply. Tunable White products use LEDs of multiple CCTs and may produce a perceptibly different shade of white from single-CCT products at the same CCT. All CCTs are within 3 MacAdam ellipses.
- MOUNTING** – Suspended. 1/16" diameter adjustable steel leveling aircraft cable and mounting hardware necessary for grid ceiling applications provided.
- LISTINGS** –
  - cETLus conforms to UL STD 1598 and UL STD 8750. Certified to CAN/CSA STD C22.2 No. 250.0. Suitable for damp locations.
- WARRANTY** – 5-year limited warranty, see [hew.com/warranty](http://hew.com/warranty).

## ORDERING EXAMPLE: AX2U - 4 - P23/835 - S - AC/D48 - OPTIONS - POE N

### ORDERING INFO

| SERIES    | LENGTH | LUMENS <sup>[1]</sup> | CRI                 | CCT                                     | FIXTURE TYPE                      |
|-----------|--------|-----------------------|---------------------|---|-----------------------------------|
| AX2D Down | 2 2'   | 2'                    | 8 80                | 30 3000K                                | F Feeder unit <sup>[3]</sup>      |
| AX2U Up   | 4 4'   | P14 1,400lm           | 9 90 <sup>[2]</sup> | 35 3500K                                | J Joiner unit <sup>[4]</sup>      |
|           | 8 8'   | 4'                    |                     | 40 4000K                                | S Stand-alone unit <sup>[5]</sup> |
|           |        | P23 2,300lm           |                     | 50 5000K                                |                                   |
|           |        | 8'                    |                     | 8TW Tunable white (80 CRI, 3000K-5000K) |                                   |
|           |        | P47 4,700lm           |                     |   |                                   |

### MOUNTING (EXAMPLE: AC/D48)<sup>[6]</sup>

| Prefix | Type                | Length |
|--------|---------------------|--------|
| AC/    | D 1" grid & hardpan | 24 24" |
|        | N 9/16" grid        | 48 48" |
|        | S Slot grid         | 96 96" |

### OPTIONS<sup>[7]</sup>

| EM/CP12 | Remote mount 12-watt lora emergency LED battery <sup>[9]</sup> |
|---------|--|
|         |  |

### CONTROL<sup>[8]</sup>

| POE N | Power over Ethernet network node                |
|-------|---|
| POE D | Power over Ethernet device node <sup>[10]</sup> |
|       |   |

## NOTES

- Nominal lumen output based on 3500K for single CCT and 4000K for TW. See page 2 for FIXTURE PERFORMANCE DATA.
- Extended lead times may apply. Consult factory for availability. Not available with tunable white.
- Straight white cord standard, two end plates, field installed.
- Straight white cord standard, no end plates.
- Straight white cord standard, two end plates installed
- See page 3 for MOUNTING DETAILS.
- See [hew.com/poe](http://hew.com/poe) for compatible sensors & switches. See page 3 for FINISH OPTIONS.
- Node requires remote mounting. See page 3 for REMOTE MOUNT DETAILS.
- Requires one additional category cable run to switch. See page 3 for REMOTE MOUNT DETAILS.
- Not available for fixtures over 40W.



# AX2<sup>PoE</sup> | tunable WHITE 2" Suspended Architectural

## FIXTURE PERFORMANCE DATA

### STANDARD

|    | LED PACKAGE | DELIVERED LUMENS | WATTAGE | EFFICACY (lm/W) |
|----|-------------|------------------|---------|-----------------|
| 2" | P14         | 1405             | 14.3    | 98.5            |
| 4" | P23         | 2304             | 23.0    | 100.3           |
| 8" | P47         | 4734             | 44.6    | 106.1           |

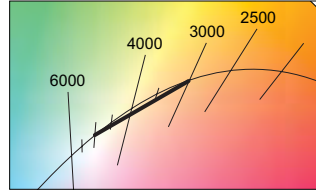
### TUNABLE WHITE

|    | LED PACKAGE | DELIVERED LUMENS | WATTAGE | EFFICACY (lm/W) |
|----|-------------|------------------|---------|-----------------|
| 2" | P14         | 1413             | 15.9    | 89.0            |
| 4" | P23         | 2302             | 25.6    | 90.1            |
| 8" | P47         | 4717             | 50.2    | 94.0            |

### MULTIPLIER TABLES

|        | STANDARD |                   |
|--------|----------|-------------------|
|        | CCT      | CONVERSION FACTOR |
| 80 CRI | 2700K    | 0.97              |
|        | 3000K    | 0.99              |
|        | 3500K    | 1.00              |
|        | 4000K    | 1.03              |
|        | 5000K    | 1.06              |

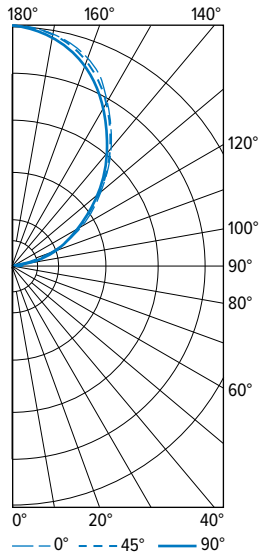
|        | TUNABLE WHITE |                   |
|--------|---------------|-------------------|
|        | CCT           | CONVERSION FACTOR |
| 80 CRI | 3000K         | 0.95              |
|        | 3500K         | 0.98              |
|        | 4000K         | 1.00              |
|        | 5000K         | 0.96              |



- Photometrics tested in accordance with IESNA LM-79. Results shown are based on 25°C ambient temperature.
- Standard results based on 3500K, 80CRI, actual lumens may vary +/-5%.
- Tunable white results based on 4000K, 80 CRI, actual lumens may vary +/-5%.
- Use multiplier tables to calculate additional options.

## PHOTOMETRY

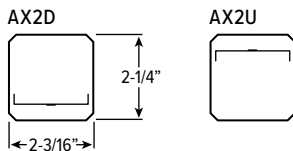
AX2U-4-P23/835-S Total Luminaire Output: 2304 lumens; 23 Watts | Efficacy: 100 lm/W | 84 CRI; 3483K CCT



| VERTICAL ANGLE | HORIZONTAL ANGLE |     |     | ZONAL LUMENS |
|----------------|------------------|-----|-----|--------------|
|                | 0°               | 45° | 90° |              |
| 0              | 0                | 0   | 0   |              |
| 5              | 0                | 0   | 0   | 0            |
| 15             | 0                | 0   | 0   | 0            |
| 25             | 0                | 0   | 0   | 0            |
| 35             | 0                | 0   | 0   | 0            |
| 45             | 0                | 0   | 8   | 2            |
| 55             | 0                | 6   | 13  | 6            |
| 65             | 0                | 9   | 20  | 10           |
| 75             | 0                | 14  | 28  | 15           |
| 85             | 1                | 18  | 33  | 21           |
| 90             | 6                | 26  | 45  |              |
| 95             | 28               | 48  | 69  | 57           |
| 105            | 119              | 127 | 145 | 140          |
| 115            | 235              | 233 | 237 | 237          |
| 125            | 371              | 364 | 349 | 328          |
| 135            | 514              | 501 | 486 | 391          |
| 145            | 657              | 651 | 629 | 407          |
| 155            | 796              | 783 | 767 | 360          |
| 165            | 877              | 871 | 856 | 245          |
| 175            | 917              | 917 | 913 | 87           |
| 180            | 924              | 924 | 924 |              |

| LUMEN SUMMARY | ZONE   | LUMENS | % FIXTURE |
|---------------|--------|--------|-----------|
|               | 0 - 30 | 0      | 0         |
| 0 - 40        | 0      | 0      |           |
| 0 - 60        | 8      | 0      |           |
| 0 - 90        | 53     | 2      |           |
| 90 - 120      | 433    | 19     |           |
| 90 - 150      | 1559   | 68     |           |
| 90 - 180      | 2251   | 98     |           |
| 0 - 180       | 2304   | 100    |           |

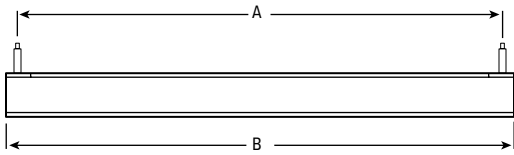
## CROSS SECTIONS



# AX2<sup>PoE</sup> | tunable WHITE 2" Suspended Architectural

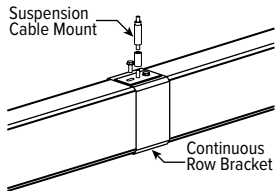
## MOUNTING DETAILS

### SIDE VIEW



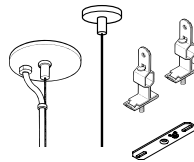
| NOMINAL LENGTH | MOUNTING LENGTH (A) | ACTUAL LENGTH (B) |
|----------------|---------------------|-------------------|
| 2'             | 24-5/8"             | 25-7/8"           |
| 4'             | 46-13/16"           | 48-1/16"          |
| 8'             | 89-7/8"             | 91-1/8"           |

### CONTINUOUS ROW FIXTURES



When row mounting fixtures, joint between fixtures will be visible at 4' or 8' intervals depending on fixture length.

### STANDARD HARDWARE (Grid & Hardpan)



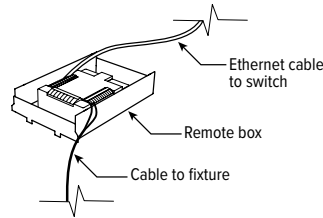
- Fixtures are provided with adjustable length aircraft cables and mounting hardware, must specify.
- Electrical supply is brought into the feeder fixture, either as part of a row or as a stand-alone unit. One power drop per node required.

## REMOTE MOUNT DETAILS

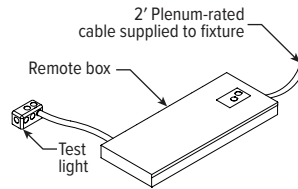
Includes 2' plenum-rated 18ga. solid cable. Remote box can be installed in:

- Above ceiling grid
- Remote closet (within 100ft)
- Surface below ceiling

### NODE

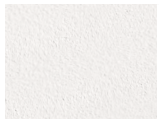


### NODE AND EM OPTION

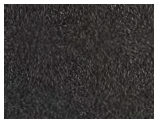


## FINISH OPTIONS

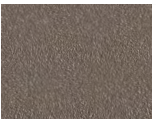
### WHITE



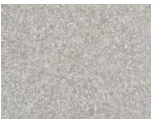
### BLACK



### BRONZE



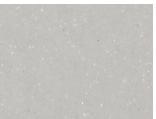
### NICKEL



### SILVER



### ALUMINUM



For custom color, please specify RAL code or a manufacturer code with description. All custom colors other than RAL require two sample swatches, minimum 1" square.

