

CATALOG #: _____

TYPE: _____

PROJECT: _____



FEATURES

- Support human-centric design with adaptive, individualized lighting using tunable white light
- Contoured housing, end caps and louver provide an attractive source of direct lighting
- Efficacies up to 102 lm/W
- Design elements on side panels add interest while producing subtle uplight
- Moveable mounting hardware slides easily along the length of the fixture providing variable mounting points
- Heavy-duty construction features extruded aluminum housing and die-cast end caps
- Contoured aluminum louvers improve aesthetics while shielding LEDs from view
- White louver finish improves fixture efficiency
- Made Right Here® in the USA

SPECIFICATIONS

- HOUSING** – Extruded aluminum with die-cast end caps.
- SHIELDING** – Highly reflective white curved baffle louver with matte white acrylic overlay.
- FINISH** – Textured matte white polyester TGIC powder coat bonded to phosphate-free, multi-stage pretreated metal. All parts painted after fabrication to facilitate installation, increase efficiency, and inhibit corrosion.
- ELECTRICAL** – High-quality mid-power LED board. L70 > 50,000 hours per IES TM-21. Tunable White products use LEDs of multiple CCTs and may produce a perceptibly different shade of white from single-CCT products at the same CCT. All CCTs are within 3 MacAdam ellipses.
- MOUNTING** – Suspended. 1/16" diameter x 24" adjustable steel leveling aircraft cable and mounting hardware necessary for grid ceiling applications provided.
- LISTINGS** –
 - cCSAus certified as luminaire suitable for dry or damp locations.
 - Complies with the Buy American Act and other federal regulations. Request certification at hew.com/baa.
- WARRANTY** – 5-year limited warranty, see hew.com/warranty.

ORDERING EXAMPLE: AXA - 4 - L14/8TW - LVRS - AC/D48 - OPTIONS - DIM - UNV

ORDERING INFO

SERIES	NOMINAL LENGTH	LUMENS ⁽¹⁾	CRI	CCT
AXA	Stand-alone: 4' & 8' nominal lengths, fixture ships assembled	L8 800	8 80	TW Tunable white (3000K-5000K)
	Example: 4 = 4'	L14 1,400	9 90 ⁽²⁾	TW2 Tunable white (2700K-6500K)
	Row-mount: Lengths specified in 4' increments			
	Example: 12 = 12'			
Product Builder Simplify ordering & layout design with the Williams Linear Product Builder at hew.com				

SHIELDING	MOUNTING (EXAMPLE: AC/D48) ⁽³⁾			OPTIONS
LVRS Slotted uplight (3%)	Prefix	Type	Length	See page 3 for <i>FINISH OPTIONS</i> .
LVRD Linear dot uplight (3%)	AC/	D 1" grid & hardpan	24 24"	EM/10WRM Remote mount 10-watt emergency battery ⁽⁴⁾
LVRC Closed side panels		N 9/16" grid	48 48"	EM/10WLP Low-profile 10-watt emergency battery ⁽⁵⁾
		S Slot grid	96 96"	(L__) Additional lower lumen packages available. ⁽⁶⁾
				Example: 1,000 nominal lumens = AXA-4-L14/8TW-LVRS-(L10).

DRIVER	VOLTAGE
DALI Driver prewired for DALI applications	120 120V
DIM (1) 0-10V signal to control dimming	277 277V
(1) 0-10V signal to control CCT	UNV 120-277V
DMX Driver prewired for DMX applications	
PSQ Lutron T-Series 2-channel tunable white 1%.	

NOTES

- Lumens per foot output based on LVRS Shielding, 80 CRI/4000K CCT. Actual performance may vary +/-5%, see page 2 for *FIXTURE PERFORMANCE DATA*. Additional lumen packages available, see *Options*.
- Extended lead times may apply. Consult factory for availability.
- See page 3 for *MOUNTING DETAILS*.

- 4' only. See page 2 for *FIXTURE DETAILS*.
- 8' only. Additional lumen packages available, see *options*.
- (L5) lumen package minimum. Specify in increments of 100 nominal lumens. Option must be specified with next higher lumen package.



AXA tunable WHITE Architectural Contoured Louver

FIXTURE PERFORMANCE DATA

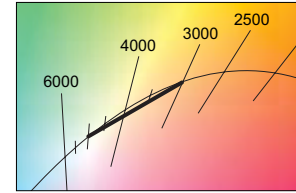
	LED PACKAGE/FOOT	DELIVERED LUMENS	WATTAGE	EFFICACY (lm/W)
4'	L8	3148	31.0	102
	L14	5312	55.8	95
8'	L8	6185	60.8	102
	L14	10626	111.5	95

- Photometrics tested in accordance with IESNA LM-79. Results based on LVRS shielding, 80 CRI/4000K CCT, average wattage for 120V through 277V input, and 25°C ambient temperature. Actual performance may vary +/-5%.
- To calculate lumen output in emergency mode, multiply the battery wattage by the efficacy.
- Use multiplier table to calculate additional options.

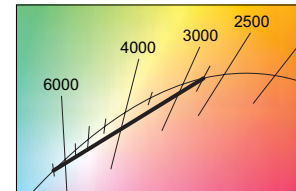
MULTIPLIER TABLE

		COLOR TEMPERATURE			
	CCT	TW		TW2	
		LUMENS	WATTAGE	LUMENS	WATTAGE
80 CRI	2700K	—	—	0.93	1.02
	3000K	0.95	1.04	0.95	1.01
	3500K	0.98	1.02	0.98	1.00
	4000K	1.00	1.00	1.00	1.00
	5000K	0.96	1.04	1.02	1.00
	6500K	—	—	1.01	1.04
90 CRI	2700K	—	—	0.81	1.02
	3000K	0.83	1.04	0.83	1.01
	3500K	0.86	1.02	0.86	1.00
	4000K	0.88	1.00	0.88	1.00
	5000K	0.84	1.04	0.89	1.00
	6500K	—	—	0.88	1.04

TW

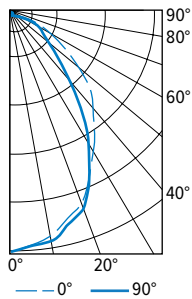


TW2



PHOTOMETRY

AXA-4-L14/8TW-LVRS-DIM-UNV Total Luminaire Output: 5312 lumens; 55.8 Watts | Efficacy: 95.0 lm/W | 80 CRI; 4000K CCT

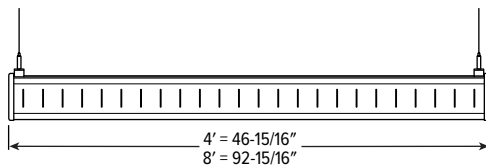


	VERTICAL ANGLE	HORIZONTAL ANGLE			ZONAL LUMENS
		0°	45°	90°	
CANDLEPOWER DISTRIBUTION	0	2484	2484	2484	
	5	2421	2425	2437	230
	15	2231	2251	2302	635
	25	1917	1927	2000	900
	35	1594	1587	1655	1006
	45	1294	1256	1292	963
	55	877	811	771	727
	65	514	435	377	438
	75	220	187	175	212
	85	63	58	61	70
	90	6	16	22	
	95	0	12	18	14
	105	2	14	20	15
	115	7	20	23	18
	125	9	25	26	19
	135	16	28	29	20
	145	23	29	29	18
	155	26	32	33	15
	165	31	38	38	10
	175	34	34	32	3
	180	32	32	32	

	ZONE	LUMENS	% FIXTURE
LUMEN SUMMARY	0 - 30	1766	33
	0 - 40	2772	52
	0 - 60	4461	84
	0 - 90	5181	98
	90 - 130	46	1
	90 - 150	103	2
	90 - 180	131	3
	0 - 180	5312	100

FIXTURE DETAILS

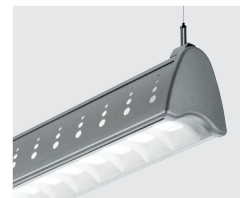
SIDE VIEW



LVRS



LVRD

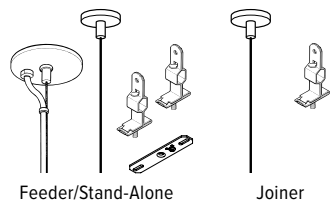


LVRC



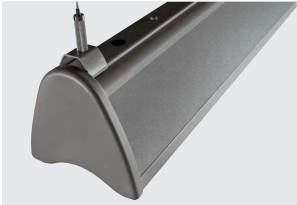
MOUNTING DETAILS

STANDARD HARDWARE FOR SUSPENDED PRODUCT (Grid and Hardpan)



- Notes:
- Fixtures are provided with adjustable length aircraft cables and mounting hardware, must specify.
 - Electrical supply is brought into the feeder fixture, either as part of a row or as a stand-alone unit. Joiner fixtures complete the row.
 - The feeder kits are standard with a 5" canopy to cover the junction box and a 2" canopy at the non-feed point. No I-box is required at non-feed points.

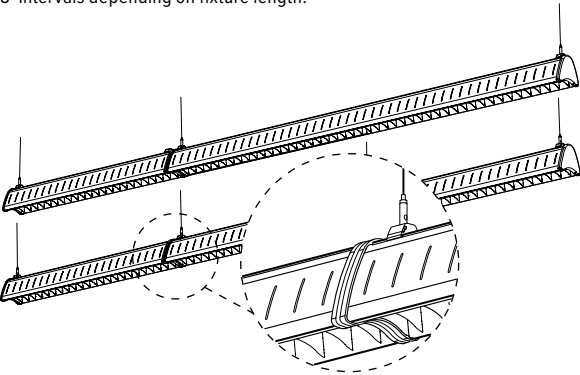
AIRCRAFT CABLE



Mounting brackets can be positioned anywhere along the length of the fixture housing. It is recommended to locate mounting brackets no more than 8" away from the end plates of the fixture.

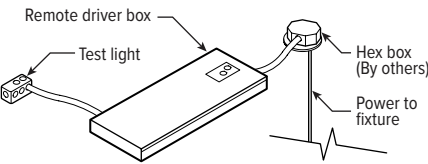
CONTINUOUS ROW FIXTURES

When row mounting fixtures, joint between fixtures will be visible at 4' and 8' intervals depending on fixture length.

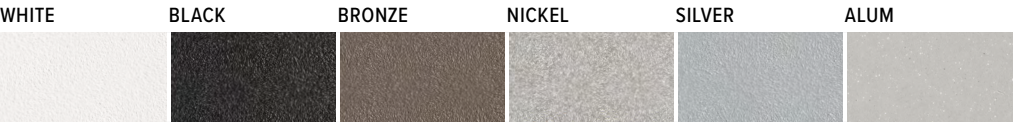


REMOTE MOUNT BATTERY

Max remote distance 50'.



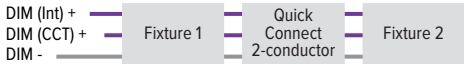
FINISH OPTIONS



For custom color, please specify RAL code or a manufacturer code with description. All custom colors other than RAL require two sample swatches, minimum 1" square.

CONTROL DETAILS

DIM



DMX



DALI



LUTRON T-SERIES

