

ADJUSTABLE COMPACT LED EMERGENCY LIGHT

EMER/CP/ADJ/LED

CATALOG #:

TYPE:

PROJECT:

NOTES:

EXAMPLE

EMER/CP/ADJ/LED - WHT - D

SERIES

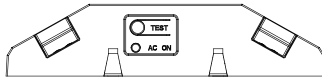
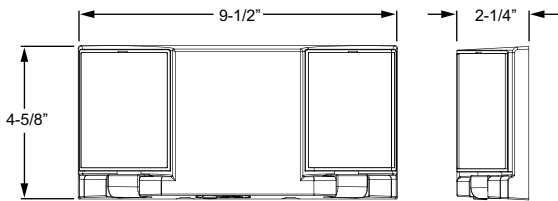
HOUSING
COLOR

VOLTAGE

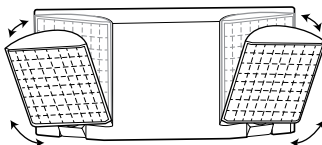
LED



CROSS SECTIONS



Bottom View



Adjustable lamp heads

FEATURES

- ▶ 3.6V long-life, maintenance-free, rechargeable NiCd battery provides 90 minutes of emergency operation.
- ▶ Fully automatic solid-state system recharges battery in 24 hours.
- ▶ Long-life, efficient, ultra-bright white LED lamp heads.
- ▶ Built-in test switch.
- ▶ Charge rate/power on LED indicator light.
- ▶ Two adjustable LED lamp heads provide optimal center-to-center spacing.
- ▶ High-performance chrome-plated metalized reflector and plastic lens for optimal light distribution.

ORDERING INFORMATION

SERIES

EMER/CP/ADJ/LED Adjustable Compact LED Emergency Light

ACCESSORIES (Shipped separately)

See back for details.
PC3 Polycarbonate shield
WG Wireguard

HOUSING COLOR (Must specify)

BLK Black
WHT Industry-standard white

VOLTAGE

D 120V or 277V
SV__ Special voltage, consult factory for options

LED

SPECIFICATIONS

Housing – Injection-molded, engineering-grade, 5VA flame retardant, high-impact resistant, thermoplastic.

Electrical – Universal voltage, 120 or 277 VAC operation.

Mounting – Wall or ceiling mount. Top and side knockout for conduit applications.

Labels – Listed to UL 924 standard as an emergency light suitable for dry or damp locations (0°C - 50°C). Meets NFPA 101 Life Safety Code, NEC, OSHA, Local and State Codes.

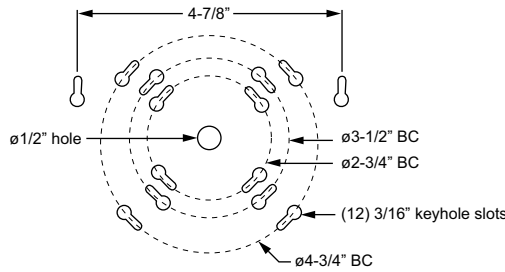
Warranty – 5-year limited warranty

ELECTRICAL INFORMATION

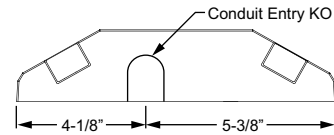
Catalog Number	Input Watts (W)		Input Amps (A)	
	120V	277V	120V	277V
EMER/CP/ADJ/LED	2.1	2.1	0.025	0.01

FIXTURE DETAILS

BOLT CIRCLE PATTERN



TOP VIEW



ACCESSORIES

