

LED EMERGENCY LIGHT

EMER/LED

CATALOG #:	TYPE:
PROJECT:	NOTES:

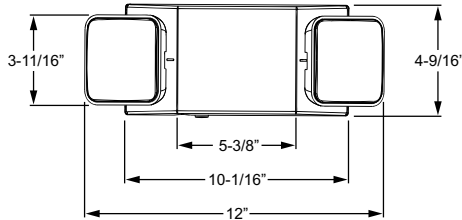
LED

EXAMPLE **EMER/LED - WHT - OPTIONS - D**

SERIES
HOUSING COLOR
OPTIONS/ ACCESSORIES
VOLTAGE



CROSS SECTIONS



ORDERING INFORMATION

SERIES	
EMER/LED	LED Emergency Light
HOUSING COLOR	
BLK	Black
WHT	Industry-standard white

OPTIONS	
HL	1.5-watt high lumen lamp heads
SDT	Self-diagnostic test
RC	Remote capable
ACCESSORIES (Shipped separately)	
See back for details.	
PC3	Polycarbonate shield
WG	Wireguard
VOLTAGE	
D	120V or 277V
SV__	Special voltage, consult factory for options (not available with SDT).

FEATURES

- ▶ 3.6V long-life, maintenance-free, NiCd battery provides 90 minutes of emergency operation.
- ▶ Long lasting, efficient ultra-bright white LED lamp heads.
- ▶ High-performance chrome-plated metalized reflector and plastic lens for optimal light distribution.
- ▶ 1 watt per LED head.
- ▶ Adjustable LED lamp heads provide optimal center-to-center spacing. Optional high-lumen heads are available for increased center-to-center spacing.
- ▶ Fully automated solid-state, two-rate charger indicates battery charging to recharge a discharge battery in 24 hours.
- ▶ Built-in test switch.
- ▶ Charge rate/power on LED indicator light.

LED

SPECIFICATIONS

Housing – Injection-molded, engineering-grade, 5VA flame retardant, high-impact resistant, thermoplastic.

Electrical – Universal voltage, 120 or 277 VAC operation.

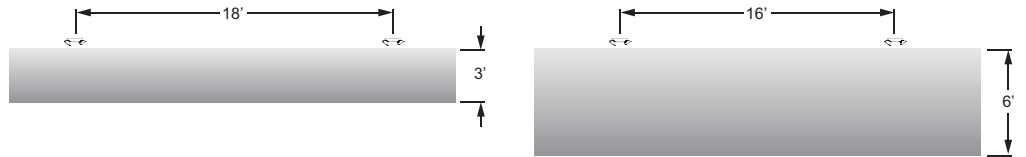
Mounting – Wall or ceiling mount. Top and side knockout for conduit applications.

Labels – Listed to UL 924 standard as an emergency light suitable for dry or damp locations (0°C - 50°C). Meets NFPA 101 Life Safety Code, NEC, OSHA, Local and State Codes.

Warranty – 5-year limited warranty

FOOTPATH

EMER/LED-WHT-HL Meets Life Safety Code: Average illuminance of 1.0 FC with minimum illuminance of 0.1 FC. Reflectance values: 80/50/20
 Fixture Mounting Height: 8' AFF



Average: 1.11 | Max: 2.3 | Min: 0.2 | Average min: 5.6 | Max/Min: 11.5

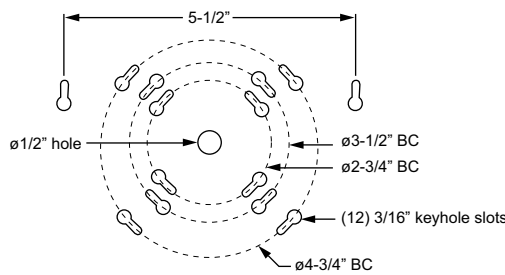
Average: 1.08 | Max: 2.4 | Min: 0.3 | Average min: 3.6 | Max/Min: 8.0

ELECTRICAL INFORMATION

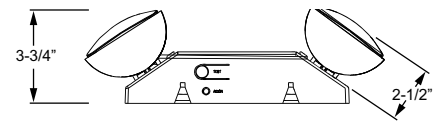
CATALOG NUMBER	INPUT WATTS (W)		INPUT AMPS (A)	
	120V	277V	120V	277V
EMER/LED	1.8	1.8	0.022	0.010
EMER/LED-SDT	1.6	1.6	0.020	0.010

FIXTURE DETAILS

BOLT CIRCLE PATTERN



TOP VIEW



ACCESSORIES

