

CATALOG #: _____

TYPE: _____

PROJECT: _____

FEATURES

- Williams turn-key Power over Ethernet (PoE) solution provides plug-and-play networked lighting and control
- Available in six standard finishes for high-end design
- Unique mounting options – cable, wall, ceiling
- Fixture internals remove as one unit for easy installation and maintenance
- Self-flanged aluminum reflector prevents light leaks and is available in assorted colors
- All-aluminum cylinder components dissipate heat for cooler operation
- Made Right Here® in the USA

SYSTEM REQUIREMENTS

- Lighting system (site software)
- Gateway or alternate server (runs software)
- PoE switches or Ethernet switches and mid-span power injectors
- See hew.com/poe for details

SPECIFICATIONS

- HOUSING** – Extruded aluminum.
- FINISH** – Polyester powder coat bonded to phosphate-free, multi-stage pretreated metal. All parts painted after fabrication to facilitate installation, increase efficiency, and inhibit corrosion.
- ELECTRICAL** – High quality mid-power LED C.O.B. L70 >50,000 hours.
- MOUNTING** – Surface, cable, pendant, or wall. Indoor applications only. Max weight 12 lbs.
- LISTINGS** –
 - cETLus conforms to UL STD 1598 and UL STD 8750. Certified to CAN/CSA STD C22.2 No. 250.0. Suitable for damp locations.
- WARRANTY** – 5-year limited warranty, see hew.com/warranty.

ORDERING EXAMPLE: LC7 - P45C/835 - WHT - CS/M - OPTIONS - QM - POE N

ORDERING INFO

SERIES	LUMENS ^[1]	CRI	CCT	HOUSING FINISH ^[2]	REFLECTOR FINISH	DISTRIBUTION ^[3]
LC7	P14C 1,400lm	8 80	27 2700K	ALUM Satin silver aluminum	CS Clear semi-specular (standard)	W 75° Wide
	P20C 2,000lm	9 90 ^[4]	30 3000K	BLK Textured black	CG Champagne gold	M 50° Medium
	P45C 4,500lm		35 3500K 40 4000K	BRZ Textured bronze NKL Textured nickel SLV Textured silver WHT Textured white	GD Gold PW Pewter SG Satin-glow SPC Clear specular STR Straw WT Wheat WH Painted white reflector, textured	

OPTIONS^[5]

- LAD Acrylic luminous disk
- LADO Acrylic luminous disk open
- LAR Acrylic luminous ring

MOUNTING^[6]

- QM Quick installation canopy surface mount
- PM__ Pendant mount^[8]
Example: 24" pendant = **PM24**
- SM Surface mount to octagonal J-box
- WM Wall mount
- CM__ Adjustable aircraft cable mount, 24" length standard^[9]
Example: 24" cable = **CM24**

CONTROL^[7]

- POE N Power over Ethernet network node
- POE D Power over Ethernet device node^[10]

NOTES

- Lumen output based on W distribution and CS reflector finish, 3500K/80 CRI. Actual lumens may vary +/-5%, see page 2 for FIXTURE PERFORMANCE DATA. Additional lumen package available, see options
- See page 3 for FINISH OPTIONS.
- Beam angle/distribution does not account for options/accessories such as accent cone with lens, acrylic accent rings, or alternate reflector finishes. Actual beam angle/distribution may vary. Consult factory with complete model number for approximate values.
- Extended lead times may apply. Consult factory for availability.
- See hew.com/poe for compatible sensors & switches. See page 3 for OPTIONS DETAILS.
- See page 3 for MOUNTING DETAILS.
- For additional PoE info, see hew.com/poe. PM mounting requires remote mount node. See page 3 for REMOTE MOUNT DETAILS.
- Specify length in 1" increments, minimum 4". Canopy and pendant match fixture housing color unless specified otherwise.
- 48" and 96" lengths available. Canopy painted white unless specified otherwise. Must network cable. See page 3 for REMOTE MOUNT DETAILS.
- Not available for fixtures over 40W



FIXTURE PERFORMANCE DATA

	DISTRIBUTION	DELIVERED LUMENS	WATTAGE	EFFICACY (lm/W)
P14C	W	1437	17	86
	M	1358		82
P20C	W	2019	25	81
	M	1909		76
P45C	W	4461	50	89
	M	4217		84

- Photometrics tested in accordance with IESNA LM-79. Results shown are based on 25°C ambient temperature.
- Wattage shown is average for 120V through 277V input.
- Results based on W distribution and CS reflector finish, 3500K/80CRI, actual lumens may vary +/-5%
- Use multiplier tables to calculate additional options.

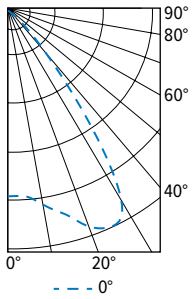
MULTIPLIER TABLES

		COLOR TEMPERATURE	
		CCT	CONVERSION FACTOR
80 CRI	2700K		0.95
	3000K		0.96
	3500K		1.00
	4000K		1.01
90 CRI	2700K		0.74
	3000K		0.85
	3500K		0.90
	4000K		0.91

REFLECTOR FINISH		
CATALOG NUMBER	REFLECTOR FINISH	CONVERSION FACTOR
CS	Clear semi-specular	1.00
SPC	Clear specular	1.02
CG	Champagne Gold	0.96
GD	Gold	0.93
PW	Pewter	0.86
STR	Straw	0.97
WH	White, textured	0.90
WT	Wheat	0.88

PHOTOMETRY

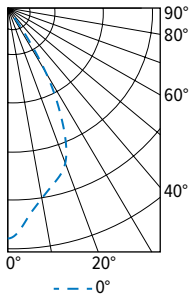
LC7-P45C/835-CS/W Total Luminaire Output: 4461 lumens; 50 Watts | Efficacy: 89 lm/W | 82.1 CRI; 3558K CCT



CANDLEPOWER DISTRIBUTION	VERTICAL ANGLE	HORIZONTAL ANGLE 45°	ZONAL LUMENS
	0	2879	
5	2906		282
15	3215		925
25	3603		1620
35	1903		1192
45	411		341
55	54		62
65	22		21
75	9		10
85	7		8
90	10		

LUMEN SUMMARY	ZONE	LUMENS	% FIXTURE
	0 - 40	4019	90
0 - 60	4421	99	
0 - 90	4461	100	
0 - 180	4461	100	

LC7-P45C/835-CS/M Total Luminaire Output: 4217 lumens; 50 Watts | Efficacy: 84 lm/W | 82.2 CRI; 3562K CCT



CANDLEPOWER DISTRIBUTION	VERTICAL ANGLE	HORIZONTAL ANGLE 45°	ZONAL LUMENS
	0	6352	
5	5846		541
15	4949		1391
25	3549		1585
35	821		597
45	103		88
55	8		10
65	4		3
75	0		1
85	2		2
90	1		

LUMEN SUMMARY	ZONE	LUMENS	% FIXTURE
	0 - 40	4114	98
0 - 60	4211	99	
0 - 90	4217	100	
0 - 180	4217	100	



MOUNTING DETAILS

CABLE MOUNT (CM_)



- CM_** Cable mount fixtures are provided with:
- Adjustable length aircraft cable, must specify length in inches.
 - White cord, No. 18 AWG.
 - One 5" canopy.
 - T-bar clip with 1/4-20 stud.
 - Hard ceiling anchor provided by others.
 - See [instruction sheet](#) for more information.

PENDANT MOUNT (PM_)

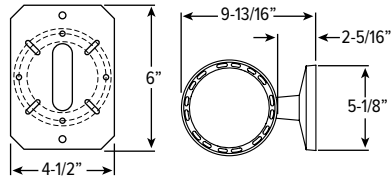


- PM_** Swivel pendant mount fixtures are provided with:
- 45° Swivel canopy
 - 3/4" IPS Threaded stem
 - Specify length of stem, 4" minimum, 24" default length.
 - See [instruction sheet](#) for more information.

WALL MOUNT (WM)



WM Mounts to 4" maximum J-box. Includes wall mounting plate and cast cover.



QUICK SURFACE MOUNT (QM)



QM Quick installation canopy surface mount to octagonal J-box. Increases fixture height by 1".

SURFACE MOUNT



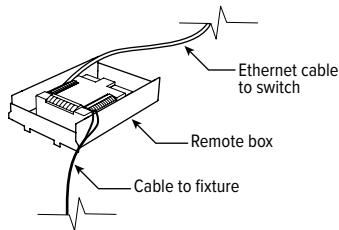
SM Surface mount to octagonal J-box

NETWORK CABLE OPTIONS

Must specify network cable when cable mounting.

EXAMPLE: P24/W		
CORD TYPE	LENGTH	COLOR
P = PoE	24 24"	/B Black /W White
	48 48"	
	96 96"	

REMOTE MOUNT DETAILS



Includes 2' plenum-rated 18ga. solid cable. Remote box can be installed in:

- Above ceiling grid
- Remote closet (within 100ft)
- Surface below ceiling

OPTIONS DETAILS

LAD



LADO

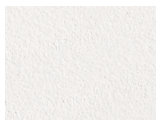


LAR

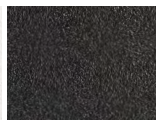


FINISH OPTIONS

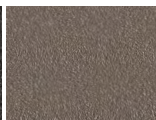
WHITE



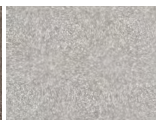
BLACK



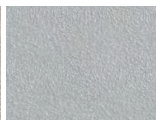
BRONZE



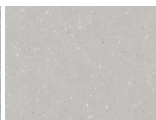
NICKEL



SILVER



ALUMINUM



For custom color, please specify RAL code or a manufacturer code with description. All custom colors other than RAL require two sample swatches, minimum 1" square.

