

CATALOG #: _____

Type: _____

PROJECT: _____

FEATURES

- Designed to deliver subtle area lighting with minimal glare for offices, classrooms, and general applications
- Flush (F) frame level option with frosted acrylic lens (AF125) creates the appearance of an unobtrusive and simple line of light – a perfect complement to unique design applications
- Fixture is Armstrong TechZone™ and USG Logix™ ceiling systems compatible
- Made Right Here® in the USA

SPECIFICATIONS

- HOUSING** – 22-gauge die-formed C.R.S.
- SHIELDING** – Steel door frame with integral torsion springs to secure the frame within the fixture, .125" thick frosted acrylic.
- FINISH** – 92% minimum average reflective white powder polyester coat bonded to phosphate-free, multi-stage pretreated metal. All parts painted after fabrication to facilitate installation, increase efficiency, and inhibit corrosion.
- ELECTRICAL** – High quality mid-power LED boards. Rated for 50,000 hours at 70% lumen maintenance (L70). L70 >50,000 hours.
- MOUNTING** – NEMA Type "G" standard. For flange installations use the Drywall Kit (DFK), ordered separately. Fixture must be installed prior to Drywall Kit (DFK). Accommodates "NFG" and "SS" without modification (EQCLIPS required).
- LISTINGS** –
 - cETLus conforms to UL STD 1598 and UL STD 8750.
 - Certified to CAN/CSA STD C22.2 No. 250.0. Suitable for damp locations.
- WARRANTY** – 5-year limited warranty, see hew.com/warranty.

ORDERING EXAMPLE: LL6 G - 4 - L34/835 - SWF/AF125 - OPTIONS - DIM - UNV

ORDERING INFO

SERIES	CEILING TYPE	LUMENS ^[1]	CRI	CCT	SHIELDING
LL6	G NEMA Type "G", "SS", and "NFG" ^[2]	2'	8 80	27 2700K	SWF/AF125 Steel, flush white frame with frosted acrylic, .125" thick
		L16 1,600lm	9 90 ^[3]	30 3000K	
		L38 3,800lm		35 3500K	SWT/AF125 Steel, tegular white frame with frosted acrylic, .125" thick
		3'	L26 2,600lm	40 4000K	
		L50 5,000lm		50 5000K	
		4'	L34 3,400lm		
		L76 7,600lm			
		5'	L42 4,200lm		
		L85 8,500lm			

OPTIONS	CONTROL ^[4]	VOLTAGE
EM/10W 10-watt emergency driver ^[5]	DIM Dimming driver	120 120V
EQCLIPS Earthquake clips ^[6]	DRV Non-dimming driver	277 277V
(L_) Additional lower lumen packages available. Example: 4,000 nominal lumens = LL6G-4-L34/850-(L40) . ^[7]		UNV 120-277V
DFK-0624W Drywall kit, 6" x 24"		347 347V ^[8]
DFK-0636W Drywall kit, 6" x 36"		
DFK-0648W Drywall kit, 6" x 48"		
DFK-0660W Drywall kit, 6" x 60"		

NOTES

- Lumen output based on 3500 CCT. Actual lumens may vary +/-5%. See page 2 for FIXTURE PERFORMANCE DATA.
- When using in NEMA Type "SS" or "NFG" applications, must specify EQCLIPS option. For flange installations use the Drywall Kit (DFK), see Options.
- Extended lead times may apply. Consult factory for availability.
- See page 2 for ADDITIONAL CONTROL OPTIONS.
- Not available with L16, L38, or L50 lumen stops.
- 2 per fixture.
- Specify in increments of 100 nominal lumens. Option must be specified with next higher lumen package.
- DRV and DIM only. Not available with EM batteries.



LL6 LED 6" Wide Linear Light – Lens Or Louver

FIXTURE PERFORMANCE DATA

	LED PACKAGE	DELIVERED LUMENS	WATTAGE	EFFICACY (lm/W)
2'	L16	1,652	16.3	101.5
	L38	3,830	34.3	111.8
3'	L26	2,636	23.6	111.8
	L50	4,982	47.8	104.2
4'	L34	3,411	32.1	106.3
	L76	7,660	67.4	113.7
5'	L42	4,252	36.8	115.4
	L85	8,534	80.3	106.3

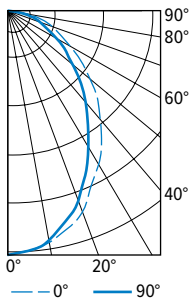
MULTIPLIER TABLE

COLOR TEMPERATURE		
	CCT	CONVERSION FACTOR
80 CRI	2700K	0.97
	3000K	0.99
	3500K	1.00
	4000K	1.03
	5000K	1.06
90 CRI	2700K	0.80
	3000K	0.82
	3500K	0.83
	4000K	0.86
	5000K	0.89

- Photometrics tested in accordance with IESNA LM-79. Results shown are based on 25°C ambient temperature.
- Wattage shown is average for 120V through 277V input.
- Results based on 3500K, 80 CRI, actual lumens may vary +/-5%
- Use multiplier table to calculate additional options.

PHOTOMETRY

LL6G-4-L34/835-SWF/AF125 Total Luminaire Output: 3411 lumens; 32.1 Watts | Efficacy: 106 lm/W | 80 CRI; 3500K CCT



VERTICAL ANGLE	HORIZONTAL ANGLE			ZONAL LUMENS
	0°	45°	90°	
0	1662	1662	1662	
5	1652	1648	1646	156
15	1539	1516	1497	428
25	1334	1286	1235	594
35	1103	1026	954	641
45	850	765	694	589
55	580	513	460	464
65	361	318	285	318
75	179	156	141	171
85	50	44	41	50
90	0	0	0	

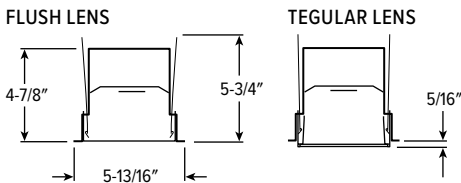
LUMEN SUMMARY	ZONE	LUMENS	% FIXTURE
	0 - 30	1177	35
	0 - 40	1818	53
	0 - 60	2872	84
	0 - 90	3411	100
	0 - 180	3411	100

ADDITIONAL CONTROL OPTIONS

Note: Lumen restrictions apply, consult product builder at hew.com/product-builder.

CATALOG NUMBER	DESCRIPTION
DRV	Driver prewired for non-dimming applications
DIM	Dimming driver prewired for 0-10V low voltage applications
DIM1	1% dimming driver prewired for 0-10V low voltage applications
DIM LINE	Line voltage dimming driver (Must specify 120V or 277V only)
SD40	40% step-dimming driver
SD50	50% step-dimming driver
DALI	DALI dimming driver
LTE LINE	Lutron Hi-lume 1% 2-wire dimming driver forward phase line voltage controls (120V only)
LDE1	Lutron Hi-lume 1% EcoSystem dimming LED driver
LDE5	Lutron 5-Series 5% EcoSystem dimming LED driver
ELDO SOLOB	EldoLED Solodrive, 0.1% dimming driver for 0-10V controls
ELDO SOLOB DALI	EldoLED Solodrive, 0.1% dimming driver for DALI controls
ELDO ECO1	EldoLED Ecodrive, 1% dimming driver for 0-10V controls
ELDO ECO1 DALI	EldoLED Ecodrive, 1% dimming driver for DALI controls

CROSS SECTIONS

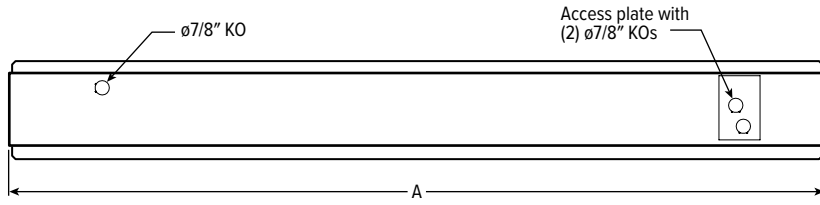


LL6 LED

6" Wide Linear Light – Lens Or Louver

FIXTURE DETAILS

BACKVIEW



NOMINAL LENGTH	ACTUAL LENGTH (A)
2'	23-15/16"
3'	35-15/16"
4'	47-15/16"
5'	59-15/16"