

CATALOG #: \_\_\_\_\_

TYPE: \_\_\_\_\_

PROJECT: \_\_\_\_\_

**FEATURES**

- Slim 2-3/16" depth for shallow plenum applications
- Uniform ambient illumination
- Easy to install without the use of tools
- Seamless design prevents light leak
- Shipped in 2-packs to reduce job-site waste
- PMMA lens reduces the risk of yellowing from UV exposure
- Available on QuickShip for immediate project requirements

**SPECIFICATIONS**

- HOUSING – Seam-welded, precision die-formed aluminum.
- OPTICS – Edge-lit PMMA light guide panel.
- FINISH – Non-glare matte white polyester powder coat. All parts painted after fabrication to facilitate installation, increase efficiency, and inhibit corrosion.
- ELECTRICAL – High quality mid-power LED boards. L80 >50,000 hours. -20°C minimum to 50°C maximum ambient operating temperature.
- MOUNTING – NEMA Type "G". Skylight, surface mount, and drywall kit options available, shipped separately.
- LISTINGS –
  - Product is inherently IC-rated.
  - CULUS listed as LED luminaire suitable for dry or damp locations.
  - DesignLights Consortium qualified product. Not all versions of this product may be DLC qualified, see the DLC Qualified Products List at [www.designlights.org/QPL](http://www.designlights.org/QPL).
- WARRANTY – 5-year limited fixture warranty, see [hew.com/warranty](http://hew.com/warranty).

**ORDERING EXAMPLE: LP - 24 - L50/835 - OPTIONS - DIM - UNV**

**ORDERING INFO**

SERIES	WIDTH	LENGTH	LUMENS <sup>[1]</sup>	CRI	CCT	OPTIONS <sup>[2]</sup>
LP	1 1' <sup>[3]</sup>	2 2' <sup>[4]</sup>	1x4	8 80	35 3500K	EM/10WRM Remote mount 10-watt emergency battery <sup>[7]</sup>
	2 2'	4 4'	L40 4,000lm		40 4000K	
			2x2			DRYWALL FRAME-IN KITS <sup>[8]</sup> DFK-1248W Drywall kit, 12" x 48", white DFK-2424W Drywall kit, 24" x 24", white DFK-2448W Drywall kit, 24" x 48", white
			L40 4,000lm			
			L50 5,000lm <sup>[5]</sup>			
			2x4			SURFACE MOUNT KITS <sup>[9]</sup> LP14SMK Surface mount kit, 1' x 4' LP22SMK Surface mount kit, 2' x 2' LP24SMK Surface mount kit, 2' x 4'
			L50 5,000lm			
			L62 6,200lm <sup>[6]</sup>			
						SKYLIGHT KITS <sup>[10]</sup> LP142SL Skylight, 1' x 4', 2" depth LP222SL Skylight, 2' x 2', 2" depth LP242SL Skylight, 2' x 4', 2" depth

DRIVER	VOLTAGE
DIM Dimming driver <sup>[11]</sup>	UNV 120-277V

**QUICKSHIP**

1x4	2x2	2x4
LP-14-L40/835-QS-DIM-UNV	LP-22-L40/835-QS-DIM-UNV	LP-24-L50/835-QS-DIM-UNV
LP-14-L40/840-QS-DIM-UNV	LP-22-L40/840-QS-DIM-UNV	LP-24-L50/840-QS-DIM-UNV



**NOTES**

- <sup>1</sup> Nominal lumen output based on 3500 CCT. Actual lumens may vary +/-5%, see page 2 for FIXTURE PERFORMANCE DATA.
- <sup>2</sup> Ships separately, field installed.
- <sup>3</sup> 4' length only.
- <sup>4</sup> 2' width only.
- <sup>5</sup> Extended lead times may apply. Consult factory for availability.
- <sup>6</sup> Extended lead times may apply. Consult factory for availability.
- <sup>7</sup> See page 3 for EM/10WRM DETAILS.
- <sup>8</sup> See Technical Info at [hew.com](http://hew.com) for Drywall Kit details.
- <sup>9</sup> See page 3 for SURFACE MOUNT DETAILS.
- <sup>10</sup> See page 4 for SKYLIGHT DETAILS.
- <sup>11</sup> Dimming driver prewired for 0-10V low voltage applications.

## FIXTURE PERFORMANCE DATA

	LED PACKAGE	DELIVERED LUMENS	WATTAGE	EFFICACY (lm/W)
1x4	L40	4029	39.7	101.5
	L40	4155	39.2	106.0
2x2	L50	4965	39.9	124.4
	L50	4906	48.1	102.0
2x4	L50	4906	48.1	102.0
	L62	6115	47.3	129.3

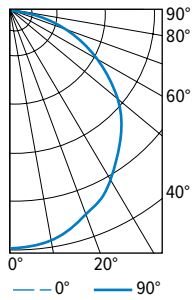
### MULTIPLIER TABLE

COLOR TEMPERATURE	
CCT	CONVERSION FACTOR
3500K	1.00
4000K	1.03

- Photometrics tested in accordance with IESNA LM-79. Results shown are based on 25°C ambient temperature.
- Wattage shown is average for 120V through 277V input.
- Results based on 3500K, 80 CRI, actual lumens may vary +/-5%
- Use multiplier table to calculate additional options.

## PHOTOMETRY

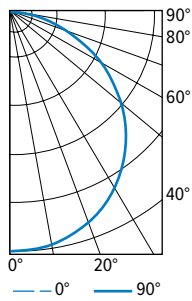
**LP-14-L40-835-DIM-UNV** Total Luminaire Output: 4029 lumens; 39.7 Watts | Efficacy: 101.5 lm/W



VERTICAL ANGLE	HORIZONTAL ANGLE			ZONAL LUMENS
	0°	45°	90°	
0	1432	1432	1432	
5	1433	1433	1433	136
15	1379	1381	1384	388
25	1271	1278	1282	584
35	1101	1107	1114	695
45	938	948	951	727
55	719	720	725	646
65	504	504	501	492
75	261	255	257	278
85	73	70	67	83
90	5	6	5	

LUMEN SUMMARY	ZONE	LUMENS	% FIXTURE
	0 - 30	1108	28
	0 - 40	1803	45
	0 - 60	3175	79
	0 - 90	4029	100
	0 - 180	4029	100

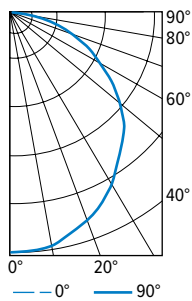
**LP-22-L40-835-DIM-UNV** Total Luminaire Output: 4155 lumens; 39.2 Watts | Efficacy: 106.0 lm/W



VERTICAL ANGLE	HORIZONTAL ANGLE			ZONAL LUMENS
	0°	45°	90°	
0	1463	1463	1463	
5	1464	1457	1453	139
15	1415	1406	1403	397
25	1317	1310	1308	604
35	1168	1163	1162	729
45	987	977	980	756
55	764	753	758	676
65	517	514	507	507
75	270	262	261	280
85	53	47	48	67
90	0	1	0	

LUMEN SUMMARY	ZONE	LUMENS	% FIXTURE
	0 - 30	1140	27
	0 - 40	1868	45
	0 - 60	3301	79
	0 - 90	4155	100
	0 - 180	4155	100

**LP-24-L50-835-DIM-UNV** Total Luminaire Output: 4906 lumens; 48.1 Watts | Efficacy: 102.0 lm/W

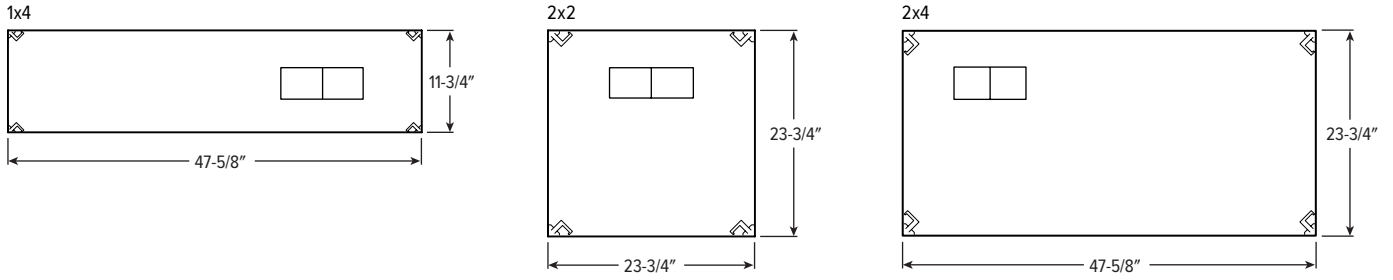


VERTICAL ANGLE	HORIZONTAL ANGLE			ZONAL LUMENS
	0°	45°	90°	
0	1732	1732	1732	
5	1727	1724	1724	164
15	1645	1648	1653	467
25	1530	1539	1548	707
35	1324	1338	1355	842
45	1153	1170	1187	894
55	879	891	903	794
65	615	619	625	605
75	315	313	313	336
85	88	85	83	97
90	7	5	5	

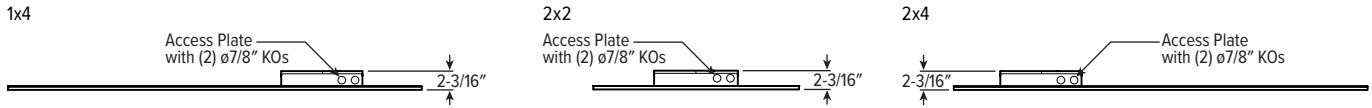
LUMEN SUMMARY	ZONE	LUMENS	% FIXTURE
	0 - 30	1338	27
	0 - 40	2180	44
	0 - 60	3868	79
	0 - 90	4906	100
	0 - 180	4906	100

**RECESSED DETAILS**

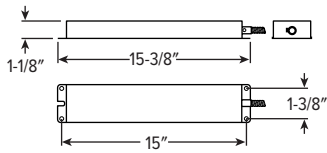
**BACKVIEW**



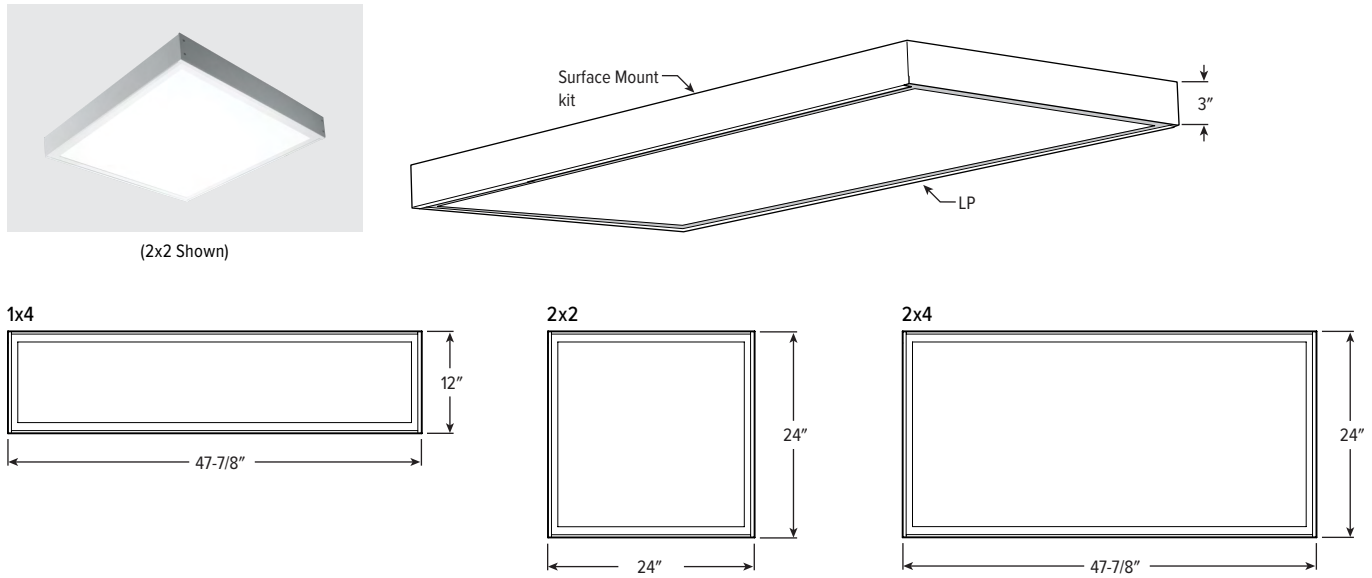
**SIDE VIEW**



**EM/10WRM DETAILS**



**SURFACE MOUNT DETAILS**



SKYLIGHT DETAILS



(2x2 Shown)

