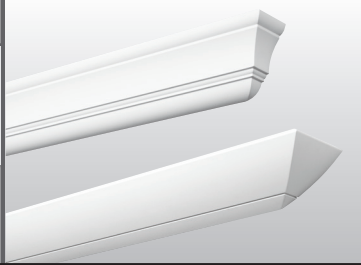


# DESIGNERLINE LOW-PROFILE WALL MOUNT COVE

# LPC

tunable **WHITE** | PoE



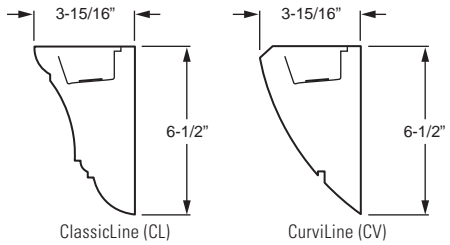
CATALOG #: \_\_\_\_\_ TYPE: \_\_\_\_\_

PROJECT: \_\_\_\_\_ NOTES: \_\_\_\_\_

**EXAMPLE** **LPC** **CL** - **4** - **P43/840** - **F / F** - **OPTIONS** - **POE N**

SERIES    STYLE    NOMINAL LENGTH    LUMEN PACKAGE    CRI & CCT    FIXT. TYPE    END CAP    OPTIONS/ACCESSORIES    CONTROL

## CROSS SECTIONS



## ORDERING INFORMATION

**SERIES**  
**LPC** DesignerLine Low-Profile Cove – PoE

**STYLE**  
**CL** Classic  
**CV** CurviLine

**NOMINAL LENGTH**  
**4** 4'  
**8** 8'

**LED PACKAGE**

EXAMPLE: P43/840		
LUMEN PACKAGE	NOMINAL LUMENS	WATTAGE
4'		
<b>P29</b>	2,900	25
<b>P43</b>	4,300	34
8'		
<b>P58</b>	5,800	46

Nominal lumen output based on 4000K for single CCT and TW. Actual lumens may vary +/-5%, see fixture performance data.

**CRI & CCT**

<b>827</b>	82 CRI, 2700K
<b>830</b>	82 CRI, 3000K
<b>835</b>	82 CRI, 3500K
<b>840</b>	82 CRI, 4000K
<b>850</b>	82 CRI, 5000K
<b>8TW</b>	Tunable white (80 CRI, 3000K–5000K)

**FIXTURE TYPE**  
**F** Electrical feeder unit, left end cap installed  
**J** Joiner unit, no end caps  
**E** End unit, right end cap installed  
**S** Stand-alone unit, two end caps installed

**END CAP STYLE**  
**F** Flat ends  
**M** Mitered ends (increases overall length, see back for details)

**OPTIONS**  
**EM/CP12** Remote mount 12-watt Iota emergency LED battery, controls ambient compartment only (requires one additional category cable run to switch, see page 3 for details)  
**AMW** Anti-microbial white finish

**ACCESSORIES**  
 See [hew.com/poe](http://hew.com/poe) for compatible sensors & switches

**CONTROL**  
 For additional PoE info, see [hew.com/poe](http://hew.com/poe)  
**POE N** Power over Ethernet network node  
**POE D** Power over Ethernet device node

## FEATURES

- ▶ Williams turn-key Power over Ethernet (PoE) solution provides plug-and-play networked lighting and control.
- ▶ Tunable white from 3000K to 5000K CCT, minimum 80 CRI.
- ▶ Efficacies up to 127 lm/W.
- ▶ Combines the look of continuous crown molding with big fixture performance in a compact, ADA compliant, architecturally styled package
- ▶ Common applications include smaller offices, corridors, healthcare facilities, and spaces with low to moderate ceiling heights
- ▶ Provides indirect illumination in locations where it is important to avoid typical glare
- ▶ DesignerLine Low-Profile Cove is part of an extensive system of matched products including various cove and valance fixtures
- ▶ Heavy-duty hook-on mounting brackets make it easy to securely install and level fixtures
- ▶ Joiner and alignment system permit mounting in continuous rows with hairline seams that virtually disappear
- ▶ Optional anti-microbial white finish available for use in healthcare applications
- ▶ This fixture is proudly made in the USA

## SYSTEM REQUIREMENTS

- Lighting system (site software)
- Gateway or alternate server (runs software)
- PoE switches or Ethernet switches and mid-span power injectors
- See [hew.com/poe](http://hew.com/poe) for details



### SPECIFICATIONS

**Housing/Reflector** – Seam-welded extruded aluminum.

**Weight** – 5 lbs. per foot

**End Caps** – Aluminum, welded, seam-filled and finished at ends of individual units and rows.

**Reflective Surfaces** – 92% minimum average reflective white polyester powder coat on interior components.

**Shielding** – Frosted acrylic, .125" thick.

**Finish** – Textured matte white polyester TGIC powder coat bonded to phosphate-free, multi-stage pretreated metal. All parts painted after fabrication to facilitate installation, increase efficiency, and inhibit corrosion.

**Electrical** – High quality mid-power LED board. L70 > 50,000 hours per IES TM-21. Low-voltage DC fixture, to be fed by Class 2 power supply. Tunable White products use LEDs of multiple CCTs and may produce a perceptibly different shade of white from single-CCT products at the same CCT. All CCTs are within 3 MacAdam ellipses.

**Mounting** – Wall mount, individual units or continuous rows.

**Labels** – cCSAus certified as luminaire suitable for dry or damp locations.

**Warranty** – 5-year limited warranty, see hew.com/warranty.

### IMPORTANT:

Electrostatic sensitive unit. Observe precautions when handling.

### FIXTURE PERFORMANCE DATA

#### STANDARD

LED PACKAGE	DELIVERED LUMENS	WATTAGE	EFFICACY (lm/W)
4'			
P29	2935	24.8	118.3
P43	4332	34.1	127.0
8'			
P58	5823	46.4	125.5

#### TUNABLE WHITE

LED PACKAGE	DELIVERED LUMENS	WATTAGE	EFFICACY (lm/W)
4'			
P29	2925	25.1	116.6
P43	4310	37.0	116.5
8'			
P58	5802	47.0	123.4

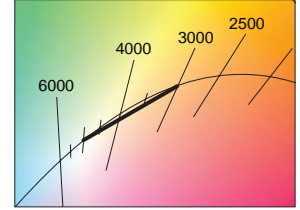
### MULTIPLIER TABLES

#### STANDARD

CCT	CONVERSION FACTOR
2700K	0.95
3000K	0.96
3500K	0.97
4000K	1.00
5000K	1.03

#### TUNABLE WHITE

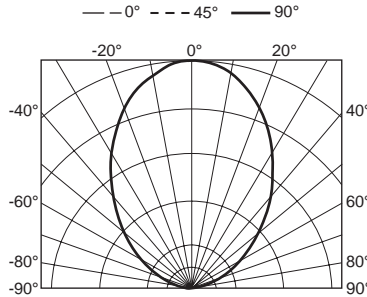
CCT	CONVERSION FACTOR
3000K	0.95
3500K	0.98
4000K	1.00
5000K	0.96



- Photometrics tested in accordance with IESNA LM-79. Results shown are based on 25°C ambient temperature.
- Results based on 4000K standard, 80 CRI, actual lumens may vary +/-5%
- Use multiplier table to calculate additional options.

### PHOTOMETRY

**LPCCL-4-P43/840-POE** Total Luminaire Output: 4332 lumens; 34.1 Watts | Efficacy: 127 lm/W

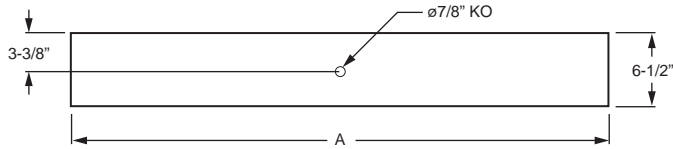


Vertical Angle	Horizontal Angle					Zonal Lumens
	0°	45°	90°	135°	180°	
0	3	4	14	7	11	
5	37	56	104	60	46	78
15	206	242	258	213	173	243
25	417	442	469	418	351	428
35	657	695	729	665	603	611
45	945	990	1022	949	873	748
55	1268	1303	1328	1259	1191	801
65	1569	1590	1600	1560	1503	724
75	1821	1825	1832	1813	1797	510
85	1948	1944	1959	1944	1950	184
90	1969	1969	1969	1969	1969	

LUMEN SUMMARY	Zone	Lumens	% Fixture
	90-120	749	17
	90-130	1360	31
	90-150	2909	67
	90-180	4327	100
	0-180	4332	100

## FIXTURE DETAILS

### BACK VIEW



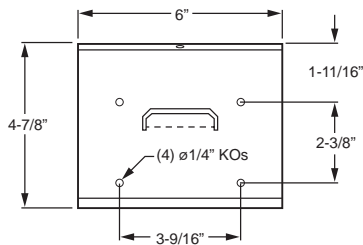
NOMINAL LENGTH	ACTUAL LENGTH (A)
4'	46-3/16"
8'	92-1/8"

**Note:** Mitered ends add to overall length, see details at right.

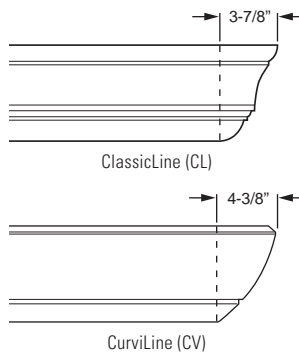
### FIXTURE TYPE DETAILS (ClassicLine shown)

	F	J	E	S
Mitered				
Flat				

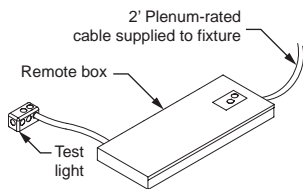
### WALL MOUNT BRACKET



### MITERED END DETAILS



### REMOTE MOUNT EM OPTION DETAILS



Includes 2' plenum rated 18ga. solid cable.  
Remote box can be installed in:

- Above ceiling grid
- Remote closet (within 100ft)
- Surface below ceiling

See [Technical Info](#) for dimension details.

