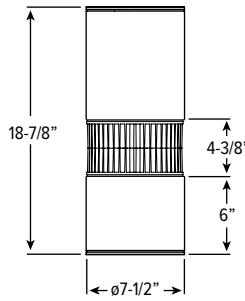


MC7 LED 7.5" Mid-Output Cylinder



CATALOG #: _____

TYPE: _____

PROJECT: _____

FEATURES

- Mid-output illumination for 12'-36' mounting heights.
- Self-flanged aluminum reflector prevents light leaks and is available in assorted colors.
- Wide, medium, and narrow distributions to tailor performance to the application.
- Available in six standard finishes for high-end design.
- Optional 90 CRI provides long-life alternative to tungsten halogen.
- Passive aluminum heat sink for reliable thermal management.
- Multiple driver options to adapt to a variety of control systems.
- Multi-channel LED board allows for stepped switching configurations.
- All-aluminum cylinder components dissipate heat for cooler operation.
- Made Right Here® in the USA

SPECIFICATIONS

- HOUSING** – Extruded aluminum.
- FINISH** – Polyester powder coat bonded to phosphate-free, multi-stage pretreated metal. All parts painted after fabrication to facilitate installation, increase efficiency, and inhibit corrosion.
- ELECTRICAL** – High power LEDs on aluminum circuit board. L70 >60,000 hours. 40°C maximum ambient operating temperature.
- MOUNTING** – Surface, cable, pendant or wall mount. Indoor applications only. Max weight approximately 16 lbs. Max weight with SD transformer and 347V approximately 22 lbs.
- LISTINGS** –
 - cETLus conforms to UL STD 1598 and UL STD 8750. Certified to CAN/CSA STD C22.2 No. 250.0. Suitable for damp locations.
- WARRANTY** – 5-year limited warranty, see hew.com/warranty.

ORDERING EXAMPLE: MC7 - L63/835 - BLK - CS/M - OPTIONS - CM - DIM - UNV

ORDERING INFO

SERIES	LUMENS ^[1]	CRI/CCT	HOUSING FINISH ^[2]	REFLECTOR FINISH	DISTRIBUTION
MC7	80 CRI	80 CRI	ALUM Satin silver aluminum	CS Clear semi-specular (standard)	W 70° Wide
	L42 4,200lm	830 3000K	BLK Textured black	SPC Clear specular	M 60° Medium
	L63 6,300lm	835 3500K	BRZ Textured bronze	CG Champagne gold	N 40° Narrow
	90 CRI	840 4000K	NKL Textured nickel	GD Gold	
	L34 3,400lm	90 CRI ^[3]	SLV Textured silver	PW Pewter	
	L50 5,000lm	927 2700K	WHT Textured white	SG Satin-glow	
		930 3000K		STR Straw	
				WT Wheat	
				WH Painted white reflector, textured	

OPTIONS ^[4]

- LAD** Acrylic luminous disk
- LADO** Acrylic luminous disk open
- LAR** Acrylic luminous ring

MOUNTING ^[5]

- CM** Adjustable aircraft cable mount, ^[7] Example: 24" cable = **CM24**.
- PM** Pendant mount ^[8] Example: 24" pendant = **PM24**.
- QM** Quick installation canopy surface mount
- WM** Wall mount

DRIVER ^[6]

- DRV** Non-dimming driver
- DIM** Dimming driver
- SD** Driver pre-wired for stepped dimming

VOLTAGE

- 120** 120V
- 277** 277V
- UNV** 120-277V
- 347** 347V ^[9]

NOTES

- Lumen output based on W distribution and CS reflector finish, 3500K/80CRI. Actual lumens may vary +/-5%, see page 2 for FIXTURE PERFORMANCE DATA. Additional lumen package available, see options
- See page 3 for FINISH OPTIONS.
- Extended lead times may apply. Consult factory for availability.
- EM battery not available. See page 3 for OPTIONS DETAILS.
- See page 3 for MOUNTING DETAILS.
- See page 3 for ADDITIONAL DRIVER OPTIONS.
- Specify length 24", 48", or 96" available; not for use on sloped ceilings. Canopy and cord painted white unless specified otherwise. Must specify cord. See page 3 for OPTIONS DETAILS.
- Specify length in 1" increments, minimum 4". Canopy and pendant match fixture housing color unless specified otherwise.
- DRV and DIM only



MC7 LED 7.5" Mid-Output Cylinder

FIXTURE PERFORMANCE DATA

	DISTRIBUTION	DELIVERED LUMENS	WATTAGE	EFFICACY (lm/W)
80 CRI				
L42	W	4203	71	59
	M	4120		58
	N	4695		66
L63	W	6304	106	60
	M	6179		58
	N	7043		66
90 CRI				
L34	W	3363	71	47
	M	3297		46
	N	3758		53
L50	W	5045	106	48
	M	4945		47
	N	5637		53

MULTIPLIER TABLES

COLOR TEMPERATURE		
CRI	CCT	CONVERSION FACTOR
80	3000K	0.96
	3500K	1.00
	4000K	1.05
90	2700K	0.80
	3000K	0.80

REFLECTOR FINISH		
CATALOG NUMBER	REFLECTOR FINISH	CONVERSION FACTOR
CS	Clear semi-specular	1.00
SPC	Clear specular	1.02
CG	Champagne Gold	0.96
GD	Gold	0.93
PW	Pewter	0.86
SG	Satin-glow	0.83
STR	Straw	0.97
WH	White, textured	0.90
WT	Wheat	0.88
MB	Micro-baffle	0.60

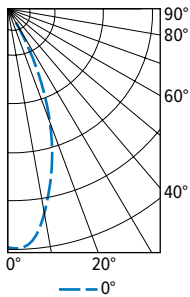
STEP DIMMING LEVELS

CRI	LUMEN PACKAGE	DIM LEVEL
80	L42	-
	L63	33%
90	L34	-
	L50	33%

- Photometrics tested in accordance with IESNA LM-79. Results shown are based on 25°C ambient temperature.
- Wattage shown is average for 120V through 277V input.
- Results based on W distribution and CS reflector finish, 3500K/80CRI, actual lumens may vary +/-5%
- Use multiplier table to calculate additional options.

PHOTOMETRY

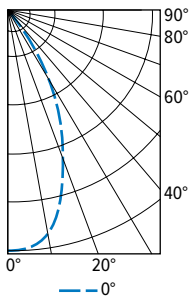
MC7-L63/835-WHT-CS/N-PM-DRV-UNV Report #: 19623.0; 12/19/16 | Total Luminaire Output: 7043 lumens; 106.4 Watts | Efficacy: 66.2 lm/W | 83.3 CRI; 3474K CCT



	VERTICAL ANGLE	HORIZONTAL ANGLE 0°	ZONAL LUMENS
CANDLEPOWER DISTRIBUTION	0	14577	
	5	14271	1362
	15	10093	2861
	25	4242	1964
	35	1098	690
	45	169	131
	55	22	20
	65	11	11
	75	5	6
	85	0	0
	90	0	0

LUMEN SUMMARY	ZONE	LUMENS	% FIXTURE
	0 - 30	6187	88
	0 - 40	6877	98
	0 - 60	7027	100
	0 - 90	7043	100
	0 - 180	7043	100

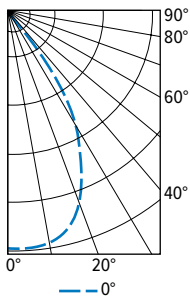
MC7-L63/835-WHT-CS/M-PM-DRV-UNV Report #: 19628.0; 12/21/16 | Total Luminaire Output: 6179 lumens; 106.4 Watts | Efficacy: 58.1 lm/W | 83.3 CRI; 3515K CCT



	VERTICAL ANGLE	HORIZONTAL ANGLE 0°	ZONAL LUMENS
CANDLEPOWER DISTRIBUTION	0	8509	
	5	8445	806
	15	7204	204
	25	4268	1976
	35	1697	1066
	45	307	237
	55	34	31
	65	16	16
	75	5	6
	85	0	0
	90	0	0

LUMEN SUMMARY	ZONE	LUMENS	% FIXTURE
	0 - 30	4824	78
	0 - 40	5890	95
	0 - 60	6158	100
	0 - 90	6179	100
	0 - 180	6179	100

MC7-L63/835-WHT-CS/W-PM-DRV-UNV Report #: 19627.0; 12/21/16 | Total Luminaire Output: 6304 lumens; 106.4 Watts | Efficacy: 59.2 lm/W | 83.2 CRI; 3520K CCT



	VERTICAL ANGLE	HORIZONTAL ANGLE 0°	ZONAL LUMENS
CANDLEPOWER DISTRIBUTION	0	6017	
	5	6100	582
	15	5739	1627
	25	4448	2059
	35	2170	1364
	45	683	529
	55	107	96
	65	33	32
	75	13	14
	85	2	2
	90	0	0

LUMEN SUMMARY	ZONE	LUMENS	% FIXTURE
	0 - 30	4268	68
	0 - 40	5631	89
	0 - 60	6256	99
	0 - 90	6304	100
	0 - 180	6304	100



MC7 LED 7.5" Mid-Output Cylinder

ADDITIONAL DRIVER OPTIONS

Note: Lumen restrictions apply, consult product builder at hew.com/product-builder.

CATALOG NUMBER	DESCRIPTION
DRV	Driver prewired for non-dimming applications
DIM	Dimming driver prewired for 0-10V low voltage applications
DIM1	1% dimming driver prewired for 0-10V low voltage applications
DIM LINE	Line voltage dimming driver (Must specify 120V or 277V only)
SD40	40% step-dimming driver
SD50	50% step-dimming driver
DALI	DALI dimming driver
LTE LINE	Lutron Hi-lume 1% 2-wire dimming driver forward phase line voltage controls (120V only)
LDE1	Lutron Hi-lume 1% EcoSystem dimming LED driver
LDE5	Lutron 5-Series 5% EcoSystem dimming LED driver
ELDO SOLOB	EldoLED Solodrive, 0.1% dimming driver for 0-10V controls
ELDO SOLOB DALI	EldoLED Solodrive, 0.1% dimming driver for DALI controls
ELDO ECO1	EldoLED Ecodrive, 1% dimming driver for 0-10V controls
ELDO ECO1 DALI	EldoLED Ecodrive, 1% dimming driver for DALI controls

MOUNTING DETAILS

CABLE MOUNT (CM_)



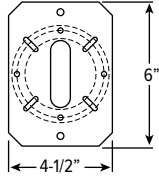
- Cable mount fixtures are provided with:
- Adjustable length aircraft cable, must specify length in inches.
 - White cord, No. 18 AWG.
 - One 5" canopy.
 - T-bar clip with 1/4-20 stud.
 - Hard ceiling anchor provided by others.
 - Not for use on sloped ceilings.
 - See [instruction sheet](#) for more information.

PENDANT MOUNT (PM_)



- Swivel pendant mount fixtures are provided with:
- 45° Swivel canopy
 - 3/8" IPS (5/8" O.D.) Threaded stem
 - Specify length of stem, 4" minimum, 24" default length.
 - See [instruction sheet](#) for more information.

WALL MOUNT (WM)



Mounts to 4" maximum J-box. Includes wall mounting plate and cast cover.

QUICK SURFACE MOUNT (QM)



Quick installation canopy surface mount. Increases fixture height by 1"

CORD OPTIONS

Must specify cord when cable mounting.

EXAMPLE: S2438/W				
CORD TYPE	LENGTH	# OF CONDUCTORS	WIRE SIZE	COLOR
S = Straight	24 24"	3 3	8 18-guage	/B Black
	48 48"	4 4		/W White
	96 96"	5 5		

OPTIONS DETAILS

LAD



LADO

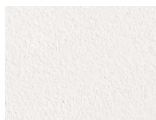


LAR

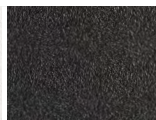


FINISH OPTIONS

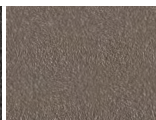
WHITE



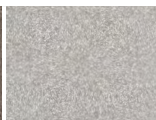
BLACK



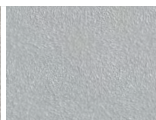
BRONZE



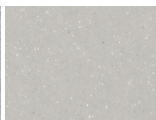
NICKEL



SILVER



ALUMINUM



For custom color, please specify RAL code or a manufacturer code with description. All custom colors other than RAL require two sample swatches, minimum 1" square.

