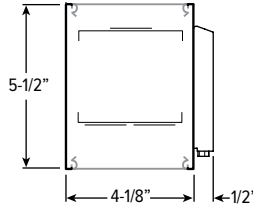
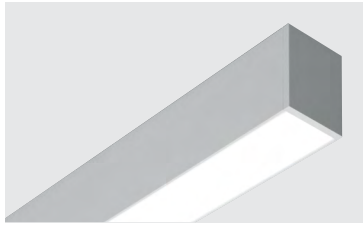


MX4WUD tunable WHITE 4" Continuous Up/Down – Wall



CATALOG #: _____

TYPE: _____

PROJECT: _____

FEATURES

- Tunable white from 3000K to 5000K CCT, minimum 80 CRI
- Create elegant spaces with a seamless, continuous row of illumination
- Flat and proud lenses give designers a variety of looks
- Fixture attaches to wall bracket for simple installation
- Maximize energy savings with efficacies as high as 124 lm/W
- Linear extrusion contains snap-in light rails for ease of installation and maintenance
- Versatile MX4 system includes recessed, surface, suspended and in-wall mounting, see hew.com
- Diffuse acrylic lens provides uniform illumination for visual comfort
- Made Right Here™ in the USA

SPECIFICATIONS

- HOUSING – Extruded aluminum with die-cast end plates.
- SHIELDING – Extruded, flat, diffuse acrylic lens.
- FINISH – Textured matte white polyester TGIC powder coat bonded to phosphate-free, multi-stage pretreated metal. All parts painted after fabrication to facilitate installation, increase efficiency, and inhibit corrosion.
- ELECTRICAL – High quality mid-power LED board. L70 > 60,000 hours per IES TM-21. Tunable White products use LEDs of multiple CCTs and may produce a perceptibly different shade of white from single-CCT products at the same CCT. All CCTs are within 3 MacAdam ellipses.
- MOUNTING – Wall mount. Powder coated, die-formed C.R.S. receiving bracket mounted to fixture which attaches to galvanized, wall mounted bracket.
- LISTINGS – cETLus conforms to UL STD 1598. Certified to CAN/CSA STD C22.2 No. 250.0. Suitable for damp locations.
- WARRANTY – 5-year limited warranty, see hew.com/warranty.

ORDERING EXAMPLE: MX4WUD - 12'00 - L8/8TWU/L8/8TWD - A/F - OPTIONS - DALI - UNV

| | | | | |
|--|--|---|--|--|
| SERIES | LENGTH | LUMEN PACKAGE (EXAMPLE: L8/8TWU/L8/8TWD) | | |
| MX4WUD | Lengths specified in feet and inches using 4" increments, 2" minimum. Example: 12'00 = 12'-0" | Specify lumen packages: U for Uplight and D for Downlight | | |
| | | LUMENS ^[1] | COLOR | U or D |
| | | L8 800lm | 8TW Tunable white (80 CRI, 3000K-5000K) | U Uplight D Downlight |
| PRODUCT BUILDER | | | | |
| Simplify ordering & layout design with the Williams Linear Product Builder at hew.com/product-builder | | | | |

| SHIELDING UP | SHIELDING DOWN | OPTIONS ^[2] | CONTROL ^[3] | VOLTAGE |
|---|--|---|--|------------------------------------|
| A Flat, semi-diffuse acrylic | F Flat, diffuse acrylic | EM/7WRM Remote mount 7-watt emergency battery | DALI Driver prewired for DALI applications | 120 120V 277 277V |
| F Flat, diffuse acrylic ^[4] | P Proud, diffuse acrylic with 5/16" drop ^[5] | EM/10WRM Remote mount 10-watt emergency battery | DIM (1) 0-10V signal to control dimming (1) 0-10V signal to control CCT | UNV 120-277V |
| | | OCC__ Factory-installed occupancy sensor ^[6] : OCCWS FS-355-L6 | DMX Driver prewired for DMX applications | |

NOTES

- ¹ Lumens per foot based on 4000K CCT and F shielding. Actual lumens may vary ±5%. See page 2 for FIXTURE PERFORMANCE DATA.
- ² See page 3 for FINISH OPTIONS. Custom colors available upon request.
- ³ See page 2 for CONTROL DETAILS.
- ⁴ Recommended for use in applications where the fixture will be viewed from above. Decreases lumen output.
- ⁵ See page 3 for SHIELDING DETAILS.
- ⁶ Recommended for use in downlight orientation only. Utilizes 4" of housing at end of fixture. See page 3 for FIXTURE DETAILS. 120V or 277V only.



MX4WUD tunable WHITE 4" Continuous Up/Down – Wall

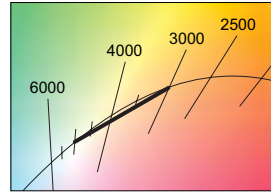
FIXTURE PERFORMANCE DATA

| PER FOOT | | |
|------------------|---------|-----------------|
| DELIVERED LUMENS | WATTAGE | EFFICACY (lm/W) |
| 1667 | 13.4 | 124 |

- Photometrics tested in accordance with IESNA LM-79. Results shown are based on 25°C ambient temperature.
- Wattage shown is average for 120V through 277V input.
- Results based on 4000K, 80 CRI, actual lumens may vary +/-5%
- Use multiplier table to calculate additional options.

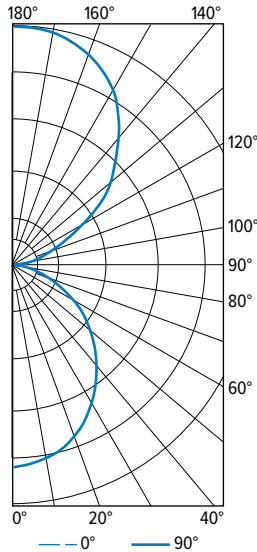
MULTIPLIER TABLE

| CCT | CONVERSION FACTOR | |
|-------|-------------------|---------|
| | LUMENS | WATTAGE |
| 3000K | 0.95 | 1.04 |
| 3500K | 0.98 | 1.02 |
| 4000K | 1.00 | 1.00 |
| 5000K | 0.96 | 1.04 |



PHOTOMETRY

MX4WUD-4'00-L8/8TWU/L8/8TWD-A/F-DALI Total Luminaire Output: 6668 lumens; 53.7 Watts | Efficacy: 124 lm/W | 80 CRI; 3500K CCT

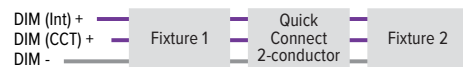


| VERTICAL ANGLE | HORIZONTAL ANGLE | | | | | ZONAL LUMENS |
|----------------|------------------|------|------|------|------|--------------|
| | 0° | 45° | 90° | 135° | 180° | |
| 0 | 1144 | 1144 | 1144 | 1144 | 1144 | 1144 |
| 5 | 1164 | 1152 | 1124 | 1122 | 1134 | 108 |
| 15 | 1112 | 1102 | 1080 | 1064 | 1070 | 306 |
| 25 | 1016 | 1008 | 975 | 965 | 965 | 453 |
| 35 | 871 | 865 | 839 | 821 | 813 | 526 |
| 45 | 702 | 700 | 676 | 660 | 628 | 520 |
| 55 | 528 | 516 | 492 | 484 | 478 | 445 |
| 65 | 335 | 327 | 315 | 309 | 309 | 315 |
| 75 | 159 | 151 | 143 | 147 | 140 | 159 |
| 85 | 28 | 24 | 18 | 22 | 24 | 35 |
| 90 | 6 | 6 | 12 | 6 | 6 | |
| 95 | 58 | 68 | 70 | 62 | 56 | 71 |
| 105 | 199 | 215 | 217 | 195 | 171 | 220 |
| 115 | 397 | 422 | 442 | 391 | 357 | 407 |
| 125 | 648 | 670 | 690 | 632 | 590 | 588 |
| 135 | 929 | 939 | 941 | 897 | 853 | 705 |
| 145 | 1138 | 1142 | 1150 | 1098 | 1074 | 704 |
| 155 | 1289 | 1293 | 1299 | 1258 | 1234 | 589 |
| 165 | 1367 | 1371 | 1385 | 1347 | 1331 | 385 |
| 175 | 1383 | 1389 | 1415 | 1377 | 1357 | 132 |
| 180 | 1385 | 1385 | 1385 | 1385 | 1385 | |

| LUMEN SUMMARY | ZONE | LUMENS | % FIXTURE |
|---------------|----------|--------|-----------|
| | 0 - 30 | 866 | 13 |
| | 0 - 40 | 1392 | 21 |
| | 0 - 60 | 2358 | 35 |
| | 0 - 90 | 2867 | 43 |
| | 90 - 120 | 698 | 11 |
| | 90 - 130 | 1286 | 19 |
| | 90 - 150 | 2695 | 40 |
| | 90 - 180 | 3801 | 57 |
| | 0 - 180 | 6668 | 100 |

CONTROL DETAILS

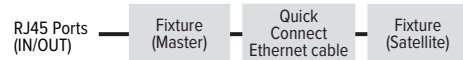
DIM



DALI

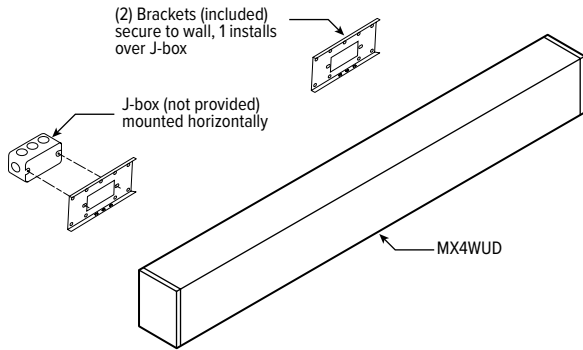


DMX



MX4WUD tunable WHITE 4" Continuous Up/Down – Wall

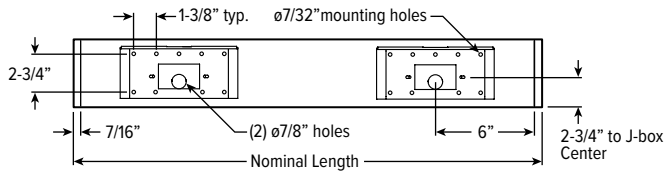
MOUNTING DETAILS



FIXTURE DETAILS

BACK VIEW

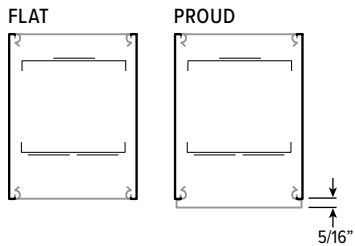
Standalone and feeder fixtures receive two mounting brackets. Joiner fixtures connect to feeder fixtures and receive one mounting bracket.



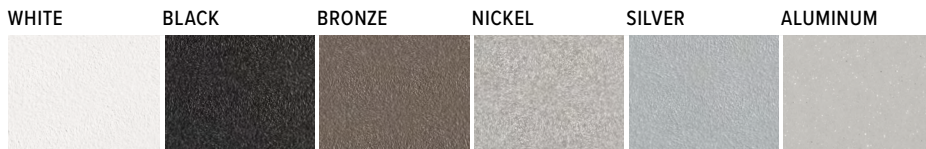
OCCUPANCY SENSOR



SHIELDING DETAILS



FINISH OPTIONS



For custom color, please specify RAL code or a manufacturer code with description. All custom colors other than RAL require two sample swatches, minimum 1" square.