

CATALOG #: _____

TYPE: _____

PROJECT: _____

FEATURES

- Williams turn-key Power over Ethernet (PoE) solution provides plug-and-play networked lighting and control
- Tunable white from 3000K to 5000K CCT, minimum 80 CRI
- Create elegant spaces with a seamless, continuous row of illumination
- Flat and proud lenses give designers a variety of looks
- Fixture attaches to wall bracket for simple installation
- Maximize energy savings with efficacies as high as 132 lm/W
- Linear extrusion contains snap-in light rails for ease of installation and maintenance
- Versatile MX4 system includes recessed, surface, suspended and in-wall mounting, see hew.com
- Diffuse acrylic lens provides uniform illumination for visual comfort
- Made Right Here™ in the USA

SYSTEM REQUIREMENTS

- Lighting system (site software)
- Gateway or alternate server (runs software)
- PoE switches or Ethernet switches and mid-span power injectors
- See hew.com/poe for details

SPECIFICATIONS

- HOUSING** – Extruded aluminum with die-cast end plates.
- SHIELDING** – Extruded, flat, diffuse acrylic lens.
- FINISH** – Textured matte white polyester TGIC powder coat bonded to phosphate-free, multi-stage pretreated metal. All parts painted after fabrication to facilitate installation, increase efficiency, and inhibit corrosion.
- ELECTRICAL** – High quality mid-power LED board. L70 > 60,000 hours per IES TM-21. Low-voltage DC fixture, to be fed by Class 2 power supply. Tunable White products use LEDs of multiple CCTs and may produce a perceptibly different shade of white from single-CCT products at the same CCT. All CCTs are within 3 MacAdam ellipses.
- MOUNTING** – Wall mount. Powder coated, die-formed C.R.S. receiving bracket mounted to fixture which attaches to galvanized, wall mounted bracket.
- LISTINGS** – cETLus conforms to UL STD 1598. Certified to CAN/CSA STD C22.2 No. 250.0. Suitable for damp locations.
- WARRANTY** – 5-year limited warranty, see hew.com/warranty.

ORDERING EXAMPLE: MX4W - 12'00 - P7/835 - F - OPTIONS - POE N

SERIES	LENGTH	LUMENS ^[1]	CRI	CCT
MX4W ^[2]	Lengths specified in feet and inches using 4" increments, 2' minimum. Example: 12'00 = 12'-0"	P7 700lm	8 80	27 2700K
			9 90 ^[3]	30 3000K
				35 3500K
				40 4000K
				50 5000K
PRODUCT BUILDER		Simplify ordering & layout design with the Williams Linear Product Builder at hew.com/product-builder		
			TW Tunable white (80 CRI, 3000K–5000K)	

SHIELDING	OPTIONS ^[4]	CONTROL ^[5]
F Flat, diffuse acrylic	EM/CP12 Remote mount 12-watt Iota emergency battery ^[7]	POE N Power over Ethernet network node
P Proud, diffuse acrylic with 5/16" drop ^[6]		POE D Power over Ethernet device node ^[8]

NOTES

- Nominal lumens per foot output based on F shielding and 3500K for single CCT and 4000K for TW. Actual lumens may vary ±5%. See page 2 for FIXTURE PERFORMANCE DATA.
- Up or down orientation is determined during installation.
- Extended lead times may apply. Consult factory for availability.
- Not available with Tunable White
- See page 3 for FINISH OPTIONS. Custom colors available upon request. See hew.com/poe for compatible sensors and switches.
- For additional PoE info, see hew.com/poe.
- See page 3 for SHIELDING DETAILS.
- Requires one additional category cable run to switch. See page 3 for REMOTE MOUNT DETAILS.
- Not available with fixtures over 40W.



MX4W PoE | tunable WHITE

4" Continuous – Wall

FIXTURE PERFORMANCE DATA

STANDARD - DOWNLIGHT (PER FOOT)

DELIVERED LUMENS	WATTAGE	EFFICACY (lm/W)
707	6	121

TUNABLE WHITE - DOWNLIGHT (PER FOOT)

DELIVERED LUMENS	WATTAGE	EFFICACY (lm/W)
703	5	128

STANDARD - UPLIGHT (PER FOOT)

DELIVERED LUMENS	WATTAGE	EFFICACY (lm/W)
728	6	124

TUNABLE WHITE - UPLIGHT (PER FOOT)

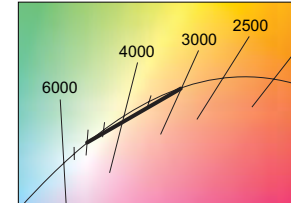
DELIVERED LUMENS	WATTAGE	EFFICACY (lm/W)
724	5	132

MULTIPLIER TABLES

STANDARD	
COLOR TEMPERATURE	
CCT	CONVERSION FACTOR
2700K	0.97
3000K	0.99
3500K	1.00
4000K	1.03
5000K	1.06

TUNABLE WHITE	
COLOR TEMPERATURE	
CCT	CONVERSION FACTOR
3000K	0.95
3500K	0.98
4000K	1.00
5000K	0.96

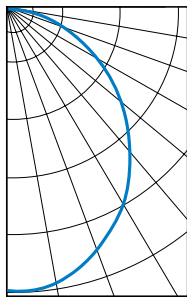
80 CRI	
CCT	CONVERSION FACTOR
2700K	0.82
3000K	0.83
3500K	0.84
4000K	0.86
5000K	0.90



- Photometrics tested in accordance with IESNA LM-79. Results shown are based on 25°C ambient temperature.
- Standard results based on 3500K standard, 80 CRI, actual lumens may vary ±5%.
- Tunable white results based on 4000K standard, 80 CRI, actual lumens may vary ±5%.
- Use multiplier tables to calculate additional options.

PHOTOMETRY

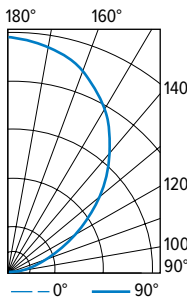
MX4WD-4'00-P7/835-F-POE N Total Luminaire Output: 2828 lumens; 23.4 Watts | Efficacy: 121 lm/W | 80 CRI; 3500K CCT



VERTICAL ANGLE	HORIZONTAL ANGLE			ZONAL LUMENS
	0°	45°	90°	
0	1117	1117	1117	
5	1140	1108	1097	105
15	1102	1057	1039	299
25	986	955	932	439
35	854	813	798	512
45	693	662	637	512
55	518	494	463	440
65	338	318	304	316
75	159	153	151	165
85	25	31	28	39
90	0	0	0	

LUMEN SUMMARY	ZONE	LUMENS	% FIXTURE
	0 - 30	843	30
0 - 40	1356	48	
0 - 60	2308	82	
0 - 90	2828	100	
0 - 180	2828	100	

MX4WU-4'00-P7/835-F-POE N Total Luminaire Output: 2912 lumens; 23.4 Watts | Efficacy: 124 lm/W | 80 CRI; 3500K CCT



VERTICAL ANGLE	HORIZONTAL ANGLE			ZONAL LUMENS
	0°	45°	90°	
90	0	0	0	
95	17	16	14	24
105	138	105	88	118
115	327	244	207	255
125	550	441	369	408
135	798	700	588	534
145	1017	951	861	583
155	1188	1125	1079	516
165	1281	1245	1214	351
175	1332	1300	1284	124
180	1318	1318	1318	

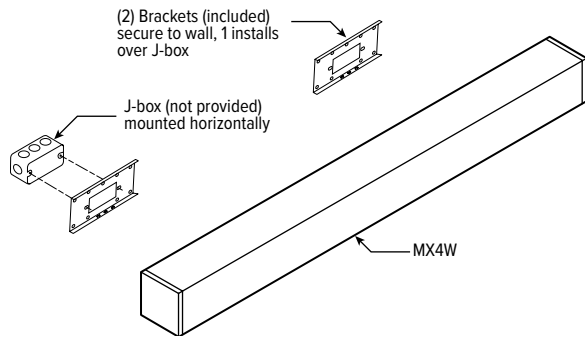
LUMEN SUMMARY	ZONE	LUMENS	% FIXTURE
	90 - 120	397	14
90 - 130	805	28	
90 - 150	1922	66	
90 - 180	2912	100	
0 - 180	2912	100	



MX4W PoE | tunable WHITE

4" Continuous – Wall

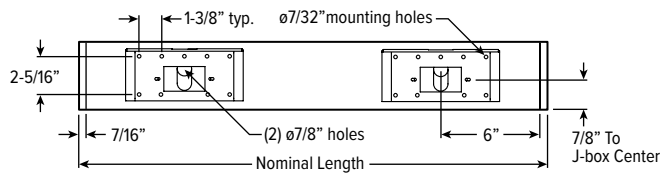
MOUNTING DETAILS



FIXTURE DETAILS

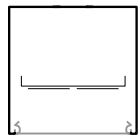
BACK VIEW

Standalone and feeder fixtures receive two mounting brackets. Joiner fixtures connect to feeder fixtures and receive one mounting bracket.

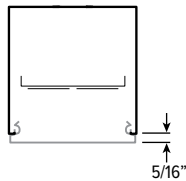


SHIELDING DETAILS

FLAT

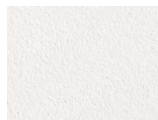


PROUD

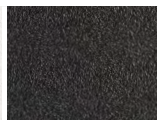


FINISH OPTIONS

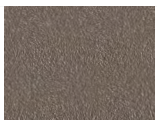
WHITE



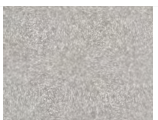
BLACK



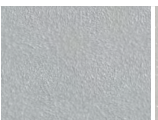
BRONZE



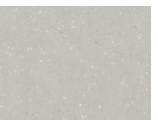
NICKEL



SILVER



ALUMINUM



For custom color, please specify RAL code or a manufacturer code with description. All custom colors other than RAL require two sample swatches, minimum 1" square.

REMOTE MOUNT DETAILS

Includes 2' plenum-rated 18ga. solid cable. Remote box can be installed in:

- Above ceiling grid
- Remote closet (within 100ft)
- Surface below ceiling

EM OPTION

