

CATALOG #: _____

TYPE: _____

PROJECT: _____

FEATURES

- Tunable white from 3000K to 5000K CCT, minimum 80 CRI
- Create elegant spaces with a seamless, continuous row of illumination
- Flat and proud lenses give designers a variety of looks
- Fixture attaches to wall bracket for simple installation
- Maximize energy savings with efficacies as high as 126 lm/W
- Linear extrusion contains snap-in light rails for ease of installation and maintenance
- Versatile MX4 system includes recessed, surface, suspended and in-wall mounting, see hew.com
- Diffuse acrylic lens provides uniform illumination for visual comfort
- Made Right Here™ in the USA

ORDERING EXAMPLE: MX4W - 12'00 - L8/8TW - F - OPTIONS - DALI - UNV

SERIES	LENGTH	LUMENS ^[1]	COLOR
MX4W ^[2]	Lengths specified in feet and inches using 4" increments, 2' minimum. Example: 12'00 = 12'-0"	L8 800lm	8TW Tunable white (80 CRI, 3000K-5000K)

PRODUCT BUILDER
Simplify ordering & layout design with the Williams Linear Product Builder at hew.com/product-builder

SHIELDING	OPTIONS ^[3]	CONTROL ^[4]	VOLTAGE
F Flat, diffuse acrylic	EM/7WRM Remote mount 7-watt emergency battery ^[6]	DALI Driver prewired for DALI applications	120 120V
P Proud, diffuse acrylic with 5/16" drop ^[5]	EM/10W 10-watt emergency battery ^[7]	DIM (1) 0-10V signal to control dimming (1) 0-10V signal to control CCT	277 277V
	EM/10WRM Remote mount 10-watt emergency battery ^[8]	DMX Driver prewired for DMX applications	UNV 120-277V
	OCC ___ Factory-installed occupancy sensor ^[9] : OCCWS FS-355-L6		

SPECIFICATIONS

- **HOUSING** – Extruded aluminum with die-cast end plates.
- **SHIELDING** – Extruded, flat, diffuse acrylic lens.
- **FINISH** – Textured matte white polyester TGIC powder coat bonded to phosphate-free, multi-stage pretreated metal. All parts painted after fabrication to facilitate installation, increase efficiency, and inhibit corrosion.
- **ELECTRICAL** – High quality mid-power LED board. L70 > 60,000 hours per IES TM-21. Tunable White products use LEDs of multiple CCTs and may produce a perceptibly different shade of white from single-CCT products at the same CCT. All CCTs are within 3 MacAdam ellipses.
- **MOUNTING** – Wall mount. Powder coated, die-formed C.R.S. receiving bracket mounted to fixture which attaches to galvanized, wall mounted bracket.
- **LISTINGS** – cETLus conforms to UL STD 1598. Certified to CAN/CSA STD C22.2 No. 250.0. Suitable for damp locations.
- **WARRANTY** – 5-year limited warranty, see hew.com/warranty.

NOTES

- ¹ Lumens per foot output based on 4000 CCT and F shielding. Actual lumens per foot may vary +/-5%. See page 2 for FIXTURE PERFORMANCE DATA.
- ² Up or down orientation is determined during installation.
- ³ See page 3 for FINISH OPTIONS. Custom colors available upon request. See Technical Info for [Power Entry](#) details.
- ⁴ See page 2 for CONTROL DETAILS.
- ⁵ See page 3 for SHIELDING DETAILS.
- ⁶ Must be remote mounted for fixtures less than 4'.
- ⁷ Not available with fixtures less than 4'.
- ⁸ Must be remote mounted for fixtures less than 4'.
- ⁹ Must specify right or left orientation. See Product Builder at hew.com. Utilizes 4" of housing at end of fixture. See page 3 for FIXTURE DETAILS. 120V or 277V only. Recommended for use in downlight orientation only.



MX4W tunable WHITE

4" Continuous – Wall

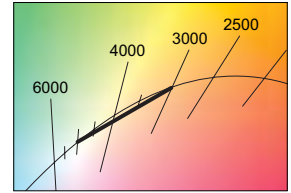
FIXTURE PERFORMANCE DATA

DOWN (PER FOOT)			UP (PER FOOT)		
DELIVERED LUMENS	WATTAGE	EFFICACY (lm/W)	DELIVERED LUMENS	WATTAGE	EFFICACY (lm/W)
821	6.7	123	846	6.7	126

- Photometrics tested in accordance with IESNA LM-79. Results shown are based on 25°C ambient temperature.
- Wattage shown is average for 120V through 277V input.
- Results based on 4000K, 80 CRI, actual lumens may vary +/-5%
- Use multiplier table to calculate additional options.

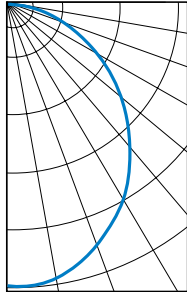
MULTIPLIER TABLE

CCT	CONVERSION FACTOR	
	LUMENS	WATTAGE
3000K	0.95	1.04
3500K	0.98	1.02
4000K	1.00	1.00
5000K	0.96	1.04



PHOTOMETRY

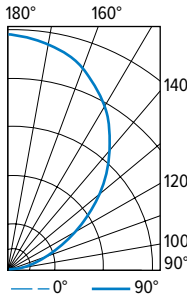
MX4WD-4'00-L8/8TW-F-DALI Total Luminaire Output: 3284 lumens; 26.8 Watts | Efficacy: 123 lm/W | 80 CRI; 3500K CCT



VERTICAL ANGLE	HORIZONTAL ANGLE			ZONAL LUMENS
	0°	45°	90°	
0	1297	1297	1297	
5	1324	1287	1273	122
15	1280	1228	1206	347
25	1145	1109	1083	510
35	992	944	927	595
45	805	768	740	595
55	602	573	538	511
65	392	369	353	367
75	185	177	176	192
85	29	36	33	45
90	0	0	0	

LUMEN SUMMARY	ZONE	LUMENS	% FIXTURE
	0 - 30	979	30
	0 - 40	1574	48
	0 - 60	2680	82
	0 - 90	3284	100
	0 - 180	3284	100

MX4WU-4'00-L8/8TW-F-DALI Total Luminaire Output: 3384 lumens; 26.8 Watts | Efficacy: 126 lm/W | 80 CRI; 3500K CCT

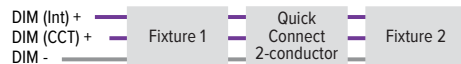


VERTICAL ANGLE	HORIZONTAL ANGLE			ZONAL LUMENS
	0°	45°	90°	
90	0	0	0	
95	20	19	17	28
105	160	122	102	137
115	380	284	240	297
125	640	513	428	474
135	927	813	683	620
145	1182	1105	1000	677
155	1381	1307	1253	600
165	1489	1447	1411	407
175	1548	1511	1492	144
180	1531	1531	1531	

LUMEN SUMMARY	ZONE	LUMENS	% FIXTURE
	90 - 120	462	14
	90 - 130	936	28
	90 - 150	2233	66
	90 - 180	3384	100
	0 - 180	3384	100

CONTROL DETAILS

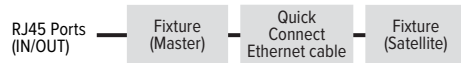
DIM



DALI



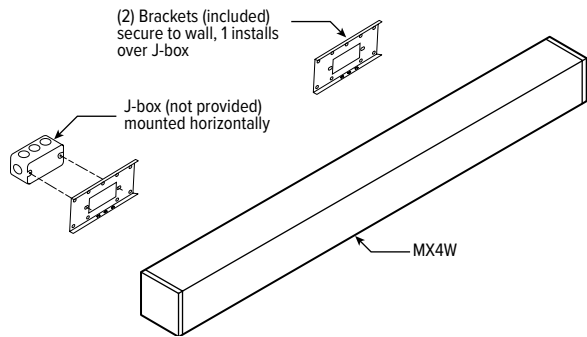
DMX



MX4W tunable WHITE

4" Continuous – Wall

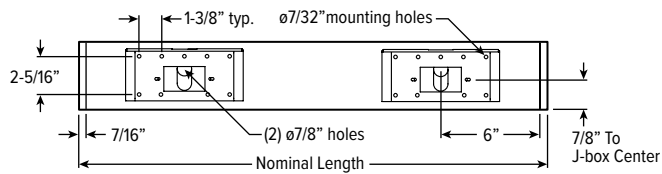
MOUNTING DETAILS



FIXTURE DETAILS

BACK VIEW

Standalone and feeder fixtures receive two mounting brackets. Joiner fixtures connect to feeder fixtures and receive one mounting bracket.

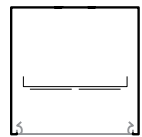


OCCUPANCY SENSOR

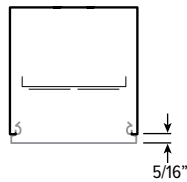


SHIELDING DETAILS

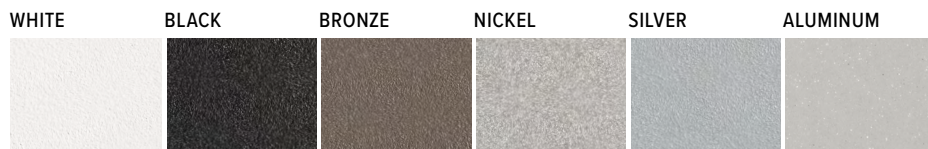
FLAT



PROUD



FINISH OPTIONS



For custom color, please specify RAL code or a manufacturer code with description. All custom colors other than RAL require two sample swatches, minimum 1" square.

