

PXG-42 shown

CATALOG #: \_\_\_\_\_

TYPE: \_\_\_\_\_

PROJECT: \_\_\_\_\_

**FEATURES**

- Tunable white from 3000K to 5000K CCT, minimum 80 CRI
- Wide asymmetric distribution produces ample general illumination in high-ceiling environments
- Sleek, linear design incorporates clean lines, slim styling, and a continuous row of light
- Allows for 90° run connections in both inside and outside corner installs
- Quick and easy installation with wall mounted bracket providing multiple pre-drilled screw locations and a quick hang feature for the fixture
- Solutions for both grid and drywall ceilings
- Adjustable extensions allow for a perfect fit to meet adjacent walls and create corners
- Diffuse acrylic lens shields LEDs from view
- Made Right Here® in the USA

**SPECIFICATIONS**

- **HOUSING** – Formed sheet metal and aluminum.
- **FINISH** – Textured matte white polyester TGIC powder coat bonded to phosphate-free, multistage pretreated metal. All parts painted after fabrication to facilitate installation, increase efficiency, and inhibit corrosion.
- **ELECTRICAL** – High quality mid-power LED board. L70 > 50,000 hours per IES TM-21. Tunable White products use LEDs of multiple CCTs and may produce a perceptibly different shade of white from single-CCT products at the same CCT. All CCTs are within 3 MacAdam ellipses.
- **MOUNTING** – Wall mount rail, predrilled with wall screw locations, with quick hang feature.
- **LABELS** – cETLus conforms to UL STD 1598. Certified to CAN/CSA STD C22.2 No. 250.0. Suitable for damp locations.
- **WARRANTY** – 5-year limited warranty, see [hew.com/warranty](http://hew.com/warranty).

**ORDERING EXAMPLE: PX G - 42 - 14'08 - L10/8TW - S - L90IN/R45OUT - OPTIONS - DIM - UNV**

**ORDERING INFO**

SERIES	CEILING TYPE	WIDTH	HEIGHT	LENGTH
PX	G Grid F Drywall	4 4" 6 6"	2 2"	Lengths specified in feet and inches using 1" increments, 2" minimum. Example: 14'08 = 14'-8"

**PRODUCT BUILDER**

Simplify ordering & layout design with the Williams Linear Product Builder at [hew.com/product-builder](http://hew.com/product-builder)

LUMEN PACKAGE <sup>[1]</sup>	COLOR	DISTRIBUTION	LEFT END TYPE	RIGHT END TYPE
L4 400lm	8TW Tunable white (80 CRI, 3000K-5000K)	S Slot	LWALL Wall	RWALL Wall
L7 700lm			LCAP Cap	RCAP Cap
L10 1000lm			L90IN 90° inward L90OUT 90° outward	R90IN 90° inward R90OUT 90° outward

OPTIONS	DRIVER	VOLTAGE
EM/10WLP Low-profile 10-watt emergency battery <sup>[2]</sup>	DALI Driver prewired for DALI applications	120 120V 277 277V
EM/10WRM Remote mount 10-watt emergency battery <sup>[3]</sup>	DIM (1) 0-10V signal to control dimming (1) 0-10V signal to control CCT DMX Driver prewired for DMX applications	UNV 120-277V

**NOTES**

<sup>1</sup> Nominal lumens per foot output based on 4000 CCT. Actual lumens per foot may vary +/-5%. See page 2 for FIXTURE PERFORMANCE DATA.

<sup>2</sup> Minimum 4' fixture; 120V-277V only.

<sup>3</sup> Required for fixtures below 4'; 120V-277V only.

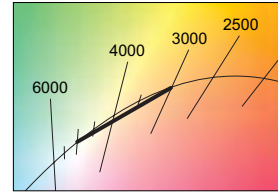


**FIXTURE PERFORMANCE DATA**

	WIDTH & HEIGHT	DELIVERED LUMENS	WATTAGE PER FOOT	EFFICACY (lm/W)
L4	42	390	3.6	108.3
	62	395	3.5	112.9
L7	42	682	6.5	104.9
	62	691	6.4	108.0
L10	42	974	9.8	99.4
	62	987	9.5	103.9

**MULTIPLIER TABLE**

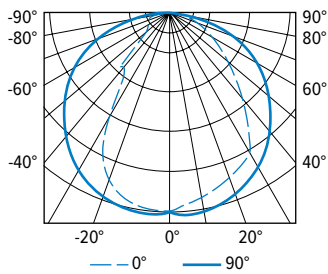
CCT	CONVERSION FACTOR	
	LUMENS	WATTAGE
3000K	0.95	1.04
3500K	0.98	1.02
4000K	1.00	1.00
5000K	0.96	1.04



- Photometrics tested in accordance with IESNA LM-79. Results shown are based on 25°C ambient temperature.
- Wattage shown is average for 120V through 277V input.
- Results based on 4000K, 80 CRI, actual lumens may vary +/-5%
- Use multiplier table to calculate additional options.

**PHOTOMETRY**

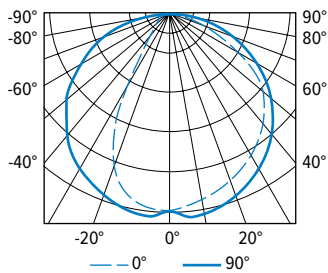
**PXF-42-03'08-L7/8TW-S-LCAP/RCAP-DIM-UNV** Total Luminaire Output: 2503 lumens; 23.9 Watts | Efficacy: 104.7 lm/W | 80 CRI; 3500K CCT



CANDLEPOWER DISTRIBUTION	VERTICAL ANGLE	HORIZONTAL ANGLE					ZONAL LUMENS
		0°	45°	90°	135°	180°	
	0	1115	1115	1115	1115	1115	1115
	5	1085	1106	1140	1127	1108	106
	15	1030	1059	1114	1087	1055	302
	25	958	981	1049	990	863	448
	35	790	878	950	749	408	494
	45	539	690	818	352	175	441
	55	352	438	664	146	134	347
	65	202	248	474	103	121	228
	75	75	99	259	73	72	115
	85	0	6	24	17	16	22
	90	0	0	0	1	0	

LUMEN SUMMARY	ZONE	LUMENS	% FIXTURE
	0 - 30	856	34
	0 - 40	1350	54
	0 - 60	2138	85
	0 - 90	2503	100
	0 - 180	2503	100

**PXF-62-03'08-L7/8TW-S-LCAP/RCAP-DIM-UNV** Total Luminaire Output: 2536 lumens; 23.5 Watts | Efficacy: 107.9 lm/W | 80 CRI; 3500K CCT

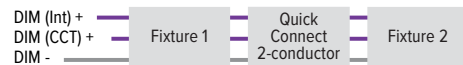


CANDLEPOWER DISTRIBUTION	VERTICAL ANGLE	HORIZONTAL ANGLE					ZONAL LUMENS
		0°	45°	90°	135°	180°	
	0	1120	1120	1120	1120	1120	
	5	1092	1107	1154	1130	1109	106
	15	1039	1058	1124	1080	1027	301
	25	967	980	1058	952	735	439
	35	881	875	961	666	226	477
	45	755	757	826	219	108	444
	55	595	600	667	92	79	374
	65	312	389	469	61	73	250
	75	107	144	242	50	54	125
	85	0	3	17	14	13	21
	90	0	0	0	0	0	

LUMEN SUMMARY	ZONE	LUMENS	% FIXTURE
	0 - 30	846	33
	0 - 40	1323	52
	0 - 60	2141	84
	0 - 90	2536	100
	0 - 180	2536	100

**CONTROL DETAILS**

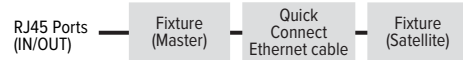
**DIM**



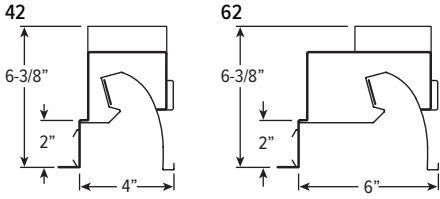
**DALI**



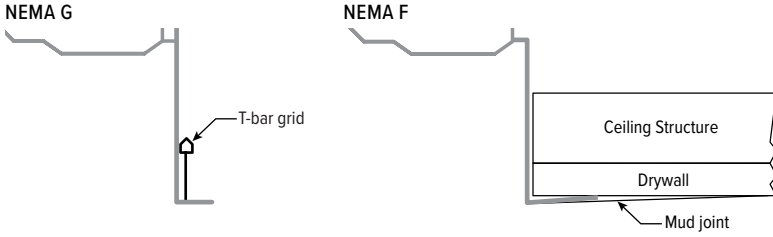
**DMX**



**CROSS SECTIONS**



**CEILING TYPE DETAILS**



**END TYPE DETAILS**

