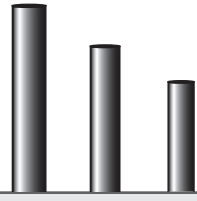


ROUND STRAIGHT ALUMINUM POLE

RSA



SUBMITTAL:

JOB:

TYPE:

EXAMPLE: **VM - RSA - 080 - 0400 - 125 - T238 - DBR - AB - OPTIONS**

PREFIX SERIES HEIGHT SHAFT DIAMETER WALL THICKNESS FIXTURE MOUNTING FINISH OPTIONS ANCHOR BOLTS OPTIONS

SERIES

RSA — The RSA Series round straight aluminum pole features one-piece construction in heights up to 30'.

Height, shaft diameter, and wall thickness combinations are limited to those specified in the Load and Dimensional Data table on pages 1C-1D.

HEIGHT (Must specify)

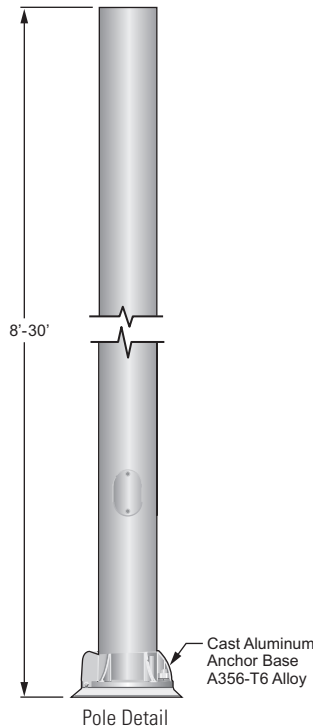
080	8'-0" (.125" and .188" wall thickness only)
100	10'-0" (.125" and .188" wall thickness only)
120	12'-0"
140	14'-0"
160	16'-0"
180	18'-0"
200	20'-0"
250	25'-0" (.156" and .188" wall thickness only)
300'	30'-0" (.188" wall thickness only)

SHAFT DIAMETER (Must specify)

0400	4.00" (up to 16' only)
0450	4.50" (up to 25' only)
0500	5.00" (10' - 20' only)
0600	6.00" (16' - 30' only)

WALL THICKNESS (Must specify)

125	0.125" (up to 20' only)
156	0.156" (12' - 25' only)
188	0.188"



RSA SERIES

SHAFT — The pole shaft is extruded from seamless alloy aluminum.

POLE TOP — A pole top tenon (must specify size) is provided for top mount luminaire or Williams' pole top assembly. A removable pole cap is provided for poles receiving drilling patterns for side-mount luminaire arm assemblies.

HANDHOLE — A covered handhole with hardware and grounding provision are provided.

ANCHOR BASE — The anchor base is cast from 356 alloy aluminum. The completed assembly is heat-treated to a T6 temper. Aluminum nut covers are included with each anchor base unless otherwise specified.

FIXTURE MOUNTING

Luminaires may be mounted on tenons or shaft may be drilled to specifications. When poles are drilled for luminaire mounting, black plastic pole top caps will be supplied. See Williams' Pole Top Assemblies for various fixture mounting tenon and arm assemblies.

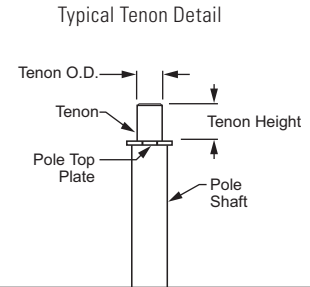
RADIAL INDEX

The radial index references how parts are oriented around the shaft. A degree measurement is used from a base point. The standard base point of reference is the handhole. Degrees are measured in a clockwise motion as viewed from the top of the shaft.

FIXTURE MOUNTING (Must specify)

POLE TOP MOUNT

T238	2-3/8" O.D. x 4" round tenon (use with Williams' Pole Top Tenon Mounts)
T278	2-7/8" O.D. x 4" round tenon
T33	3" O.D. x 3" round tenon (use with Williams' Historic Pole Top Assemblies)
T310	3-1/2" O.D. x 10" round tenon (use with Williams' AVPT60 Decorative Pole Top Assembly only)
T312	3-1/2" O.D. x 12" round tenon (use with Williams' AVPT Decorative Pole Top Assemblies)
TC_____	Custom round tenon (must specify tenon diameter (O.D.) and height, consult factory)

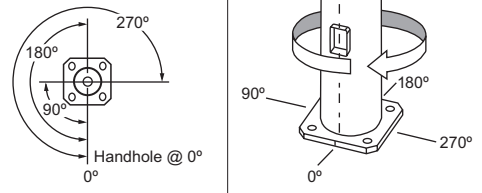


DRILLED SIDE MOUNT

Must specify drilling location using codes below. See radial index for clarification.

EXAMPLE: sm/s
(side mount drill, single fixture located at 0°)

Radial Index



SM/S

Side mount drill/single 0°
(located at 0°)



SM/D90

Side mount drill/double 90°
(located at 0° and 90°)



SM/D180

Side mount drill/double 180°
(located at 0° and 180°)



SM/T90

Side mount drill/triple 90°
(located at 0°, 90°, and 180°)



SM/T120

Side mount drill/triple 120°
(located at 0°, 120°, and 240°)



SM/Q90

Side mount drill/quad 90°
(located at 0°, 90°, 180°, and 270°)

FINISH OPTIONS

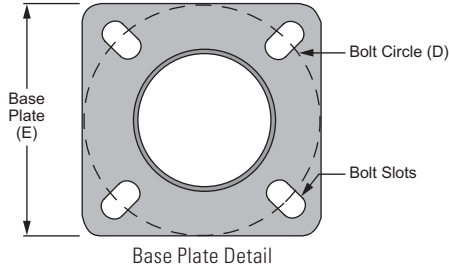
Polyester powder coat applied over chromate pre-treatment.

FINISH OPTIONS (Must specify)

BLK	Black (RAL #9004)	GRN	Green (RAL #6005)
DBZ	Dark bronze	SLV	Satin aluminum (RAL #9006)
DBR	Medium bronze	WHT	White (RAL #9003)
GRAY	Standard gray	RAL#_____	Specify custom color

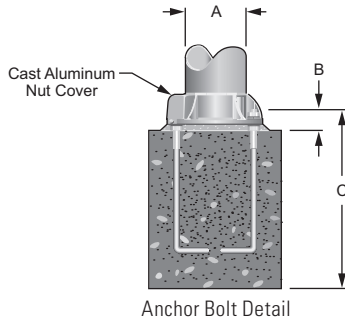
ANCHOR BOLTS (Must specify)

AB	Anchor bolts (4 each, shipped with pole)
LAB	Less anchor bolts
PAB	Pre-shipped anchor bolts (4 each)



ANCHOR BOLTS

Anchor bolts conform to ASTM F1554 Grade 55 and are provided with two hex nuts and two flat washers. Bolts have an "L" bend on one end and are galvanized a minimum of 12" on the threaded end.



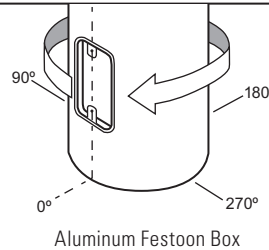
ANCHORAGE DATA (All measurements in inches)

BASE O.D. (A)	WALL THK.	BASE PLATE				ANCHOR BOLTS			
		BOLT CIRCLE (D)		SQ. (E)	THK.	DIA. x LENGTH x HOOK (C)	PROJ. (B)	±	
		DIA.	±						
4	0.125	7.50	0.75	8.91	0.63	0.75 x 17.00 x 3.00	3.25	N/A	
	0.188	7.84	0.78	9.26	0.63	0.75 x 17.00 x 3.00	3.25	N/A	
4.5	0.125	8.63	0.88	9.61	0.63	0.75 x 17.00 x 3.00	3.25	N/A	
	0.188	8.63	0.88	9.61	0.63	0.75 x 17.00 x 3.00	3.25	N/A	
5	0.156	9.50	0.75	10.32	0.63	0.75 x 17.00 x 3.00	3.50	N/A	
	0.188	9.50	0.75	10.32	0.63	0.75 x 17.00 x 3.00	3.50	N/A	

OPTIONS

FS Festoon box only

NOTE: Casting only. Outlet, cover, and hardware by others. The festoon box is located above the access door at 0°, approximately 41" above ground level.



SBC Spun aluminum base cover

VB1 Vibration damper (factory installed)

VB2 Vibration damper (field installed, 10'-20')

VB3 Vibration damper (field installed 22'-30')

LOAD AND DIMENSIONAL DATA (Continued on back)

NOMINAL MOUNTING HEIGHT	CATALOG NUMBER	POLE DIMENSIONS				MAXIMUM LUMINAIRE WT. (LBS)	MAXIMUM EPA (SQ FT) ²				
		POLE HEIGHT	SHAFT O.D.	WALL THK.	STRUCT. WT. (LBS)		70 MPH	80 MPH	90 MPH	100 MPH	110 MPH
8'	RSA-080-0400-125	8'	4.00"	0.125"	20	75	13.6	10.1	7.7	6.1	5.0
	RSA-080-0450-125		4.50"	0.125"	22	75	17.5	13.1	10.2	8.1	6.7
	RSA-080-0450-188		4.50"	0.188"	30	75	26.1	19.7	15.3	12.3	10.1
10'	RSA-100-0400-125	10'	4.00"	0.125"	23	75	10.7	7.9	5.9	4.5	3.7
	RSA-100-0450-125		4.50"	0.125"	26	150	13.8	10.1	7.8	6.2	5.0
	RSA-100-0500-125		5.00"	0.125"	28	150	17.5	13.0	10.2	8.1	6.6
	RSA-100-0450-188		4.50"	0.188"	36	150	21.0	15.7	12.1	9.7	7.9

² Effective Projected Area (EPA) calculations are based on a 1.3 Gust Factor. Variations from sizes listed above available upon inquiry. Satisfactory performance of lighting poles is dependent upon the pole being properly attached to a supporting foundation of adequate design. H.E. Williams, Inc. does not offer recommendations for foundations. See Williams Outdoor Information Section, page 19A, for Wind Map and EPA information.

LOAD AND DIMENSIONAL DATA (Continued)

NOMINAL MOUNTING HEIGHT	CATALOG NUMBER	POLE DIMENSIONS				MAXIMUM LUMINAIRE WT. (LBS)	MAX. EPA (SQ FT) ²				
		POLE HEIGHT	TOP O.D.	WALL THK.	STRUCT. WT. (LBS)		70 MPH	80 MPH	90 MPH	100 MPH	110 MPH
12'	RSA-120-0400-125	12'	4.00"	0.125"	27	75	8.6	6.1	4.4	3.3	2.6
	RSA-120-0450-125		4.50"	0.125"	30	75	11.4	8.2	6.2	4.9	3.9
	RSA-120-0500-125		5.00"	0.125"	33	150	14.2	10.4	8.1	6.4	5.2
	RSA-120-0450-188		4.50"	0.188"	42	75	17.5	12.9	9.9	7.9	6.4
	RSA-120-0500-156		5.00"	0.156"	39	150	18.1	13.4	10.5	8.3	6.8
	RSA-120-0500-188		5.00"	0.188"	46	150	22.0	16.4	12.8	10.3	8.4
14'	RSA-140-0400-125	14'	4.00"	0.125"	31	150	6.4	4.3	3.0	2.1	1.6
	RSA-140-0450-125		4.50"	0.125"	34	150	8.8	6.1	4.5	3.5	2.7
	RSA-140-0500-125		5.00"	0.125"	37	150	11.5	8.3	6.3	5.0	4.0
	RSA-140-0450-188		4.50"	0.188"	48	150	14.1	10.2	7.7	6.1	4.9
	RSA-140-0500-156		5.00"	0.156"	45	150	14.9	10.9	8.4	6.6	5.4
	RSA-140-0500-188		5.00"	0.188"	53	150	18.2	13.4	10.4	8.3	6.7
16'	RSA-160-0400-125	16'	4.00"	0.125"	34	150	4.7	3.0	1.9	1.1	0.8
	RSA-160-0450-125		4.50"	0.125"	38	150	6.7	4.5	3.1	2.4	1.8
	RSA-160-0500-125		5.00"	0.125"	42	150	9.0	6.3	4.8	3.7	2.9
	RSA-160-0450-188		4.50"	0.188"	54	150	11.3	8.0	5.9	4.6	3.7
	RSA-160-0500-156		5.00"	0.156"	51	150	11.9	8.5	6.5	5.1	4.1
	RSA-160-0500-188		5.00"	0.188"	59	150	14.8	10.7	8.3	6.5	5.3
	RSA-160-0600-156		6.00"	0.156"	60	150	19.0	14.3	11.1	8.8	7.2
	RSA-160-0600-188		6.00"	0.188"	71	150	23.3	17.6	13.7	10.9	8.9
18'	RSA-180-0500-125	18'	5.00"	0.125"	46	150	7.0	4.7	3.5	2.6	2.0
	RSA-180-0450-188		4.50"	0.188"	60	150	9.0	6.2	4.4	3.4	2.6
	RSA-180-0500-156		5.00"	0.156"	56	150	9.5	6.6	5.0	3.8	3.0
	RSA-180-0500-188		5.00"	0.188"	66	150	12.0	8.5	6.5	5.1	4.0
	RSA-180-0600-188		6.00"	0.188"	79	150	19.4	14.6	11.3	9.0	7.3
20'	RSA-200-0500-125	20'	5.00"	0.125"	51	150	5.2	3.3	2.3	1.7	1.2
	RSA-200-0450-188		4.50"	0.188"	65	150	7.1	4.6	3.1	2.3	1.8
	RSA-200-0500-156		5.00"	0.156"	62	150	7.5	5.0	3.7	2.8	2.1
	RSA-200-0500-188		5.00"	0.188"	73	150	9.7	6.7	5.0	3.9	3.0
	RSA-200-0600-156		6.00"	0.156"	74	150	12.9	9.5	7.3	5.7	4.6
	RSA-200-0600-188		6.00"	0.188"	87	150	16.2	12.1	9.3	7.3	5.9
25'	RSA-250-0450-188 ³	25'	4.50"	0.188"	80	150	3.4	1.6	0.6	0.3	N/A
	RSA-250-0600-156 ³		6.00"	0.156"	91	150	7.6	5.4	4.0	3.0	2.3
	RSA-250-0600-188		6.00"	0.188"	107	150	10.1	7.4	5.5	4.2	3.3
30'	RSA-300-0600-188 ³	30'	6.00"	0.188"	128	200	5.5	3.8	2.6	1.8	1.3

² Effective Projected Area (EPA) calculations are based on a 1.3 Gust Factor. Variations from sizes listed above available upon inquiry. Satisfactory performance of lighting poles is dependent upon the pole being properly attached to a supporting foundation of adequate design. H.E. Williams, Inc. does not offer recommendations for foundations. See Williams Outdoor Information Section, page 19A, for Wind Map and EPA information.

³ Pole includes factory-installed vibration damper.

NOTES

- Pole installations in various parts of the country perform satisfactorily; however, in select locations destructive vibration can occur. H.E. Williams, Inc. is not responsible for vibration induced fatigue damage.
- H.E. Williams, Inc. warrants this product to be free from defects in materials and workmanship. Any defective part returned within one year from the date of delivery of the goods will be repaired or replaced without charge, F.O.B. factory.
This warranty specifically excludes fatigue or similar phenomena resulting from induced vibration, harmonic oscillation or resonance associated with movement of air currents around the product.
The above warranties are given in lieu of all other warranties express or implied, including without limitation, the warranty of merchantability and the warranty of suitability for a particular purpose. It is expressly stated that H.E. Williams, Inc. assumes no liability for consequential or liquidated damages arising out of a breach of the sale, including any warranties arising therefrom, and buyer's remedy shall be limited to repair or replacement of defective parts as described above.
Any action for the breach under a sale including any warranties arising therefrom must be commenced within one year after the cause of action accrues.

