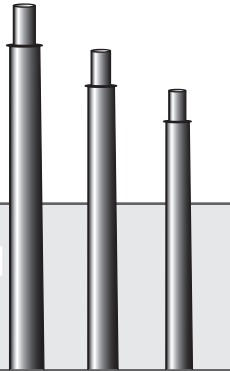


ROUND TAPERED STEEL POLE – LIGHT DUTY

RTS



SUBMITTAL:

JOB:

TYPE:

EXAMPLE:

VM - RTS

▼
PREFIX SERIES

200 - 0590 - 11

▼ ▼ ▼
HEIGHT SHAFT BASE WALL
 DIAMETER THICKNESS

T238 - DBR - AB - OPTIONS

▼ ▼ ▼ ▼
FIXTURE FINISH ANCHOR OPTIONS
MOUNTING OPTIONS BOLTS

SERIES

RTS — The RTS Series round tapered steel pole is designed for 2-3/8" tenon mount standard and features one-piece construction in heights up to 50'.

Height, shaft base diameter, and wall thickness combinations are limited to those specified in the Load and Dimensional Data table on page 5D.

HEIGHT (Must specify)

200¹	20'-0" ¹
250	25'-0"
300	30'-0"
350¹	35'-0" ¹
390	39'-0"
450	45'-0"
500	50'-0"

¹ 11-gauge only.

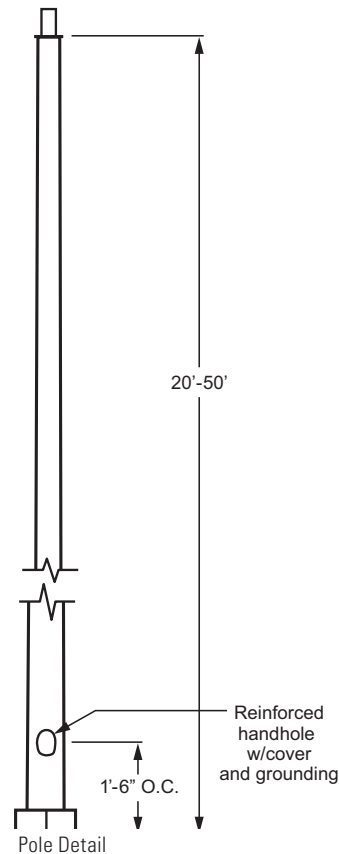
SHAFT BASE DIAMETER (Must specify)

20' POLE		39' POLE	
0590²	5.90" ²	0782	7.82"
0650	6.50"	0900	9.00"
25' POLE		45' POLE	
0590²	5.90" ²	1000	10.00"
0700	7.00"		
30' POLE		50' POLE	
0660	6.60"	1000	10.00"
0800	8.00"		
35' POLE			
0730	7.30"		
0850	8.50"		
0950	9.50"		

² 3" x 5" nominal handhole - all others 4" x 6.5" nominal.

WALL THICKNESS (Must specify)

7	7-gauge (0.1793")
11	11-gauge (0.1196")



RTS SERIES

SHAFT — The pole shaft conforms to ASTM A595 Grade A or A572 Grade 55 with a constant linear taper of 0.14 in/ft.

POLE TOP — A pole top plate and tenon (must specify size) are provided for top mount luminaire or Williams' pole top assembly.

HANDHOLE — A covered handhole and grounding provision with hardware are provided.

FULL BASE COVER — The two-piece standard full base cover is fabricated from ABS plastic.

ANCHOR BASE — The anchor base (base plate) conforms to ASTM A36.

HARDWARE — All structural fasteners are galvanized high strength carbon steel. All non-structural fasteners are galvanized or zinc-plated carbon steel or stainless steel.

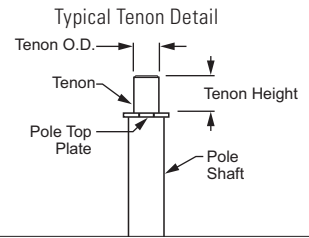
FIXTURE MOUNTING

Designed for pole top tenon. See Williams' Pole Top Assemblies for various fixture mounting tenon and arm assemblies.

FIXTURE MOUNTING (Must specify)

POLE TOP MOUNT

T238	2-3/8" O.D. x 4" round tenon (use with Williams' Pole Top Tenon Mounts)
T278	2-7/8" O.D. x 4" round tenon
T33	3" O.D. x 3" round tenon (use with Williams' Historic Pole Top Assemblies)
T312	3-1/2" O.D. x 12" round tenon (use with Williams' AVPT Decorative Pole Top Assemblies)
TC_	Custom round tenon (must specify tenon diameter (O.D.) and height, consult factory)

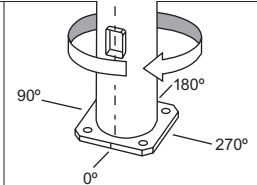
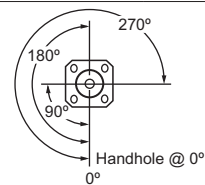


DRILLED SIDE MOUNT

Must specify drilling location using codes below. See radial index for clarification.

EXAMPLE: SM/S
(side mount drill, single fixture located at 0°)

Radial Index



SM/S

Side mount drill/single 0°
(located at 0°)



SM/D90

Side mount drill/double 90°
(located at 0° and 90°)



SM/D180

Side mount drill/double 180°
(located at 0° and 180°)



SM/T90

Side mount drill/triple 90°
(located at 0°, 90°, and 180°)



SM/T120

Side mount drill/triple 120°
(located at 0°, 120°, and 240°)



SM/Q90

Side mount drill/quad 90°
(located at 0°, 90°, 180°, and 270°)

FINISH OPTIONS

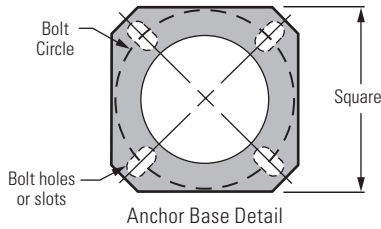
Polyester powder coat applied over chromate pre-treatment.

FINISH OPTIONS (Must specify)

BLK	Black (RAL #9004)	GRN	Green (RAL #6005)
DBZ	Dark bronze	SLV	Satin aluminum (RAL #9006)
DBR	Medium bronze	WHT	White (RAL #9003)
GRAY	Standard gray	RAL#	Specify custom color

ANCHOR BOLTS (Must specify)

AB	Anchor bolts (4 each, shipped with pole)	POLE		BASE PLATE			ANCHOR BOLTS					
		LAB	Less anchor bolts	BASE O.D. (IN)	WALL THK. (GA)	BOLT CIRCLE DIA. (IN)	± (IN)	SO. (IN)	THK. (IN)	DIA. x LENGTH x HOOK (IN)	PROJ. (IN)	± (IN)
PAB	Pre-shipped anchor bolts (4 each)			5.90	11	9.00	0.50	10.00	0.875	1.00 x 36.00 x 4.00	4.13	0.25
				6.50	11	9.50	0.50	10.50	0.875	1.00 x 36.00 x 4.00	4.13	0.25
				6.60	11	9.50	0.50	10.50	0.875	1.00 x 36.00 x 4.00	4.13	0.25
				7.00	11	10.00	0.50	10.88	0.875	1.00 x 36.00 x 4.00	4.13	0.25
				7.00	7	10.00	0.50	10.88	1.000	1.00 x 36.00 x 4.00	4.25	0.25
				7.30	11	10.50	0.50	11.25	0.875	1.00 x 36.00 x 4.00	4.13	0.25
				7.82	11	11.00	0.50	11.50	0.875	1.00 x 36.00 x 4.00	4.13	0.25
				8.00	11	11.00	0.50	11.50	0.875	1.00 x 36.00 x 4.00	4.13	0.25
				8.00	7	11.00	0.50	11.50	1.250	1.25 x 42.00 x 6.00	5.00	0.25
				8.50	11	11.50	0.50	12.00	1.000	1.00 x 36.00 x 4.00	4.25	0.25
				9.00	11	12.50	0.50	12.38	1.000	1.00 x 36.00 x 4.00	4.25	0.25
				9.00	7	12.50	0.50	12.38	1.250	1.25 x 42.00 x 6.00	5.00	0.25
				9.50	11	13.00	0.50	13.00	1.000	1.00 x 36.00 x 4.00	4.25	0.25
				10.00	11	13.50	0.50	14.00	1.000	1.00 x 36.00 x 4.00	4.25	0.25
				10.00	7	13.50	0.50	14.00	1.250	1.25 x 42.00 x 6.00	5.00	0.25



ANCHOR BOLTS

Anchor bolts conform to ASTM F1554 Grade 55 and are provided with two hex nuts and two flat washers. Bolts have an "L" bend on one end and are galvanized a minimum of 12" on the threaded end. Template provided with every pole and anchor bolt order.

OPTIONS

FS	Festoon box only	
	<p>NOTE: Casting only. Outlet, cover, and hardware by others. The festoon box is located above the access door at 0°, approximately 41" above ground level.</p>	
FBCS	Full base cover, steel	
NC	Nut covers	

OPTIONS

FULL BASE COVER — H.E. Williams, Inc. reserves the right to provide an optional two-piece steel full base cover on some applications depending upon the finish requirement and/or pole base diameter.

NUT COVERS —
Optional anchor bolt nut covers are available upon request.

LOAD AND DIMENSIONAL DATA

NOM. MTG. HEIGHT (FT)	CATALOG NUMBER	POLE DIMENSIONS				80 MPH ³		90 MPH ³		100 MPH ³	
		BASE O.D. (IN)	TOP O.D. (IN)	WALL THK. (GA)	STRUCT. WT. ⁴ (LBS)	MAX. EPA (SQ FT)	MAX. WEIGHT (LBS)	MAX. EPA (SQ FT)	MAX. WEIGHT (LBS)	MAX. EPA (SQ FT)	MAX. WEIGHT (LBS)
20	RTS-200-0590-11 ⁵	5.90	3.10	11	140	19.3	482	15.1	377	12.2	305
	RTS-200-0650-11	6.50	3.70	11	160	24.2	605	19.3	482	15.6	390
25	RTS-250-0590-11 ⁵	5.90	2.40	11	155	12.5	312	9.9	247	8.0	200
	RTS-250-0700-11	7.00	3.50	11	200	20.3	507	16.2	405	13.1	327
	RTS-250-0700-7	7.00	3.50	7	280	30.5	760	24.0	625	19.8	495
30	RTS-300-0660-11	6.60	2.40	11	200	11.7	292	9.3	232	7.5	187
	RTS-300-0800-11	8.00	3.80	11	265	18.9	473	14.9	373	12.0	300
	RTS-300-0800-7	8.00	3.80	7	380	33.5	838	27.0	675	22.0	550
35	RTS-350-0730-11	7.30	2.40	11	250	11.2	280	8.9	222	7.1	177
	RTS-350-0850-11	8.50	3.60	11	315	18.9	472	15.1	377	12.2	305
	RTS-350-0950-11	9.50	4.60	11	370	23.2	580	18.2	455	14.5	363
39	RTS-390-0782-11	7.82	2.40	11	285	10.7	267	8.5	212	6.6	165
	RTS-390-0900-11	9.00	3.58	11	355	17.2	430	13.5	338	10.8	270
	RTS-390-0900-7	9.00	3.58	7	515	28.5	715	23.0	575	19.0	475
45	RTS-450-1000-11	10.00	3.70	11	450	17.4	435	13.5	338	10.6	265
	RTS-450-1000-7	10.00	3.70	7	650	28.5	715	23.0	575	19.0	475
50	RTS-500-1000-11	10.00	3.00	11	475	13.2	330	10.6	265	8.3	208
	RTS-500-1000-7	10.00	3.00	7	680	20.5	512	16.5	412	13.6	340

³ Maximum weight and Effective Projected Area (EPA) values are based on a 1.3 gust factor for top mounted luminaires or arm assemblies having a centroid 2'-6" above the nominal mounting height. Variations from sizes above are available upon inquiry. Satisfactory performance of poles is dependent upon the pole being properly attached to a supporting foundation of adequate design. See Williams Outdoor Information Section, page 19A, for Wind Map and EPA information.

⁴ Structure weight is a nominal value which includes the pole shaft and base plate only.

⁵ 3" x 5" nominal handhole - all others 4" x 6.5" nominal.

NOTES

- Pole installations in various parts of the country perform satisfactorily; however, in select locations destructive vibration can occur. H.E. Williams, Inc. is not responsible for vibration induced fatigue damage.
- H.E. Williams, Inc. warrants this product to be free from defects in materials and workmanship. Any defective part returned within one year from the date of delivery of the goods will be repaired or replaced without charge, F.O.B. factory.
This warranty specifically excludes fatigue or similar phenomena resulting from induced vibration, harmonic oscillation or resonance associated with movement of air currents around the product.
The above warranties are given in lieu of all other warranties express or implied, including without limitation, the warranty of merchantability and the warranty of suitability for a particular purpose. It is expressly stated that H.E. Williams, Inc. assumes no liability for consequential or liquidated damages arising out of a breach of the sale, including any warranties arising therefrom, and buyer's remedy shall be limited to repair or replacement of defective parts as described above.
Any action for the breach under a sale including any warranties arising therefrom must be commenced within one year after the cause of action accrues.