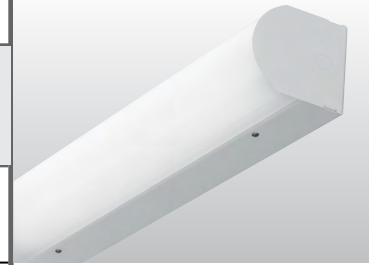


SURFACE OR WALL MOUNT LIGHT

SLF

T5 | T8

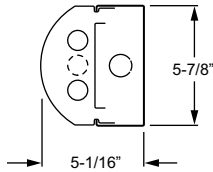
CATALOG #:	TYPE:
PROJECT:	NOTES:



EXAMPLE **SLF - 4 - 2 54T5H - HIA - OPTIONS - EB2 - UNV**

SERIES NOMINAL LENGTH TOTAL LAMPS WATTAGE/TYPE SHIELDING OPTIONS/ACCESSORIES BALLAST TYPE VOLTAGE

CROSS SECTION



ORDERING INFORMATION

SERIES
SLF Surface or Wall Mount Light

NOMINAL LENGTH

2	2'
3	3'
4	4'

TOTAL LAMPS

1	(not available with NL option)
2	(available with NL option on 3' and 4' units only)

LAMP WATTAGE/TYPE

2' LAMP OPTIONS

14T5S	2', 14-watt T5
17	2', 17-watt T8
24T5H	2', 24-watt T5HO

3' LAMP OPTIONS

21T5S	3', 21-watt T5
25	3', 25-watt T8

4' LAMP OPTIONS

28T5S	4', 28-watt T5
32	4', 32-watt T8
54T5H	4', 54-watt T5HO

SHIELDING

HIA Frosted high-impact acrylic, lens secured with Phillips head screws. Optional tamper-resistant screws available, see HIA/TP.

HIA/TP Frosted high-impact acrylic with tamper resistant screws. Tamper-resistant (TPSN-8) tool is required with HIA/TP option, must be ordered separately, see accessories.

OPTIONS

For generic EM ballast options (must specify voltage), size restrictions apply, see [Technical Info](#).

For color options, visit the SLF online at hew.com.

NL14T5S Night light, 2', 14-watt T5. Available with 3' and 4' units only; includes program start T5 ballast

NL17T8 Night light, 2', 17-watt T8. Available with 3' and 4' units only; includes instant start T8

NL24T5H Night light, 2', 24-watt T5HO. Available with 3' and 4' units only; includes program start T5 ballast

PSBR/120 Single-circuit bottom-mounted pull switch on right (120V only)

PSBL/120 Single-circuit bottom-mounted pull switch on left (120V only)

OPTIONS (Continued)

OCCUPANCY SENSORS
 Factory-installed (must specify voltage). See page 3 for details.

Passive Infrared (PIR):
OCCSS SBR-10 Line voltage, end mount, 120V, 277V, or 347V only.

OCCSS SBR-10-2P-AO Line voltage with alternating-off relay control, end mount, 120V, 277V, or 347V only. (Requires (2) 1-lamp electronic ballasts. Not available with NL option.)

OCCWS FSP-211-L_ Digital programmable high/low, side mount. 120V or 277V only, must specify lens, see page 3 for details. Optional FSIR-100 remote controller available, ordered separately, see accessories.

Ultrasonic:
OCCWS FS-505-PP-___ Low voltage ultrasonic sensor, side mount. Must specify 120V, 277V, or 347V.

ACCESSORIES

FSIR-100 Remote controller for OCCWS FSP-211 occupancy sensor. Please specify quantity required per project, see page 3 for details.

TPSN-8 #8 snake eye tamper-resistant tool, required with HIA/TP option. Ordered separately, specify quantity required per project.

BALLAST TYPE

For dimming ballast options, see [Technical Info](#). Ballast restrictions apply.

EB1 1-lamp electronic ballast
EB2 2-lamp electronic ballast
EB1/1 (2) 1-lamp electronic ballasts (4' only, no NL option)

VOLTAGE

120	120V
277	277V
UNV	120-277V
347	347V

FEATURES

- ▶ Attractive source of direct lighting for use in stairwells and hallways.
- ▶ Optional end- or side-mount occupancy sensors provide added energy-efficiency.
- ▶ Sleek design for wall or surface-mount applications.
- ▶ Optional center lamp nightlight feature.
- ▶ Lamps are shielded from view by frosted high-impact acrylic lens.
- ▶ Heavy duty 16-gauge C.R.S. spot-welded housing.
- ▶ Optional tamper-resistant screws available.
- ▶ This fixture is proudly made in the USA.

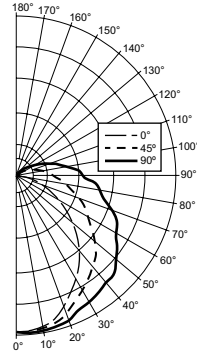


SPECIFICATIONS

- Housing** – 16-gauge C.R.S.
- Shielding** – Frosted high-impact acrylic lens, .100" thick.
- Finish** – 92% minimum average reflective white polyester powder coat bonded to phosphate-free, multi-stage pretreated metal. All parts painted after fabrication to facilitate installation, increase efficiency, and inhibit corrosion.
- Electrical** – Electronic ballast standard, instant start T8, program start T5, rated Class P.
- Mounting** – Wall and surface mount.
- Labels** – UL/CUL listed as fluorescent luminaire suitable for dry or damp locations.

TEST REPORT INFORMATION

- ▶ Test Report #: 17244.0
- ▶ Date: 04/16/13
- ▶ Lamp Type: F54T5/835/HO
- ▶ Lamp Quantity: 2



CANDLEPOWER DISTRIBUTION

Vertical Angle	Horizontal Angle			Zonal Lumens
	0°	45°	90°	
0	1868.	1868.	1868.	
5	1869.	1870.	1877.	178.7
15	1770.	1813.	1860.	514.1
25	1541.	1654.	1766.	765.3
35	1305.	1509.	1709.	947.5
45	1031.	1348.	1658.	1042.7
55	725.	1107.	1479.	991.4
65	468.	910.	1320.	895.3
75	237.	688.	1085.	715.4
85	67.	550.	957.	584.3
90	6.	441.	794.	
95	0.	401.	756.	428.2
105	0.	274.	529.	285.0
115	0.	181.	363.	181.5
125	0.	122.	231.	108.2
135	0.	82.	147.	54.7
145	0.	68.	104.	33.3
155	0.	0.	67.	11.2
165	0.	0.	22.	0.8
175	0.	0.	0.	0.0
180	0.	0.	0.	

ZONAL CAVITY COEFFICIENTS

	Ceiling			Wall			Floor			
	.80	.70	.50	.70	.50	.30	.50	.30	.10	
Room Cavity Ratio	0	.89	.89	.89	.86	.86	.86	.80	.80	.80
	1	.80	.76	.72	.77	.73	.69	.67	.65	.62
	2	.72	.65	.59	.69	.63	.57	.58	.54	.50
	3	.66	.57	.50	.63	.55	.49	.51	.46	.42
	4	.60	.50	.43	.57	.49	.42	.45	.40	.35
	5	.55	.44	.37	.52	.43	.36	.40	.34	.30
	6	.50	.39	.32	.48	.38	.31	.36	.30	.25
	7	.46	.35	.28	.44	.34	.28	.32	.26	.22
	8	.43	.32	.25	.41	.31	.24	.29	.23	.19
	9	.39	.29	.22	.37	.28	.21	.26	.20	.16
	10	.36	.26	.20	.35	.25	.19	.24	.18	.15

Effective Floor Cavity Reflectance = .20

LUMEN SUMMARY

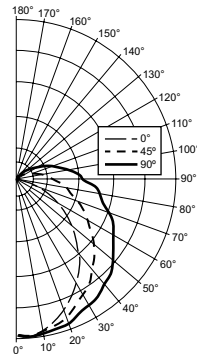
Zone	Lumens	% Lamp	% Fixture
0 - 30	1458.	14.6	18.8
0 - 40	2406.	24.1	31.1
0 - 60	4440.	44.4	57.4
0 - 90	6635.	66.3	85.7
90 - 120	895.	8.9	11.6
90 - 130	1003.	10.0	13.0
90 - 150	1091.	10.9	14.1
90 - 180	1103.	11.0	14.3
Total Luminaire:			
0 - 180	7738.	77.4	100.0

Total Luminaire Optical Efficiency: **77.4%**
IES Spacing: End = 1.1, Diagonal = 1.3, Across = 1.4

PHOTOMETRY – T8

TEST REPORT INFORMATION

- ▶ Test Report #: 17242.0
- ▶ Date: 04/16/13
- ▶ Lamp Type: F32T8/835
- ▶ Lamp Quantity: 2



CANDLEPOWER DISTRIBUTION

Vertical Angle	Horizontal Angle			Zonal Lumens
	0°	45°	90°	
0	1053.	1053.	1053.	
5	1066.	1068.	1071.	101.9
15	996.	1022.	1047.	289.5
25	875.	939.	1000.	434.1
35	746.	860.	966.	539.5
45	572.	745.	905.	575.3
55	405.	617.	808.	549.6
65	262.	509.	726.	498.8
75	132.	390.	609.	403.7
85	39.	313.	538.	332.1
90	3.	253.	454.	
95	0.	224.	424.	240.9
105	0.	161.	313.	168.3
115	0.	110.	227.	111.3
125	0.	74.	147.	67.2
135	0.	49.	93.	38.6
145	0.	41.	63.	20.2
155	0.	26.	37.	9.3
165	0.	0.	28.	1.0
175	0.	0.	0.	0.0
180	0.	0.	0.	

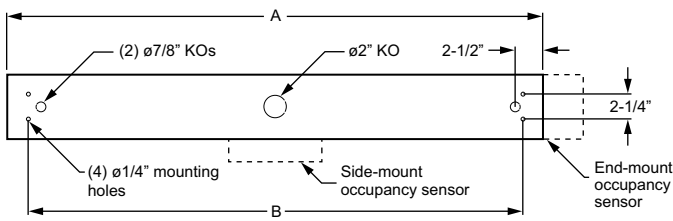
LUMEN SUMMARY

Zone	Lumens	% Lamp	% Fixture
0 - 30	826.	14.0	18.8
0 - 40	1365.	23.1	31.2
0 - 60	2490.	42.2	56.8
0 - 90	3725.	63.1	85.0
90 - 120	520.	8.8	11.9
90 - 130	588.	10.0	13.4
90 - 150	646.	11.0	14.8
90 - 180	657.	11.1	15.0
Total Luminaire:			
0 - 180	4381.	74.3	100.0

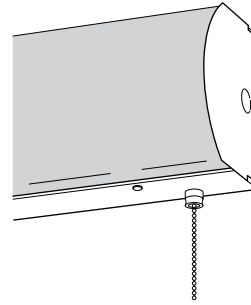
Total Luminaire Optical Efficiency: **74.3%**
IES Spacing Criteria: End = 1.2, Diagonal = 1.3, Across = 1.4

FIXTURE DETAILS

BACK VIEW



PULL SWITCH



NOMINAL LENGTH	ACTUAL LENGTH (A)	ACTUAL LENGTH (B)
2'	24-5/8"	20-1/2"
3'	36-5/8"	32-1/2"
4'	48-5/8"	44-1/2"

OCCUPANCY SENSOR DETAILS

FSIR-100 – Occupancy Sensor Remote
For use with OCCWS FSP-211

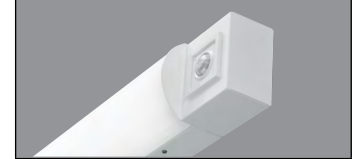


Initial setup and subsequent sensor adjustments are made using a handheld configuration tool (FSIR-100). The wireless tool stores up to five sensor parameter profiles to speed configuration of multiple sensors. Please specify quantity required per project.

Visit www.wattstopper.com for more information.

END MOUNT

SBR-10 Sensors



SIDE MOUNT

FSP-211 | FS-505 Sensors



FSP-211 OCCUPANCY SENSOR

- Fully adjustable high and low dimmed light levels.
- Hold-off setpoint with automatic calibration option for convenience and added energy savings.
- Adjustable via handheld wireless configuration tool (FSIR-100, ordered separately, see accessories).
- Adjustable time delay and cutoff delay.
- Factory set to 10% dimming at 5 minutes, cutoff at 1 hour.

EXAMPLE

OCCWS FSP-211 - L2

OCCUPANCY SENSOR | LENS

ORDERING INFORMATION

OCCWS FSP-211

Digital high/low passive infrared (PIR) integrated sensor, side mount, must specify lens (120V or 277V only).

LENS

L2

Coverage at 8' mounting height: ø48'

L3

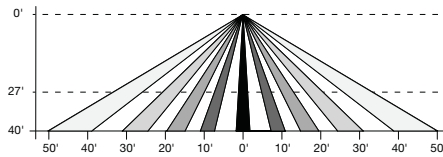
Coverage at 20' mounting height: ø40'

L7

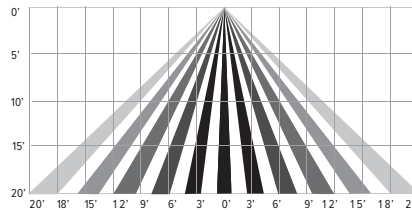
Coverage at 40' mounting height: ø100'



L2 lens



L7 lens



L3 lens

