

CATALOG #: _____

TYPE: _____

PROJECT: _____



FEATURES

- Ultra-low profile design blends with architectural environments
- Flexible mounting for walls, grid and hard surface ceilings
- Installs inconspicuously in confined spaces such as cove or under cabinet applications
- Wide distribution and diffuse lens provides smooth, ambient illumination
- Invisible lens seams with diffuser film
- Extruded aluminum rail for pin-straight lines in seamless, continuous rows
- Quick and easy installation
- Fixture and driver kits are boxed together for easy installation
- ADA compliant for wall mount applications
- Maximize energy savings with efficacies up to 111 lm/W
- Wireless control solutions available
- Made Right Here® in the USA

SPECIFICATIONS

- HOUSING** – Extruded aluminum.
- SHIELDING** – Frosted, matte acrylic.
- FINISH** – Clear anodized white injection molded end caps.
- ELECTRICAL** – High-quality mid-power LED boards. L70 > 60,000 hours per IES TM-21. See fixture performance data for lumen maintenance.
- MOUNTING** – Surface, wall, or ceiling grid mount.
- LISTINGS** –
 - cCSAus certified as luminaire suitable for dry or damp locations.
 - ADA Compliant
 - Complies with the Buy American Act and other federal regulations. Request certification at hew.com/baa.
- WARRANTY** – 5-year limited fixture warranty, see hew.com/warranty.

ORDERING EXAMPLE: SL - S - 4 - L5/835 - RD - WB - PC10 - OPTIONS - CONTROL/DIM - UNV

ORDERING INFO

SERIES	STYLE ^[1]	TOTAL LENGTH	LUMENS ^[2]	CRI	CCT	SHIELDING
SL	S Stand-alone, 2-8'	Lengths specified in 2' increments	L3 300lm	8 80	27 2700K	RD Round frosted acrylic
	P Multi-fixture pattern powered by one driver	Example: 16' = 16'	L5 500lm	9 90 ^[3]	30 3000K	
	C Continuous row powered by one driver		L10 1,000lm		35 3500K	
					40 4000K	
					50 5000K	

Product Builder

Easily build rows & patterns with the Williams Product Builder at hew.com/product-builder

Stand-alone

Continuous Row



MOUNTING ^[4]	CONFIGURATION	CABLE LENGTH	OPTIONS
WB 15/16" T-bar bracket	<i>For multi-fixture patterns or continuous rows, see the product builder</i>	PC10 10' plenum-rated cable(s) to driver box ^[6]	EM/10WRM Remote mount 10-watt emergency battery ^[8]
NB 9/16" T-bar bracket		PC20 20' plenum-rated cable(s) to driver box ^[7]	(L__)
SM Surface clip ^[5]			Additional lower lumen packages available. Example: 800 lumens = SL-4-L10/835-RD-WB-(L8) ^[9]
SB 1/4" Slotted t-bar bracket			

CONTROL	REMOTE DRIVER ^[10]	VOLTAGE
– None	DIM Dimming driver prewired for 0-10V low voltage applications	120 120V
AVI-LVFA Avi-on wireless fixture control ^[11]	DRV Driver prewired for non-dimming applications	277 277V
AWNLR Lutron Athena wireless node integral fixture control, RF only ^[12]	DA Driver with 12V auxiliary power, without external dimming wires ^[13]	UNV 120-277V
	DSR Sensor-ready driver without external dimming wires (D4i DALI-2) ^[14]	

NOTES

- Length restrictions apply for P and C styles, see product builder for available configurations.
- Lumens per foot output based on 80 CRI/3500K. Actual performance may vary +/-5%, see page 2 for FIXTURE PERFORMANCE DATA. Additional lumen packages available, see Options.
- Extended lead times may apply. Consult factory for availability.
- See page 3 for MOUNTING DETAILS.
- Stainless steel.
- Standard for lengths up to 16'.
- Standard for lengths 16' and above, can be specified for lengths under 16'.
- See page 2 for FIXTURE DETAILS.

- Specify in increments of 100 nominal lumens. Option must be specified with next higher lumen package.
- Drivers must be remote mount. See page 2 for FIXTURE DETAILS. 10' fixture cable provided, see options for additional lengths.
- DA Driver only. See page 4 for AVI-ON BLUETOOTH WIRELESS CONTROL DETAILS.
- DA and DSR Drivers only.
- Avi-on and Lutron Athena Controls only.
- Lutron Athena Controls only.
- Consult factory.



FIXTURE PERFORMANCE DATA

PER FOOT			
LED PACKAGE	DELIVERED LUMENS	WATTAGE	EFFICACY (lm/W)
L3	312	2.8	111
L5	506	4.7	108
L10	990	8.9	111

- Photometrics tested in accordance with IESNA LM-79. Results based on 80 CRI/3500K CCT, average wattage for 120V through 277V input, and 25°C ambient temperature. Actual performance may vary +/-5%
- To calculate lumen output in emergency mode, multiply the battery wattage by the efficacy.
- Use multiplier table to calculate additional options.

LUMEN MAINTENANCE ^[1]			
L70	L80	L85	L90
>60000	>60000	>60000	56000
>60000	>60000	>60000	56000
>60000	>60000	>60000	56000

¹ Predicted lumen maintenance calculated in accordance with IES TM-21 per Energy Star (R) TM-21 Calculator rev. 02.08.16.

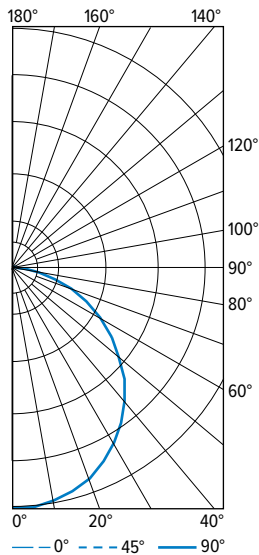
MULTIPLIER TABLE

COLOR TEMPERATURE	
CCT	CONVERSION FACTOR
2700K	0.97
3000K	0.99
3500K	1.00
4000K	1.03
5000K	1.06

80 CRI	2700K	0.80
80 CRI	3000K	0.82
80 CRI	3500K	0.83
80 CRI	4000K	0.86
80 CRI	5000K	0.89

PHOTOMETRY

SL-4-L5/835-RD Total Luminaire Output: 2022 lumens; 17.3 Watts | Efficacy: 117 lm/W | 80 CRI; 3500K CCT

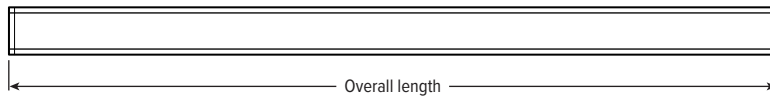


VERTICAL ANGLE	HORIZONTAL ANGLE			ZONAL LUMENS
	0°	45°	90°	
0	636	636	636	
5	639	631	631	60
15	616	608	609	172
25	569	565	570	261
35	502	502	509	315
45	416	422	433	327
55	320	334	354	300
65	211	242	273	240
75	110	155	198	165
85	22	89	132	94
90	0	66	103	
95	0	45	81	48
105	0	22	47	24
115	0	9	25	11
125	0	4	10	4
135	0	0	4	1
145	0	0	0	0
155	0	0	0	0
165	0	0	0	0
175	0	0	0	0
180	0	0	0	

LUMEN SUMMARY	ZONE	LUMENS	% FIXTURE
	0 - 30	494	24
	0 - 40	809	40
	0 - 60	1435	71
	0 - 90	1934	96
	90 - 120	83	4
	90 - 150	88	4
	90 - 180	88	4
	0 - 180	2022	100

FIXTURE DETAILS

BACKVIEW

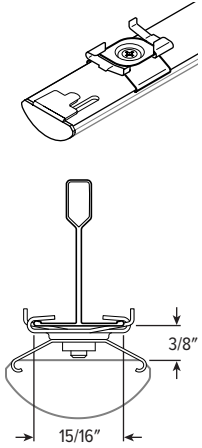


OVERALL LENGTH	
2'	24-1/4"
4'	48-1/4"
6'	72-1/4"
8'	96-1/4"

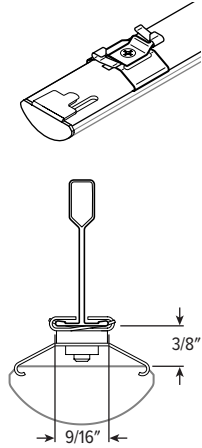


MOUNTING DETAILS

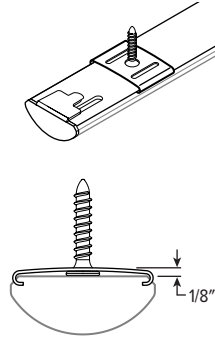
WB | 15/16" T-BAR



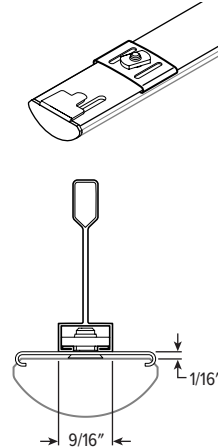
NB | 9/16" T-BAR



SM | SURFACE CLIP

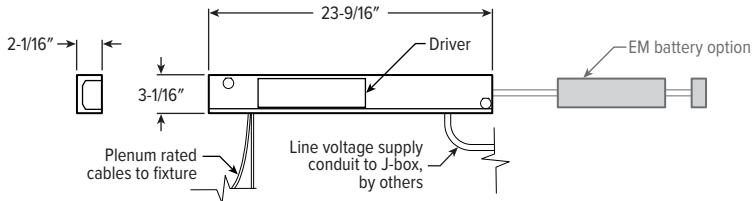


SB | 1/4" SLOTTED T-BAR

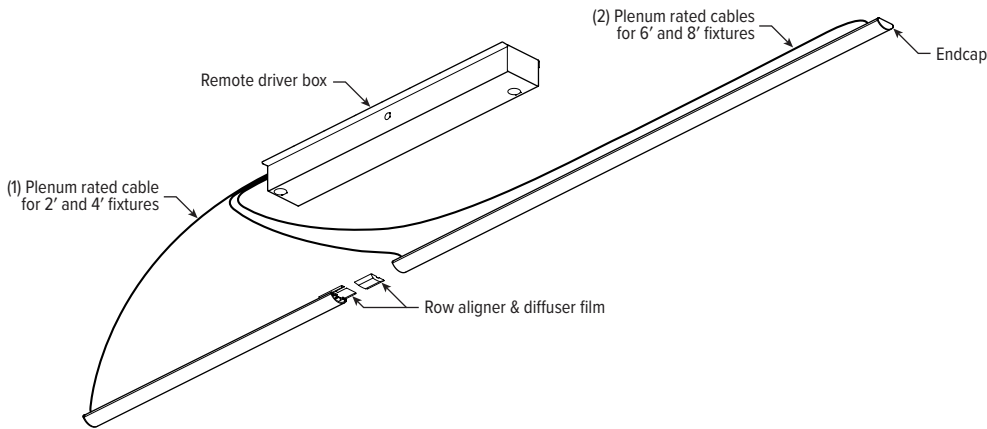


FIXTURE DETAILS

REMOTE DRIVER BOX



CONTINUOUS ROW ASSEMBLY



AVI-ON BLUETOOTH WIRELESS CONTROL DETAILS

FEATURES

Simple

- Gateway-free distributed control
- Factory pre-commissioning
- Contractor friendly installation
- Occupancy/vacancy/daylight sensing

Scalable

- Virtually unlimited network size
- Spans small offices to large warehouses
- Flexible control strategies

Secure

- Optional cloud connectivity
- UL IoT platinum security rating
- DLC 5.0 compliant

COMMISSIONING & INSTALLATION TOOLS

Avi-on mobile apps provide intuitive, quick installation and commissioning. Pro tools are available to qualified installers. Live commissioning training and on-site or remote support by Avi-on must be ordered separately through Avi-on.



Commissioning Mobile App

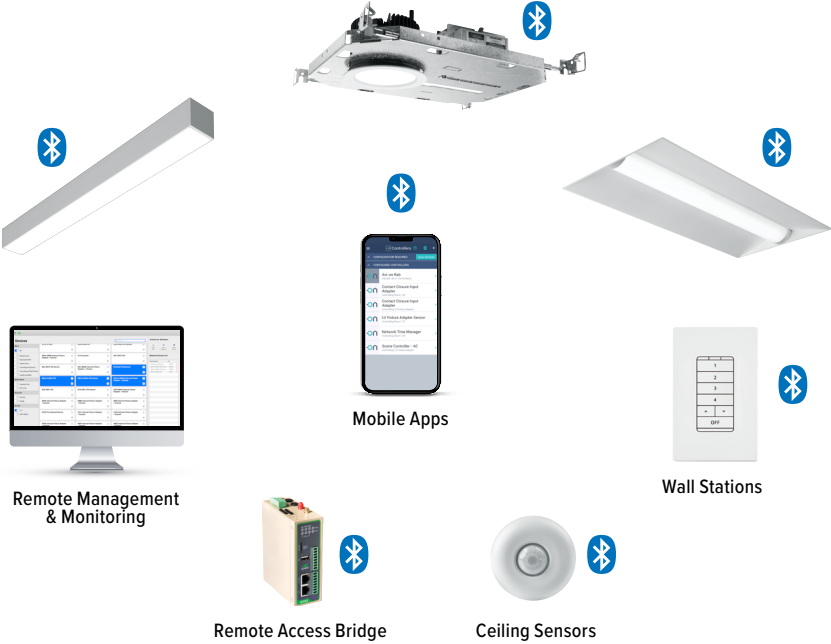


Zone Scanner Web App



Commissioning Pro App

SYSTEM COMPONENTS



The Bluetooth® word mark and logos are registered trademarks owned by Bluetooth SIG, Inc. and any use of such marks by Avi-on is under license. Other trademarks and trade names are those of their respective owners.

ACCESSORIES

WALL STATIONS	
AVI-2401AC	Scene controller - numbered 1-4, 120-277VAC
AVI-2402BAT	Scene controller - numbered 1-4, battery powered
AVI-2401AC-2	Dimmer with presets - percentages, 120-277VAC
AVI-2402BAT-2	Dimmer with presets - percentages, battery powered
AVI-2401AC-3	On/off/dimming, 120-277VAC
AVI-2402BAT-3	On/off/dimming, battery powered

NETWORK	
AVI-RAB-LTE	Remote access bridge
AVI-KIT-NTM	Network time manager with battery backup
CEILING MOUNT SENSORS	
AVI-KIT-SEN-DUCM	PIR motion and ultrasonic sensor kit
AVI-KIT-SEN-ICM	PIR motion and photocell sensor kit

For load controllers and additional accessory info, see hew.com/avi-on

