

DESIGNERLINE SMALL WALL MOUNT COVE

SMC

LED

CATALOG #:

TYPE:

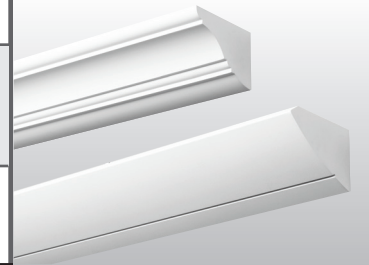
PROJECT:

NOTES:

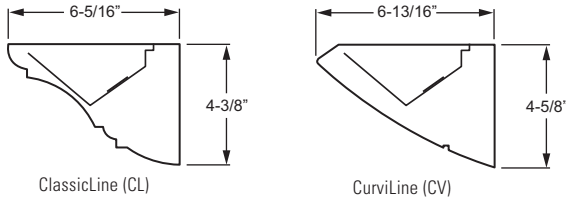
EXAMPLE

SMC CL - 4 - L45/840 - F/F - OPTIONS - DIM - UNV

SERIES STYLE NOMINAL LENGTH LUMEN PACKAGE CRI & CCT FIXTURE TYPE END CAP OPTIONS DRIVER VOLTAGE



CROSS SECTIONS



ORDERING INFORMATION

SERIES

SMC DesignerLine Small Wall Mount Cove

STYLE

CL Classic
CV CurviLine

NOMINAL LENGTH

4 4'
8 8'

LED PACKAGE

EXAMPLE: L45/840			
LUMEN PACKAGE	NOMINAL LUMENS	MINIMUM CRI & CCT	AVERAGE SYSTEM WATTAGE
	4'		
L45	4,500	830 = 82 CRI, 3000K 835 = 82 CRI, 3500K 840 = 82 CRI, 4000K	43
L90	9,000		80

Additional LED lumen packages available, see options.

FIXTURE TYPE

F Electrical feeder unit, quick-connect wiring harness, left end cap installed
J Joiner unit, quick-connect wiring harness, no end caps
E End unit, quick-connect wiring harness, right end cap installed
S Stand-alone unit, two end caps installed

END CAP STYLE

F Flat ends
M Mitered ends (increases overall length, see back for details)

OPTIONS

GLR Fuse, fast blow (specify voltage), one per driver
C2_ Two-circuit quick-connect wiring harness (see Information section for complete quick-connect offering)
(L_) Additional lower lumen packages available. Specify in increments of 100 nominal lumens. Option must be specified with next *higher* lumen package.
Example: 4,000 nominal lumens = SMCCCL-4-L45/840-(**L40**).
AMW Anti-microbial white finish

DRIVER

DRV Driver prewired for non-dimming applications
DIM Driver prewired for 0-10V low-voltage dimming applications

VOLTAGE

120 120V
277 277V
UNV 120-277V

FEATURES

- ▶ Architecturally styled cove creates a comfortable, low glare environment without cluttering the ceiling surface
- ▶ Quality workmanship and attention to detail encompasses this small scale indirect luminaire designed to perform well in spaces with low to moderate ceiling heights
- ▶ Common applications include smaller offices, corridors, healthcare facilities and areas where it is important to avoid typical glare
- ▶ The DesignerLine Small Cove is part of an extensive system of matched products
- ▶ Heavy-duty hook-on mounting brackets make it easy to securely install and level fixtures
- ▶ Joiner and alignment system permit mounting in continuous rows with hairline seams that virtually disappear
- ▶ Optional anti-microbial white finish available for use in healthcare applications
- ▶ Rated for 50,000 hours at 70% lumen maintenance (L70)
- ▶ Minimum 82 CRI; 3000K, 3500K, or 4000K CCT
- ▶ This fixture is proudly made in the USA



LED

Catalog #: **SMCCL-4-L45/840-DIM-UNV**

SPECIFICATIONS

Housing/Reflector – Seam-welded extruded aluminum.

Weight – 5 lbs. per foot

End Caps – Aluminum, welded, seam-filled and finished at ends of individual units and rows.

Reflective Surfaces – 92% minimum average reflective white polyester powder coat on interior components.

Shielding – Frosted acrylic, .125" thick.

Finish – Textured matte white polyester TGIC powder coat bonded to phosphate-free, multi-stage pretreated metal. All parts painted after fabrication to facilitate installation, increase efficiency, and inhibit corrosion.

Electrical – High quality mid-power LED boards. L70 at 50,000 hours.

Mounting – Wall mount, individual units or continuous rows.

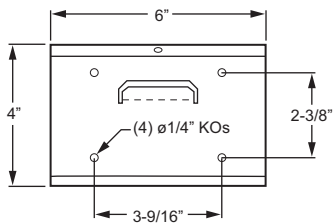
Labels – cCSAus certified as luminaire suitable for dry or damp locations.

Warranty – 5-year limited warranty, see hew.com/warranty.

IMPORTANT:

Electrostatic sensitive unit. Observe precautions when handling.

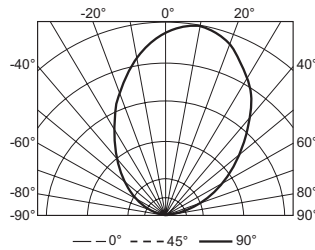
WALL MOUNT BRACKET



PHOTOMETRY

TEST REPORT INFORMATION

- ▶ Date: 02/23/15
- ▶ Lamp Type: LED
- ▶ **Rated Lumens: 4536**
- ▶ **Watts: 51.5**
- ▶ **Lumens Per Watt: 88**
- ▶ **CRI: 82**
- ▶ **CCT: 4000K**



LUMEN SUMMARY

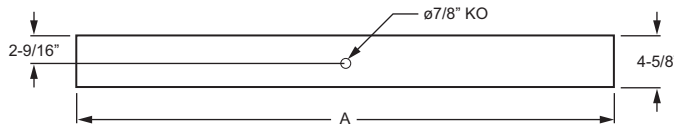
Zone	Lumens	% Fixture
90 - 120	840.	18.5
90 - 130	1487.	32.8
90 - 150	3098.	68.3
90 - 180	4534.	99.9
Total Luminaire:		
0 - 180	4536.	100.0

CANDLEPOWER DISTRIBUTION

Vertical Angle	Horizontal Angle					Zonal Lumens
	0°	45°	90°	135°	180°	
90°	4.	6.	16.	6.	6.	
95°	88.	101.	112.	80.	70.	101.4
105°	303.	306.	275.	206.	179.	275.9
115°	565.	559.	490.	364.	312.	462.5
125°	884.	869.	759.	568.	493.	647.2
135°	1251.	1220.	1051.	806.	717.	784.8
145°	1604.	1551.	1358.	1093.	981.	826.2
155°	1866.	1818.	1623.	1378.	1277.	736.7
165°	2050.	1988.	1829.	1674.	1607.	514.1
175°	2052.	2014.	1964.	1877.	1882.	185.0
180°	1981.	1981.	1981.	1981.	1981.	

FIXTURE DETAILS

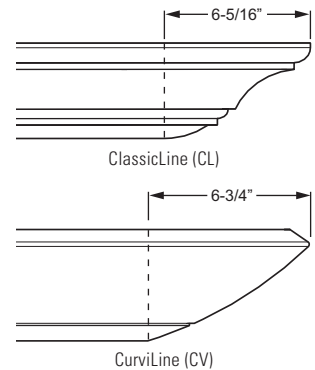
BACK VIEW



NOMINAL LENGTH	ACTUAL LENGTH (A)
4'	46-3/16"
8'	92-1/8"

Note: Mitered ends add to overall length, see details at right.

MITERED END DETAILS



FIXTURE TYPE DETAILS (ClassicLine shown)

	F	J	E	S
Mitered				
Flat				