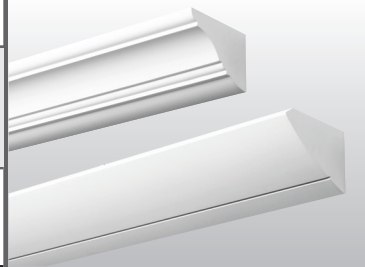


DESIGNERLINE SMALL WALL MOUNT COVE

SMC

tunable **WHITE**

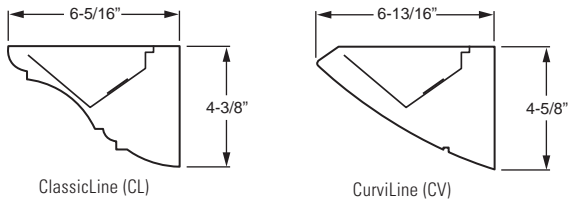


CATALOG #:	TYPE:
PROJECT:	NOTES:

EXAMPLE **SMC** **CL** - **4** - **L40/8TW** - **F / F** - **OPTIONS** - **DALI** - **UNV**

SERIES STYLE NOMINAL LENGTH LUMEN PACKAGE CRI & CCT FIXT. TYPE END CAP OPTIONS CONTROL VOLTAGE

CROSS SECTIONS



ORDERING INFORMATION

SERIES
SMC DesignerLine Small Wall Mount Cove – Tunable White

STYLE
CL Classic
CV CurviLine

NOMINAL LENGTH
4 4'
8 8'

LED PACKAGE

EXAMPLE: L40/8TW		
LUMEN PACKAGE	NOMINAL LUMENS	WATTAGE
4'		
L40	4,000	36
8'		
L80	8,000	72

Nominal lumen output based on 4000K CCT. Actual lumens may vary +/-5%, see fixture performance data. Additional LED lumen packages available, see options.

CRI & CCT
8TW Tunable white (80 CRI, 3000K–5000K)

FIXTURE TYPE
F Electrical feeder unit, quick-connect wiring harness, left end cap installed
J Joiner unit, quick-connect wiring harness, no end caps
E End unit, quick-connect wiring harness, right end cap installed
S Stand-alone unit, two end caps installed

END CAP STYLE
F Flat ends
M Mitered ends (increases overall length, see page 3 for details)

OPTIONS
GLR (L_) Fuse, fast blow (specify voltage), one per driver. Additional lower lumen packages available. Specify in increments of 100 nominal lumens. Option must be specified with next *higher* lumen package.
Example: 3,500 nominal lumens = SMCCCL-4-L40/8TW-(L35).
AMW Anti-microbial white finish

CONTROL
 See page 3 for details.
DALI Driver prewired for DALI applications
DIM (1) 0-10V signal to control dimming
 (1) 0-10V signal to control CCT
DMX Driver prewired for DMX applications

VOLTAGE
120 120V
277 277V
UNV 120-277V

FEATURES

- ▶ Tunable white from 3000K to 5000K CCT, minimum 80 CRI.
- ▶ Architecturally styled cove creates a comfortable, low glare environment without cluttering the ceiling surface
- ▶ Quality workmanship and attention to detail encompasses this small scale indirect luminaire designed to perform well in spaces with low to moderate ceiling heights
- ▶ Common applications include smaller offices, corridors, healthcare facilities and areas where it is important to avoid typical glare
- ▶ The DesignerLine Small Cove is part of an extensive system of matched products
- ▶ Heavy-duty hook-on mounting brackets make it easy to securely install and level fixtures
- ▶ Joiner and alignment system permit mounting in continuous rows with hairline seams that virtually disappear
- ▶ Optional anti-microbial white finish available for use in healthcare applications
- ▶ This fixture is proudly made in the USA

tunable **WHITE**

SPECIFICATIONS

Housing/Reflector – Seam-welded extruded aluminum.

Weight – 5 lbs. per foot

End Caps – Aluminum, welded, seam-filled and finished at ends of individual units and rows.

Reflective Surfaces – 92% minimum average reflective white polyester powder coat on interior components.

Shielding – Frosted acrylic, .125" thick.

Finish – Textured matte white polyester TGIC powder coat bonded to phosphate-free, multi-stage pretreated metal. All parts painted after fabrication to facilitate installation, increase efficiency, and inhibit corrosion.

Electrical – High quality mid-power LED board. L70 > 50,000 hours per IES TM-21. Tunable White products use LEDs of multiple CCTs and may produce a perceptibly different shade of white from single-CCT products at the same CCT. All CCTs are within 3 MacAdam ellipses.

Mounting – Wall mount, individual units or continuous rows.

Labels – cCSAus certified as luminaire suitable for dry or damp locations.

Warranty – 5-year limited warranty, see hew.com/warranty.

IMPORTANT:

Electrostatic sensitive unit. Observe precautions when handling.

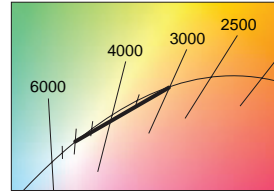
FIXTURE PERFORMANCE DATA

LED PACKAGE	DELIVERED LUMENS	WATTAGE	EFFICACY (lm/W)
4'			
L40	4054	35.9	113.0
8'			
L80	8107	71.8	113.0

- Photometrics tested in accordance with IESNA LM-79. Results shown are based on 25°C ambient temperature.
- Wattage shown is average for 120V through 277V input.
- Results based on 4000K, 80 CRI, actual lumens may vary +/-5%
- Use multiplier table to calculate additional options.

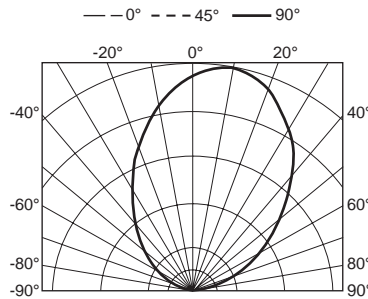
MULTIPLIER TABLE

CCT	CONVERSION FACTOR	
	LUMENS	WATTAGE
3000K	0.95	1.04
3500K	0.98	1.02
4000K	1.00	1.00
5000K	0.96	1.04



PHOTOMETRY

SMCCL-4-L40/8TW-DALI-UNV Total Luminaire Output: 4054 lumens; 35.9 Watts | Efficacy: 113 lm/W

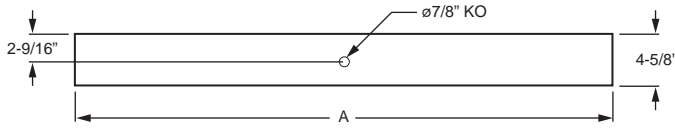


Vertical Angle	Horizontal Angle					Zonal Lumens
	0°	45°	90°	135°	180°	
0	4	5	14	5	6	
5	79	91	100	72	62	91
15	271	273	245	185	160	247
25	505	500	438	325	279	413
35	790	777	678	508	440	578
45	1118	1090	940	721	641	701
55	1433	1386	1213	977	877	738
65	1668	1625	1450	1232	1141	658
75	1832	1777	1634	1496	1436	460
85	1834	1800	1755	1677	1682	165
90	1770	1770	1770	1770	1770	

LUMEN SUMMARY	Zone	Lumens	% Fixture
90-130	1329	33	
90-150	2769	68	
90-180	4052	100	
0-180	4052	100	

FIXTURE DETAILS

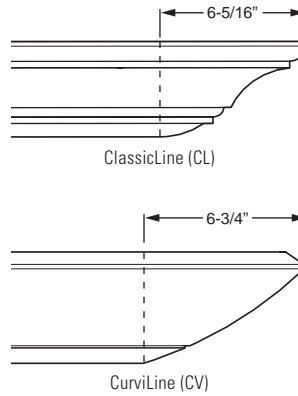
BACK VIEW



NOMINAL LENGTH	ACTUAL LENGTH (A)
4'	46-3/16"
8'	92-1/8"

Note: Mitered ends add to overall length, see details at right.

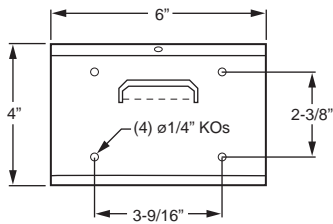
MITERED END DETAILS



FIXTURE TYPE DETAILS (ClassicLine shown)

	F	J	E	S
Mitered				
Flat				

WALL MOUNT BRACKET



CONTROL DETAILS

DIM



DALI



DMX

