

6" LIQUID-TIGHT TUBE LIGHT

TL

SUBMITTAL:

T5 | T8

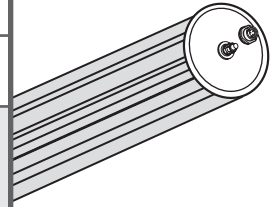
JOB:

TYPE:

VOLTAGE:

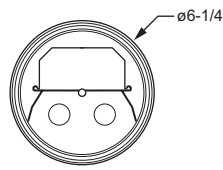
EXAMPLE → **TL - 4 - 2 32 - DR - 3WC6 - OPTIONS - EB2 - UNV**

SERIES NOMINAL LENGTH TOTAL WATTAGE/ LAMPS TYPE ENCLOSURE POWER ENTRY OPTIONS/ ACCESSORIES BALLAST TYPE VOLTAGE



FEATURES

- ▶ NSF/ANSI Standard 2–Splash Zone certified.
- ▶ Hose-down tested at 2000 PSI @ 3.8 GPM to withstand water penetration.
- ▶ Suspended, wall, or surface mount options.
- ▶ Stainless steel, corrosion-resistant¹ end caps are sealed with a gasketed washer and a heavy-duty silicone gasket.
- ▶ Ideal for car washes, food preparation, hose-down areas, laboratories, and agricultural applications.
- ▶ All exposed parts are corrosion-resistant.¹
- ▶ Liquid-tight power entry.
- ▶ Wide variety of wire, cord, and receptacle options.
- ▶ Ballast(s) secured by two captive bolts and nuts to ensure a tight, reliable fit for maximum heat dissipation.
- ▶ This fixture is proudly made in the USA.



SPECIFICATIONS

Enclosure – High-impact, .090" acrylic tube housing with stainless steel end caps and rubber compression gaskets.

Interior Housing – .060" extruded aluminum channel. All other metal components manufactured from sheet aluminum.

Reflective Surfaces – 92% minimum average reflective white polyester powder coat bonded to phosphate-free, multi-stage pretreated metal on internal components. All parts painted after fabrication to facilitate installation, increase efficiency, and inhibit corrosion.

Electrical – Electronic ballast standard, instant start T8, program start T5, rated Class P.

Mounting – Surface, wall, or suspended with optional stainless steel hanger hardware.

Labels & Certifications – UL/CUL listed as fluorescent luminaire suitable for wet locations. NSF/ANSI Standard 2–Splash Zone certified.

ORDERING INFORMATION

SERIES

TL 6" Liquid-Tight Tube Light

NOMINAL LENGTH

2 2'
4 4'
8 8'

TOTAL LAMPS

2 or 4 (2-lamp cross-section)

LAMP WATTAGE/TYPE

14T5S	2', 14-watt T5	32	4', 32-watt T8
17	2', 17-watt T8	54T5H	4', 54-watt T5HO
24T5H	2', 24-watt T5HO	59	8', 59-watt T8
28T5S	4', 28-watt T5	86	8', 86-watt T8

ENCLOSURE

DR High-impact acrylic tube (6" O.D. x .090" wall thickness)

POWER ENTRY (Must specify)

Wet location cord sets are yellow.

3WC6 3-wire, 6' STOW cord

3WC20 3-wire, 20' STOW cord

4WC6² 4-wire, 6' STOW cord²

4WC20² 4-wire, 20' STOW cord²

3WMR 3-wire mini-male receptacle only

3WMRC6 3-wire mini-male receptacle with 6' STOW cord

3WMRC20 3-wire mini-male receptacle with 20' STOW cord

4WMR² 4-wire mini-male receptacle only²

4WMRC6² 4-wire mini-male receptacle with 6' STOW cord²

4WMRC20² 4-wire mini-male receptacle with 20' STOW cord²

OPTIONS/ACCESSORIES

For generic EM ballast options (must specify voltage), see Fluorescent Information section.²

Highly visible internal red "label" will identify fixtures with EM ballasts.

TL3/CMBK Stainless steel suspension chain mounting, 3' in length

TL6/CMBK Stainless steel suspension chain mounting, 6' in length

TL/FMBK Stainless steel wall or surface mounting brackets

BALLAST TYPE

EB2 2-lamp electronic ballast

EBHW2 2-lamp high-wattage electronic ballast (T8 only)

EB4 4-lamp electronic ballast

EB2/2 (2) 2-lamp electronic ballasts

EBHW2/2 (2) 2-lamp high-wattage electronic ballasts (T8 only)

VOLTAGE

120 120V

277 277V

UNV 120-277V

347 347V

480 480V (T5HO only)

HRV 347-480V (T5HO only)

¹ Corrosion resistance can be compromised when exposed to chemicals and/or cleaning agents, i.e. chlorine-containing agents, etc.

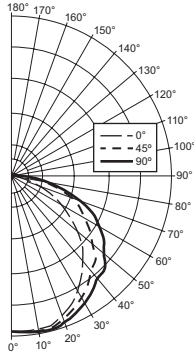
² Four-wire cord is required for fixtures with "EM" option.

PHOTOMETRY

Catalog #: **TL-4-232-DR-EB2**

TEST REPORT INFORMATION

- ▶ Test Report #: 9177.0
- ▶ Date: 12/20/96
- ▶ Lamp Type: F32T8/SPX35/RS
- ▶ Lamp Quantity: 2



LUMEN SUMMARY

Zone	Lumens	% Lamp	% Fixture
0 - 30	1040.	17.6	24.3
0 - 40	1718.	29.1	40.1
0 - 60	3151.	53.4	73.6
0 - 90	4211.	71.4	98.3
90 - 120	67.	1.1	1.6
90 - 130	71.	1.2	1.7
90 - 150	71.	1.2	1.7
90 - 180	71.	1.2	1.7
Total Luminaire:			
0 - 180	4282.	72.6	100.0

Total Luminaire Optical Efficiency: **72.6%**
IES Spacing Criteria: Across = 1.4, Along = 1.3

CANDLEPOWER DISTRIBUTION

Vertical Angle	Horizontal Angle			Zonal Lumens
	0°	45°	90°	
0°	1270.	1270.	1270.	
5°	1271.	1278.	1280.	122.0
15°	1260.	1283.	1294.	362.9
25°	1154.	1200.	1239.	554.9
35°	995.	1085.	1151.	678.3
45°	819.	973.	1077.	743.7
55°	577.	778.	924.	689.4
65°	341.	610.	731.	569.0
75°	132.	383.	429.	352.9
85°	17.	150.	174.	137.9
90°	3.	71.	84.	
95°	0.	42.	50.	36.6
105°	0.	22.	29.	18.9
115°	0.	14.	21.	11.3
125°	0.	11.	16.	4.3
135°	0.	0.	0.	.0
145°	0.	0.	0.	.0
155°	0.	0.	0.	.0
165°	0.	0.	0.	.0
175°	0.	0.	0.	.0
180°	0.	0.	0.	

ZONAL CAVITY COEFFICIENTS

Room Cavity Ratio	Ceiling			Wall			Floor		
	.80	.70	.50	.30	.80	.70	.50	.30	.10
0	.86	.86	.86	.84	.84	.84	.80	.80	.80
1	.79	.75	.72	.76	.73	.70	.70	.68	.65
2	.71	.65	.60	.69	.64	.59	.61	.57	.54
3	.65	.58	.52	.63	.56	.51	.54	.49	.46
4	.60	.51	.45	.58	.50	.44	.48	.43	.39
5	.54	.45	.38	.53	.44	.38	.42	.37	.33
6	.50	.40	.33	.48	.39	.33	.38	.32	.28
7	.46	.36	.29	.44	.35	.29	.34	.28	.24
8	.42	.32	.26	.41	.31	.25	.30	.25	.21
9	.39	.29	.22	.38	.28	.22	.27	.22	.18
10	.36	.26	.20	.35	.26	.20	.25	.19	.16

Effective Floor Cavity Reflectance = .20

FIXTURE OPTIONS

MOUNTING OPTIONS/ACCESSORIES

	<p>TL/FMBK Stainless steel brackets for wall or surface mounting. Two required per unit.</p>
	<p>TL3/CMBK or TL6/CMBK Stainless steel suspension chain mounting system</p>

POWER ENTRY OPTIONS

	<p>3WC6 or 3WC20 3-wire STOW cord, 6' or 20'</p>
	<p>4WC6 or 4WC20 4-wire STOW cord, 6' or 20'</p>
	<p>3WMR or 4WMR Factory-installed mini-male disconnect receptacle (requires cord with mini-female connector for input into fixture)</p> <p>Cord not included</p>
	<p>3WMRC6, 3WMRC20, 4WMRC6, or 4WMRC20 Factory-installed mini-male disconnect receptacle with 6' or 20' STOW cord.</p>