

VIDEO CONFERENCE LIGHT

VCL

LED

CATALOG #:

TYPE:

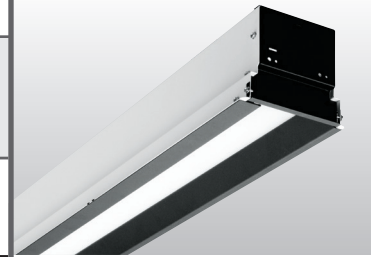
PROJECT:

NOTES:

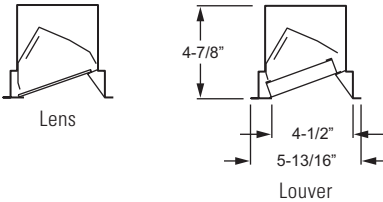
EXAMPLE

VCL G - 4 - L25/840 - B - AF - OPTIONS - DIM - UNV

SERIES CEILING TYPE NOM. L. LUMEN PACKAGE CRI & CCT TRIM COLOR SHIELDING OPTIONS DRIVER VOLTAGE



CROSS SECTIONS



ORDERING INFORMATION

SERIES

VCL Video Conference Light

CEILING TYPE

When using in NEMA Type "SS" or "NFG" applications, must specify EQCLIPS option. For flange installations use the Drywall Kit (DFK), see Accessories.

G NEMA Type "G", "SS", and "NFG"

NOMINAL LENGTH

4 4'

LED PACKAGE

Example: L75/840			
LUMEN PACKAGE	NOMINAL LUMENS (AF SHIELDING AND B TRIM)	MINIMUM CRI & CCT	AVERAGE SYSTEM WATTAGE
L25	2,500	830 = 80 CRI, 3000K	41
		835 = 80 CRI, 3500K	40
		840 = 80 CRI, 4000K	38
		850 = 80 CRI, 5000K	37

Nominal lumens based on AF shielding and B trim. Other shielding and trim options may reduce lumen output. See back for fixture performance data.

TRIM COLOR

B Black
W White

SHIELDING

LENS OPTIONS

AF Frosted acrylic, .125" thick

LOUVER OPTIONS

BSBL Black straight blade louver with overlay

WSBL White straight blade louver with overlay

ASBL Silver straight blade louver with overlay

OPTIONS

EM/10W 10-watt emergency driver (120V-277V only)

EQCLIPS Earthquake clips (2 per fixture)

(L__) Additional lower lumen packages available. Specify in increments of 100 nominal lumens. Option must be specified with next higher lumen package.

Example: 2,000 nominal lumens = VCLG-4-L25/850-(**L20**).

ACCESSORIES (Must be ordered separately)

Fixture must be installed prior to Drywall Kit (DFK).

DFK-0648W Drywall kit, 6" x 48"

DRIVER

Additional dimming drivers available, see [Information Section](#).

DRV Driver prewired for non-dimming applications

DIM Driver prewired for 0-10V low voltage dimming applications

VOLTAGE

120 120V

277 277V

UNV 120-277V

347 347V (DRV and DIM only. Not available with EM drivers.)

FEATURES

- ▶ Designed using LED technology to deliver asymmetric lighting with minimal glare—ideal for video conference meetings.
- ▶ Power and light levels can be custom set to meet energy and design needs.
- ▶ Multiple dimming protocols available.
- ▶ Minimum 80 CRI; 3000K, 3500K, 4000K, or 5000K CCT.
- ▶ Fixture is Armstrong TechZone™ and USG Logix™ ceiling systems compatible.
- ▶ Acrylic lens or louver trim provides lamp cutoff and reduces glare.
- ▶ Lift-and-shift lens or louver assembly allows for ease of maintenance.
- ▶ 4-1/2" narrow aperture.
- ▶ Quick-wire access plate in back of fixture housing for easy attachment of incoming power supply.
- ▶ This fixture is proudly made in the USA.



LED

Catalog #: **VCLG-4-L25/840-B-AF**

SPECIFICATIONS

Housing – 22-gauge die-formed C.R.S.
Trim – Die-formed C.R.S. with textured finish.
Shielding – .125" thick frosted acrylic lens or straight blade louver with matte white overlay.
Finish – 92% minimum average reflective white polyester powder coat bonded to phosphate-free, multi-stage pretreated metal. All parts painted after fabrication to facilitate installation, increase efficiency, and inhibit corrosion.
Electrical – High quality mid-power LED board. Rated for 50,000 hours at 70% lumen maintenance (L70). 25°C maximum ambient operating temperature.
Mounting – NEMA Type "G" standard. For flange installations use the Drywall Kit (DFK), ordered separately. Fixture must be installed prior to Drywall Kit (DFK). Accommodates "NFG" and "SS" without modification (earthquake clips required).
Labels – cETLus conforms to UL STD 1598 and UL STD 8750. Certified to CAN/CSA STD C22.2 No. 250.0. Suitable for damp locations.
Warranty – 5-year limited warranty, see hew.com/warranty.

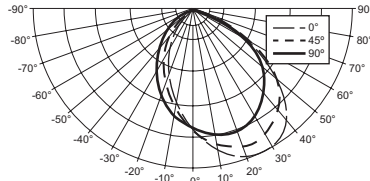
IMPORTANT:

Electrostatic sensitive unit. Observe precautions when handling.

PHOTOMETRY

TEST REPORT INFORMATION

- ▶ Test Report #: 100844047CART-002
- ▶ Date: 08/08/12
- ▶ Lamp Type: LED
- ▶ **Rated Lumens: 2516**
- ▶ **Watts: 43.6**
- ▶ **Lumens Per Watt: 57.7**
- ▶ **CRI: 82.7**
- ▶ **CCT: 4036K**



CANDLEPOWER DISTRIBUTION

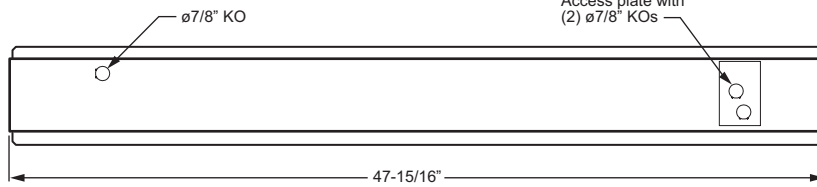
Vertical Angle	Horizontal Angle			Zonal Lumens
	0°	45°	90°	
0°	1002.	1002.	1002.	
5°	1114.	1061.	993.	94.4
15°	1279.	1164.	950.	271.2
25°	1359.	1201.	867.	412.2
35°	1316.	1151.	747.	492.7
45°	1075.	1003.	602.	487.6
55°	697.	738.	446.	392.4
65°	327.	431.	290.	242.7
75°	107.	166.	148.	103.0
85°	13.	27.	37.	19.7
90°	0.	0.	1.	

LUMEN SUMMARY

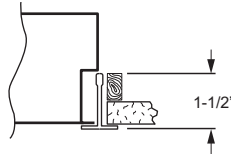
Zone	Lumens	% Fixture
0° - 30°	778.	30.9
0° - 40°	1271.	50.5
0° - 60°	2151.	85.5
0° - 90°	2516.	100.0
TOTAL LUMINAIRE:		
0 - 180	2516.	100.0
IES Spacing Criteria: End = 1.2 Across = 1.2		

FIXTURE DETAILS

BACK VIEW



DRYWALL KIT (DFK)



When using the DFK with Williams VCL fixture, the structure surrounding the DFK is to extend no more than 1-1/2" from the bottom of the "T" as shown.

LENS



LOUVER

